

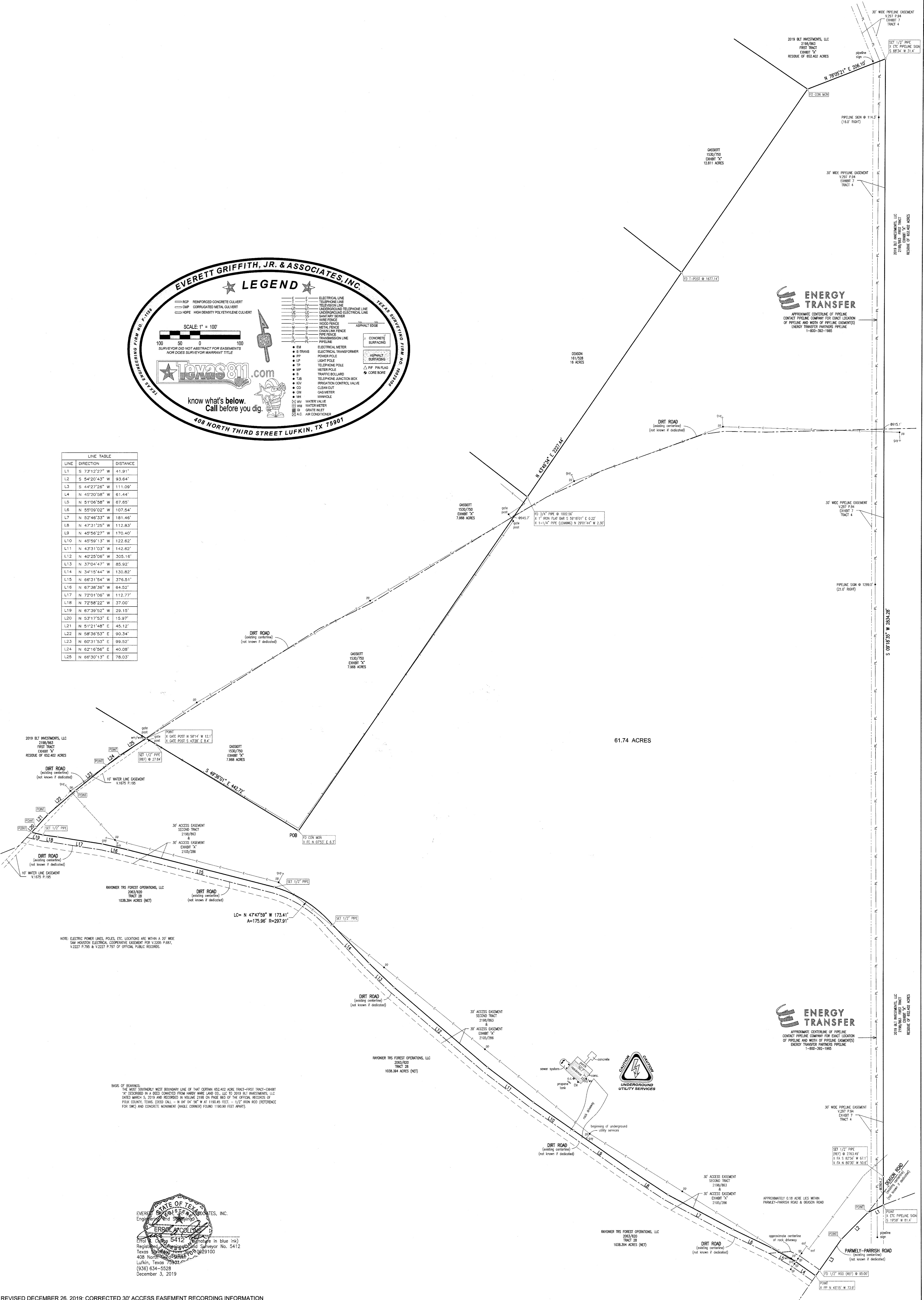
EVERETT GRIFFITH, JR. & ASSOCIATES, INC.
LEGEND
 TEXAS SURVEYING FIRM NO. 10029100

SCALE: 1" = 100'

TEXAS 811.com
 know what's below.
 Call before you dig.
 408 NORTH THIRD STREET LUFKIN, TX 75901

RC	REINFORCED CONCRETE CULVERT	EL	ELECTRICAL LINE
CM	CORRUGATED METAL CULVERT	TL	TELEPHONE LINE
HDPE	HIGH DENSITY POLYETHYLENE CULVERT	UL	UNDERGROUND TELEPHONE LINE
		UE	UNDERGROUND ELECTRICAL LINE
		SS	SEWER
		W	WIRE FENCE
		WF	WOOD FENCE
		M	METAL FENCE
		CF	CHAIN LINK FENCE
		P	PIPE FENCE
		TL	TRANSMISSION LINE
		PL	PIPELINE
		EM	ELECTRICAL METER
		E-TRANS	ELECTRICAL TRANSFORMER
		PP	POWER POLE
		LP	LIGHT POLE
		TP	TELEPHONE POLE
		MP	METER POLE
		B	TRAFFIC BOLLARD
		TAB	TELEPHONE JUNCTION BOX
		KV	IRRIGATION CONTROL VALVE
		CD	CLEANOUT
		GM	GAS METER
		MH	MANHOLE
		WV	WATER VALVE
		WM	WATER METER
		GA	GATE VALVE
		A/C	AIR CONDITIONER

LINE	DIRECTION	DISTANCE
L1	S 73°12'27" W	41.91'
L2	S 54°20'43" W	93.64'
L3	S 44°27'26" W	111.09'
L4	N 45°20'58" W	61.44'
L5	N 51°06'58" W	67.65'
L6	N 55°09'02" W	107.54'
L7	N 52°48'33" W	181.46'
L8	N 47°31'25" W	112.83'
L9	N 45°56'27" W	170.40'
L10	N 45°59'13" W	122.62'
L11	N 43°31'03" W	142.62'
L12	N 40°25'06" W	305.16'
L13	N 37°04'47" W	85.92'
L14	N 34°15'44" W	130.82'
L15	N 66°31'54" W	376.51'
L16	N 67°38'36" W	64.52'
L17	N 72°01'06" W	112.77'
L18	N 72°58'22" W	37.00'
L19	N 67°39'52" W	29.15'
L20	N 53°17'53" E	15.97'
L21	N 51°21'48" E	45.12'
L22	N 58°36'53" E	90.34'
L23	N 60°31'53" E	99.52'
L24	N 62°16'56" E	40.08'
L25	N 66°30'15" E	78.03'



NOTE: ELECTRIC POWER LINES, POLES, ETC. LOCATIONS ARE WITHIN A 20' WIDE SAN HOUSTON ELECTRICAL COOPERATIVE EASEMENT FOR V.2026 P.687, V.2027 P.706 & V.2027 P.707 OF OFFICIAL PUBLIC RECORDS.

BASE OF REPAIRS:
 THE MOST SOUTHERLY WEST BOUNDARY LINE OF THAT CERTAIN 652.402 ACRE TRACT-EXHIBIT 'A' DESCRIBED IN A DEED CONVEYED FROM HARDY WARE AND CO., LLC TO 2019 BLT INVESTMENTS, LLC DATED MARCH 5, 2019 AND RECORDED IN VOLUME 2198 ON PAGE 883 OF THE OFFICIAL RECORDS OF POLK COUNTY, TEXAS (DSD CALL - N 04° 54' 00" W AT 1180.00 FEET - 1/2" FROM ROO (REFERENCE FOR SMC) AND CONCRETE MONUMENT (ANGLE CORNER) FOUND 1180.00 FEET APART).

EVERETT GRIFFITH, JR. & ASSOCIATES, INC.
 ENGINEERS - SURVEYORS
 408 NORTH THIRD STREET
 LUFKIN, TEXAS, 75901
 (936) 634-5528
 December 3, 2019

REVISED DECEMBER 26, 2019; CORRECTED 30' ACCESS EASEMENT RECORDING INFORMATION

<p>EVERETT GRIFFITH, JR. & ASSOCIATES, INC. ENGINEERS - SURVEYORS 408 NORTH THIRD STREET LUFKIN, TEXAS, 75901 TEXAS ENGINEERING FIRM NO. F-1156 936-634-5528 TEXAS SURVEYING FIRM NO. 10029100</p>	TRAVIS AUBREY BARNES 2019 BLT INVESTMENTS, LLC 61.74 ACRE TRACT HARDY WARE SURVEY, ABSTRACT NO. 739 POLK COUNTY, TEXAS	Drawing No.	
	SEE ATTACHED FIELDNOTES	Sheet 1 of 1	
	Drawn By: <i>[Signature]</i> Designed By: TUBOKOK Surveyed By: B. J. HENSON	Calculated By: E. COLLINS Checked By: E. COLLINS Save Date: 12-26-19	Scale: 1"=100' Job No. 907000 Fieldbook No. 19-00-37 Save Name: BARNES 0215
	Revised: 12/26/19		
	Date: 12/26/19		