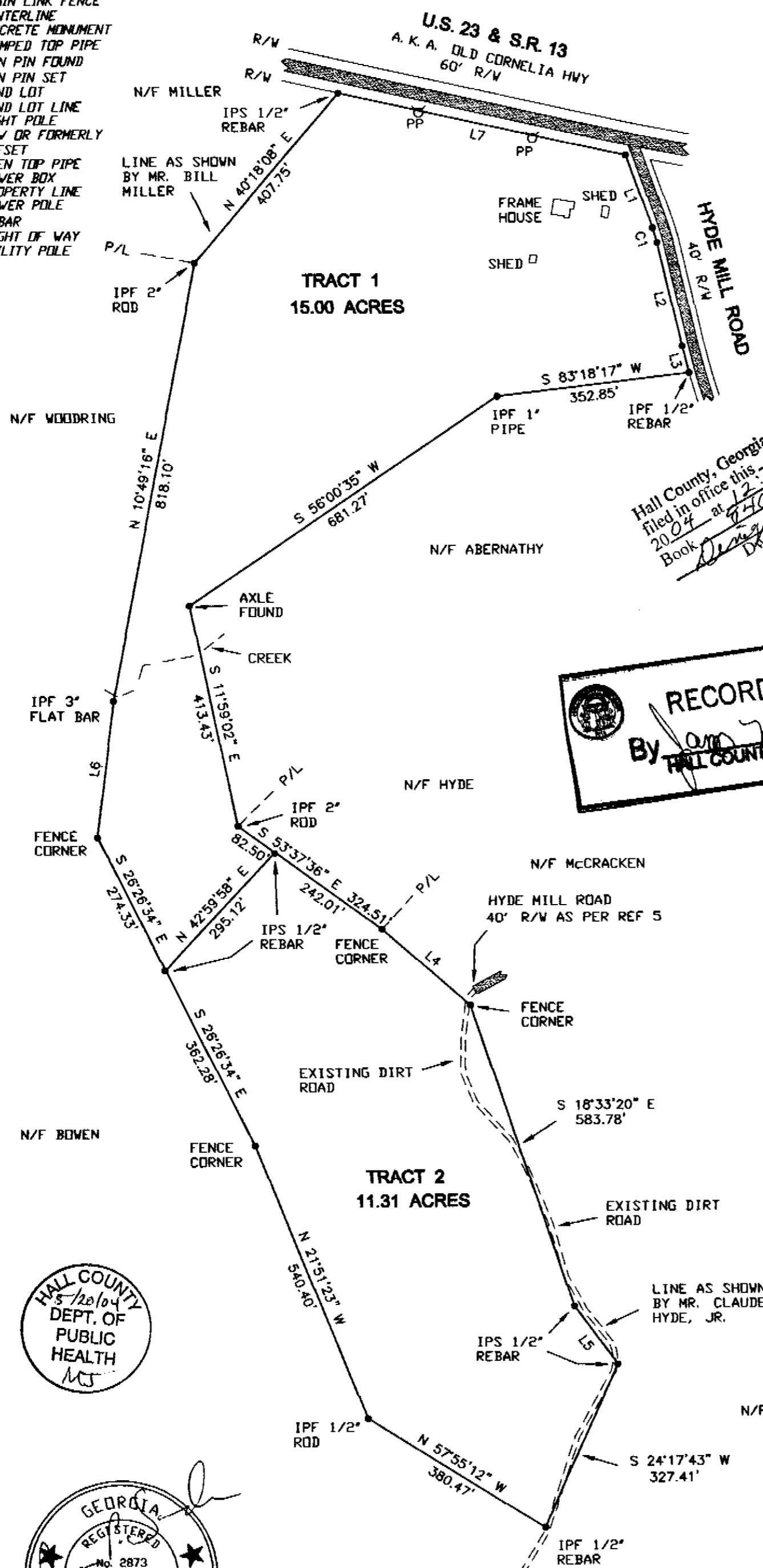


LEGEND

- BWF = BARBED WIRE FENCE
- CLF = CHAIN LINK FENCE
- C/L = CENTERLINE
- C.M. = CONCRETE MONUMENT
- CTP = CRIMPED TOP PIPE
- IPF = IRON PIN FOUND
- IPS = IRON PIN SET
- LL = LAND LOT
- LLL = LAND LOT LINE
- LP = LIGHT POLE
- N/F = NOW OR FORMERLY
- D/S = OFFSET
- OT = OPEN TOP PIPE
- PB = POWER BOX
- P/L = PROPERTY LINE
- PP = POWER POLE
- RB = REBAR
- R/W = RIGHT OF WAY
- U/P = UTILITY POLE

CURVE	RADIUS	ARC LENGTH	CHORD LENGTH	CHORD BEARING	DELTA ANGLE
C1	815.39'	28.24'	28.24'	S 17°17'37" E	01°59'04"

LINE	BEARING	DISTANCE
L1	S 19°35'46" E	142.31'
L2	S 13°09'44" E	195.13'
L3	S 14°16'54" E	50.70'
L4	S 48°43'41" E	212.97'
L5	S 35°42'17" E	133.00'
L6	N 07°06'51" E	251.38'
L7	S 77°18'39" E	538.02'



Hall County, Georgia, Clerk Superior Court
 filed in office this 31 day of July
 2004 at 12:10 pm Recorded in Plat
 Book Deight page 132
 Deight S. Wood, Clerk

RECORDING PERMIT
 By and John S. 24-2004
 HALL COUNTY PLANNING COMMISSION

REFERENCES

1. DEED BOOK 1983, PAGE 313.
2. DEED BOOK 2012, PAGE 147.
3. PLAT BOOK 63, PAGE 44.
4. DEED BOOK 1092, PAGE 184.
5. PLAT BOOK 79, PAGE 176.
6. DEED BOOK 1534, PAGE 91.
7. DEED BOOK 3941, PAGE 604.
8. DEED BOOK 924, PAGE 330.

NOTES

BY GRAPHIC DETERMINATION, THIS PROPERTY IS NOT IN A SPECIAL FLOOD HAZARD AREA. REFERENCE: F.E.M.A. FLOOD INSURANCE RATE MAPS, COMMUNITY-PANEL NUMBER: 13139C0225 E, DATED MARCH 21, 2000.

A PENTAX PCS 215 TOTAL STATION WAS USED TO OBTAIN THE LINEAR AND ANGULAR MEASUREMENTS USED IN THE PREPARATION OF THIS PLAT.

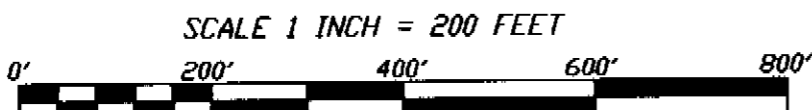
THE FIELD DATA UPON WHICH THIS PLAT IS BASED HAS A CLOSURE PRECISION OF ONE FOOT IN 21,083 FEET, AND AN ANGULAR ERROR OF .07" PER ANGLE POINT AND WAS ADJUSTED USING THE COMPASS RULE. THIS PLAT HAS BEEN CALCULATED FOR CLOSURE AND IS FOUND TO BE ACCURATE WITHIN ONE FOOT IN 50,000 FEET.

THIS PROPERTY IS SUBJECT TO ANY EASEMENTS, RESERVATIONS OR RESTRICTIONS BOTH WRITTEN OR UNWRITTEN.

IN MY OPINION THIS PLAT IS A CORRECT REPRESENTATION OF THE LAND PLATTED AND HAS BEEN PREPARED IN CONFORMITY WITH THE MINIMUM STANDARDS AND REQUIREMENTS OF THE LAW.



DATE SIGNED 4-26-04



PLAT OF BOUNDARY SURVEY FOR KENNETH SAVAGE	
GLADES GMD 403 HALL COUNTY, GEORGIA	
PLAT PREPARED BY CLEVELAND LAND SERVICES, INC. SURVEYING - MAPPING - PLANNING	FIELD DATE: 3-8-04 REVISED DRWG: 4-26-04 JEROME P. SANDERS GA. P.L.S. # 2873
566 SAUTEE WOODS TRAIL SAUTEE- NACDODCHEE, GEORGIA 30571 OFFICE (706)878-9045 FAX (706)878-9045 Website http://clsqa.tripod.com	DRAWING # B043-17 DRAWING NAME: KS-DCHWY2 CRD NAME: KS-DCHWY TERMINAL B, FB# 162