



# Stovall Farm 428.0 +/- ac. Coahoma County, Mississippi

**TOTAL SIZE** 428 +/- farmland ac., 420 +/- cropland ac., 8 +/- wooded ac., and 320 +/- total irrigated ac., including 190 +/- pivot irrigated ac. and 130 +/- leveled irrigated ac.

**DESCRIPTION** This is a highly desirable property with superb soils that, while recently planted in cotton and corn, can produce excellent yields of diverse crops. The farm is located on MS State Hwy 1 at Stovall, Miss., 9.5 miles northwest of Clarksdale, Miss.

This 428 +/- acre tract contains 415 +/- cropland acres, 320 +/- of which are irrigated, with 130 +/- leveled irrigated acres and 190 +/- pivot irrigated.

Class I and Class II sandy loam and silt loam soils, suitable for high yielding corn, cotton or soybean production, make up approximately 85 percent of the cropland with the balance consisting of silty clay loam and clay soils, also suitable for corn, cotton and soybean production.

**FSA DATA**  
**FARM #9091**

CROP	BASE ACRES	PLC YIELD
Wheat	21.65	64
Corn	11.47	149
Sunflowers	.31	776
Soybeans	27.89	43
Cotton	255.66	2398
Generic	63.91	

**IMPROVEMENTS**

- 1 - Electric submersible with underground pipe and two risers
- 1 - Turbine well with gearhead, pump and generator
- 1 - 2100-foot Lindsay pivot

**PROPERTY TAXES (2023)**

\$14,157,  
approximately \$27 per ac.

**SHOWING**

By appointment only.

**MANAGEMENT**

Professional management available.



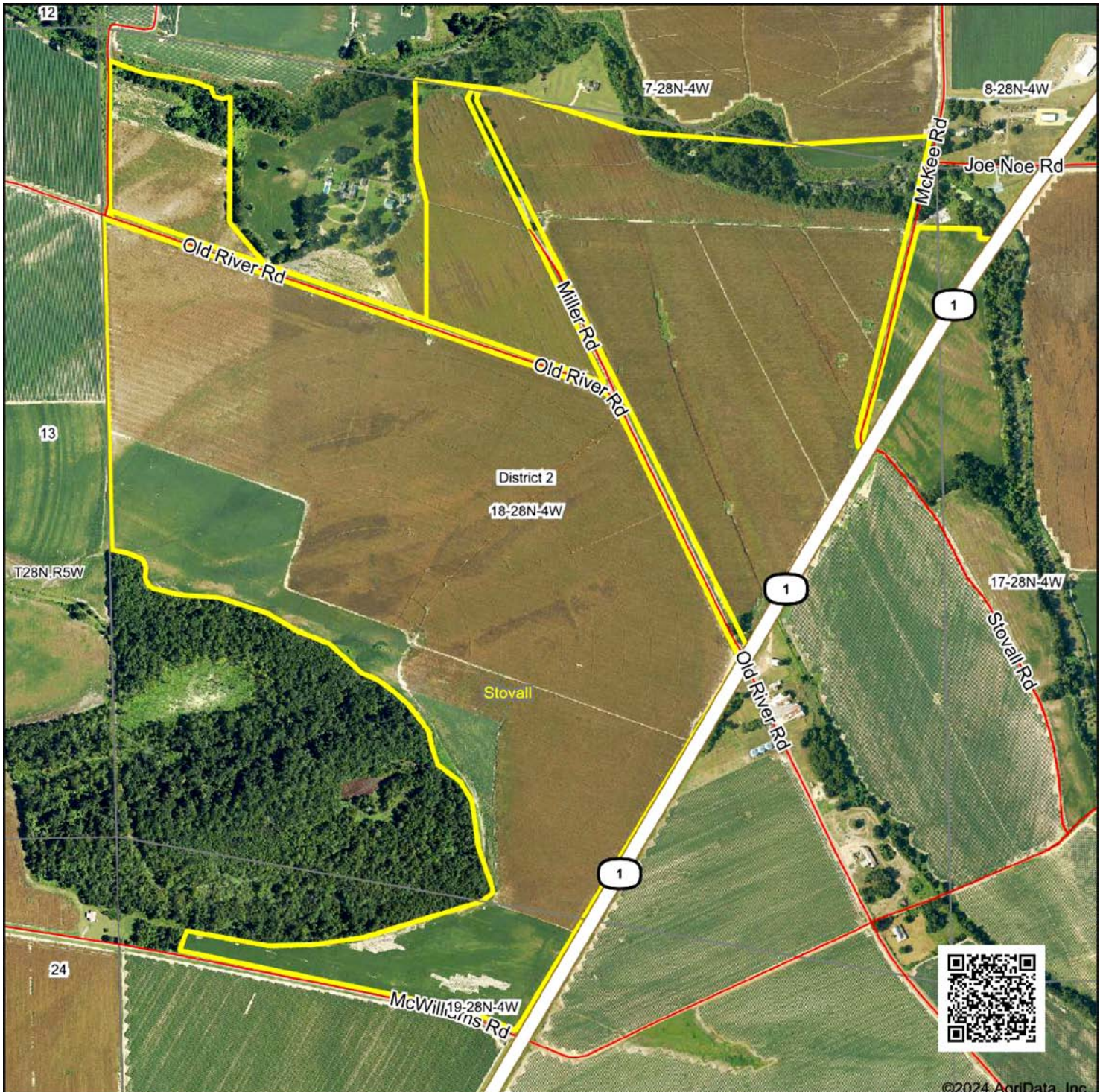
**FOR  
SALE**

**CONTACT:** Murry McClintock, Broker, McClintock Land Company  
Office: 662-363-1801 Cell: 662-363-6024 Fax: 662-363-1800  
E-mail: [murry@mcclintockland.com](mailto:murry@mcclintockland.com)  
Address: PO Box 115, Tunica, MS 38676



# Stovall Farm (428.0 +/- ac.) Coahoma County, Mississippi

## Aerial Map



18-28N-4W  
Coahoma County  
Mississippi

Maps Provided By:  
  
CUSTOMIZED ONLINE MAPPING  
© Agridata, Inc. 2018 www.AgridataInc.com



©2024 AgriData, Inc.



[www.mcclintockland.com](http://www.mcclintockland.com)



# Stovall Farm (428.0 +/- ac.) Coahoma County, Mississippi

## Location Map



Map Center: 34.298235, -90.579217

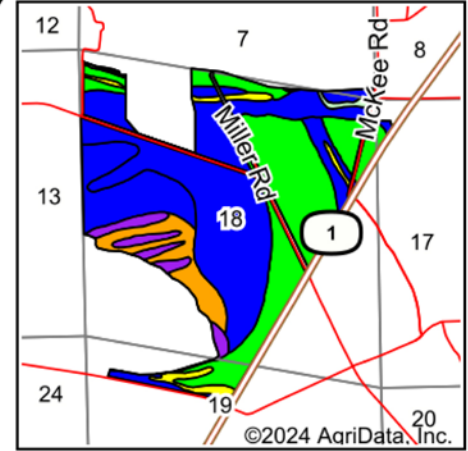
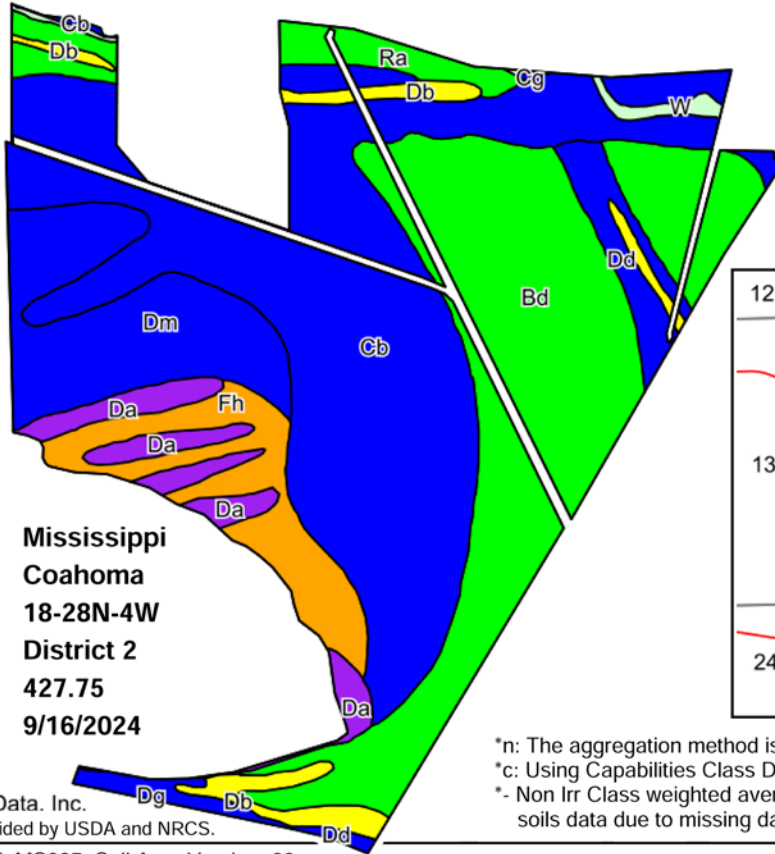
Maps Provided By:  
**surety**  
CUSTOMIZED ONLINE MAPPING  
© Agridata, Inc. 2018 www.AgridataInc.com



[www.mcclintockland.com](http://www.mcclintockland.com)

# Stovall Farm (428.0 +/- ac.) Coahoma County, Mississippi

## Soils Map



State: **Mississippi**  
 County: **Coahoma**  
 Location: **18-28N-4W**  
 Township: **District 2**  
 Acres: **427.75**  
 Date: **9/16/2024**

\*n: The aggregation method is "Weighted Average using all components"  
 \*c: Using Capabilities Class Dominant Condition Aggregation Method  
 \*- Non Irr Class weighted average cannot be calculated on the current soils data due to missing data.

©2024 Agridata, Inc.  
 Soils data provided by USDA and NRCS.

Area Symbol: MS027, Soil Area Version: 20

Code	Soil Description	Acres	Percent of field	Non-Irr Class Legend	Non-Irr Class *c	Corn Bu	Cotton lint Lbs	Rice Irrigated Bu	Soybeans Bu	*n NCCPI Soybeans
Cb	Commerce silt loam, 0 to 3 percent slopes	158.95	37.1%		Ile	85	825		35	73
Bd	Bosket very fine sandy loam, 0 to 3 percent slopes (dubbs)	122.72	28.7%		Iw	90	850		40	57
Dm	Dundee silty clay loam, 0.5 to 3 percent slopes	45.87	10.7%		IIw	85	750		40	67
Fh	Forestdale silty clay loam, 0.5 to 3 percent slopes	29.55	6.9%		IIIw	50	600	130	35	55
Da	Dowling clay (sharkey)	18.36	4.3%		Vw					1
Ra	Robinsonville very fine sandy loam, 0 to 3 percent slopes	14.41	3.4%		Iw	115	825		40	57
Db	Dowling soils (sharkey)	13.54	3.2%		IVw				30	46
Dd	Dubbs very fine sandy loam, 0 to 3 percent slopes, rarely flooded	12.34	2.9%		Ile	90	850		40	42
Cg	Commerce silty clay loam, 0 to 3 percent slopes	4.54	1.1%		Ile	85	825		35	73
Dg	Dundee silt loam, 0 to 3 percent slopes, rarely flooded	4.37	1.0%		Ile	85	810		36	57
W	Water	3.10	0.7%							
<b>Weighted Average</b>					<b>*-</b>	<b>78.2</b>	<b>741.6</b>	<b>9</b>	<b>35.4</b>	<b>*n 60.5</b>



Maps Provided By:





# Stovall Farm (428.0 +/- ac.) Coahoma County, Mississippi

## Property Photos



McClintock Land Company has previously entered into an agreement with the client to provide certain real estate brokerage services and acts as that client's designated agent. As such, McClintock Land is the agent of the seller. The information contained herein is from sources McClintock Land considers reliable, but is not guaranteed. This offering may be withdrawn from the market or be subject to a change in price or terms without advance notice. Seller reserves the right to reject any and all offers. Boundary lines on maps are for illustration purposes only and should not be used to define legal property lines.



Office: 662-363-1801

Murry McClintock, Licensed Real Estate Broker  
[murry@mcclintockland.com](mailto:murry@mcclintockland.com)

Cell: 662-363-6024

## McCLINTOCK LAND COMPANY