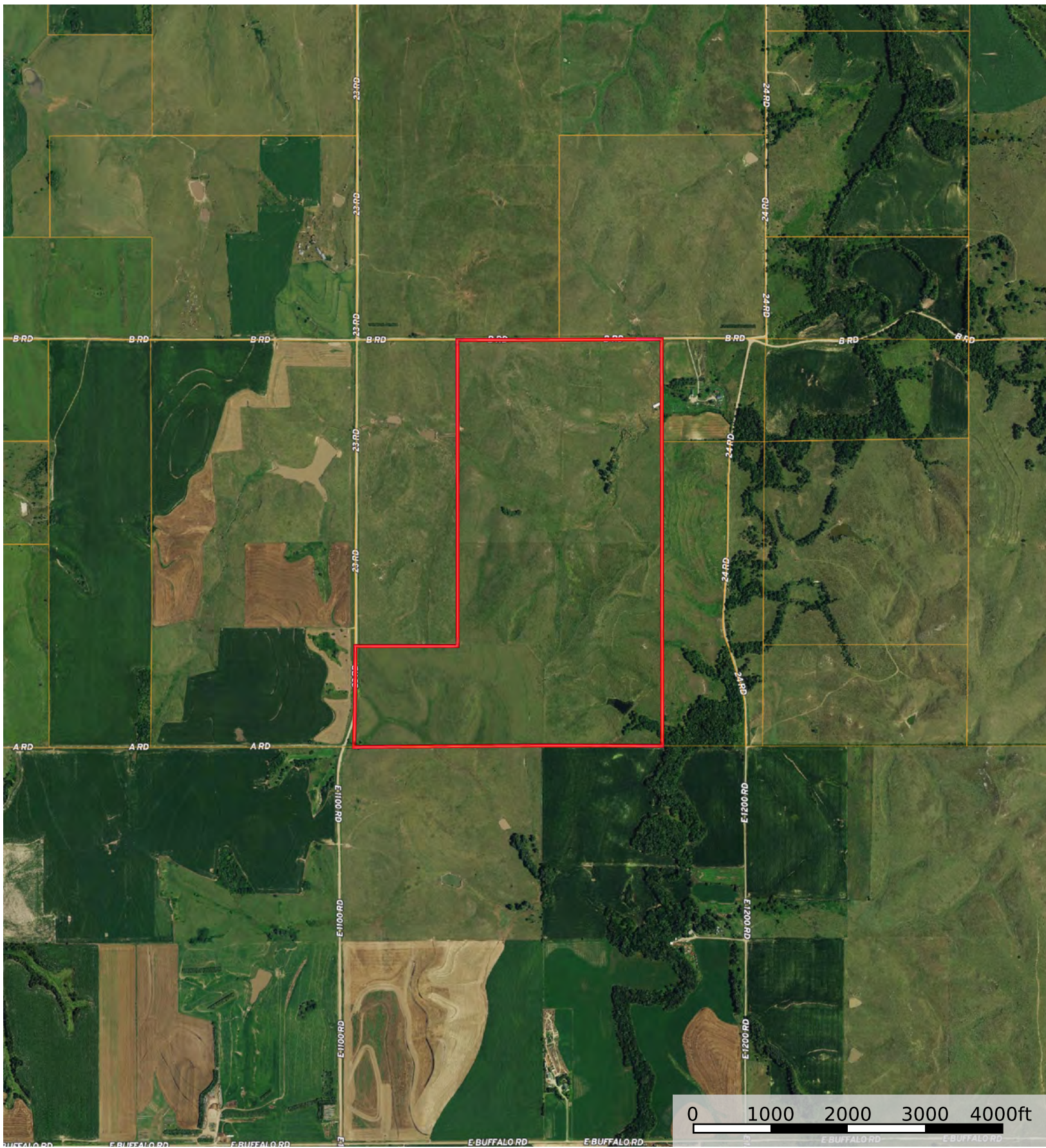
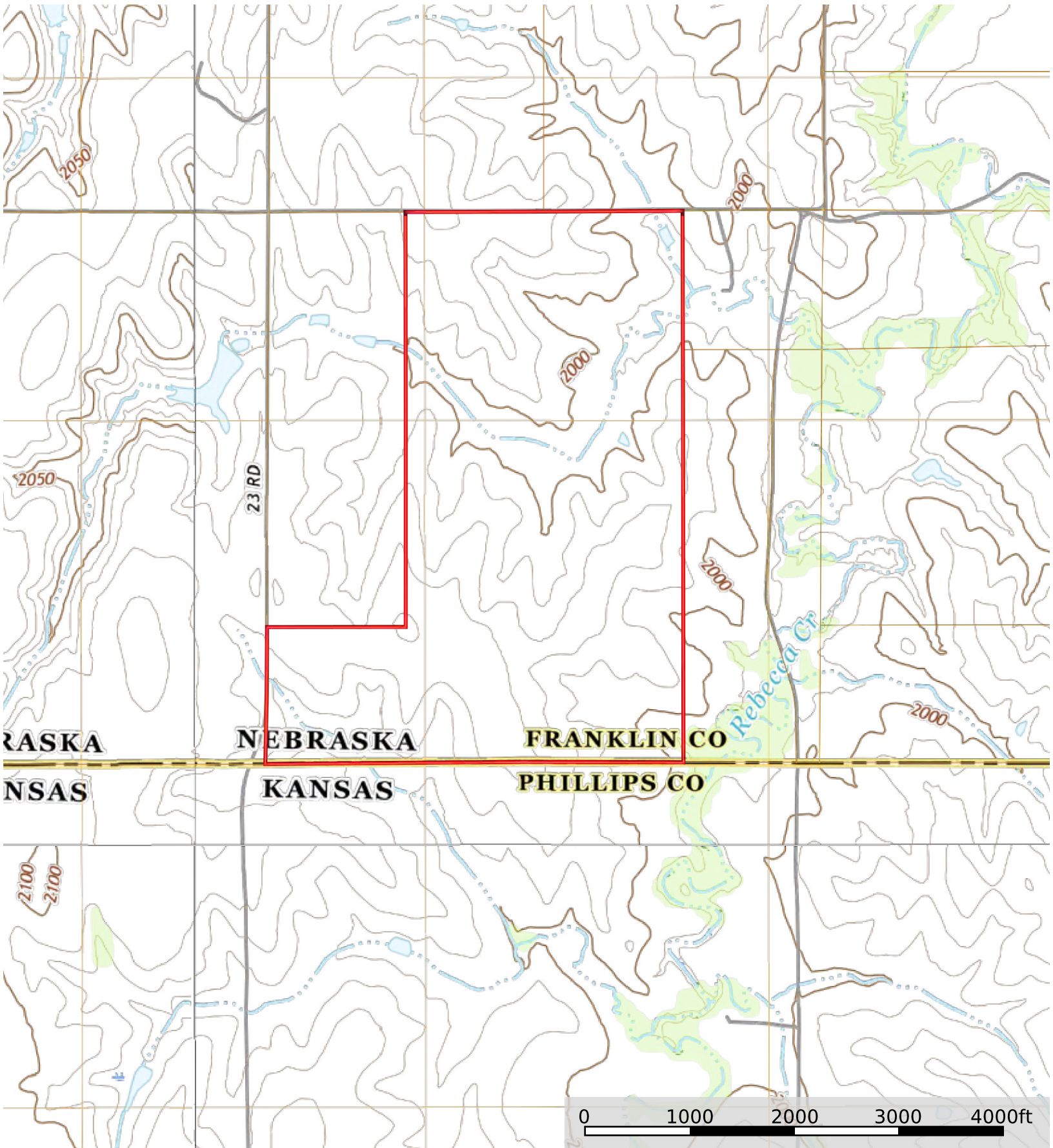
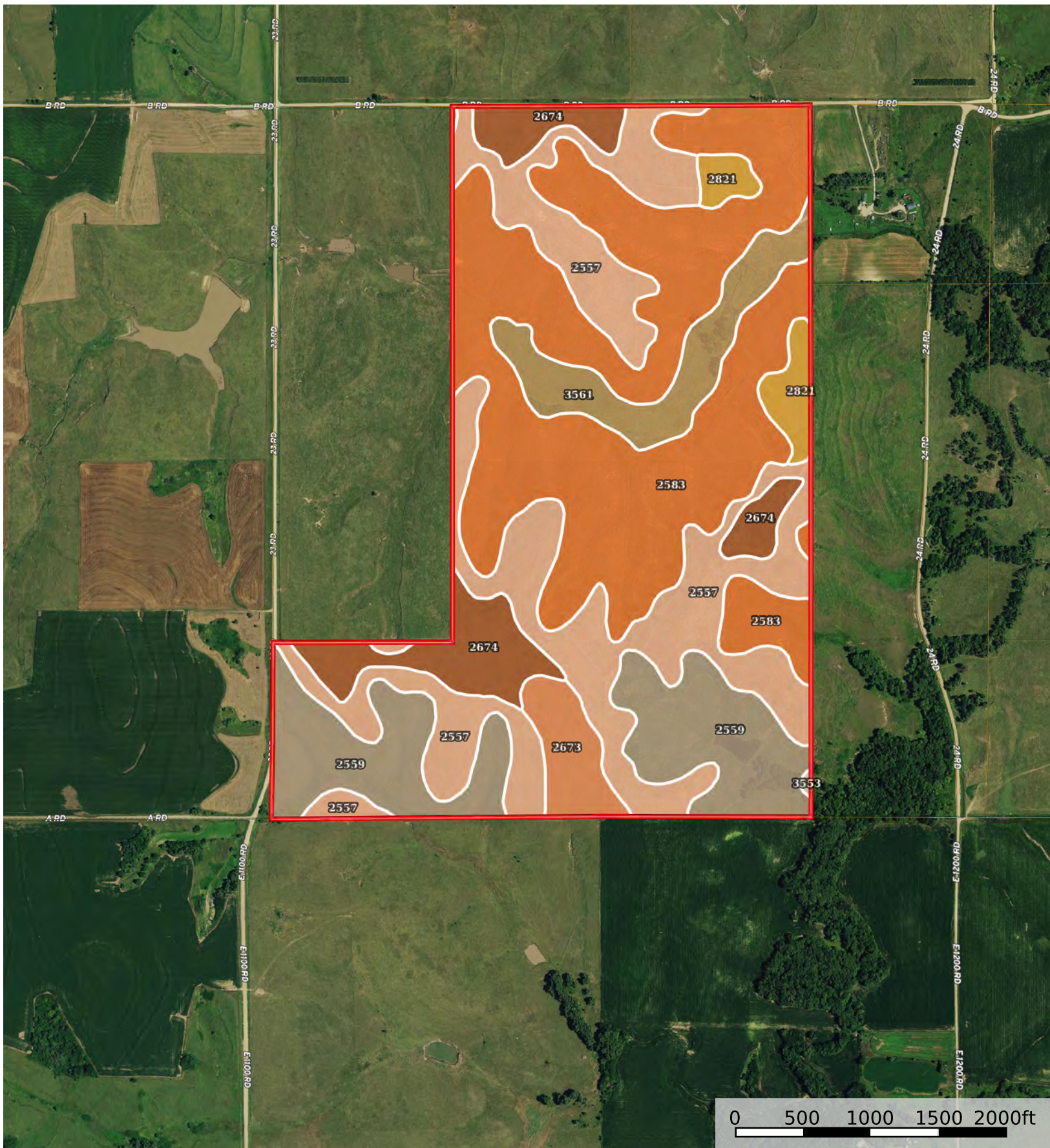


- Shed / Shack
- Water Storage Tank
- River / Creek 1
- Pond / Tank
- Boundary 3
- Boundary 2
- Boundary







SOIL CODE	SOIL DESCRIPTION	ACRES	%	CPI	NCCPI	CAP
2583	Nuckolls-Hobbs complex, 11 to 30 percent slopes	138.57	38.49	0	71	6e
2557	Coly-Uly silt loams, 3 to 11 percent slopes, eroded	97.22	27.0	0	65	4e
2559	Coly-Uly silt loams, 11 to 30 percent slopes	53.7	14.92	0	61	6e
2674	Holdrege silt loam, 1 to 3 percent slopes, plains and breaks	28.27	7.85	0	76	2e
3561	Hobbs silt loam, occasionally flooded	22.28	6.19	0	81	2w
2673	Holdrege silt loam, 0 to 1 percent slopes, plains and breaks	10.81	3.0	0	77	2c
2821	Uly silt loam, 6 to 11 percent slopes, eroded	8.91	2.47	0	66	4e
3553	Hobbs silt loam, frequently flooded	0.27	0.07	0	54	6w
TOTALS		360.03(*)	100%	-	68.94	4.73

(*) Total acres may differ in the second decimal compared to the sum of each acreage soil. This is due to a round error because we only show the acres of each soil with two decimal.

