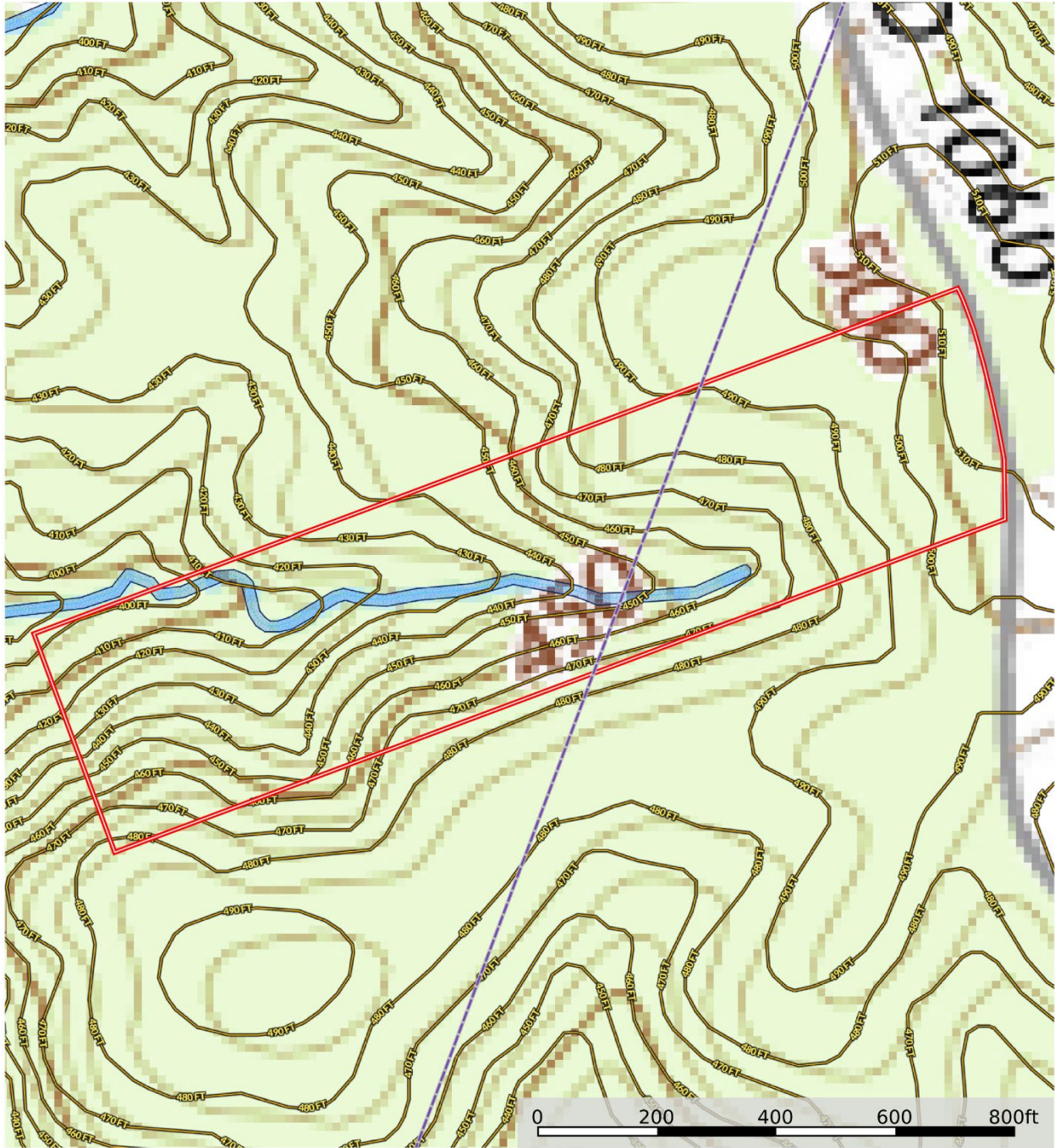



15.29ac, Shelby Co, TX - (Nepveux)  
Shelby County, Texas, 15.29 AC +/-




— Pipeline    
  Boundary    
  Wetlands    
  Riparian    
  Stream, Intermittent    
  River/Creek    
  Water Body

 The information contained herein was obtained from sources deemed to be reliable. Land id™ Services makes no warranties or guarantees as to the completeness or accuracy thereof.



Data presented is for reference purposes only and cannot be guaranteed.

 The information contained herein was obtained from sources deemed to be reliable. Land id™ Services makes no warranties or guarantees as to the completeness or accuracy thereof.

