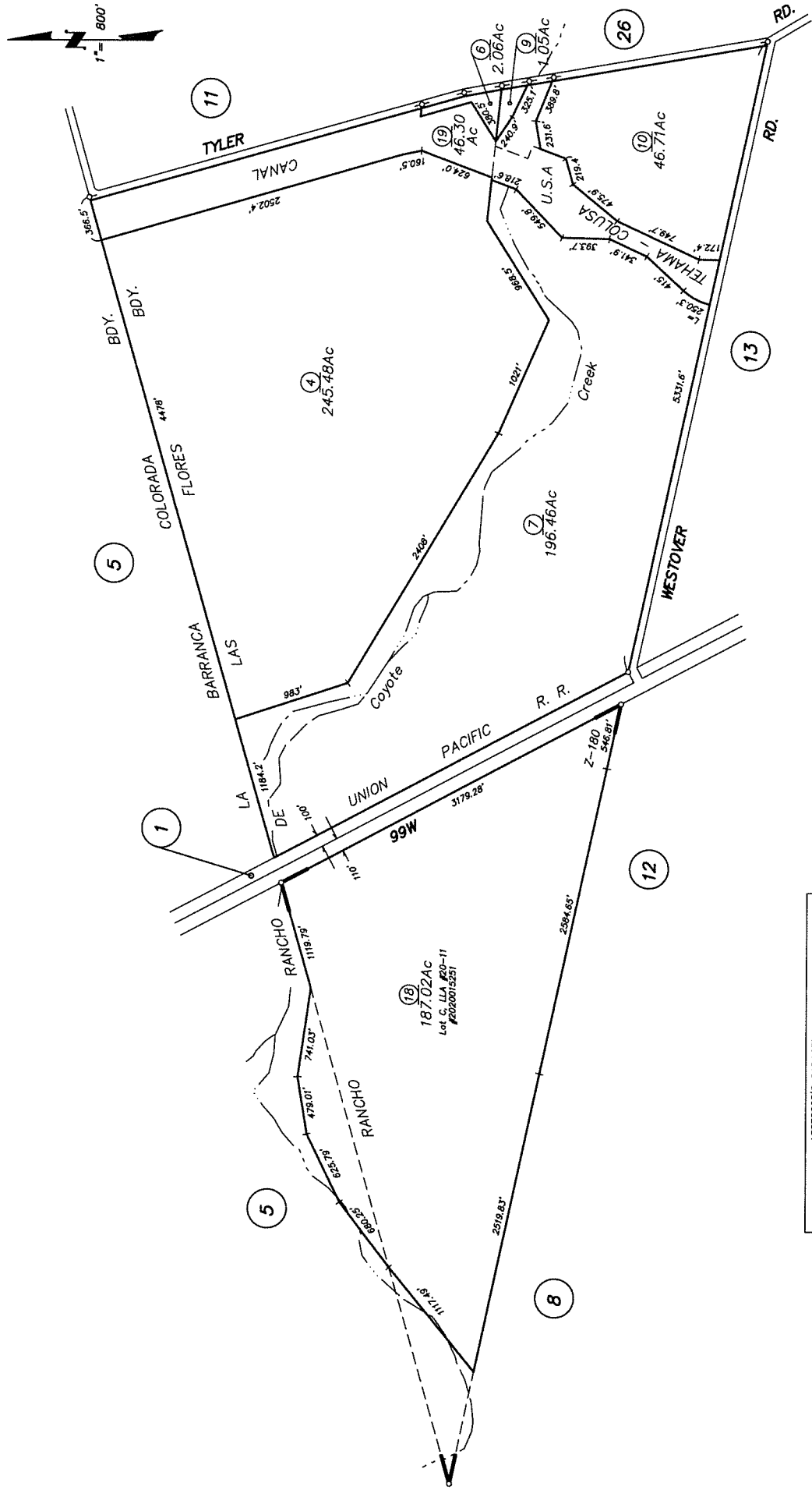


RANCHOS DE LAS FLORES & LA BARRANCA COLORADA

37-10



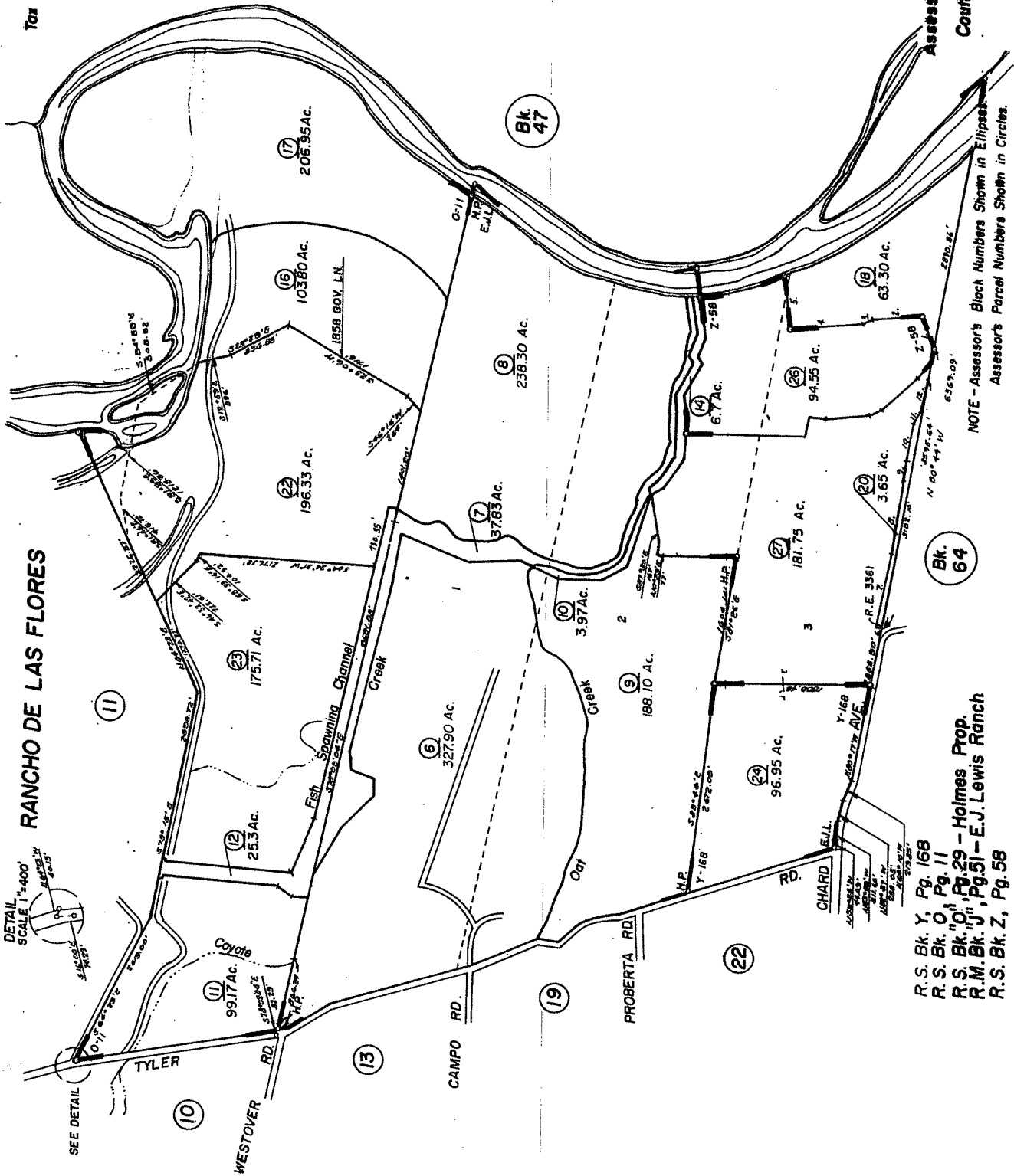
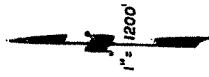
ASSESSOR'S CADASTRAL MAP	
REVISED	12/22/2020 64h

R.S. Bk. Z, Pg. 180

Assessor's Map Bk. 37 -Pg. 10
County of Tehama, Calif.

NOTE- Assessor's Block Numbers Shown in Ellipses
Assessor's Parcel Numbers Shown in Circles

Tox Area Code



- 1. N 69° 27' 21" E 423.44'
- 2. N 05° 46' 54" W 645.03'
- 3. N 07° 07' 00" W 107.43'
- 4. N 05° 32' 03" W 879.36'
- 5. N 81° 54' 01" E 600.71'
- 6. NORTH 60'
- 7. S 79° 59' 10" E 345.49'
- 8. S 01° 38' 54" E 923.78'
- 9. S 36° 18' 50" E 287.82'
- 10. S 79° 54' 08" E 442.80'
- 11. S 05° 57' 54" E 144.10'
- 12. S 75° 03' 56" E 462.46'

Assessor's Map Bk. 37 - Pg. 26
 County of Tehama, Calif.

NOTE - Assessor's Block Numbers Shown in Ellipses
 Assessor's Parcel Numbers Shown in Circles.

R. S. Bk. Y, Pg. 168
 R. S. Bk. O, Pg. 11
 R. S. Bk. D, Pg. 29 - Holmes Prop.
 R. M. Bk. J, Pg. 51 - E. J. Lewis Ranch
 R. S. Bk. Z, Pg. 58