


Yaquina Forest
Lincoln County, OR 28 AC +/-



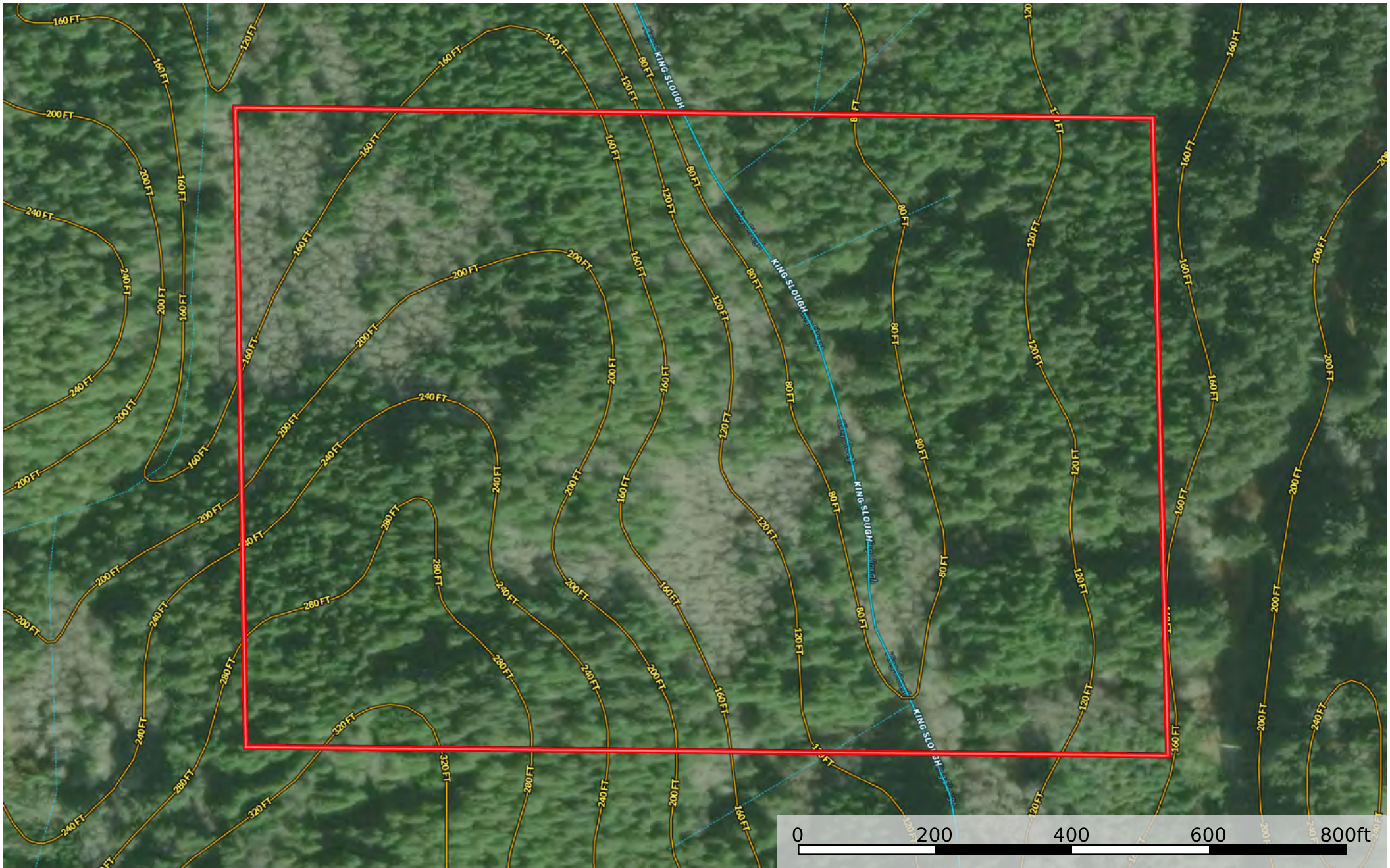
 Boundary




T11S R11W Sec. 28 TL600

 The information contained herein was obtained from sources deemed to be reliable. Land id™ Services makes no warranties or guarantees as to the completeness or accuracy thereof.

Yaquina Forest

Lincoln County, OR 28 AC +/-



 Boundary  Stream, Intermittent  River/Creek

ODF FPA STREAMS MAP

King Slough starts small SSBT/fish perennial surveyed, then turns to none SSBT.
1 small fish assumed seasonal.
4 small non-fish seasonal.



