

# WHISTLE PLACE FARM PHILLIPS COUNTY, AR

1,200± ACRES | \$4,500,000



**SMALLTOWN**  
HUNTING PROPERTIES  
& REAL ESTATE<sup>SM</sup>

OFFICE (769) 888-2522

# WHISTLE PLACE FARM

# PROPERTY PROFILE

## LOCATION:

- Phillips County, AR
- Mississippi River Bottom
- 13± Miles SW of Helena

## COORDINATES:

- 34.387, -90.741

## TAX INFORMATION:

**Taxes: Will be Calculated at Closing**

- Parcel #1: 001-07679-000
- Parcel #2: 001-07680-000
- Parcel #3: 001-07691-000
- Parcel #4: 001-07694-000
- Parcel #5: 001-07685-001(Part Of)
- Parcel #6: 001-07688-000
- Parcel #7: 001-07698-000
- Parcel #8: 001-07721-000

## PROPERTY USE:

- Recreational
- Trophy Hunting
- Investment
- Getaway

## PROPERTY INFORMATION:

- 1,200± Acres on the MS River
- 4 Bedroom, 2 Bath Lodge
- 2.25± Miles of Mississippi River Frontage
- Private Concrete Boat Landing in Place
- Income Producing – Wind Energy Lease
- Largest Deer to Date: 163”- 8 Point Bow Kill
- Established Duck Holes with Blinds
- Wildlife Plots - Most Equipped with Box Stands or Lean To's
- Great Fishing
- Duck Hunting Opportunities on the River
- Miles of Internal Roads
- Beautiful Views of the Mississippi River
- Drivable Access until Helena Gauge Reaches 40 Feet



**SMALLTOWN**  
HUNTING PROPERTIES  
& REAL ESTATE<sup>SM</sup>

**MICHAEL OSWALT, ALC**

PRINCIPAL BROKER


C: 662-719-3967

O: 769-888-2522

[michael@smalltownproperties.com](mailto:michael@smalltownproperties.com)

4848 Main St. - Flora, MS 39071

[smalltownproperties.com](http://smalltownproperties.com)

 /21,000+ Followers

Information is believed to be accurate but not guaranteed.



# WELCOME TO WHISTLE PLACE FARM

WELCOME TO WHISTLE PLACE FARM LOCATED IN THE MISSISSIPPI RIVER BOTTOM, ONE OF THE MOST GAME-RICH AREAS IN THE UNITED STATES. If you look for land along the Mississippi River, you will find plenty of equity share clubs, but not much private ownership remains. Whistle Place lies just eight miles southwest of the Helena Bridge in Phillips County, Arkansas and is accessed by Road 418. After crossing the levee, you will feel the privacy that comes with over 1,200± privately owned acres (additional acreage available). Once you are near the Mississippi River you will see the lodge on the top of a hill, overlooking the river. The gravel driveway to the lodge is nearly one mile long. The current owner constructed the slab foundation cabin on a man-made hill instead of building it on stilts. No need to carry your furniture or groceries upstairs! Surprisingly, the cabin did not flood during the catastrophic 2011 flood so no worry there. Actually, you can drive to the cabin until the Helena gauge reaches 40 feet. The owner also built up more land for additional cabin sites, in the event multiple folks would like to build in the future. The 2,600± square foot lodge was constructed in 2006 and features four bedrooms, two bathrooms, and a great room/kitchen combo with gorgeous views of the river. The utilities include city water, power, and septic sewer.



**SMALLTOWN**  
HUNTING PROPERTIES  
& REAL ESTATE<sup>SM</sup>

**MICHAEL OSWALT, ALC**

PRINCIPAL BROKER

C: 662-719-3967

O: 769-888-2522

[michael@smalltownproperties.com](mailto:michael@smalltownproperties.com)

4848 Main St. - Flora, MS 39071

[smalltownproperties.com](http://smalltownproperties.com)

21,000+ Followers

Information is believed to be accurate but not guaranteed.

# MORE ABOUT WHISTLE PLACE FARM

Outside, you will find a fireplace, cook station, and walk-in cooler. There is also a pole barn for your land maintenance equipment. As you leave the camp area, just pick a road. The miles and miles of roads with the MS River levee road will lead you anywhere you want to go without blowing out your entire farm. The whole property (minus the 14± acre lodge site) was enrolled in the Wetland Reserve Program meaning this place will be an unspoiled recreational paradise until the end of time. You will notice that the development has been done in years past and it will only get better and better. Whistle Place is currently an income producer through a Wind Energy Lease paying approximately \$29/Ac annually. The wind energy project is early in the development stage which could take up to 7 years to complete (more details upon request).

When talking about deer hunting in the southeast, the Mississippi River will quickly become a topic and Whistle Place Farm is no different. The deer hunting is already on a trophy level and should only improve. Numerous wildlife plots are in place with most being equipped with stands. The biggest deer to date is a 163" 8-point bow kill. The Mississippi River flyway has been known for great duck hunting for as long as most people can remember, and Whistle Place sits right in the heart of it. When you put rice and corn a few hundred yards from the river channel, it's a disastrous recipe for the ducks. Two, diesel engine driven wells are in place to guarantee water. The turkey population is thriving with little pressure in recent years. The wintering months should bring wing shooting in the mornings and whitetail chasing in the afternoons. During the summer months, you are sure to find a good eddy on the MS River to catch a catfish or a rock dike to go after those striped bass.



**SMALLTOWN**  
HUNTING PROPERTIES  
& REAL ESTATE<sup>SM</sup>

**MICHAEL OSWALT, ALC**

PRINCIPAL BROKER


C: 662-719-3967

O: 769-888-2522

[michael@smalltownproperties.com](mailto:michael@smalltownproperties.com)

4848 Main St. - Flora, MS 39071

[smalltownproperties.com](http://smalltownproperties.com)

 /21,000+ Followers

Information is believed to be accurate but not guaranteed.



# MORE ABOUT WHISTLE PLACE FARM

You can easily imagine the whole family, not just immediate members, enjoying a place like this for hunting, fishing, boating, riding, a getaway, you name it for years and years to come. The possibilities are endless at Whistle Place Farm.

If you have been wanting your own private Mississippi River Bottom paradise, call **Michael Oswalt** today for your private tour of Whistle Place Farm!



**SMALLTOWN**  
HUNTING PROPERTIES  
& REAL ESTATE<sup>SM</sup>

**MICHAEL OSWALT, ALC**

PRINCIPAL BROKER


C: 662-719-3967

O: 769-888-2522

[michael@smalltownproperties.com](mailto:michael@smalltownproperties.com)

4848 Main St. - Flora, MS 39071

[smalltownproperties.com](http://smalltownproperties.com)

 /21,000+ Followers

Information is believed to be accurate but not guaranteed.





# SMALLTOWN

HUNTING PROPERTIES  
& REAL ESTATE<sup>SM</sup>

**MICHAEL OSWALT, ALC**

PRINCIPAL BROKER

C: 662-719-3967

O: 769-888-2522

[michael@smalltownproperties.com](mailto:michael@smalltownproperties.com)

4848 Main St. - Flora, MS 39071

[smalltownproperties.com](http://smalltownproperties.com)

/21,000+ Followers

Information is believed to be accurate but not guaranteed.



WHISTLE PLACE | 1,200 ± ACRES

PHILLIPS COUNTY, ARKANSAS



**SMALLTOWN**  
HUNTING PROPERTIES  
& REAL ESTATE<sup>SM</sup>

**MICHAEL OSWALT, ALC**

PRINCIPAL BROKER

C: 662-719-3967

O: 769-888-2522

[michael@smalltownproperties.com](mailto:michael@smalltownproperties.com)

4848 Main St. - Flora, MS 39071

[smalltownproperties.com](http://smalltownproperties.com)

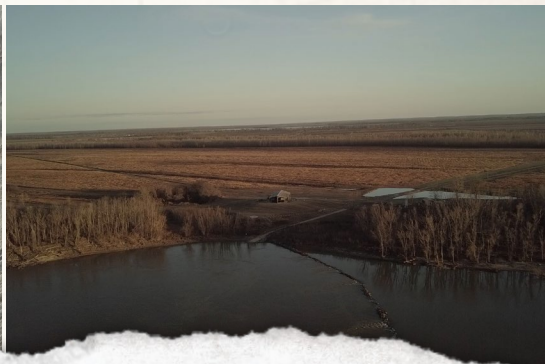
/21,000+ Followers

Information is believed to be accurate but not guaranteed.



WHISTLE PLACE | 1,200 ± ACRES

PHILLIPS COUNTY, ARKANSAS



**SMALLTOWN**  
HUNTING PROPERTIES  
& REAL ESTATE<sup>SM</sup>

**MICHAEL OSWALT, ALC**

PRINCIPAL BROKER


C: 662-719-3967

O: 769-888-2522

[michael@smalltownproperties.com](mailto:michael@smalltownproperties.com)

4848 Main St. - Flora, MS 39071

[smalltownproperties.com](http://smalltownproperties.com)

 21,000+ Followers

Information is believed to be accurate but not guaranteed.



WHISTLE PLACE | 1,200 ± ACRES

PHILLIPS COUNTY, ARKANSAS



**SMALLTOWN**  
HUNTING PROPERTIES  
& REAL ESTATE<sup>SM</sup>

**MICHAEL OSWALT, ALC**

PRINCIPAL BROKER

C: 662-719-3967

O: 769-888-2522

[michael@smalltownproperties.com](mailto:michael@smalltownproperties.com)

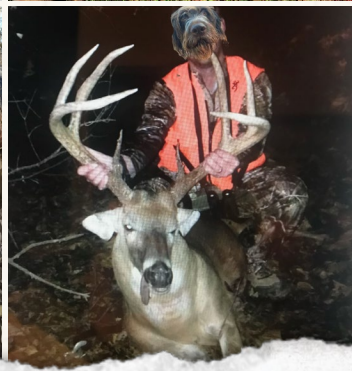
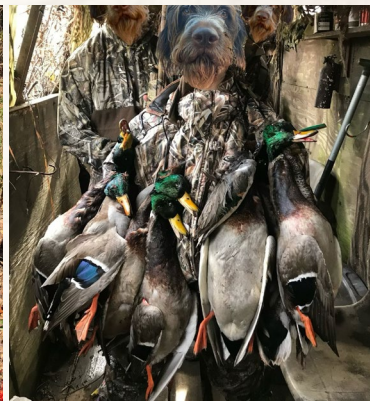
4848 Main St. - Flora, MS 39071

[smalltownproperties.com](http://smalltownproperties.com)

21,000+ Followers

Information is believed to be accurate but not guaranteed.





# SMALLTOWN

HUNTING PROPERTIES  
& REAL ESTATE<sup>SM</sup>

**MICHAEL OSWALT, ALC**  
PRINCIPAL BROKER  
C: 662-719-3967  
O: 769-888-2522

[michael@smalltownproperties.com](mailto:michael@smalltownproperties.com)

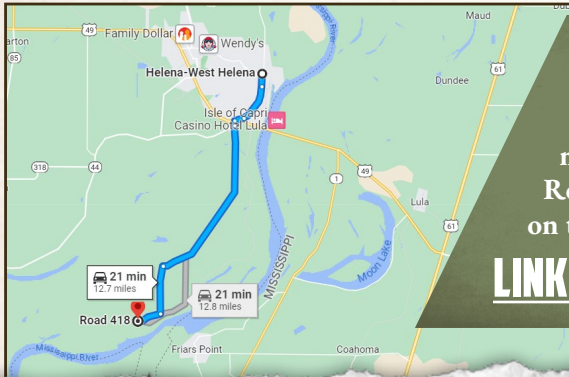
4848 Main St. - Flora, MS 39071

[smalltownproperties.com](http://smalltownproperties.com)

/21,000+ Followers

Information is believed to be accurate but not guaranteed.





Directions from Helena, AR:  
 Travel on Biscoe Street to AR-20  
 W towards Phillips Rd 422 for 12.5  
 miles. Continue straight onto Phillips  
 Rd 422 and the property will be located  
 on the right.

**[LINK TO GOOGLE MAP DIRECTIONS](#)**



**SMALLTOWN**  
 HUNTING PROPERTIES  
 & REAL ESTATE<sup>SM</sup>

**MICHAEL OSWALT, ALC**

PRINCIPAL BROKER

C: 662-719-3967

O: 769-888-2522

[michael@smalltownproperties.com](mailto:michael@smalltownproperties.com)

4848 Main St. - Flora, MS 39071

[smalltownproperties.com](http://smalltownproperties.com)

/21,000+ Followers

Information is believed to be accurate but not guaranteed.