



3585 COUNTY ROAD 2701
TENNESSEE COLONY, TEXAS
FOUR 42' X 500' BARNs | 55 +/- ACRES | 2 MOBILE HOMES



3585 COUNTY ROAD 2701



Investment opportunity to own a Positive-Cash Flow Poultry Breeder Farm in East Texas! Built in 2014, the breeder operation consists of Four 42' x 500' poultry houses with 2 centrally located egg cooler rooms. Each barn includes automatic feeders, waterers, and an automated conveyor system to collect eggs. Houses are in well-maintained and in good condition. **Transferrable Sanderson incentive pay contract in place; includes bonus payout; transferability subject to integrator qualification.** Two 580-foot wells provide water to the entire farm, including to the cool cells in each barn. A Taylor diesel generator with 250-gallon fuel tank provides on-demand power to the barns in the event of an outage. Beyond the barns, the property is fully fenced and cross-fenced with 2 ponds and working pens for cattle. An agriculture tax valuation is currently in place. A 2019 mobile home (3/2) and older single wide (2/1) provide housing for owners and employees. Call for additional details and financial information.



Markham Realty
Selling Quality Texas Properties Since 1970
contact@markhamrealty.com
936-295-5989 | markhamrealty.com



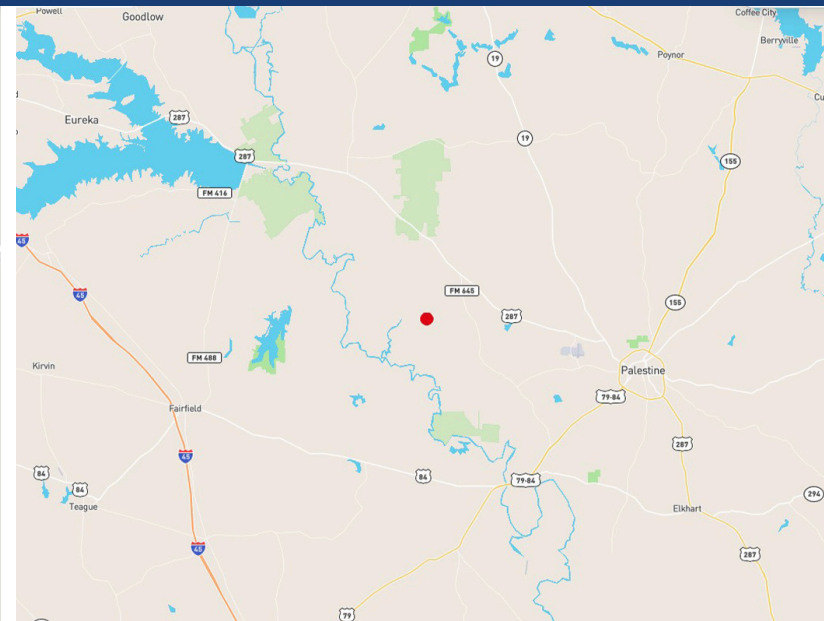
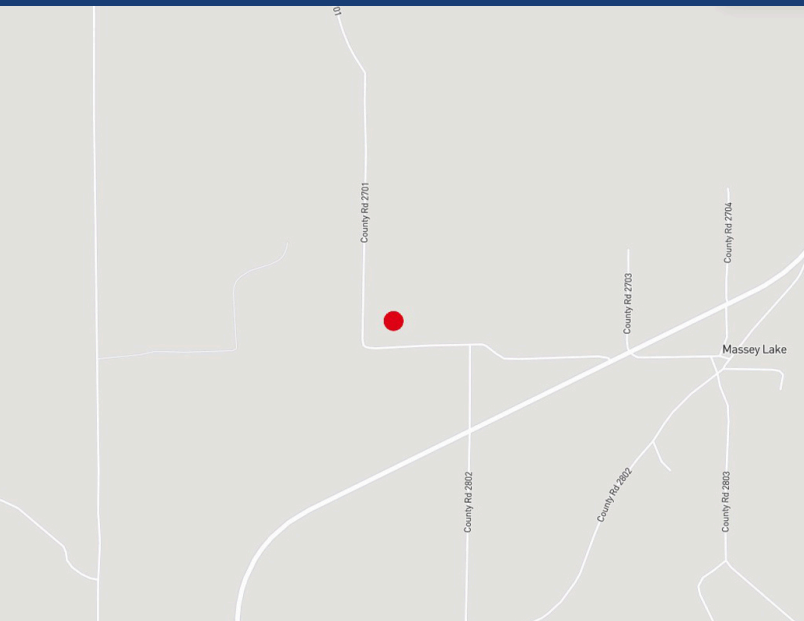
Scan here for additional information & photos.



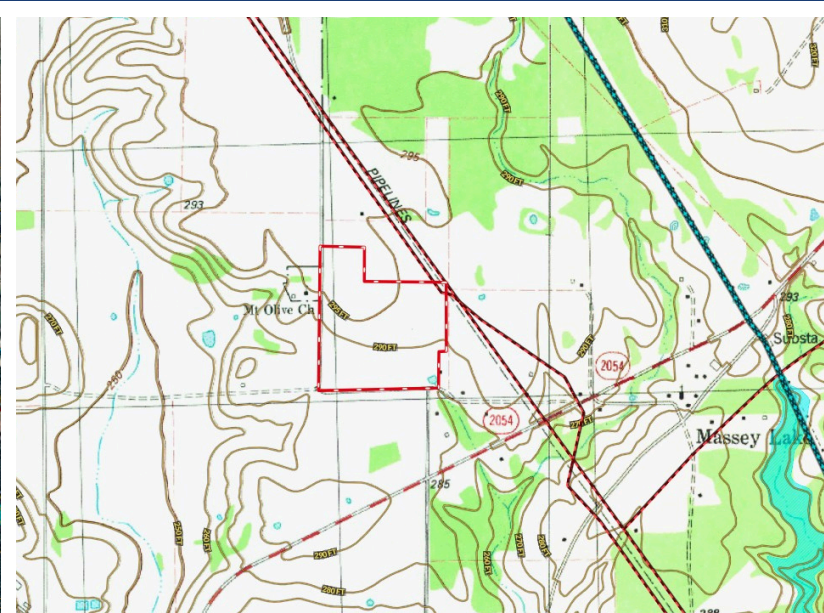
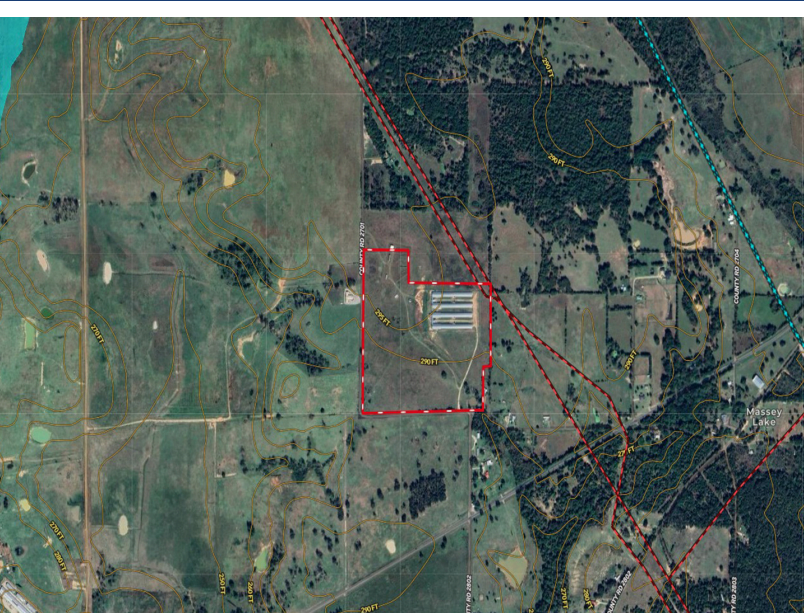
Information furnished is from sources deemed reliable, but is not guaranteed by Markham Realty, Inc. The offerings are subject to change in price, errors, omissions, prior sales, or withdrawal without notice. Square footage, acreage size and lot dimensions are approximate. All persons and firms named in this brochure are licensed brokers or salespersons. Markham Realty, Inc. will co-broker with any licensed Broker if Broker and/or agent accompanies his or her prospective buyer from the first (1st) showing forward.

3585 COUNTY ROAD 2701

TENNESSEE COLONY, TEXAS



Directions: From Houston, I-45 to Exit 178, US-79 in Buffalo. Right US-79 for 26 mi. Right Exit for FM 645. 12 miles to left FM 321. Left FM 2054. Right CR 2701.



Markham Realty
Selling Quality Texas Properties Since 1970
contact@markhamrealty.com
936-295-5989 | markhamrealty.com



Scan here for additional information & photos.



Information furnished is from sources deemed reliable, but is not guaranteed by Markham Realty, Inc. The offerings are subject to change in price, errors, omissions, prior sales, or withdrawal without notice. Square footage, acreage size and lot dimensions are approximate. All persons and firms named in this brochure are licensed brokers or salespersons. Markham Realty, Inc. will co-broker with any licensed Broker if Broker and/or agent accompanies his or her prospective buyer from the first (1st) showing forward.