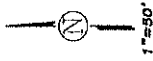
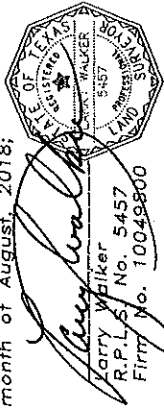


SURVEY PLAT
 Plat showing Lot 33 of EASTDALE ACRES SUBDIVISION, UNIT 1, Cherokee County, Texas as recorded in Cabinet A, Slide 156-B of the Plat Records of Cherokee County, Texas.

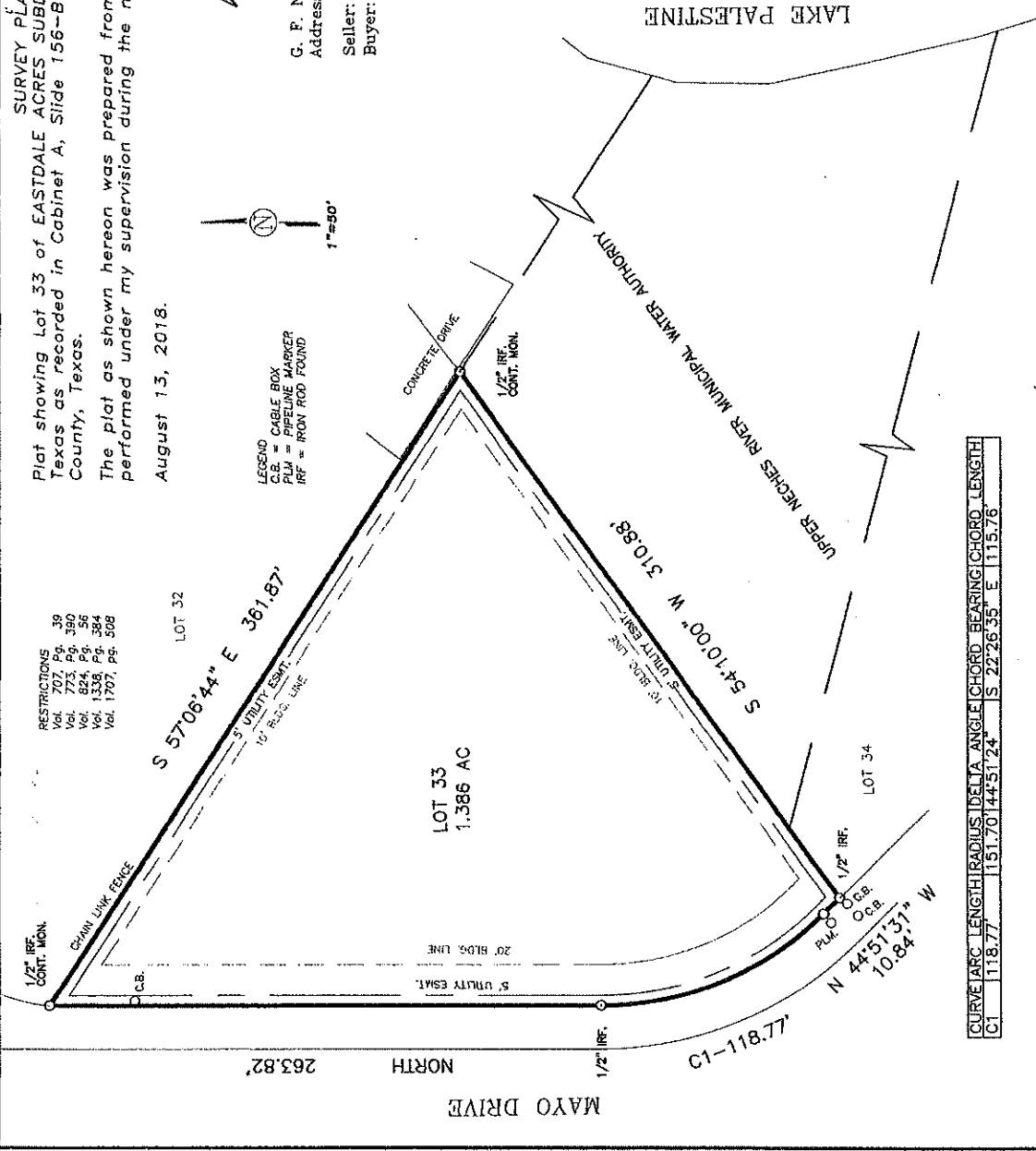
The plat as shown hereon was prepared from an on-the-ground survey performed under my supervision during the month of August, 2018;
 August 13, 2018.



LEGEND
 C.B. = CABLE BOX
 PLM = PIPELINE MARKER
 IRF = IRON ROD FOUND

G. F. No.: 188650
 Address: 345 Mayo Drive
 Seller: Carol A. Tolar, Executor
 Buyer: Evolve Procurement Construction, LLC.

Walker Land Services
 Surveying and Land Planning
 P. O. Box 131767,
 Tyler, Texas 75715
 903-550-0858 EMAIL:
 Twalker240@aol.com



CURVE ARC LENGTH	RADIUS	DELTA ANGLE	CHORD BEARING	CHORD LENGTH
CT 118.77	151.70	144°51'24"	S 22°26'35"	E 115.76

263.82'

47811-13

10.84'

44°51'37"

118.77

151.70

144°51'24"

S 22°26'35"

E 115.76

118.77

151.70

144°51'24"

S 22°26'35"

E 115.76

118.77

151.70

144°51'24"

S 22°26'35"

E 115.76

118.77

151.70

144°51'24"

S 22°26'35"

E 115.76

118.77

151.70

144°51'24"

S 22°26'35"

E 115.76

118.77

151.70

144°51'24"

S 22°26'35"

E 115.76

118.77

151.70

144°51'24"

S 22°26'35"

E 115.76

118.77

151.70

144°51'24"

S 22°26'35"

E 115.76

118.77

151.70

144°51'24"

S 22°26'35"

E 115.76

118.77

151.70

144°51'24"

S 22°26'35"

E 115.76

118.77

151.70

144°51'24"

S 22°26'35"

E 115.76

118.77

151.70

144°51'24"

S 22°26'35"

E 115.76

118.77

151.70

144°51'24"

S 22°26'35"

E 115.76

118.77

151.70

144°51'24"

S 22°26'35"

E 115.76

118.77

151.70

144°51'24"

S 22°26'35"

E 115.76

118.77

151.70

144°51'24"

S 22°26'35"

E 115.76

118.77

151.70

144°51'24"

S 22°26'35"

E 115.76

118.77

151.70

144°51'24"

S 22°26'35"

E 115.76

118.77

151.70

144°51'24"

S 22°26'35"

E 115.76

118.77

151.70

144°51'24"

S 22°26'35"

E 115.76

118.77

151.70

144°51'24"

S 22°26'35"

E 115.76

118.77

151.70

144°51'24"

S 22°26'35"

E 115.76

118.77

151.70

144°51'24"

S 22°26'35"

E 115.76

118.77

151.70

144°51'24"

S 22°26'35"

E 115.76

118.77

151.70

144°51'24"

S 22°26'35"

E 115.76

118.77

151.70

144°51'24"

S 22°26'35"

E 115.76

118.77

151.70

144°51'24"

S 22°26'35"

E 115.76

118.77

151.70

144°51'24"

S 22°26'35"

E 115.76

118.77

151.70

144°51'24"

S 22°26'35"

E 115.76

118.77

151.70

144°51'24"

S 22°26'35"

E 115.76

118.77

151.70

144°51'24"

S 22°26'35"

E 115.76

118.77

151.70

144°51'24"

S 22°26'35"

E 115.76

118.77

151.70

144°51'24"

S 22°26'35"

E 115.76

118.77

151.70

144°51'24"

S 22°26'35"

E 115.76

118.77

151.70

144°51'24"

S 22°26'35"

E 115.76

118.77

151.70

144°51'24"

S 22°26'35"

E 115.76

118.77

151.70

144°51'24"

S 22°26'35"

E 115.76

118.77

151.70

144°51'24"

S 22°26'35"

E 115.76

118.77

151.70

144°51'24"

S 22°26'35"

E 115.76

118.77

151.70

144°51'24"

S 22°26'35"

E 115.76

118.77

151.70

144°51'24"

S 22°26'35"

E 115.76

118.77

151.70

144°51'24"

S 22°26'35"

E 115.76

118.77

151.70

144°51'24"

S 22°26'35"

E 115.76

118.77

151.70

144°51'24"

S 22°26'35"

E 115.76

118.77

151.70

144°51'24"

S 22°26'35"

E 115.76

118.77