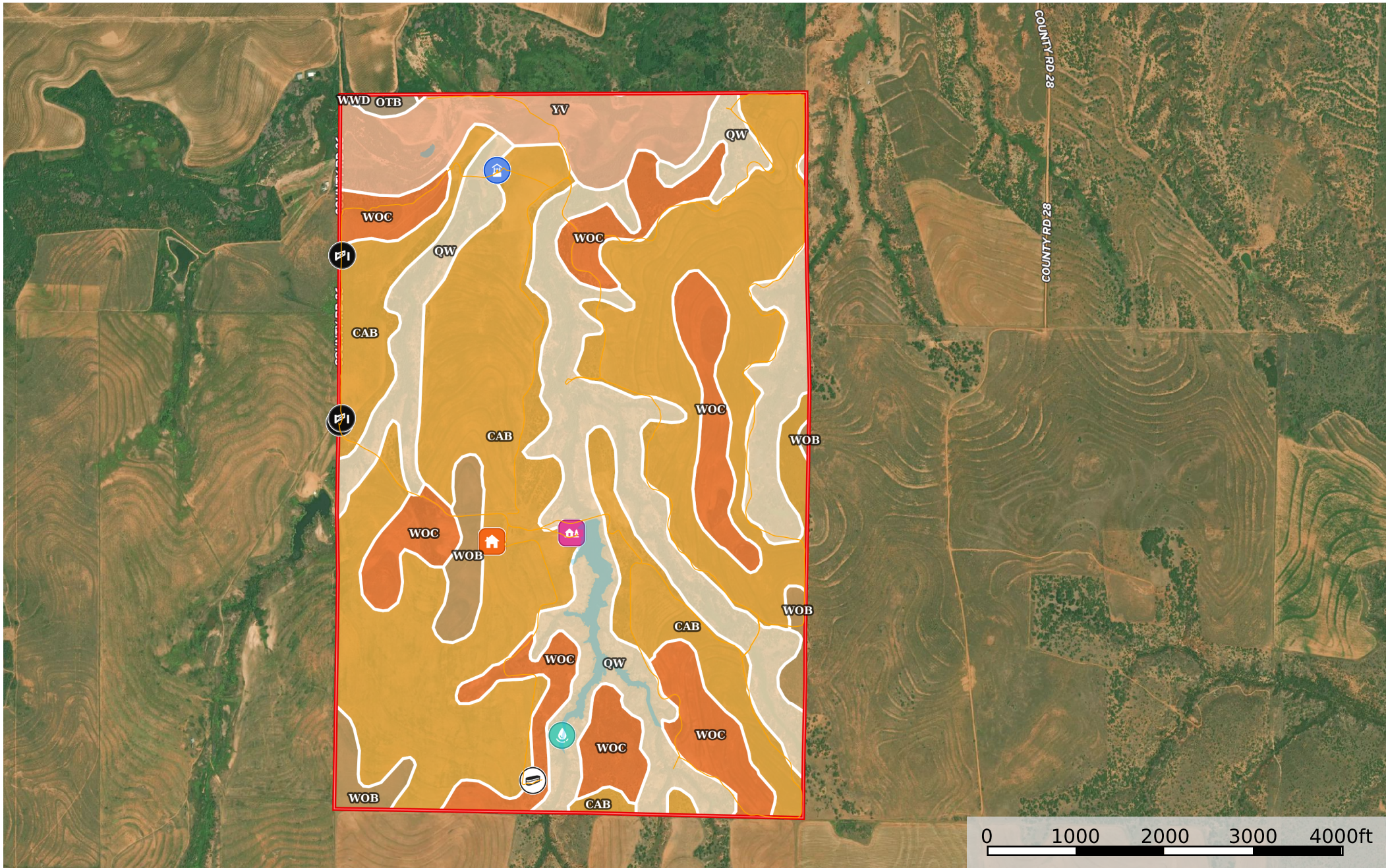


952 Acres, Hall County Texas, AC +/-



- House
- Cabin
- Gate
- Trough
- Spring
- Well
- Track
- Pond / Tank
- Boundary

Boundary 932.65 ac

SOIL CODE	SOIL DESCRIPTION	ACRES	%	CPI	NCCPI	CAP
CaB	Carey loam, 1 to 3 percent slopes	463.9 3	49.74	0	58	2e
Qw	Quinlan-Woodward complex	219.4 6	23.53	0	24	6e
WoC	Woodward loam, 3 to 5 percent slopes, warm	143.6 1	15.4	0	31	3e
Yv	Yomont very fine sandy loam, 0 to 1 percent slopes, occasionally flooded	69.52	7.45	0	48	3e
WoB	Woodward loam, 1 to 3 percent slopes, warm	32.55	3.49	0	36	3e
OtB	Sagerton loam, 1 to 3 percent slopes	3.02	0.32	0	45	2e
WwD	Woodward-Quinlan complex, 5 to 12 percent slopes	0.56	0.06	0	25	6e
TOTALS		932.6 5(*)	100%	-	44.27	3.21

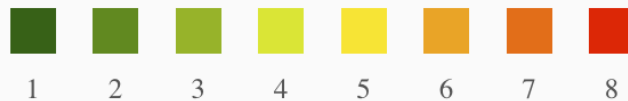
(*) Total acres may differ in the second decimal compared to the sum of each acreage soil. This is due to a round error because we only show the acres of each soil with two decimal.

Capability Legend

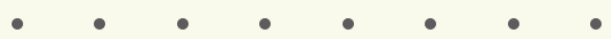
Increased Limitations and Hazards

Decreased Adaptability and Freedom of Choice Users

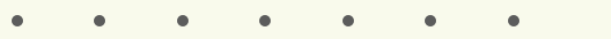
Land, Capability



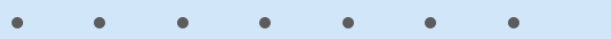
'Wild Life'



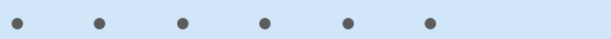
Forestry



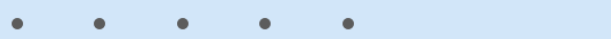
Limited



Moderate



Intense



Limited



Moderate



Intense



Very Intense



Grazing Cultivation

(c) climatic limitations (e) susceptibility to erosion

(s) soil limitations within the rooting zone (w) excess of water