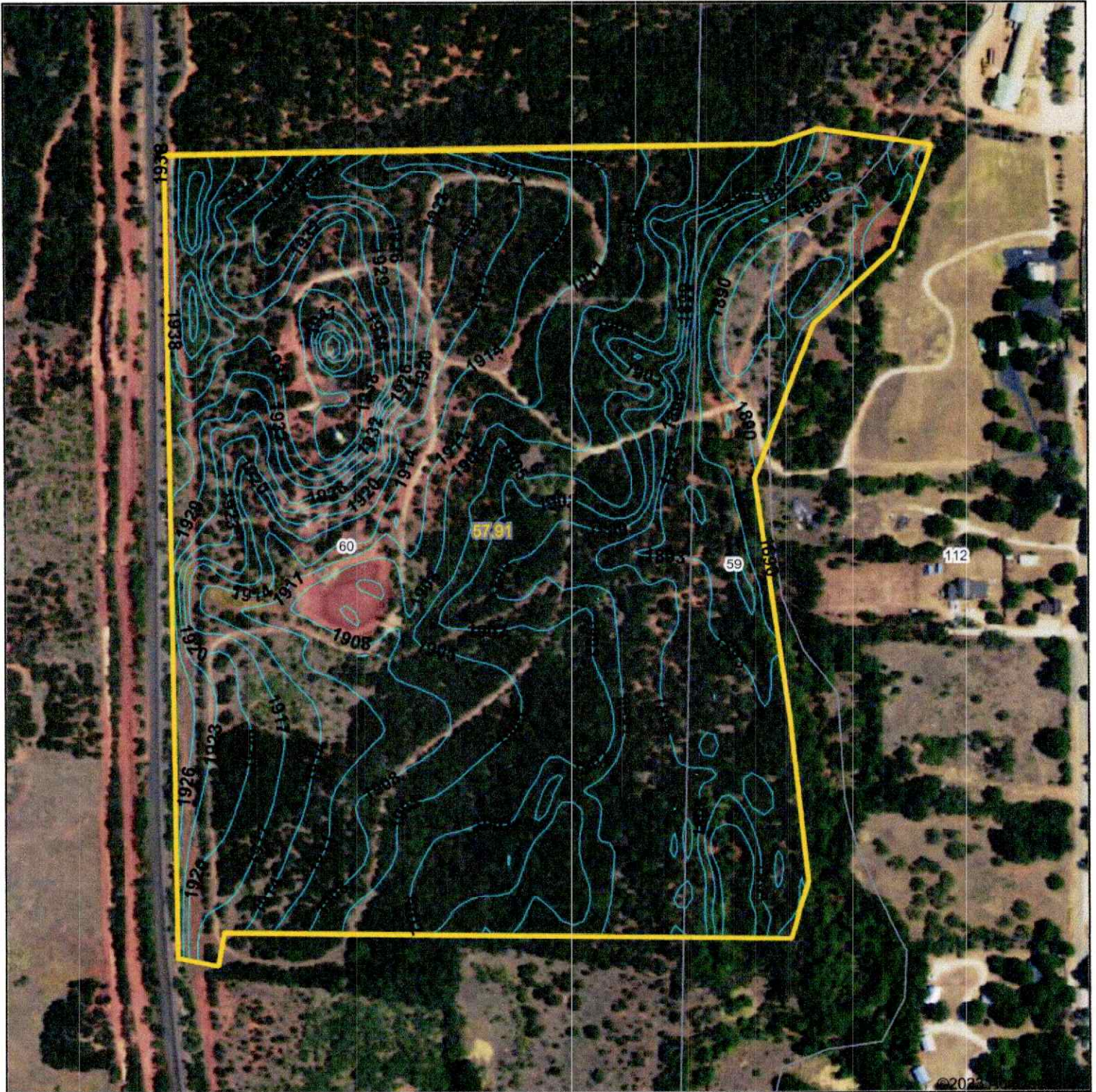


Topography Contours



Source: USGS 10 meter dem

Interval(ft): 3.0

Min: 1,884.4

Max: 1,953.7

Range: 69.3

Average: 1,909.8

Standard Deviation: 13.91 ft

0ft 347ft 694ft



8/1/2023

Taylor County
Texas

Boundary Center: 32° 17' 13.59, -99° 49' 53.9

Maps Provided By:



© AgriData, Inc. 2023 www.AgriDataInc.com