

\$90,000
(Approx. \$6,900/ac)

“Rowe Tract”

*Approx. 13 Acres
Hinds County, MS*



- Located between Utica and Raymond (5 miles from Utica, MS)
- Great rural home site
- Over 1400 feet of Highway 18 frontage
- Mature Timber
- Please contact us for more information!



**Nichols Land
Stewardship, LLC**

**Office: 601-573-1898
Cell: 601-672-6290**

For more information, please contact:

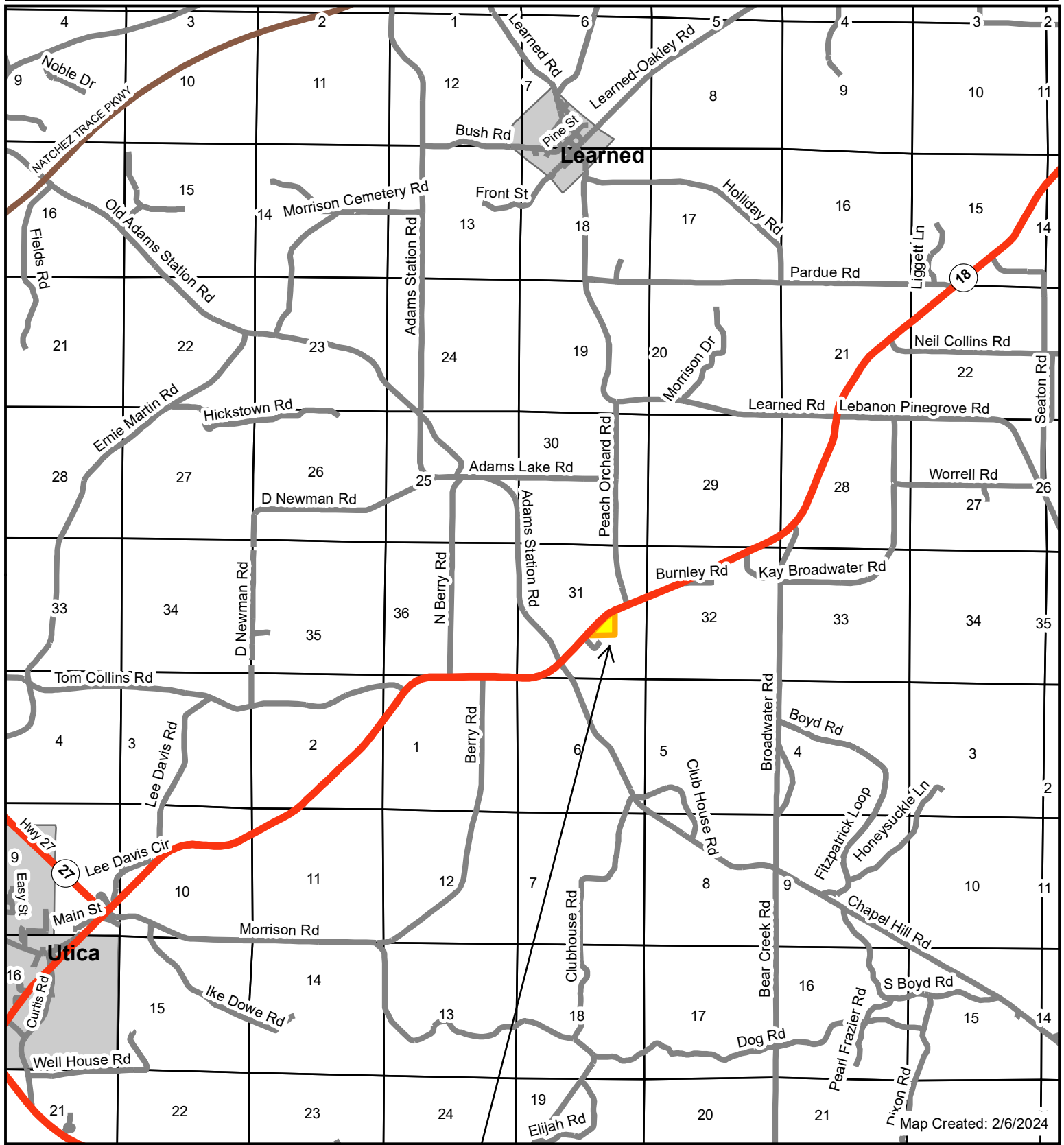



*Buddy Hairston, Sales Agent
601-672-6290 cell
hairstonforestry@bellsouth.net*

Rowe Property

Section 31, Township 4 North, Range 3 West, Hinds County, MS

Location Map



 Subject Tract

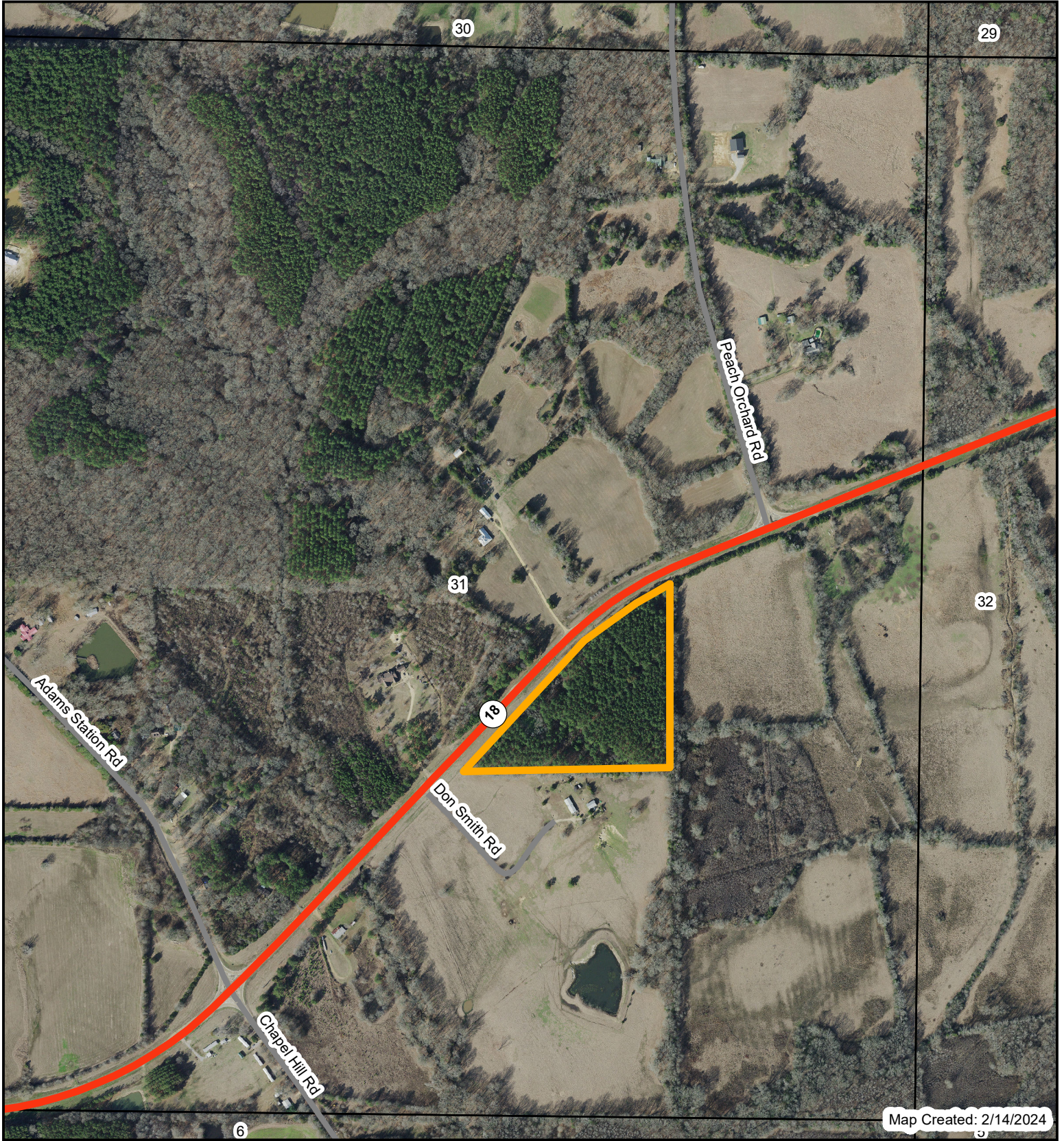


1 inch = 5,280 feet

Rowe Property

Section 31, Township 4 North, Range 3 West, Hinds County, MS

2023 Leaf Off Aerial



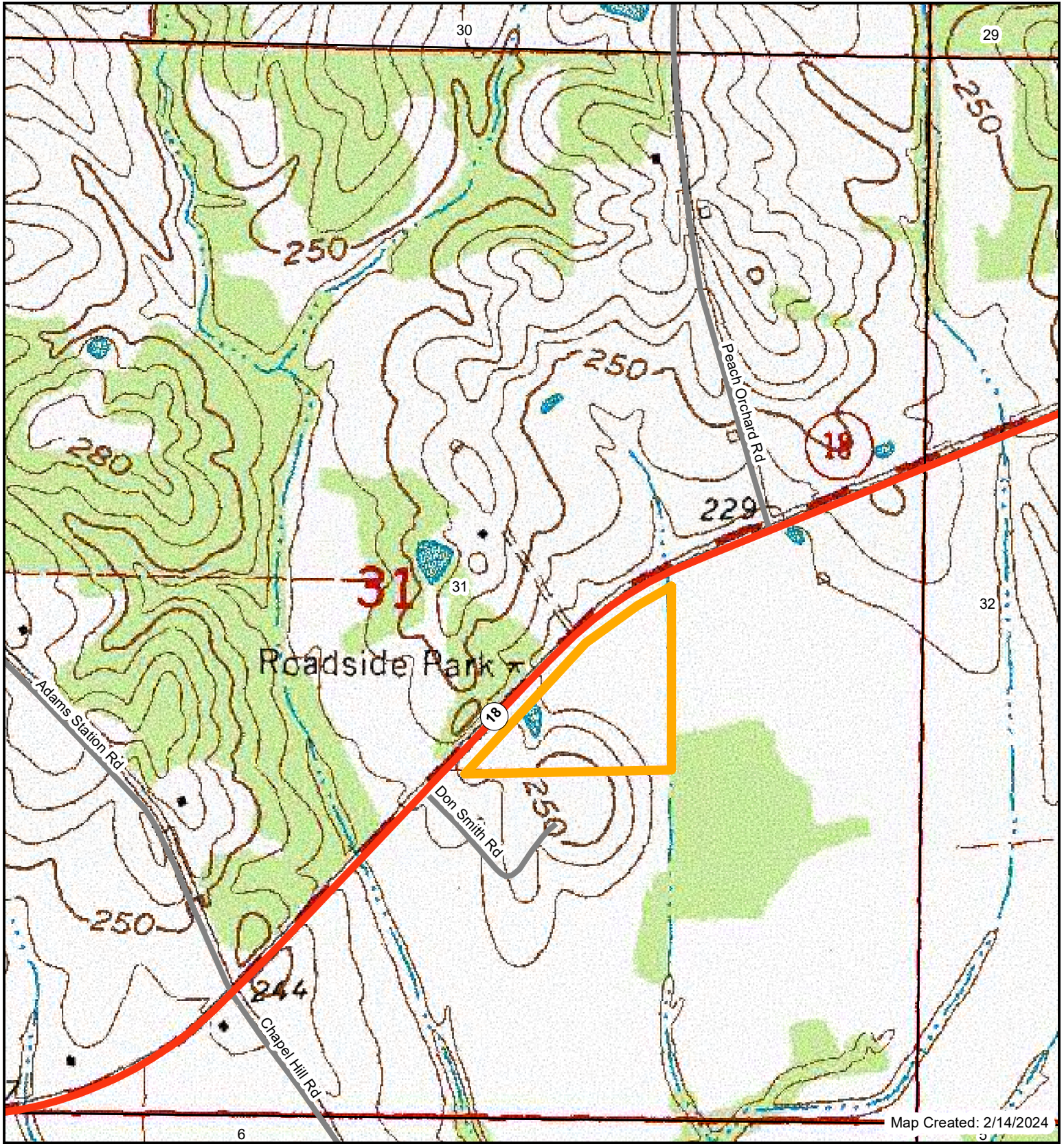
Map Created: 2/14/2024



Rowe Property

Section 31, Township 4 North, Range 3 West, Hinds County, MS

Topo Map



Map Created: 2/14/2024

