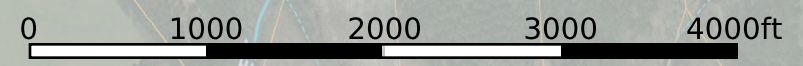
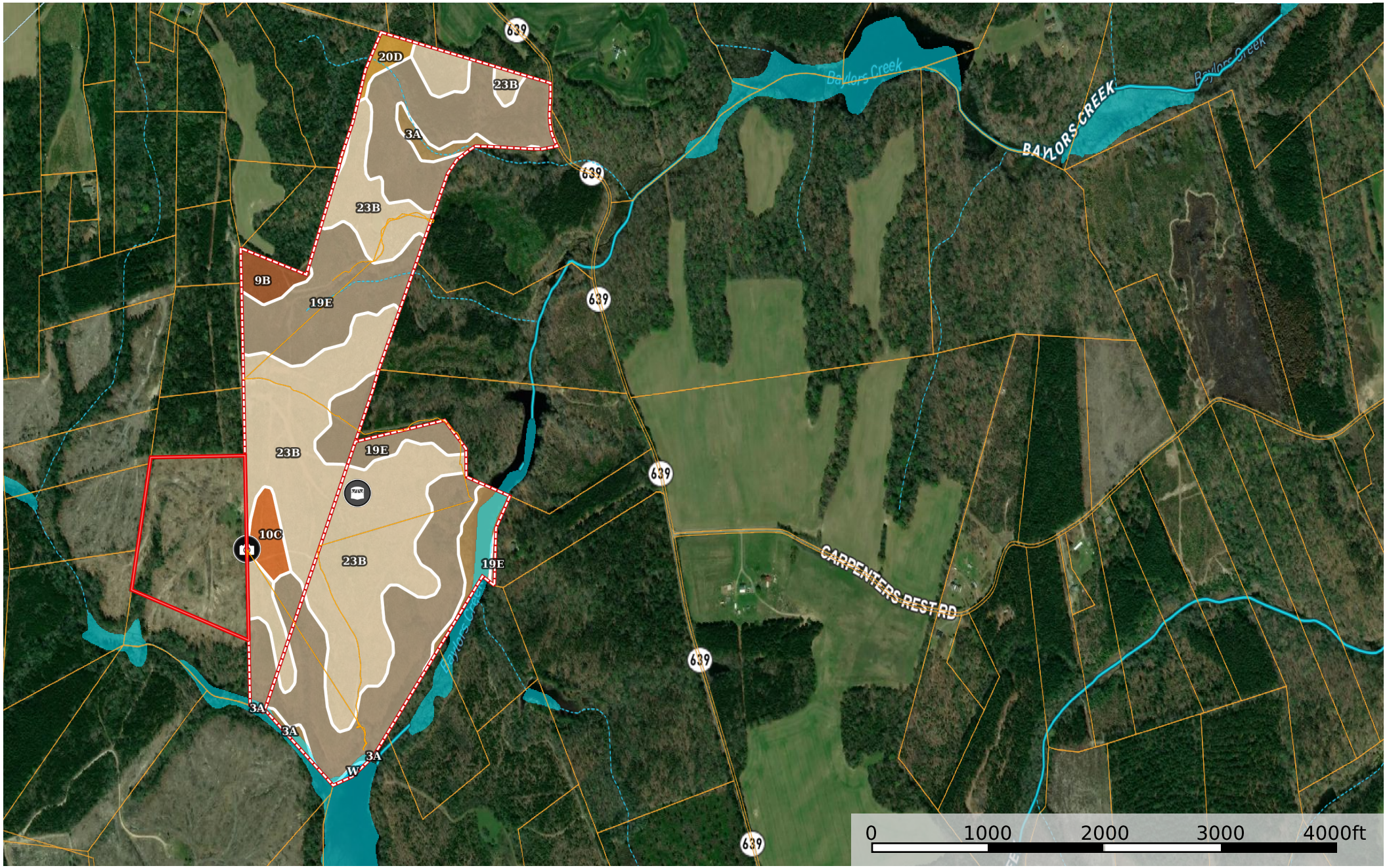


Pine Hill - +/- 150 AC - 2 tracts
 Essex County, Virginia, AC +/-



- Blind
- Photo Point
- Road / Trail
- Primary Road
- Track
- Boundary
- Boundary
- Forest Service
- State Land
- Fish and Wildlife
- National Park
- Other
- BLM
- Local Government
- Stream, Intermittent
- River/Creek
- Water Body
- Voltage Unavailable
- Voltage 0 - 99 KV
- Voltage 100 - 161 KV
- Voltage 220 - 287 KV
- Voltage 345 KV
- Voltage 500 KV
- Voltage 735 KV+
- Substations

 All Polygons 151.91 ac

SOIL CODE	SOIL DESCRIPTION	ACRES	%	CPI	NCCPI	CAP
19E	Rumford and Emporia soils, 15 to 50 percent slopes	69.93	46.03	0	14	7e
23B	Suffolk sandy loam, 2 to 6 percent slopes	66.75	43.94	0	66	2e
3A	Bibb sandy loam, 0 to 2 percent slopes, frequently flooded	7.1	4.67	0	36	5w
10C	Kempsville sandy loam, 6 to 10 percent slopes	3.17	2.09	0	72	3e
9B	Emporia sandy loam, 2 to 6 percent slopes	2.81	1.85	0	78	2e
20D	Rumford and Slagle soils, 6 to 15 percent slopes	1.92	1.26	0	63	4e
W	Water	0.23	0.15	0	-	-
TOTALS		151.9 1(*)	100%	-	40.87	4.49

(*) Total acres may differ in the second decimal compared to the sum of each acreage soil. This is due to a round error because we only show the acres of each soil with two decimal.

 Boundary 91.02 ac

SOIL CODE	SOIL DESCRIPTION	ACRES	%	CPI	NCCPI	CAP
19E	Rumford and Emporia soils, 15 to 50 percent slopes	42.66	46.86	0	14	7e
23B	Suffolk sandy loam, 2 to 6 percent slopes	38.45	42.24	0	66	2e
10C	Kempsville sandy loam, 6 to 10 percent slopes	3.17	3.48	0	72	3e
9B	Emporia sandy loam, 2 to 6 percent slopes	2.81	3.09	0	78	2e
3A	Bibb sandy loam, 0 to 2 percent slopes, frequently flooded	2.01	2.21	0	36	5w
20D	Rumford and Slagle soils, 6 to 15 percent slopes	1.92	2.11	0	63	4e
TOTALS		91.02(*)	100%	-	41.48	4.49

(*) Total acres may differ in the second decimal compared to the sum of each acreage soil. This is due to a round error because we only show the acres of each soil with two decimal.

 Boundary 60.89 ac

SOIL CODE	SOIL DESCRIPTION	ACRES	%	CPI	NCCPI	CAP
23B	Suffolk sandy loam, 2 to 6 percent slopes	28.3	46.48	0	66	2e
19E	Rumford and Emporia soils, 15 to 50 percent slopes	27.27	44.79	0	14	7e
3A	Bibb sandy loam, 0 to 2 percent slopes, frequently flooded	5.09	8.36	0	36	5w
W	Water	0.23	0.38	0	-	-
TOTALS		60.89(*)	100%	-	39.96	4.5









(*) Total acres may differ in the second decimal compared to the sum of each acreage soil. This is due to a round error because we only show the acres of each soil with two decimal.

Capability Legend

Increased Limitations and Hazards

Decreased Adaptability and Freedom of Choice Users

Land, Capability

								
	1	2	3	4	5	6	7	8
'Wild Life'	•	•	•	•	•	•	•	•
Forestry	•	•	•	•	•	•	•	
Limited	•	•	•	•	•	•	•	
Moderate	•	•	•	•	•	•		
Intense	•	•	•	•	•			
Limited	•	•	•	•				
Moderate	•	•	•					
Intense	•	•						
Very Intense	•							

Grazing Cultivation

(c) climatic limitations (e) susceptibility to erosion

(s) soil limitations within the rooting zone (w) excess of water