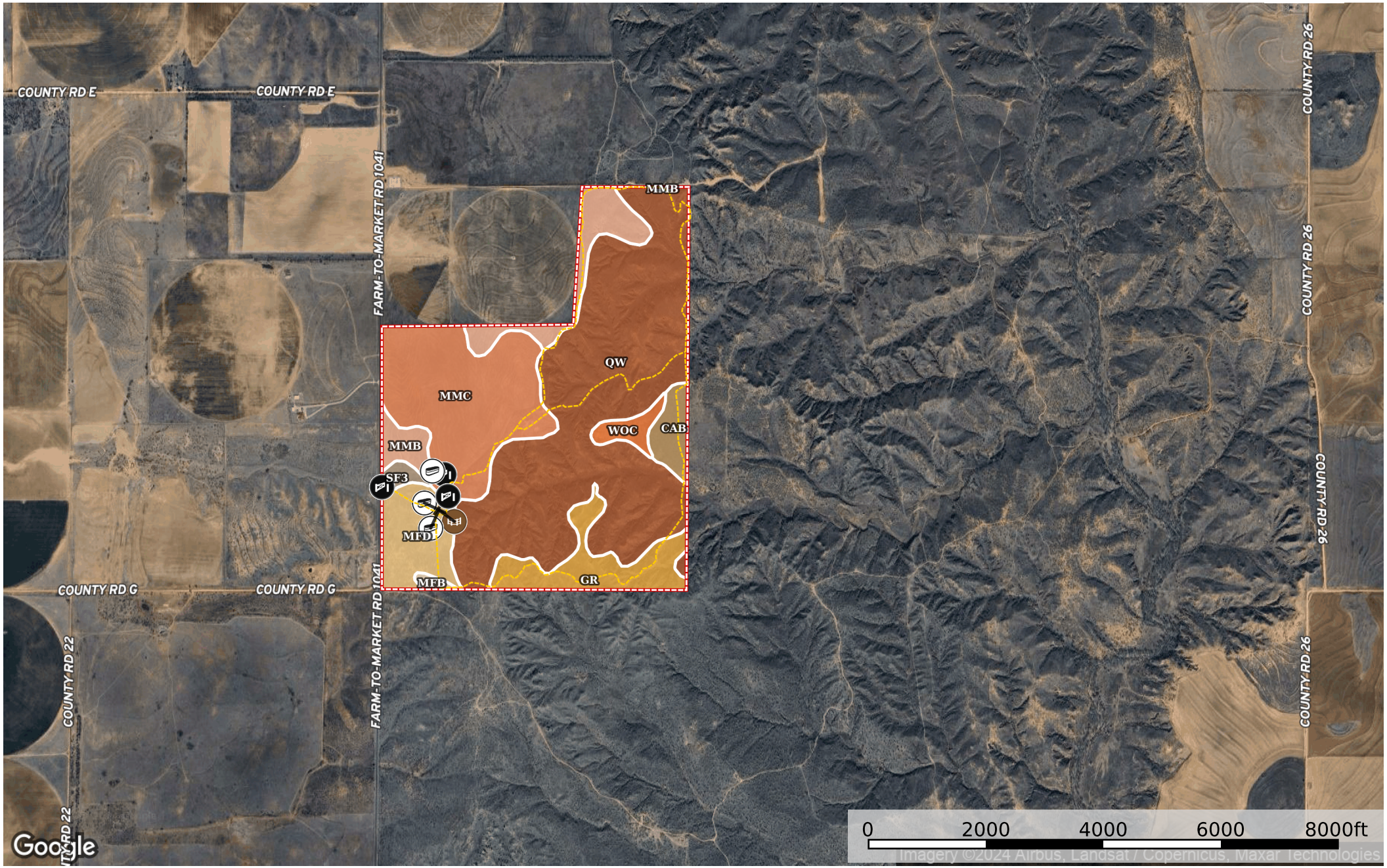


603 Acres, Hall County

Hall County, Texas, AC +/-



- Trough
- Pens
- Gate
- Road / Trail
- Boundary

 Boundary 600.11 ac

SOIL CODE	SOIL DESCRIPTION	ACRES	%	CPI	NCCPI	CAP
Qw	Quinlan-Woodward complex	302.6 8	50.44	0	24	6e
MmC	Miles loamy fine sand, 3 to 5 percent slopes	126.0 6	21.01	0	42	4e
Gr	Polar very gravelly sandy loam, 3 to 25 percent slopes	47.24	7.87	0	21	6s
MmB	Miles loamy fine sand, 0 to 3 percent slopes	46.11	7.68	0	43	3e
MfD	Miles fine sandy loam, 5 to 8 percent slopes	41.9	6.98	0	47	4e
CaB	Carey loam, 1 to 3 percent slopes	16.8	2.8	0	58	2e
WoC	Woodward loam, 3 to 5 percent slopes, warm	10.77	1.79	0	31	3e
Sf3	Springer soils, severely eroded	5.81	0.97	0	29	6e
MfB	Miles fine sandy loam, 1 to 3 percent slopes	2.74	0.46	0	48	3e
TOTALS		600.1 1(*)	100%	-	31.85	5.03









(*) Total acres may differ in the second decimal compared to the sum of each acreage soil. This is due to a round error because we only show the acres of each soil with two decimal.

Capability Legend

Increased Limitations and Hazards

Decreased Adaptability and Freedom of Choice Users

Land, Capability

								
	1	2	3	4	5	6	7	8
'Wild Life'	•	•	•	•	•	•	•	•
Forestry	•	•	•	•	•	•	•	
Limited	•	•	•	•	•	•	•	
Moderate	•	•	•	•	•	•		
Intense	•	•	•	•	•			
Limited	•	•	•	•				
Moderate	•	•	•					
Intense	•	•						
Very Intense	•							

Grazing Cultivation

(c) climatic limitations (e) susceptibility to erosion

(s) soil limitations within the rooting zone (w) excess of water