

R | S

RUPP | STEVEN
ReeceNichols South Central Kansas

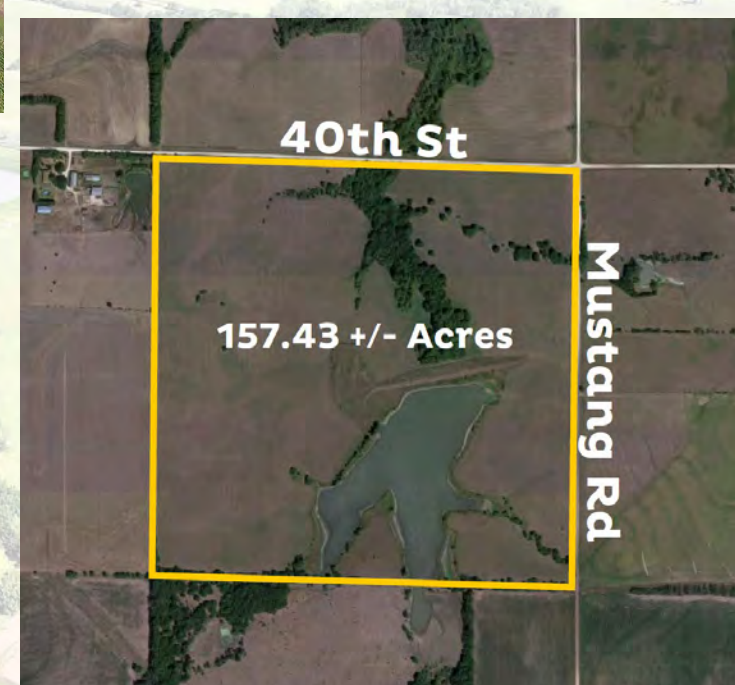
RECREATIONAL LAND MARION COUNTY KANSAS

Location: SW/c of 40th St and Mustang Rd, Peabody, KS
157.43 +/- ACRES - LARGE WATERSHED - PASTURE - TIMBER
WATERFOWL HUNTING - DEER HUNTING - NEAR WICHITA, KS



General Details:

Price: \$739,921.00 (\$4,700.00 per Acre)
Land Size: 157.43 +/- Acres
Legal Description: Long legal. Contact agent.
2023 Taxes: \$622.60
Zoning: Rural Residential
School District: USD 398 - Peabody-Burns
Mineral Rights: Seller's interest transfers
Possession: At closing, subject to tenant's rights



Jake Steven, ALC
316.708.5960
jake@reecenichols.com

John Rupp, ALC
316.250.5198
johnrupp@reecenichols.com

Reese Bayliff
316.258.6062
rbayliff@reecenichols.com

Terry Rupp
316.259.2106
terry@reecenichols.com

R|S

RUPP|STEVEN
ReeceNichols South Central Kansas

RECREATIONAL LAND MARION COUNTY KANSAS

Location: SW/c of 40th St and Mustang Rd, Peabody, KS

**157.43 +/- ACRES - LARGE WATERSHED - PASTURE - TIMBER
WATERFOWL HUNTING - DEER HUNTING - NEAR WICHITA, KS**



Jake Steven, ALC
316.708.5960

jake@reecenichols.com

John Rupp, ALC
316.250.5198

johnrupp@reecenichols.com

Reese Bayliff
316.258.6062

rbayliff@reecenichols.com

Terry Rupp
316.259.2106

terry@reecenichols.com

R|S

RUPP|STEVEN
ReeceNichols South Central Kansas

RECREATIONAL LAND MARION COUNTY KANSAS

Location: SW/c of 40th St and Mustang Rd, Peabody, KS
157.43 +/- ACRES - LARGE WATERSHED - PASTURE - TIMBER
WATERFOWL HUNTING - DEER HUNTING - NEAR WICHITA, KS



Jake Steven, ALC
316.708.5960

jake@reecenichols.com

John Rupp, ALC
316.250.5198

johnrupp@reecenichols.com

Reese Bayliff
316.258.6062

rbayliff@reecenichols.com

Terry Rupp
316.259.2106

terry@reecenichols.com