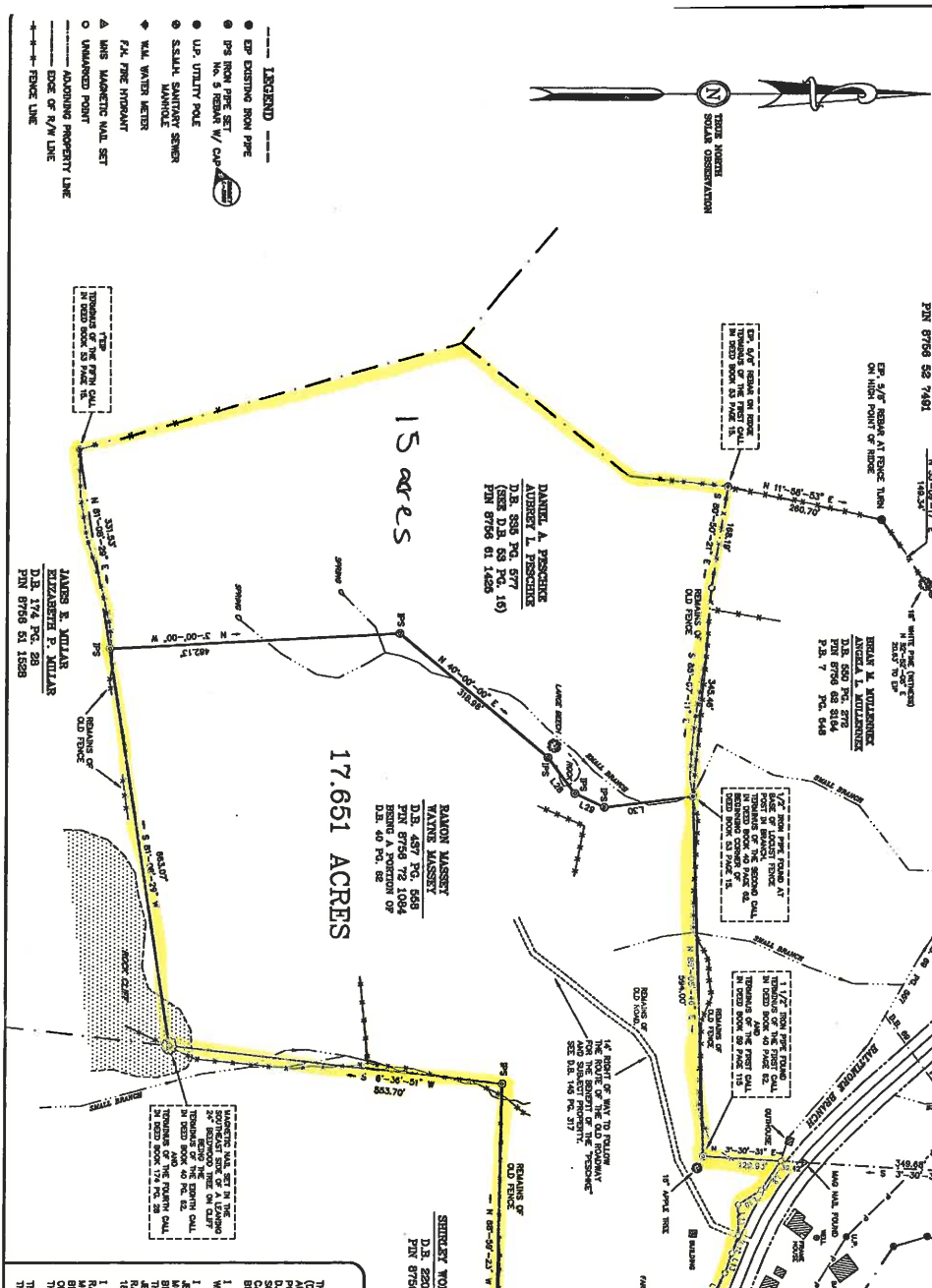


**BOOK 7 PAGE 612 (1)**

Line	Bearing	Distance
1	N 70°-42'-15" E	23.17'
2	S 68°-42'-15" E	18.42'
3	N 70°-42'-15" E	18.42'
4	S 68°-42'-15" E	23.17'
5	N 70°-42'-15" E	18.42'
6	S 68°-42'-15" E	18.42'
7	N 70°-42'-15" E	18.42'
8	S 68°-42'-15" E	18.42'
9	N 70°-42'-15" E	18.42'
10	S 68°-42'-15" E	18.42'
11	N 70°-42'-15" E	18.42'
12	S 68°-42'-15" E	18.42'
13	N 70°-42'-15" E	18.42'
14	S 68°-42'-15" E	18.42'
15	N 70°-42'-15" E	18.42'
16	S 68°-42'-15" E	18.42'
17	N 70°-42'-15" E	18.42'
18	S 68°-42'-15" E	18.42'
19	N 70°-42'-15" E	18.42'
20	S 68°-42'-15" E	18.42'
21	N 70°-42'-15" E	18.42'
22	S 68°-42'-15" E	18.42'
23	N 70°-42'-15" E	18.42'
24	S 68°-42'-15" E	18.42'
25	N 70°-42'-15" E	18.42'
26	S 68°-42'-15" E	18.42'
27	N 70°-42'-15" E	18.42'
28	S 68°-42'-15" E	18.42'
29	N 70°-42'-15" E	18.42'
30	S 68°-42'-15" E	18.42'
31	N 70°-42'-15" E	18.42'
32	S 68°-42'-15" E	18.42'
33	N 70°-42'-15" E	18.42'
34	S 68°-42'-15" E	18.42'
35	N 70°-42'-15" E	18.42'
36	S 68°-42'-15" E	18.42'
37	N 70°-42'-15" E	18.42'
38	S 68°-42'-15" E	18.42'
39	N 70°-42'-15" E	18.42'
40	S 68°-42'-15" E	18.42'
41	N 70°-42'-15" E	18.42'
42	S 68°-42'-15" E	18.42'
43	N 70°-42'-15" E	18.42'
44	S 68°-42'-15" E	18.42'
45	N 70°-42'-15" E	18.42'
46	S 68°-42'-15" E	18.42'
47	N 70°-42'-15" E	18.42'
48	S 68°-42'-15" E	18.42'
49	N 70°-42'-15" E	18.42'
50	S 68°-42'-15" E	18.42'



**BALTIMORE BRANCH ROAD**  
(a.k.a. PAUL BRANCH ROAD)  
S.R. 1151  
60 R/W per NCDOT  
SEE D.B. 219 PG. 811

**RAMON MASSEY**  
D.B. 485 PG. 514  
PIN 8756 71 8991  
P.B. 8 PG. 448

**ROY MASSEY**  
D.B. 286 PG. 271  
PIN 8756 71 4821  
P.B. 8 PG. 813

**RAMON MASSEY**  
WAYNE MASSEY  
D.B. 171 PG. 287  
PIN 8756 72 6174

**SHIRLEY WORLEY HENSELEY**  
D.B. 820 PG. 209  
PIN 8756 70 1843

**VALERIE C. GRAY**  
D.B. 583 PG. 577  
PIN 8756 79 2179  
P.B. 6 PG. 968

**VALERIE C. GRAY**  
D.B. 471 PG. 590  
PIN 8756 82 7864  
P.B. 6 PG. 968

**VALERIE C. GRAY**  
D.B. 471 PG. 590  
PIN 8756 82 8870  
P.B. 6 PG. 968

**ROY GENE MIDDLE**  
D.B. 210 PG. 54  
PIN 8756 52 7461

**DANIEL A. PERSCHKE**  
**ARBERT L. PERSCHKE**  
D.B. 583 PG. 577  
(SEE D.B. 83 PG. 19)  
PIN 8756 81 1428

**RAMON MASSEY**  
**WAYNE MASSEY**  
D.B. 850 PG. 572  
PIN 8756 83 3164  
P.B. 7 PG. 648

**VALERIE C. GRAY**  
D.B. 583 PG. 577  
PIN 8756 79 2179  
P.B. 6 PG. 968

**VALERIE C. GRAY**  
D.B. 471 PG. 590  
PIN 8756 82 7864  
P.B. 6 PG. 968

**VALERIE C. GRAY**  
D.B. 471 PG. 590  
PIN 8756 82 8870  
P.B. 6 PG. 968

**SHIRLEY WORLEY HENSELEY**  
D.B. 820 PG. 209  
PIN 8756 70 1843

**ROY GENE MIDDLE**  
D.B. 210 PG. 54  
PIN 8756 52 7461

**DANIEL A. PERSCHKE**  
**ARBERT L. PERSCHKE**  
D.B. 583 PG. 577  
(SEE D.B. 83 PG. 19)  
PIN 8756 81 1428

**RAMON MASSEY**  
**WAYNE MASSEY**  
D.B. 850 PG. 572  
PIN 8756 83 3164  
P.B. 7 PG. 648

**VALERIE C. GRAY**  
D.B. 583 PG. 577  
PIN 8756 79 2179  
P.B. 6 PG. 968

**VALERIE C. GRAY**  
D.B. 471 PG. 590  
PIN 8756 82 7864  
P.B. 6 PG. 968

**VALERIE C. GRAY**  
D.B. 471 PG. 590  
PIN 8756 82 8870  
P.B. 6 PG. 968

**SHIRLEY WORLEY HENSELEY**  
D.B. 820 PG. 209  
PIN 8756 70 1843

**ROY GENE MIDDLE**  
D.B. 210 PG. 54  
PIN 8756 52 7461

**DANIEL A. PERSCHKE**  
**ARBERT L. PERSCHKE**  
D.B. 583 PG. 577  
(SEE D.B. 83 PG. 19)  
PIN 8756 81 1428

**RAMON MASSEY**  
**WAYNE MASSEY**  
D.B. 850 PG. 572  
PIN 8756 83 3164  
P.B. 7 PG. 648

**VALERIE C. GRAY**  
D.B. 583 PG. 577  
PIN 8756 79 2179  
P.B. 6 PG. 968

**VALERIE C. GRAY**  
D.B. 471 PG. 590  
PIN 8756 82 7864  
P.B. 6 PG. 968

**VALERIE C. GRAY**  
D.B. 471 PG. 590  
PIN 8756 82 8870  
P.B. 6 PG. 968

**SHIRLEY WORLEY HENSELEY**  
D.B. 820 PG. 209  
PIN 8756 70 1843

**ROY GENE MIDDLE**  
D.B. 210 PG. 54  
PIN 8756 52 7461

**THIS IS AN EXISTING PARCEL OF LAND.**

**NOTES**

- AREA BY COORDINATE COMPUTATION
- EXCEPT AS SPECIFICALLY STATED OR SHOWN ON THIS MAP, ALL AREAS, DIMENSIONS, BEARINGS, DISTANCES, COORDINATES, AND POINTS OF INTEREST ARE BASED ON THE FOLLOWING WHICH MAY BE APPLICABLE TO THE ENTIRE SURVEY: CURVED SURVEY EXEMPTIONS AND RIGHTS OF WAY THAT WERE VESTED AT THE TIME THE SETBACK REQUIREMENTS SHOWN HEREON WERE APPLIED TO THE SURVEY. THE SETBACK REQUIREMENTS SHOWN HEREON ARE BASED ON THE FOLLOWING: A. DISTANCE TO THE ADJACENT PROPERTY LINE; B. DISTANCE TO THE ADJACENT PROPERTY LINE AND SHED; C. DISTANCE TO THE ADJACENT PROPERTY LINE AND SHED AND SHED IMPROVEMENTS; D. DISTANCE TO THE ADJACENT PROPERTY LINE AND SHED AND SHED IMPROVEMENTS AND SHED IMPROVEMENTS.
- THERE MAY BE UNDERGROUND LINES, PIPES, AND STRUCTURES THAT ARE NOT SHOWN ON THIS MAP. THE SURVEYOR HAS CONDUCTED VISUAL INSPECTION OF THE AREA AND HAS FOUND NO EVIDENCE OF SUCH STRUCTURES OR LINES.
- ZONING = RA (RESIDENTIAL/AGRICULTURAL)

RECORDED FOR INFORMATION AND RECORDED IN THE PUBLIC RECORDS OF THE STATE OF NORTH CAROLINA IN THE REGISTER OF DEEDS OFFICE OF WAYNE COUNTY, N.C. BY: *Shirley Worley Henseley*

STATE OF NORTH CAROLINA COUNTY OF MADISON DEPARTMENT OF REVENUE REGISTER OF DEEDS *Shirley Worley Henseley*

PROPERTY REFERENCE: D.B. 437 PG. 558 (A PORTION OF D.B. 40 PG. 82) PIN 8756 71 0735

SURVEY FOR: **RAMON MASSEY AND WAYNE MASSEY**

SURVEYOR FOR: *Ramon Massey*

FILED: Madison County, NC 06/25/2013 09:28:15 AM Susan Reeder, Register of Deeds

NUMBER 8 TOWNSHIP MADISON COUNTY, N.C.  
SCALE 1" = 100'  
DATE 4-14-2013  
DAVID B. STUMPERT, P.L.L.C.  
P.O. BOX 2818  
ASPERVILLE, N.C. 28902  
TRIM LICENSE NO.: 2-0245  
PHONE 828 284-1408

FILE NO. 4316-14