

PICTURESQUE 42± ACRES IN BEE COUNTY!

42± ACRES | BEE COUNTY, TEXAS



COLDWELL BANKER

D'ANN HARPER, REALTORS®
LAND & RANCH

Finding You THE PERFECT PLACE TO HANG YOUR HAT

210.483.7500 • TexasLandAndRanch.com



PICTURESQUE 42± ACRES IN BEE COUNTY!

42± ACRES | BEE COUNTY, TX

Discover the perfect opportunity to own a piece of the Lone Star State with this stunning 42 +/- acre property, located just outside the charming town of Beeville, TX. Situated in the heart of Bee County, this multi-use land offers a harmonious blend of natural features that cater to a variety of possibilities.

As you explore this expansive property, you'll find a captivating mixture of brush and open pasture, creating an enchanting landscape that beckons to both nature enthusiasts and those seeking a versatile space for their dreams. Touching the property is blacktop HWY 59, ensuring easy and convenient access to your new haven.

One of the highlights of this land is the presence of beautiful oak and large mesquite trees that are strategically scattered across the terrain. These majestic trees not only enhance the aesthetic appeal but also provide a touch of Texas authenticity. With numerous potential homesites dotting the property, you'll have the freedom to choose the perfect spot to build your dream home or retreat. For those who appreciate exploration, a thoughtfully designed trail system winds its way through the land, allowing you to immerse yourself in the natural beauty and discover hidden corners of the property.

The convenience of available power adds to the property's appeal, making it easier than ever to bring your visions to life. And while you'll revel in the seclusion and serenity of your new property, you'll also enjoy the proximity to Beeville, just a short 3-mile drive away. For more extensive amenities, the bustling city of Corpus Christi is approximately 50 miles away, providing access to beaches, shopping, and entertainment. If the allure of a metropolitan adventure calls, San Antonio is a mere 85 miles from your doorstep.

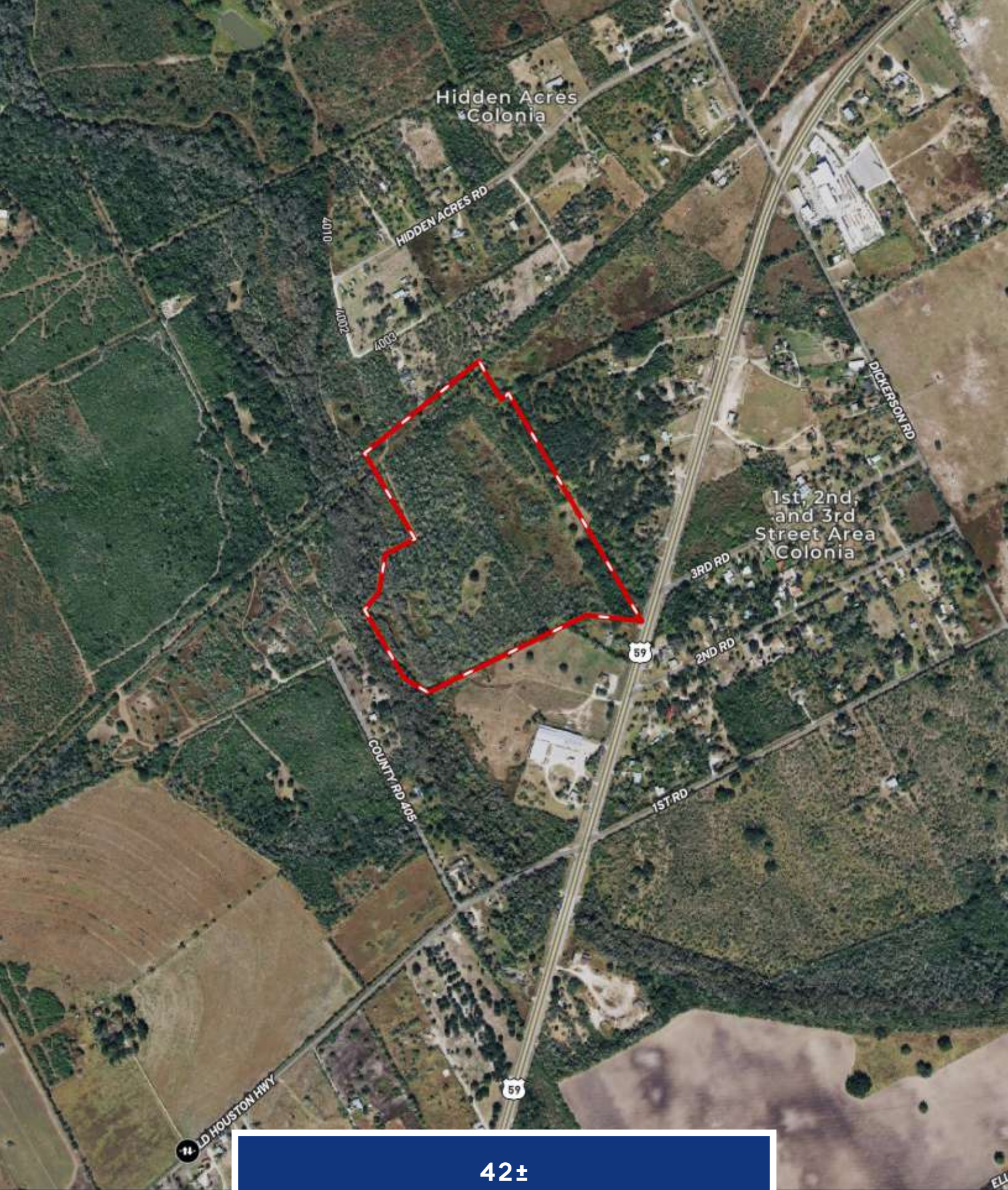
Seize this opportunity to own a piece of Texas paradise, where expansive landscapes, diverse ecosystems, and endless potential converge. Whether you envision a sprawling ranch, a private retreat, or a future investment, this 42-acre property in Bee County offers the canvas for your dreams to flourish. Don't miss out on making this remarkable piece of land your very own.

Contact Gaines Slade today to schedule a tour and experience the enchantment of this Texas gem firsthand. 830.469.3022









Hidden Acres
Colonia

HIDDEN ACRES RD

0107

2007

1003

DICKERSON RD

1st, 2nd,
and 3rd
Street Area
Colonia

3RD RD

2ND RD

59

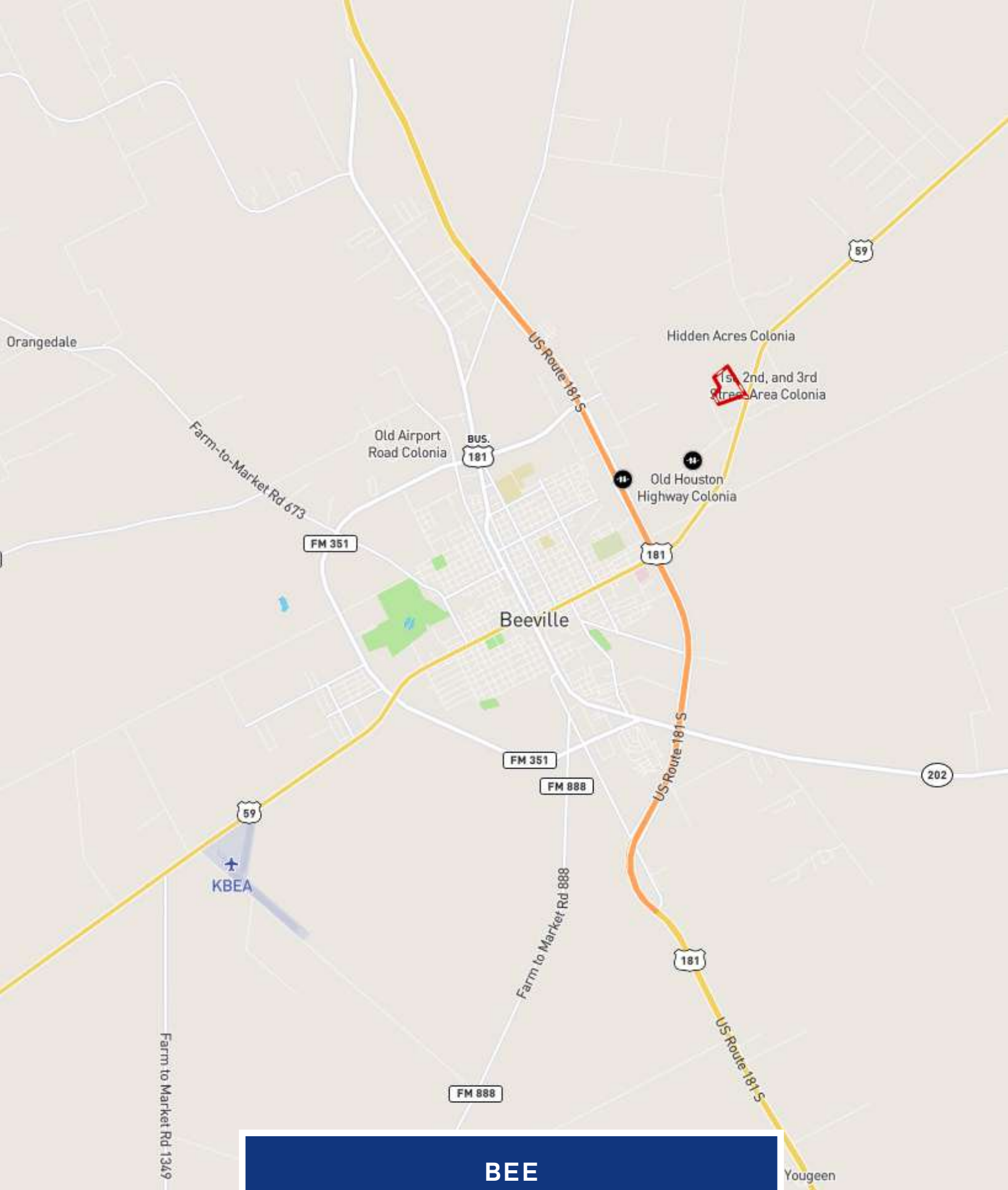
1ST RD

COUNTY RD 405

59

71 OLD HOUSTON HWY

**42±
ACRES**



**BEE
COUNTY**



GAINES SLADE

VICE PRESIDENT OF LAND & RANCH
LAND SPECIALIST

GAINES.SLADE@CBHARPER.COM

830.469.3022



**COLDWELL
BANKER**

D'ANN HARPER, REALTORS®
LAND & RANCH