

83± ACRES
AMITE COUNTY, MS
\$352,750



SMALLTOWN
HUNTING PROPERTIES
& REAL ESTATESM

OFFICE (769) 760-0005

THE AMITE 83

PROPERTY PROFILE

LOCATION:

- Airport Lane
Crosby, MS 39633
- Amite County
- 14± Minutes N of Gloster
- 80± Minutes N of Baton Rouge

COORDINATES:

- 31.292843, -91.054151

PROPERTY USE:

- Deer and Turkey Hunting
- Recreation
- Cabin Site
- Investment

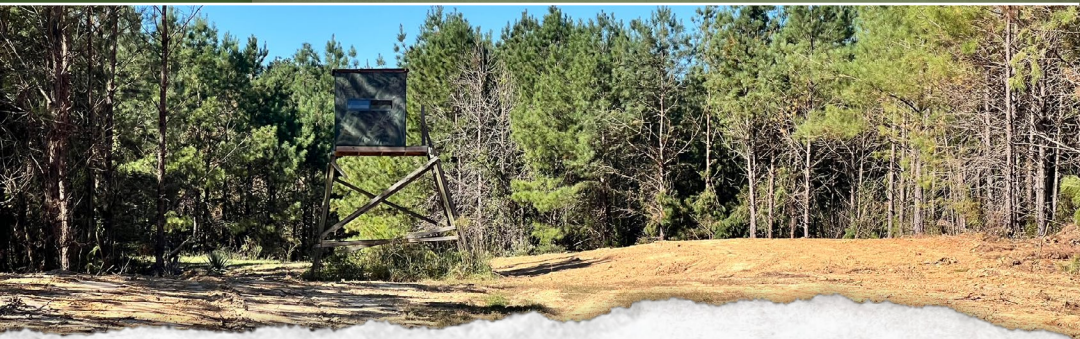
PROPERTY INFORMATION:

- 83± Acres
- County Road Frontage
- Rolling Terrain
- Interior Roads/Trails
- Food Plots
- Mixed Age Pine Timber
- Electricity Available

TAX INFORMATION:

Estimated for 2023 - \$200

- Parcel - Part of
42-900-33-0000200
- Parcel - 42-400-22-0000300



SMALLTOWN
HUNTING PROPERTIES
& REAL ESTATESM

DENNIS WEST

EAST MISSISSIPPI MANAGING BROKER

ALABAMA QUALIFYING BROKER

LOUISIANA ASSOCIATE BROKER

C: 601-248-4396 | O: 769-760-0005

dennis@smalltownproperties.com

2121 5th St., Ste 206 - Meridian, MS 39301

smalltownproperties.com

WELCOME TO THE AMITE 83

WELCOME TO THE AMITE 83, A PRIME OPPORTUNITY FOR DEER AND TURKEY HUNTING ENTHUSIASTS! Situated approximately ten miles north of Gloster, MS, this 83± acre Amite County tract features a mix of pine timber of varying ages, providing an excellent wildlife habitat. Well-maintained trails and established food plots with stands are already in place, making it a turn-key hunting destination. With road frontage on Airport Lane, just minutes from the town of Crosby, and electricity available, the land offers a convenient cabin site for extended stays. The rolling hills add to the scenic beauty, and its location. The property is roughly 80 minutes from Baton Rouge, making it a perfect recreational retreat or investment opportunity.

To explore all this property has to offer, call Dennis West today.



SMALLTOWN
HUNTING PROPERTIES
& REAL ESTATESM

DENNIS WEST

EAST MISSISSIPPI MANAGING BROKER

ALABAMA QUALIFYING BROKER

LOUISIANA ASSOCIATE BROKER

C: 601-248-4396 | O: 769-760-0005

dennis@smalltownproperties.com

2121 5th St., Ste 206 - Meridian, MS 39301

smalltownproperties.com

83 ± ACRES

AMITE COUNTY, MISSISSIPPI



SMALLTOWN

HUNTING PROPERTIES
& REAL ESTATESM

DENNIS WEST

EAST MISSISSIPPI MANAGING BROKER

ALABAMA QUALIFYING BROKER

LOUISIANA ASSOCIATE BROKER

C: 601-248-4396 | O: 769-760-0005

dennis@smalltownproperties.com

2121 5th St., Ste 206 - Meridian, MS 39301

smalltownproperties.com

Information is believed to be accurate but not guaranteed.

83 ± ACRES

AMITE COUNTY, MISSISSIPPI



SMALLTOWN
HUNTING PROPERTIES
& REAL ESTATESM

DENNIS WEST

EAST MISSISSIPPI MANAGING BROKER

ALABAMA QUALIFYING BROKER

LOUISIANA ASSOCIATE BROKER

C: 601-248-4396 | O: 769-760-0005

dennis@smalltownproperties.com

2121 5th St., Ste 206 - Meridian, MS 39301

smalltownproperties.com

Information is believed to be accurate but not guaranteed.

83 ± ACRES

AMITE COUNTY, MISSISSIPPI



SMALLTOWN

HUNTING PROPERTIES
& REAL ESTATESM

DENNIS WEST

EAST MISSISSIPPI MANAGING BROKER

ALABAMA QUALIFYING BROKER

LOUISIANA ASSOCIATE BROKER

C: 601-248-4396 | O: 769-760-0005

dennis@smalltownproperties.com

2121 5th St., Ste 206 - Meridian, MS 39301

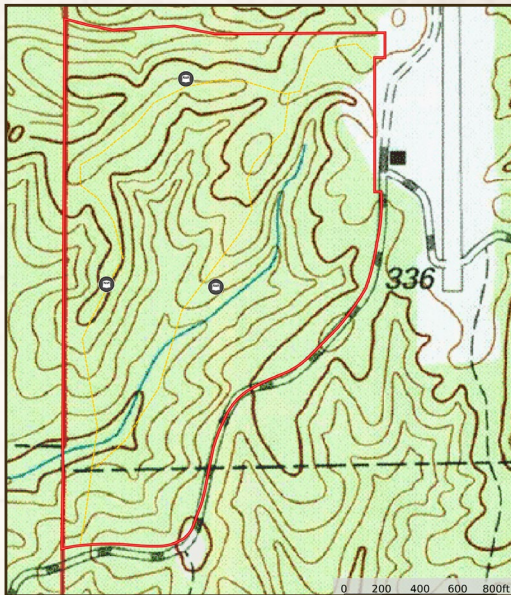
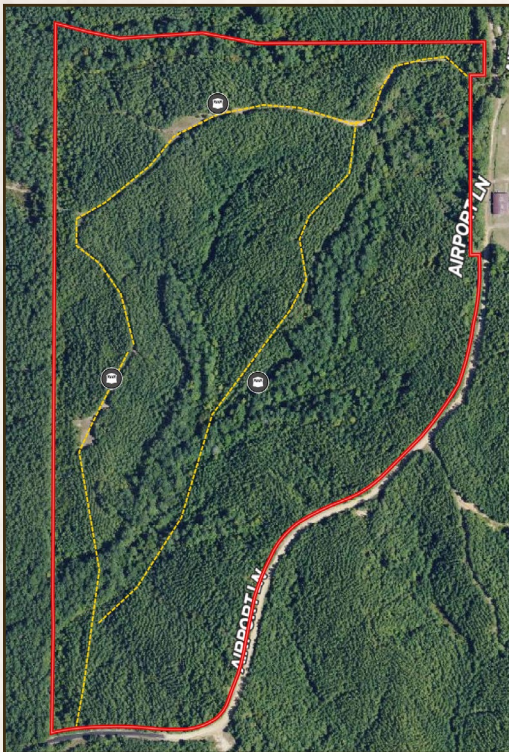
smalltownproperties.com

83 ± ACRES

AMITE COUNTY, MISSISSIPPI

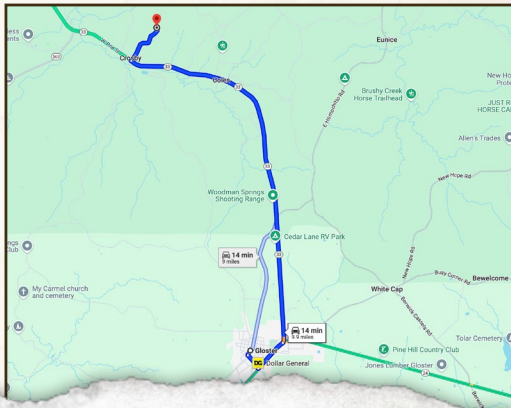
land id. LINK

TOPOGRAPHY MAP



Directions from Gloster, MS: Travel north on Hwy 33 to Airport Lane at Crosby, Take Airport Lane north two miles to property on left.

[LINK TO GOOGLE MAP DIRECTIONS](#)



SMALLTOWN
HUNTING PROPERTIES
& REAL ESTATESM

DENNIS WEST

EAST MISSISSIPPI MANAGING BROKER

ALABAMA QUALIFYING BROKER

LOUISIANA ASSOCIATE BROKER

C: 601-248-4396 | O: 769-760-0005

dennis@smalltownproperties.com

2121 5th St., Ste 206 - Meridian, MS 39301

smalltownproperties.com

Information is believed to be accurate but not guaranteed.