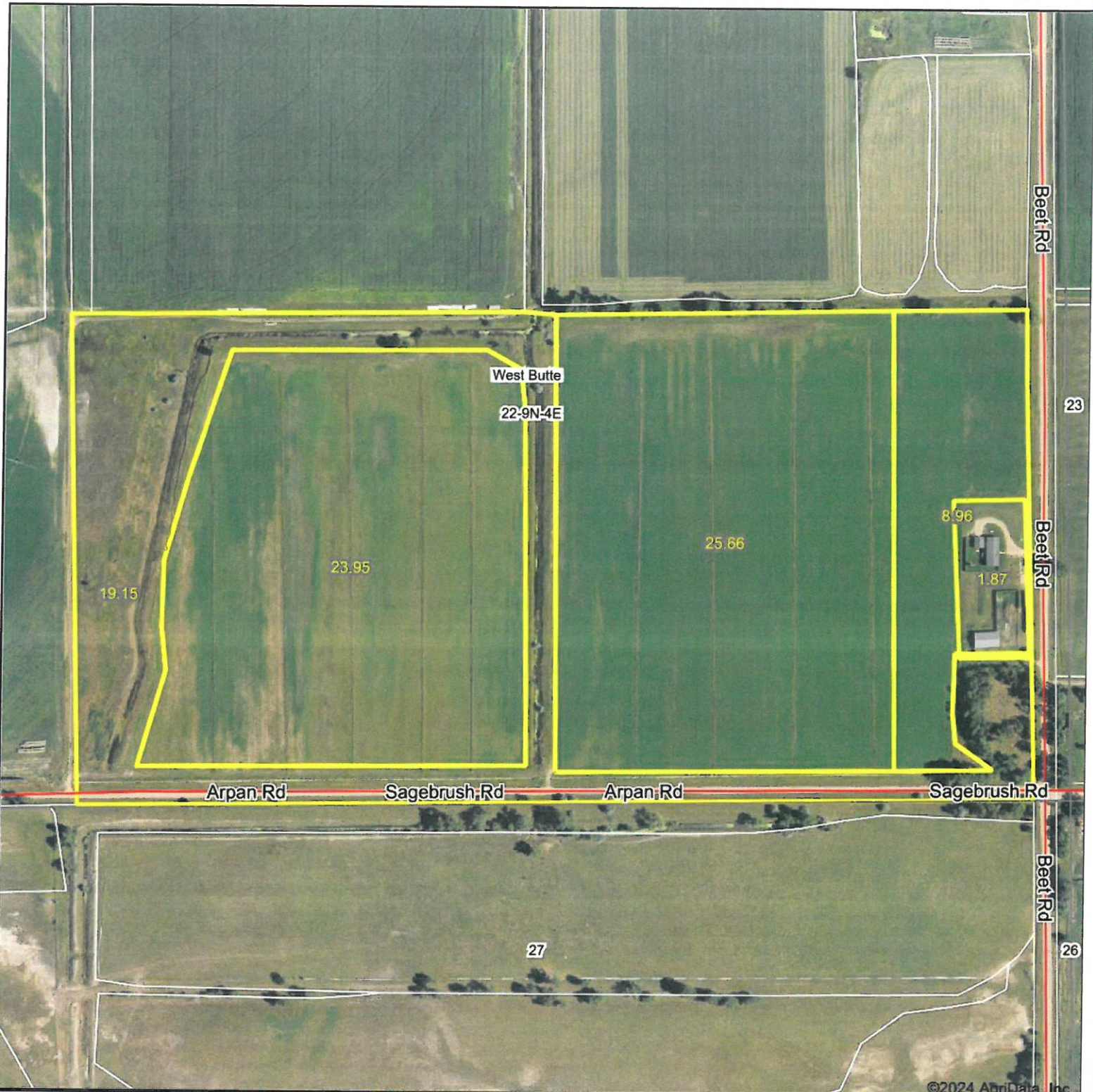


# Aerial Map



©2024 AgriData, Inc.

Maps are for visual aid only.  
Accuracy cannot be guaranteed.

Boundary Center: 44° 43' 18.03, -103° 36' 48.37



Kellen Williams Realty Black Hills

**22-9N-4E**  
**Butte County**  
**South Dakota**



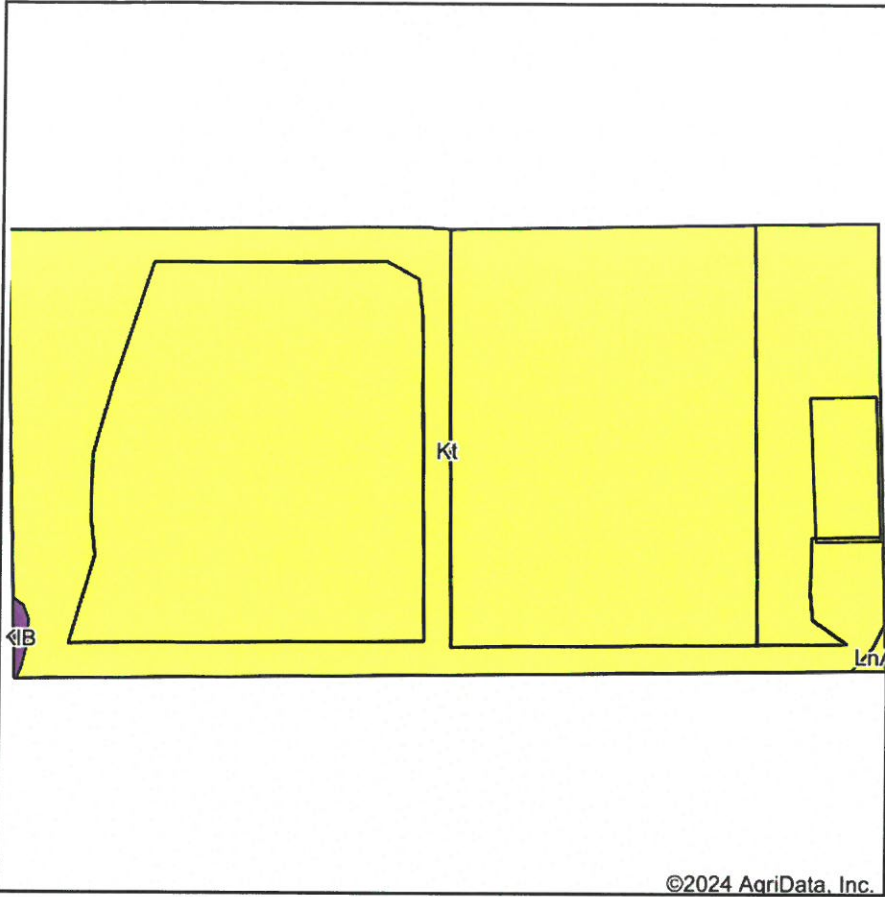
Maps Provided By:  
**surety**  
CUSTOMIZED ONLINE MAPPING  
© AgriData, Inc. 2023 www.AgriDataInc.com

9/5/2024

Field borders provided by Farm Service Agency as of 5/21/2008.

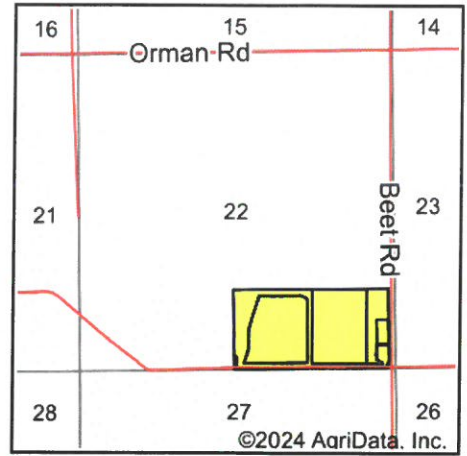


# Soils Map



©2024 AgriData, Inc.

Soils data provided by USDA and NRCS.



State: **South Dakota**  
 County: **Butte**  
 Location: **22-9N-4E**  
 Township: **West Butte**  
 Acres: **79.59**  
 Date: **9/5/2024**

Maps Provided By:



Area Symbol: SD019, Soil Area Version: 27

Code	Soil Description	Acres	Percent of field	PI Legend	Non-Irr Class *c	Irr Class *c	Productivity Index	Alfalfa hay Tons	Alfalfa hay Irrigated Tons	Grain sorghum Bu	Oats Bu	Spring wheat Bu	Tall wheatgrass AUM	Winter wheat Bu	*n NCCPI Soybeans
Kt	Kyle clay, terrace	79.28	99.6%		IVs	IVs	65	1.2		32	28	20	2	23	20
KIB	Kyle clay, 2 to 6 percent slopes	0.17	0.2%		IVe		52								26
LnA	Lohmiller silty clay loam, 0 to 2 percent slopes	0.14	0.2%		IIIc	IIIe	66	1.7	4		31	21	2.8	30	39
<b>Weighted Average</b>					<b>4.00</b>	<b>*-</b>	<b>65</b>	<b>1.2</b>	<b>*-</b>	<b>31.9</b>	<b>27.9</b>	<b>20</b>	<b>2</b>	<b>23</b>	<b>*n 20</b>

\*n: The aggregation method is "Weighted Average using all components"

\*c: Using Capabilities Class Dominant Condition Aggregation Method

\*- Irr Class weighted average cannot be calculated on the current soils data due to missing data.

Soils data provided by USDA and NRCS.