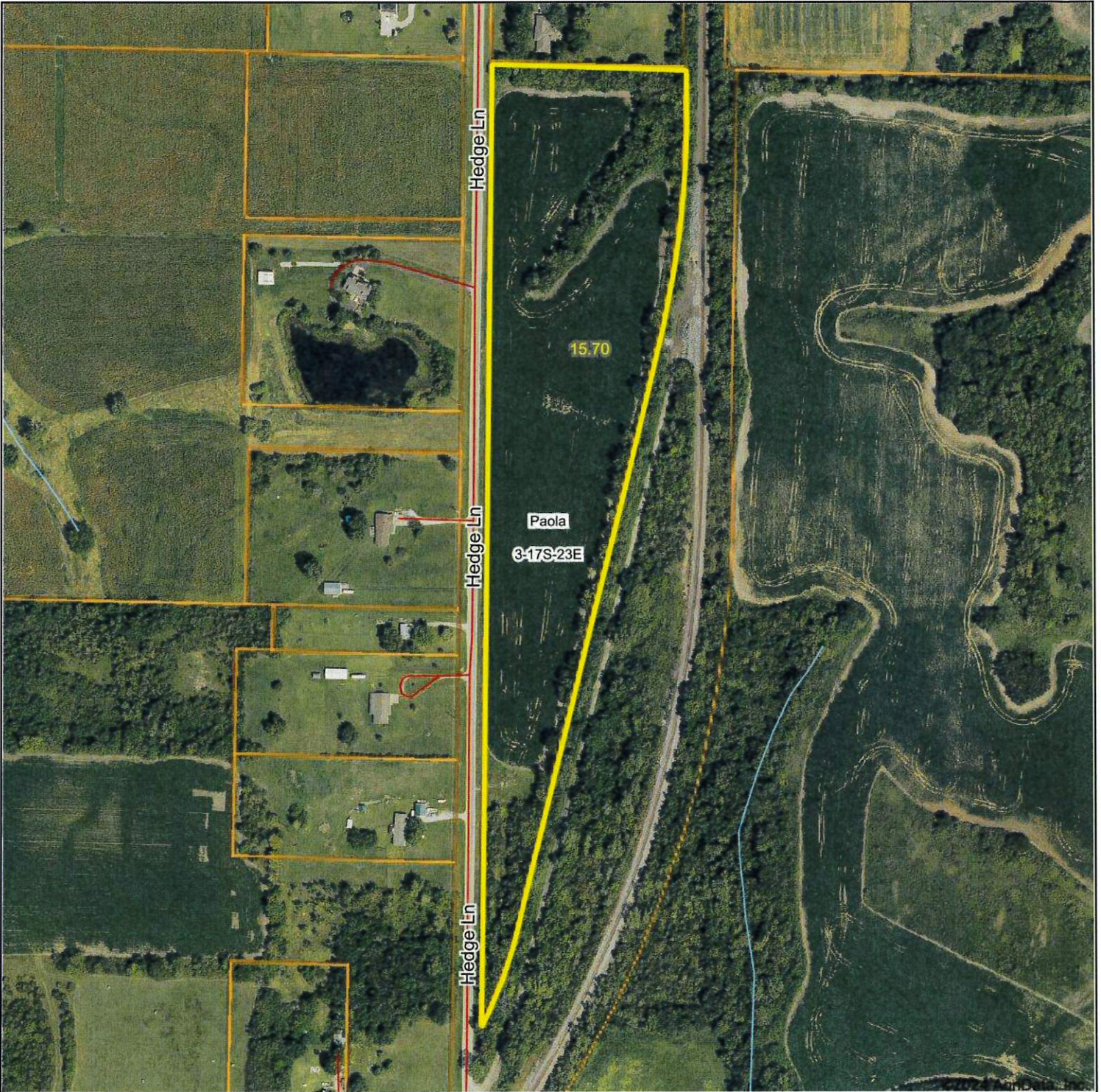


Aerial Map



Boundary Center: 38° 35' 48.24, -94° 51' 12.86

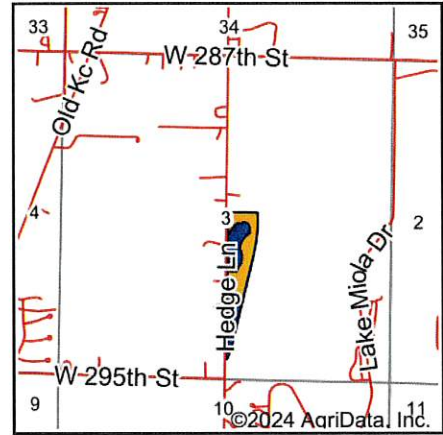
0ft 382ft 763ft

3-17S-23E
Miami County
Kansas

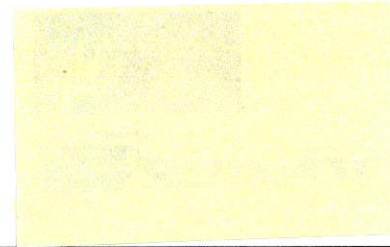


10/31/2024

Soils Map



State: **Kansas**
 County: **Miami**
 Location: **3-17S-23E**
 Township: **Paola**
 Acres: **15.7**
 Date: **10/31/2024**



Soils data provided by USDA and NRCS.

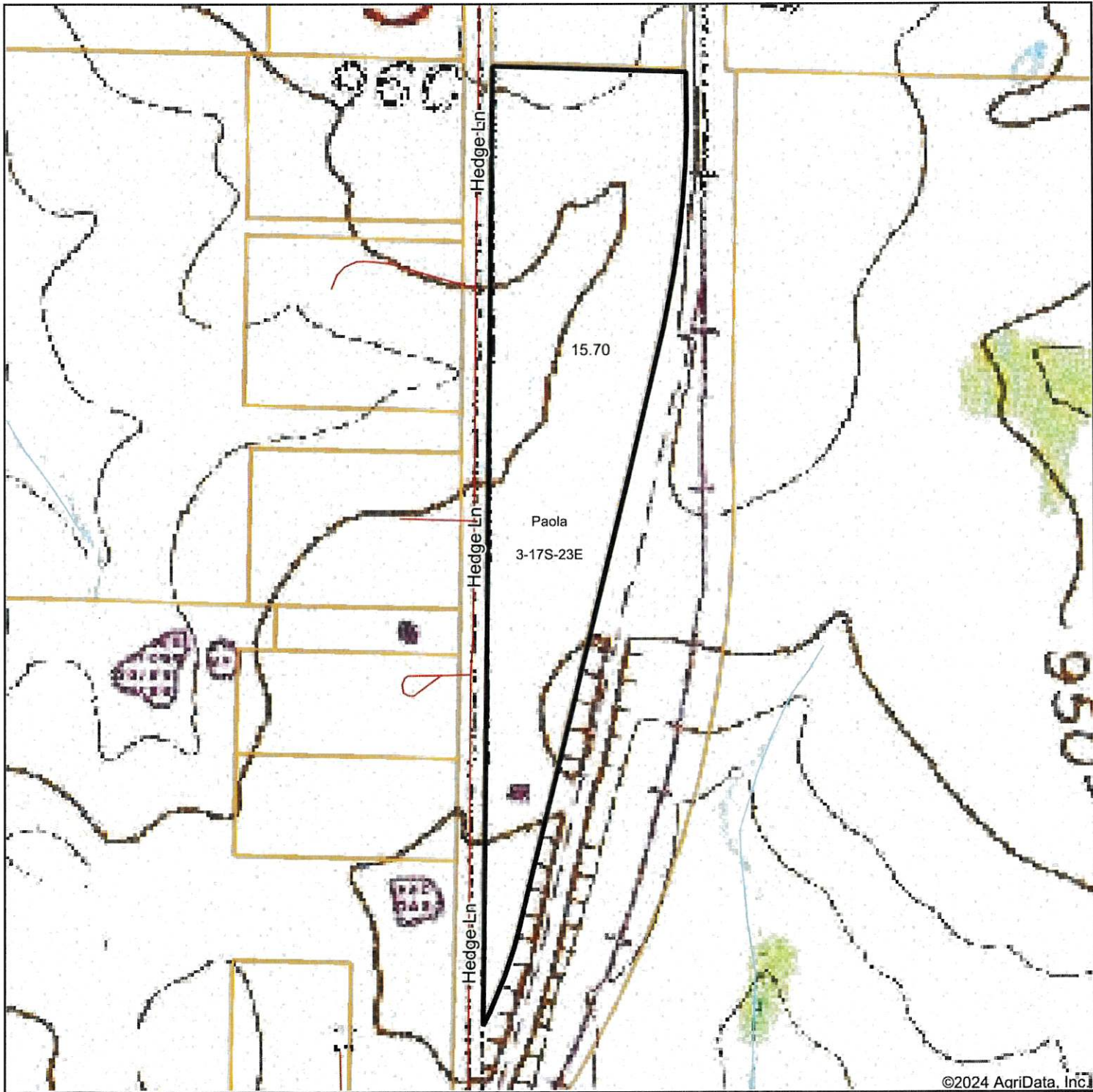
©2024 AqriData, Inc.

Area Symbol: KS121, Soil Area Version: 24							
Code	Soil Description	Acres	Percent of field	Non-Irr Class Legend	Non-Irr Class *c	Range Production (lbs/acre/yr)	*n NCCPI Soybeans
8775	Kenoma silt loam, 1 to 3 percent slopes	10.03	63.9%		IIIe	3888	59
8911	Summit silty clay loam, 1 to 3 percent slopes	5.67	36.1%		Ile	4828	60
Weighted Average					2.64	4227.5	*n 59.4

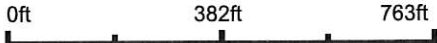
*n: The aggregation method is "Weighted Average using all components"

*c: Using Capabilities Class Dominant Condition Aggregation Method

Topography Map



Map Center: 38° 35' 48.24, -94° 51' 13.88



3-17S-23E
Miami County
Kansas



10/31/2024