

CONSULTING | REALTY | DEVELOPMENT

TILLER LAND

- COMPANY -



FARMLAND COLLECTION

PRESENTING

THE CRAFT-MILES COMBO

POINSETT COUNTY, ARKANSAS

TILLER LAND

THE CRAFT-MILES COMBO

- Poinsett County, Arkansas -

FARMLAND COLLECTION

The Craft-Miles Combo is a highly productive row crop farm in the heart of rice country. The Miles tract is precision leveled with two new wells and good water. Crop rotation options of corn, soybean and rice. The Craft tract is a combination of precision leveled and line leveled fields with two large wells and good water. It also presents corn, soybean and rice rotation options. Both tracts have successful tenants and are highly productive soils.

TOTAL ACREAGE: +/- 573

FARMABLE ACREAGE: +/- 549

ASKING PRICE: \$4,600,000

OIL, GAS & MINERAL: All rights owned will transfer

● TRACT 1: THE CRAFT FARM

- LOCATION: WEINER, AR
- TOTAL ACRES: 379
- FARMABLE ACRES: 365
- Leveled
- 2 Turbine wells

● TRACT 2: THE MILES FARM

- LOCATION: WALDENBURG, AR
- TOTAL ACRES: 194
- FARMABLE ACRES: 184
- Leveled
- 2 Turbine wells

CONSULTING | REALTY | DEVELOPMENT

TILLER LAND

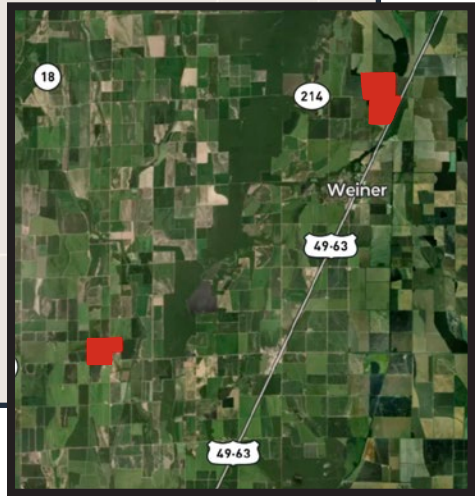
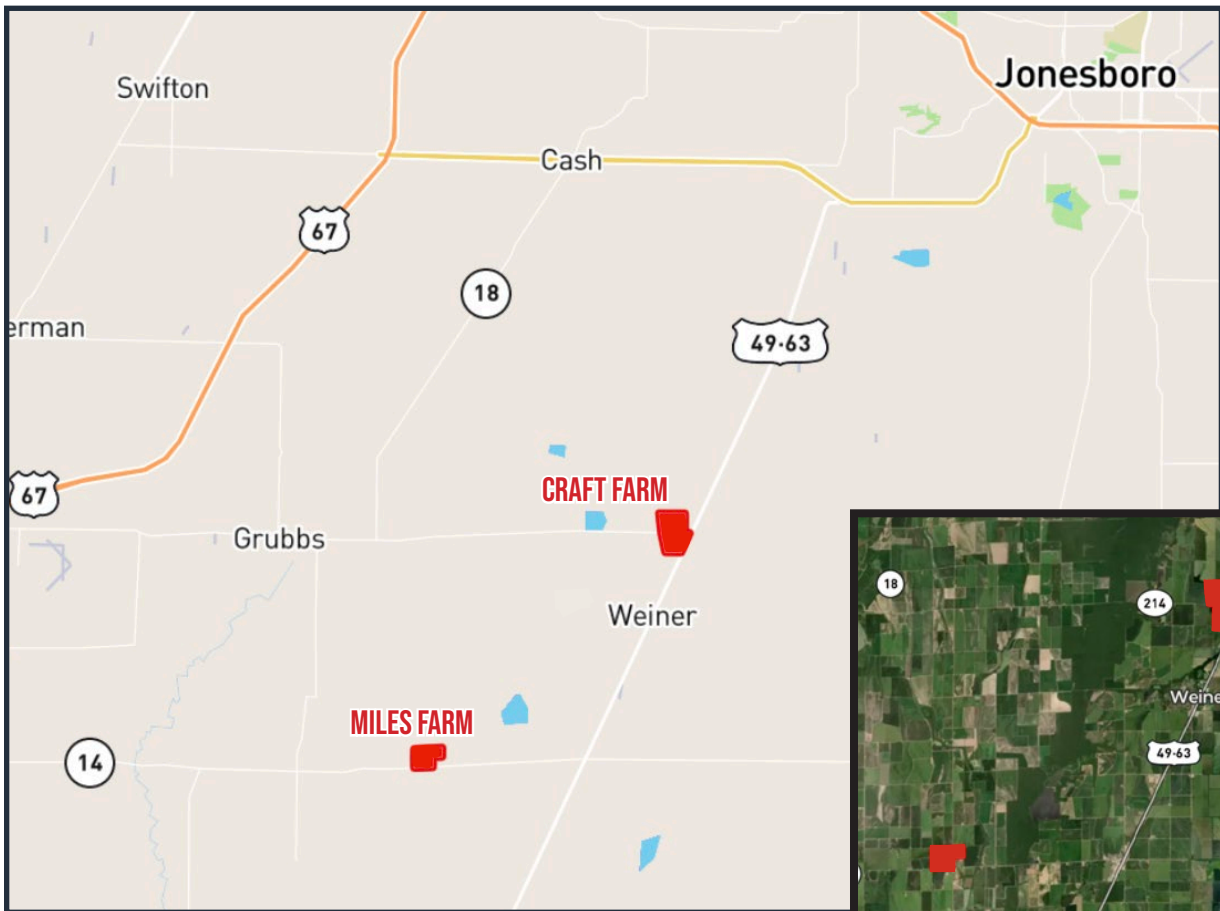
2713 PAULA DRIVE | JONESBORO, AR 72404 | TILLERLAND.COM | 870-336-2654

TILLER LAND

THE CRAFT-MILES COMBO

- Poinsett County, Arkansas -

REGIONAL & AERIAL MAPS



- 10 miles from the Craft Farm to the Miles Farm

CONSULTING | REALTY | DEVELOPMENT

TILLER LAND

TILLERLAND

THE CRAFT-MILES COMBO

- Poinsett County, Arkansas -

TRACT 1: THE CRAFT FARM



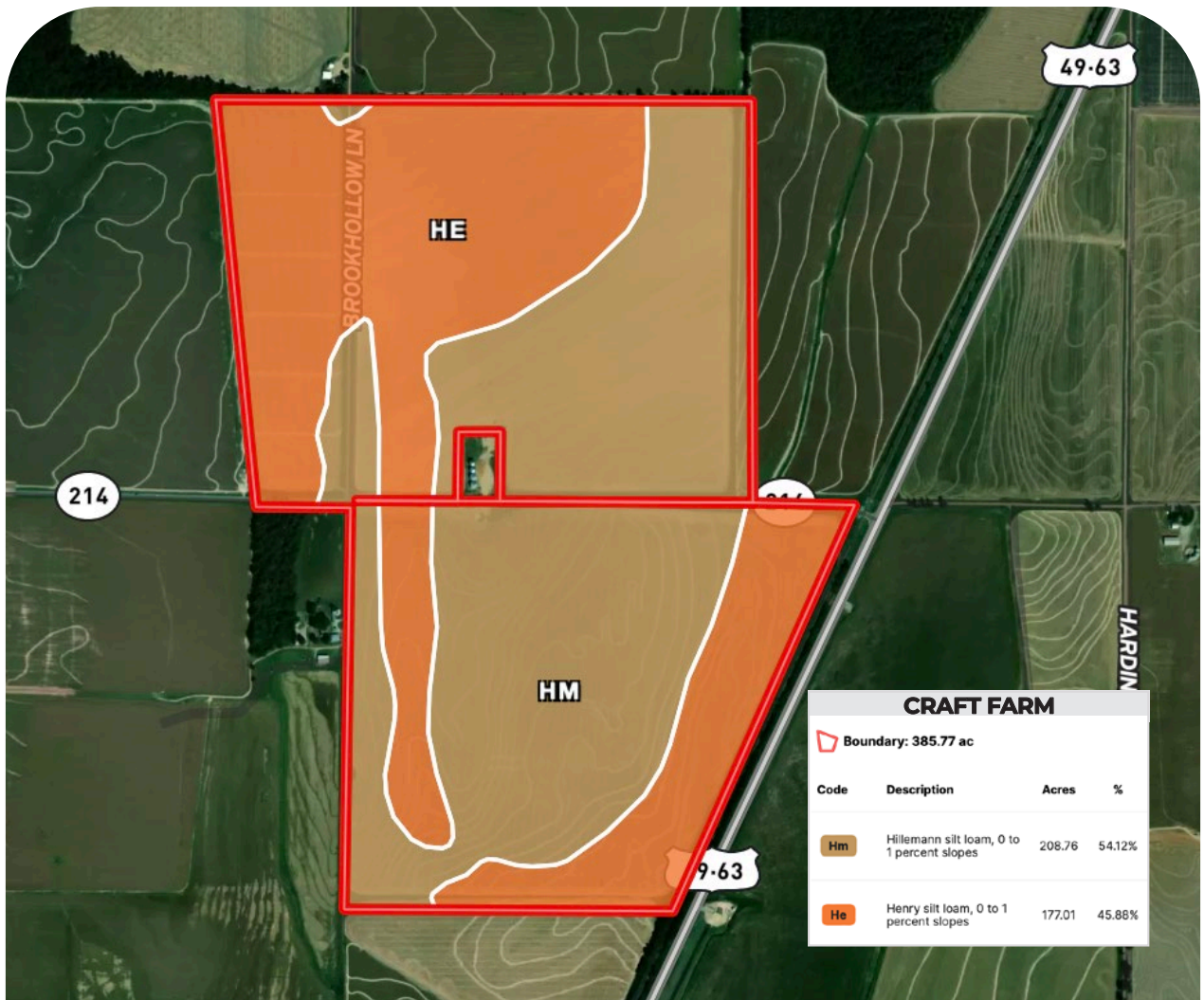
TILLER LAND

THE CRAFT-MILES COMBO

- Poinsett County, Arkansas -

SOIL MAP

TRACT 1: CRAFT FARM



CONSULTING | REALTY | DEVELOPMENT

TILLER LAND

TILLERLAND

THE CRAFT-MILES COMBO

- Poinsett County, Arkansas -

TRACT 2: THE MILES FARM



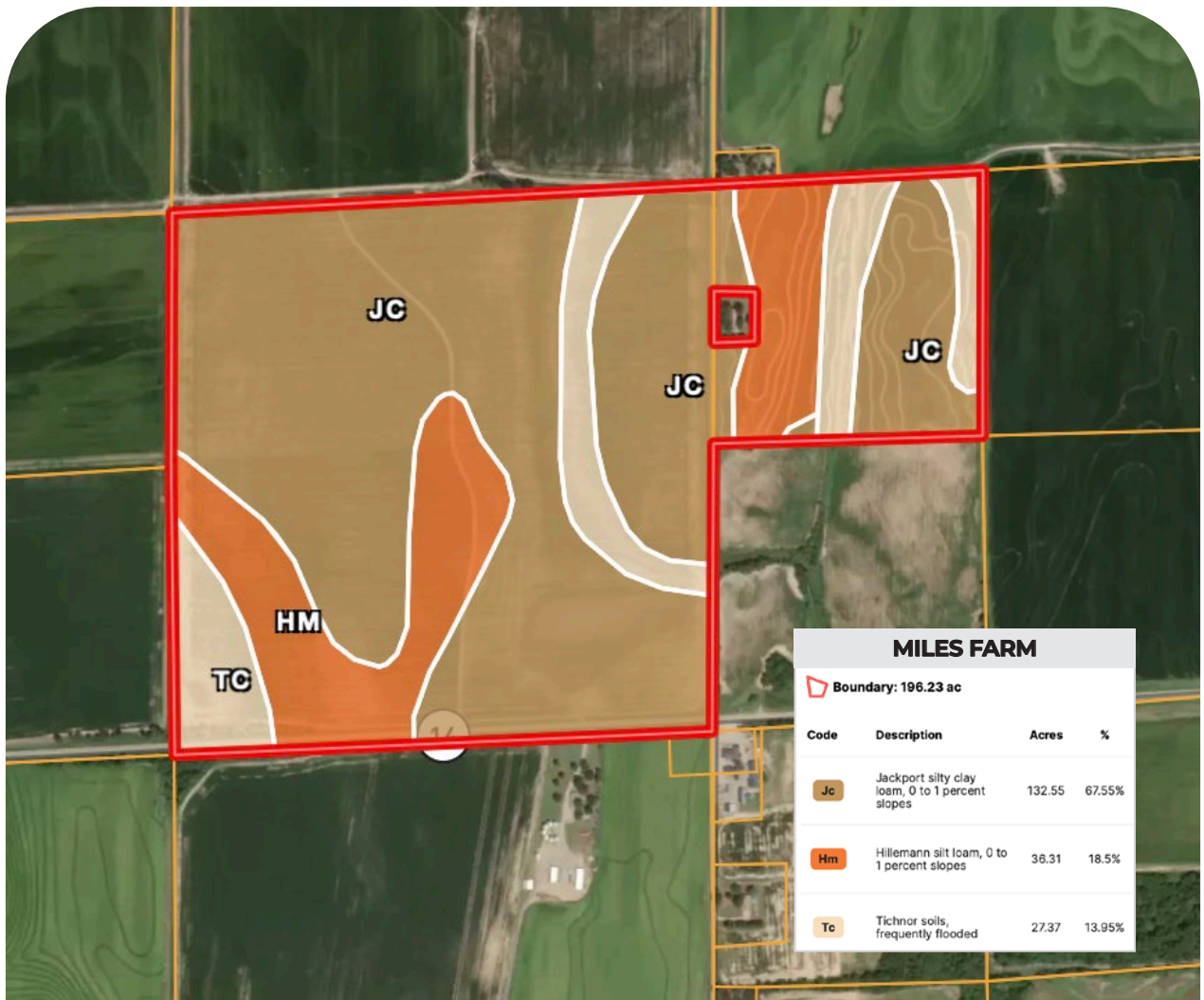
TILLER LAND

THE CRAFT-MILES COMBO

- Poinsett County, Arkansas -

SOIL MAP

TRACT 2: MILES FARM



CONSULTING | REALTY | DEVELOPMENT

TILLER LAND

CONSULTING | REALTY | DEVELOPMENT

TILLER LAND

- COMPANY -

Thanks for your interest in the
THE CRAFT-MILES COMBO

For questions or a property tour,
please contact:

BRIAN MACK
LAND AGENT

870.919.5945 | Brian@Tillerland.com

KELLY PHIPPS
PRINCIPAL BROKER
870.351.2097
KELLY@TILLERLAND.COM

BRIAN MACK
LAND AGENT
870.919.5945
BRIAN@TILLERLAND.COM

JACK CHILDERS
LAND AGENT
870.243.1959
JACK@TILLERLAND.COM

TANER WOLVERTON
LAND AGENT
870.761.4700
TANER@TILLERLAND.COM

TILLER LAND COMPANY

2713 PAULA DRIVE SUITE B | JONESBORO, AR 72404 | 870-336-2654