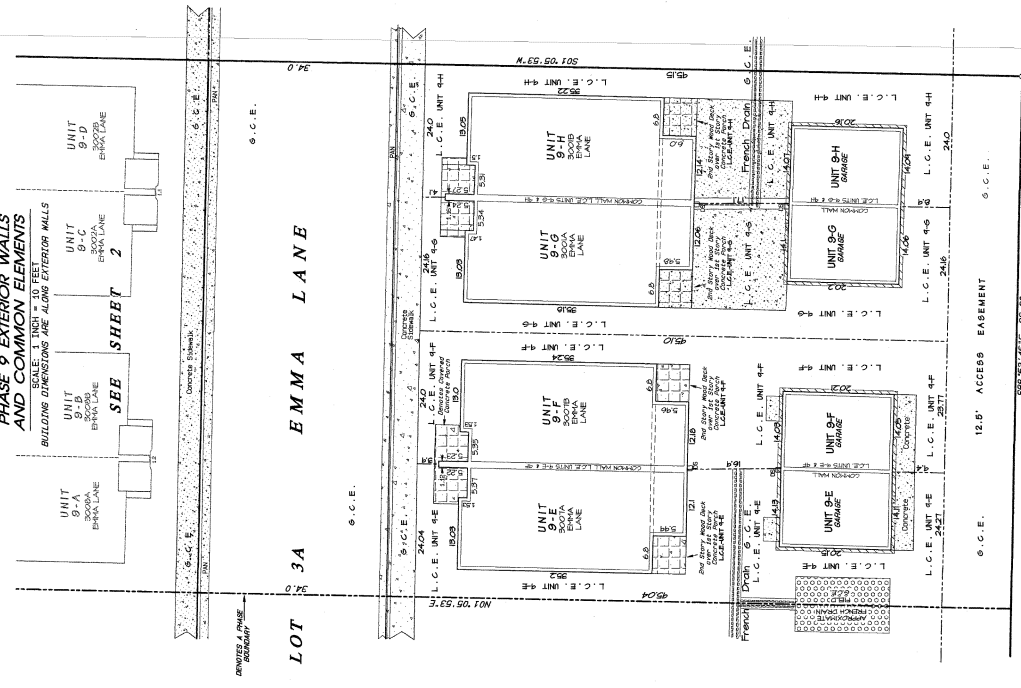


ANGELVIEW CONDOMINIUMS PHASE 9

LOCATED IN
 LOT 3A, ANGELVIEW MINOR SUBDIVISION IN THE CITY OF SALIDA
 CHAFFEE COUNTY, COLORADO
SHEET 3 OF 3

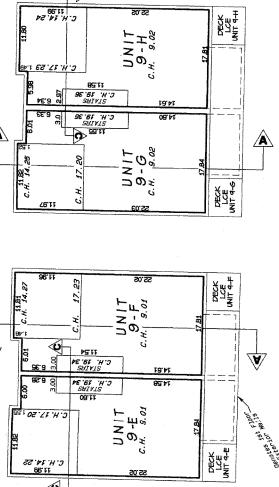
**PHASE 9 EXTERIOR WALLS
 AND COMMON ELEMENTS**

SCALE: 1/4" = 10 FEET
 BUILDING DIMENSIONS ARE ALONG EXTERIOR WALLS



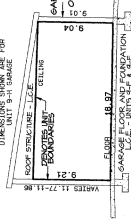
PHASE 9 SECOND FLOOR

SCALE: 1/4" = 10 FEET



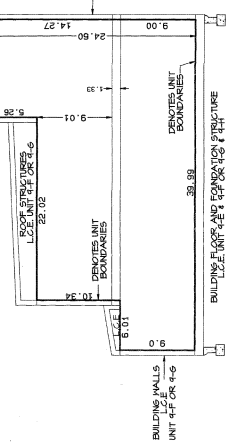
SECTION D-D

TYPICAL SECTION
 NOT TO SCALE
 DIMENSIONS SHOWN ARE FOR
 EXTERIOR FINISHES



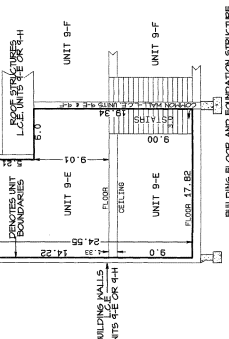
SECTION A-A

NOT TO SCALE
 DIMENSIONS ARE FOR UNIT 9-F



SECTION C-C

NOT TO SCALE
 DIMENSIONS ARE FOR UNIT 9-E



LEGEND:

- S-C-E SHOWS A GENERAL COMMON ELEMENT
- L-C-E SHOWS A LIMITED COMMON ELEMENT
- E-G-E SHOWS AN EXCLUSIVE GARAGE ELEMENT
- C-E SHOWS A COMMON CURB AND GUTTER
- D-S-H SHOWS A DOWNSPOUT INTO GROUND
- ⊞ SHOWS A DOWNSPOUT INTO GROUND

471769
 1/10/2019 9:55 AM
 1/10/2019 9:55 AM

Lot A Subdivided
 Chaffee County Clerk

CONDOMINIUM OWNERSHIP NOTES:
 1. SHIP BY INDIVIDUAL OR ENTITIES OF WHICH THE DIMENSIONS OF THE UNITS IN ANGELVIEW CONDOMINIUMS PHASE 9 ARE SHOWN
 BY THE INNER DECORATED OR FINISHED SURFACES OF ALL WALLS, FLOORS, CEILING, HIGH CONDITUTE SUCH BOUNDARIES,
 DOORS AND WINDOWS AND TO ALL SPACE AND INTERIOR NON-SUPPORTING WALLS CONTAINED THEREIN
 2. OWNERS OF UNITS IN ANGELVIEW CONDOMINIUMS PHASE 9 SHALL BE DEEMED TO OWN THE INTERIOR WALLS OF THE GARAGES
 3. HALLWAY THROUGH INTERIOR WALLS AND FLOORS SAID AREA AND VOLUMES DUE TO THE DIFFICULTIES
 IN MEASURING THROUGH INTERIOR WALLS AND FLOORS SAID AREA AND VOLUMES SHOULD BE CONSIDERED TO BE APPROX-
 IMA TED AND NOT TO BE A BASIS FOR CLAIMS
 4. OWNERSHIP OF EACH CONDOMINIUM UNIT SHALL BE SUBJECT TO THE CONDOMINIUM DECLARATION OF ANGELVIEW CONDO-
 MINIUMS, CITY OF SALIDA, CHAFFEE COUNTY, COLORADO
 5. DECLARATION HAS BEEN FILED WITH THE CLERK OF THE ANGELVIEW CONDOMINIUMS ASSOCIATION, INC.

UNIT AREA/VOLUME TABLE

UNIT	LIVING AREA	GARAGE	NET AREA / VOLUME	NET AREA / VOLUME
9-A	1200.00 SQ. FT.	2222.00 SQ. FT.	1000.00 SQ. FT.	1000.00 SQ. FT.
9-B	1200.00 SQ. FT.	2222.00 SQ. FT.	1000.00 SQ. FT.	1000.00 SQ. FT.
9-C	1200.00 SQ. FT.	2222.00 SQ. FT.	1000.00 SQ. FT.	1000.00 SQ. FT.
9-D	1200.00 SQ. FT.	2222.00 SQ. FT.	1000.00 SQ. FT.	1000.00 SQ. FT.
9-E	1200.00 SQ. FT.	2222.00 SQ. FT.	1000.00 SQ. FT.	1000.00 SQ. FT.
9-F	1200.00 SQ. FT.	2222.00 SQ. FT.	1000.00 SQ. FT.	1000.00 SQ. FT.
9-G	1200.00 SQ. FT.	2222.00 SQ. FT.	1000.00 SQ. FT.	1000.00 SQ. FT.
9-H	1200.00 SQ. FT.	2222.00 SQ. FT.	1000.00 SQ. FT.	1000.00 SQ. FT.

ANGELVIEW CONDOMINIUMS PHASE 9
 HENDERSON LAND SURVEYING CO., INC.
 2835 STREET
 SALIDA, COLORADO 80854
 PHONE: 719.335.8888
 FAX: 719.335.8888
 www.hendersonland.com
 LICENSE NUMBER: 72290
 LICENSE EXPIRES: 12/31/2024
 6/19/21
 SHEET 3 OF 3

ANGELVIEW CONDOMINIUMS PHASE 9
 HENDERSON LAND SURVEYING CO., INC.
 2835 STREET
 SALIDA, COLORADO 80854
 PHONE: 719.335.8888
 FAX: 719.335.8888
 www.hendersonland.com
 LICENSE NUMBER: 72290
 LICENSE EXPIRES: 12/31/2024
 6/19/21
 SHEET 3 OF 3