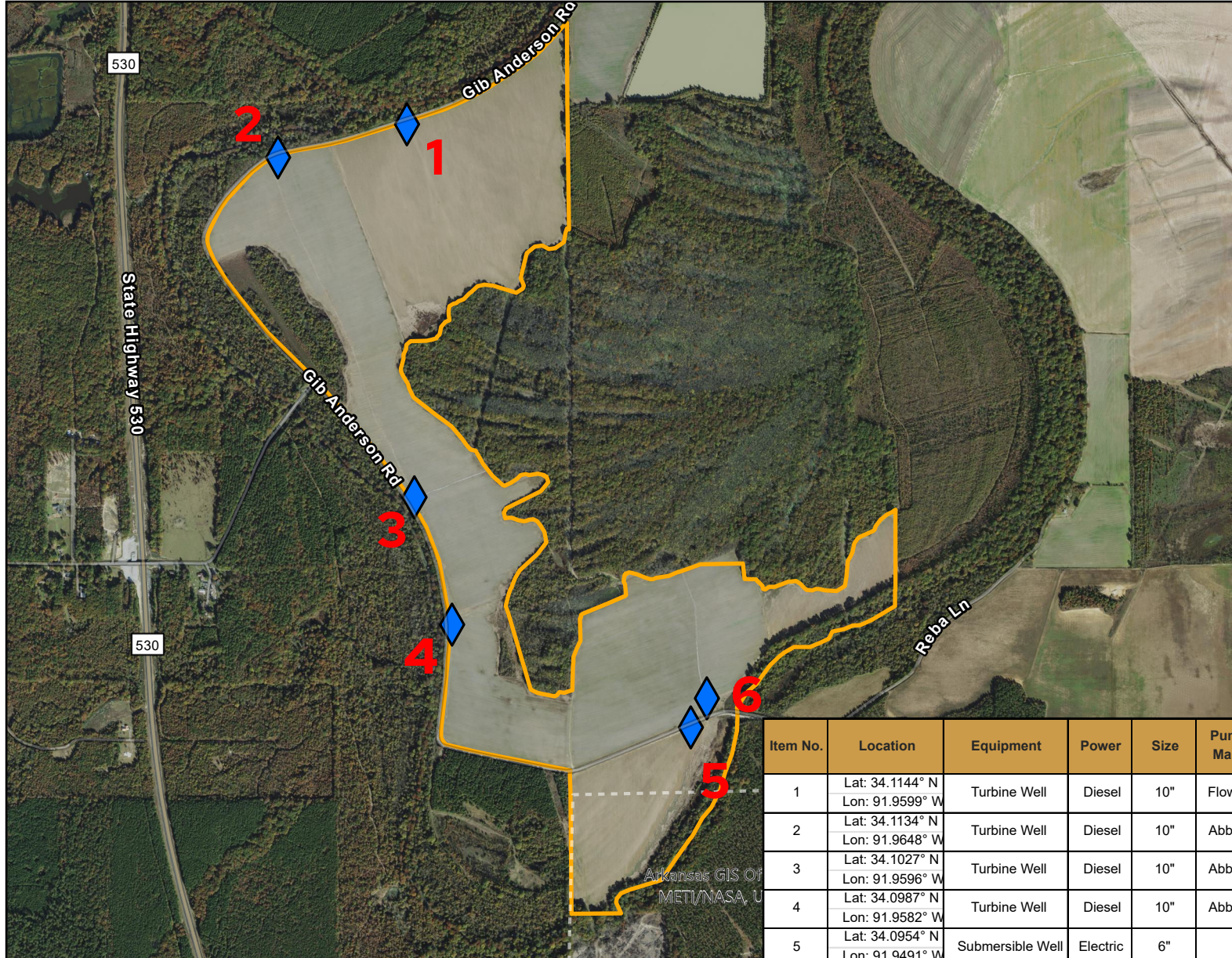


Irrigation - Wells and Risers

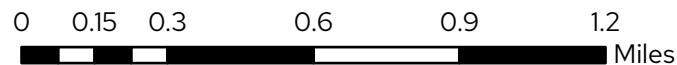
Horseshoe
Lincoln County, AR and Jefferson County, AR



◆ Well
□ Farm

Item No.	Location	Equipment	Power	Size	Pump Make	Pump Serial #	Gear Drive Make	Gear Drive Model	Gear Drive Serial #	Gear Drive HP
1	Lat: 34.1144° N Lon: 91.9599° W	Turbine Well	Diesel	10"	Floway		Amarillo	S40AB	490776	40
2	Lat: 34.1134° N Lon: 91.9648° W	Turbine Well	Diesel	10"	Abbott	2007030	Randolph	M 40	R060802	40
3	Lat: 34.1027° N Lon: 91.9596° W	Turbine Well	Diesel	10"	Abbott	8707	Green Machine	R30387		40
4	Lat: 34.0987° N Lon: 91.9582° W	Turbine Well	Diesel	10"	Abbott	2007031	Randolph	M 40	R060803	40
5	Lat: 34.0954° N Lon: 91.9491° W	Submersible Well	Electric	6"						
6	Lat: 34.0964° N Lon: 91.9485° W	Submersible Well	Electric	6"						

© 2024, Scythe & Spade Co.



N



Although the information contained herein is considered to be accurate, Scythe & Spade is making no representation or warranty to that affect, either express or implied. The information contained herein is subject to verification and no liability for errors and omissions is assumed. All acreages, dimensions, measurements, computations, and locations are approximate. This map is NOT a survey and is intended for reference use only.