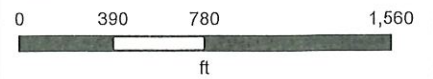


## Letter Portrait

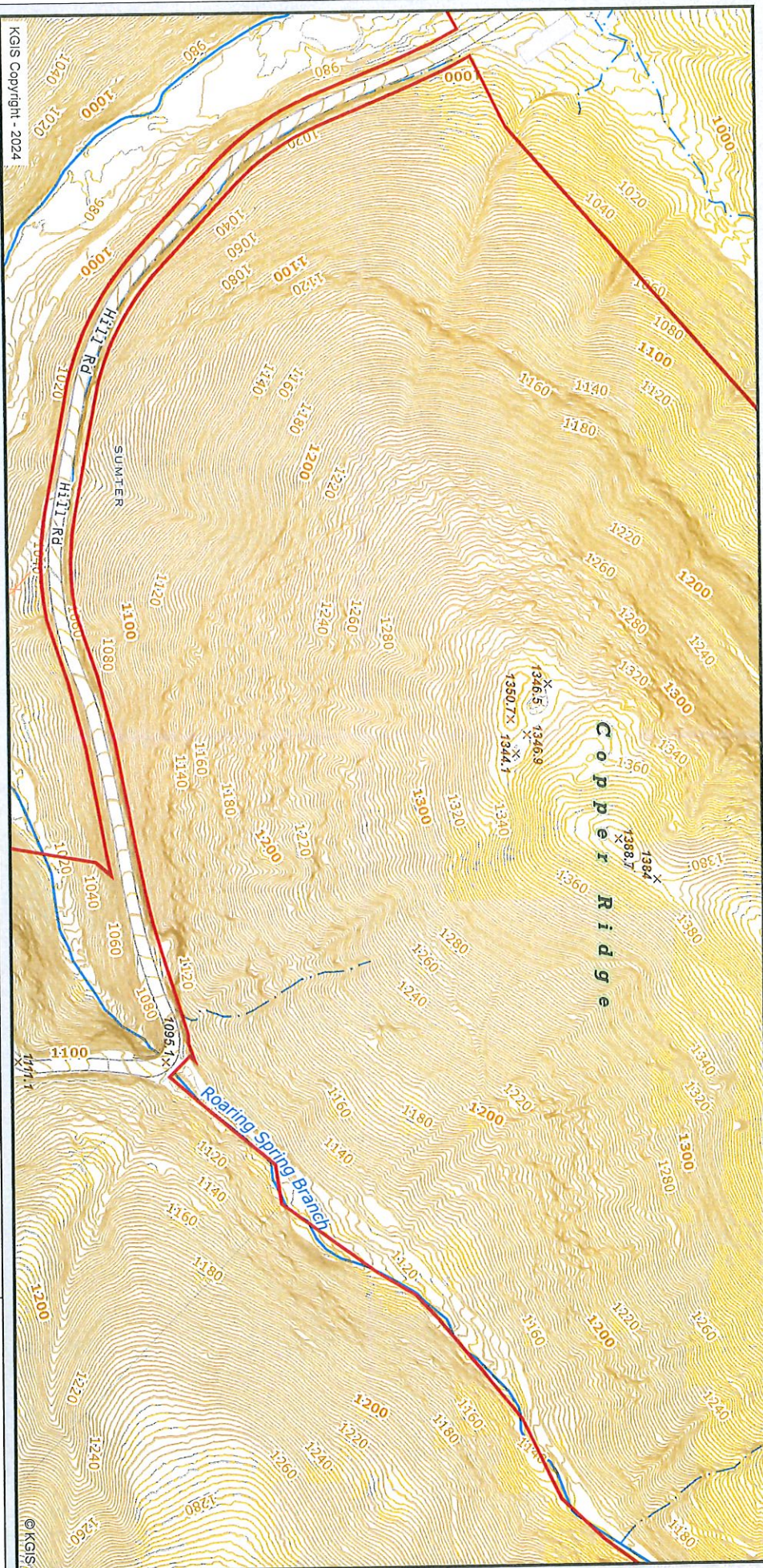
Knoxville - Knox County - KUB Geographic Information System



Printed: 10/21/2024 at 9:18:05 AM



KGIS makes no representation or warranty as to the accuracy of his map and its information nor to its fitness for use. Any user of this map product accepts the same AS IS ,WITH ALL FAULTS, and assumes all responsibility for the use thereof, and futher covenants and agrees to hold KGIS harmless from any and all damage, loss, or liability arising from any use of this map product.



150 + or - Acres Hill Rd- Topo

Knoxville - Knox County - KUB Geographic Information System

KGIS makes no representation or warranty as to the accuracy of this map and its information not to its fitness for use. Any user of this map product accepts the same AS IS, WITH ALL FAULTS, and assumes all responsibility for the use thereof, and further covenants and agrees to hold KGIS harmless from any and all damage, loss, or liability arising from any use of this map product.

Printed: 11/5/2024 at 12:24:16 PM

0 100 200 400  
ft

© KGIS



KGIS Copyright - 2024

150 + or - Acres Hill Rd- Topo

Knoxville - Knox County - KUB Geographic Information System



Printed: 11/5/2024 at 12:22:57 PM

KGIS makes no representation or warranty as to the accuracy of this map and its information nor to its fitness for use. Any user of this map product accepts the same AS IS, WITH ALL FAULTS, and assumes all responsibility for the use thereof, and further covenants and agrees to hold KGIS harmless from any and all damage, loss, or liability arising from any use of this map product.



KGIS Copyright - 2024

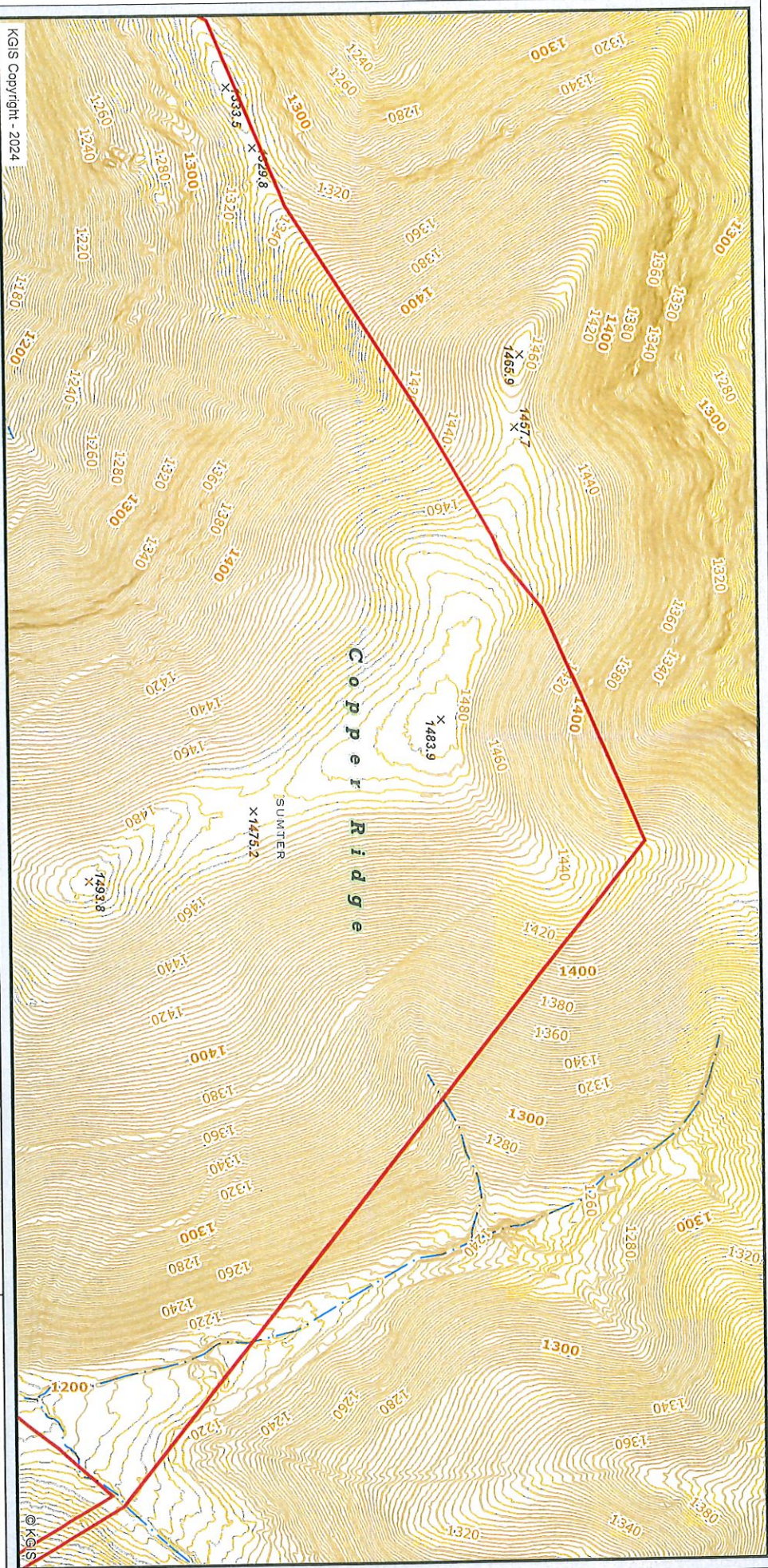
150 + or - Acres Hill Rd- Topo

Knoxville - Knox County - KUB Geographic Information System



Printed: 11/5/2024 at 12:21:56 PM

KGIS makes no representation or warranty as to the accuracy of this map and its information nor to its fitness for use. Any user of this map product accepts the same AS IS WITH ALL FAULTS, and assumes all responsibility for the use thereof, and further covenants and agrees to hold KGIS harmless from any and all damage, loss, or liability arising from any use of this map product.



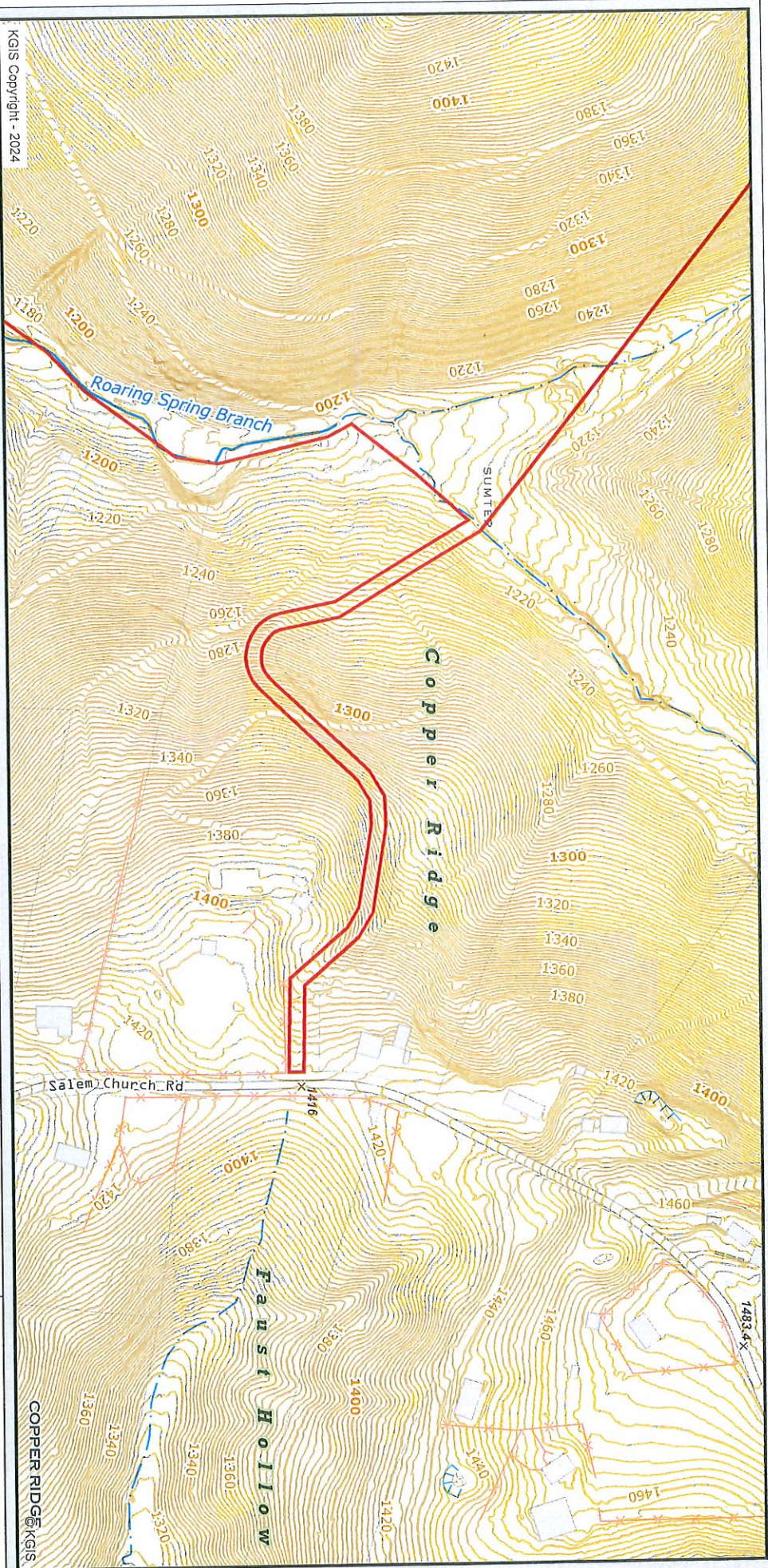
KGIS Copyright - 2024

150 + or - Acres Hill Rd - Topo

Knoxville - Knox County - KUB Geographic Information System



KGIS makes no representation or warranty as to the accuracy of this map and its information nor to its fitness for use. Any user of this map product accepts the same AS IS, WITH ALL FAULTS, and assumes all responsibility for the use thereof, and further covenants and agrees to hold KGIS harmless from any and all damage, loss, or liability arising from any use of this map product.



KGIS Copyright - 2024

150 + or - Acres Hill Rd- Topo

**Knoxville - Knox County - KUB Geographic Information System**

KGIS makes no representation or warranty as to the accuracy of this map and its information nor to its fitness for use. Any user of this map product accepts the same AS IS, WITH ALL FAULTS, and assumes all responsibility for the use thereof, and further covenants and agrees to hold KGIS harmless from any and all damage, loss, or liability arising from any use of this map product.

Printed: 11/5/2024 at 12:25:36 PM




0 100 200 400  
ft

COPPER RIDGE KGIS