

FOR SALE

±4.5 Acres with Excellent Visibility off of Greenville Highway



2906 GREENVILLE HIGHWAY | EASLEY, SC 29640

PROPERTY AND LOCATION HIGHLIGHTS

- A portion of Pickens County Tax Map # 5008-11-56-7923
- New development nearby
- ±866 Linear Feet of Double Road Frontage on Greenville Highway & Gillespie Drive
- Flat/Level Topography with Excellent Visibility & Location
- Zoned for: West End Elementary | Gettys Middle School
Easley High School
- 2021 SCDOT Traffic Count – 5,900 VPD
- Best Use: Retail | Commercial
- Utilities – Power, Water & Sewer Available
- Acreage and Utilities to be Verified by Buyer or Buyer's Agent

OFFERING SUMMARY

Total Lot Size:	±4.5 Acres
Total Sale Price:	\$499,000



LOGAN MITCHELL

Associate
843.801.5309
lmitchell@reedypg.com

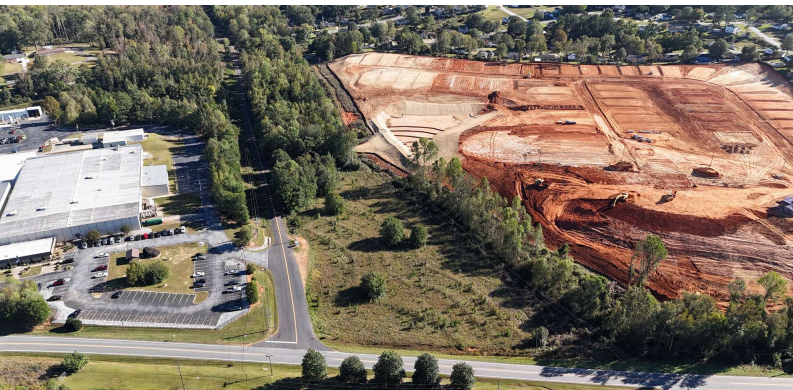
CHASE STYLES

Associate
864.365.5440
cstyles@reedypg.com

REEDY PROPERTY GROUP

301 N Main Street, Suite 501
Greenville, SC 29601
864.568.5102
reedypropertygroup.com

2906 Greenville Highway Easley, SC 29640

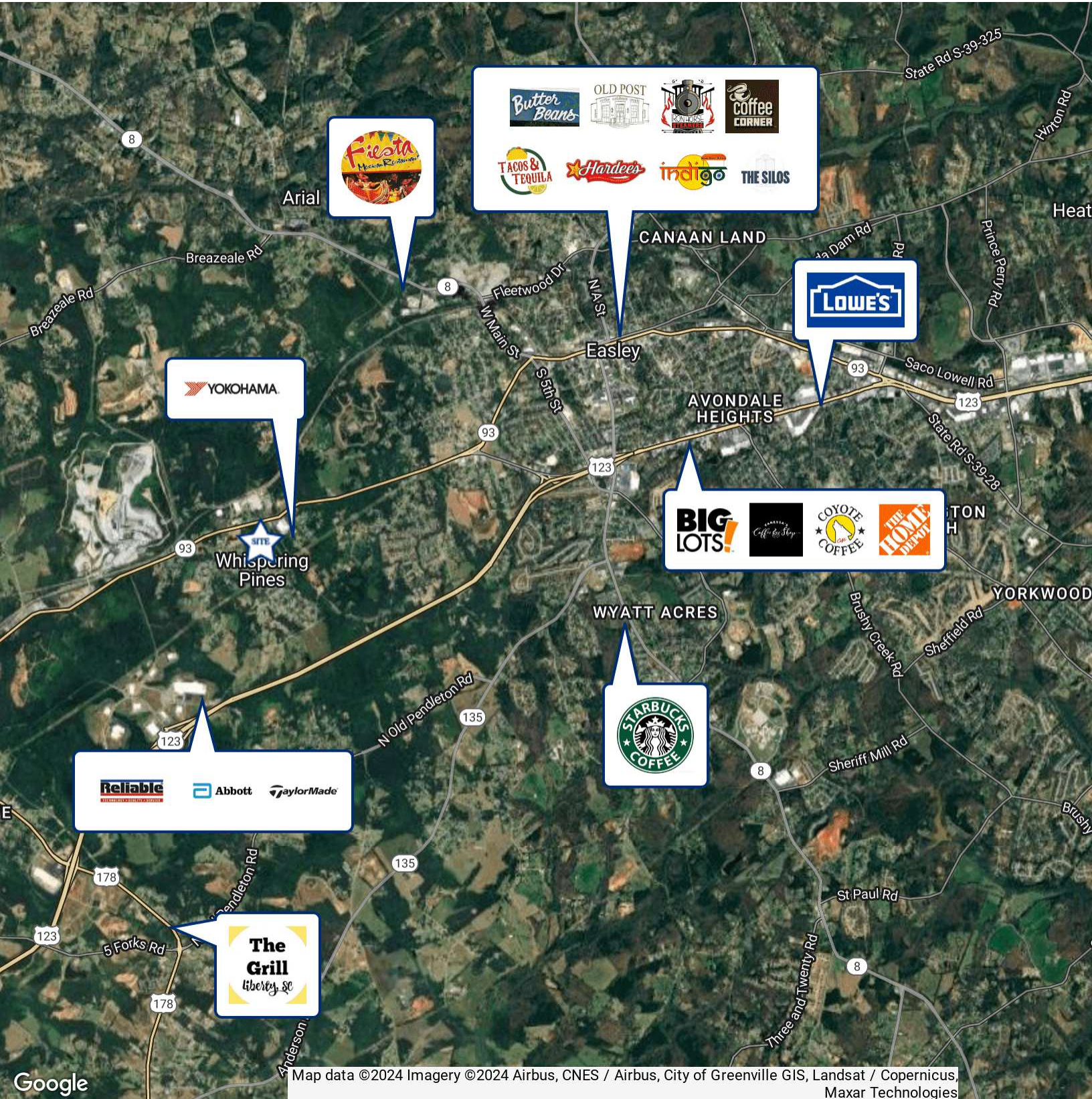


LOGAN MITCHELL
Associate
843.801.5309
lmitche@reedypg.com

CHASE STYLES
Associate
864.365.5440
cstyles@reedypg.com

REEDY PROPERTY GROUP
301 N Main Street, Suite 501
Greenville, SC 29601
864.568.5102
reedypg.com

2906 Greenville Highway Easley, SC 29640



Google

Map data ©2024 Imagery ©2024 Airbus, CNES / Airbus, City of Greenville GIS, Landsat / Copernicus, Maxar Technologies

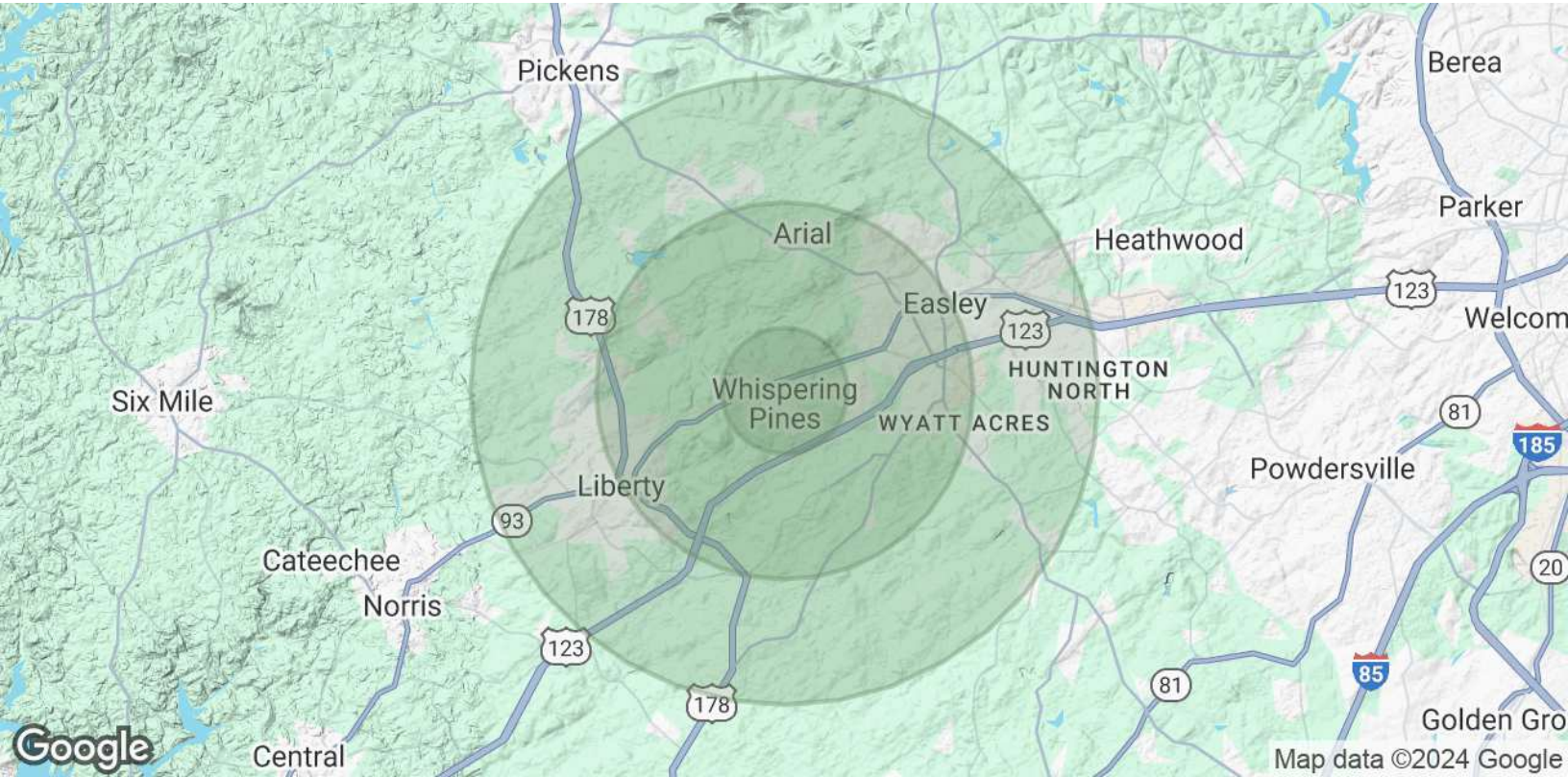
LOGAN MITCHELL
Associate
843.801.5309
lmitchell@reedypg.com

CHASE STYLES
Associate
864.365.5440
cstyles@reedypg.com

REEDY PROPERTY GROUP
301 N Main Street, Suite 501
Greenville, SC 29601
864.568.5102
reedypg.com

2906 Greenville Highway

Easley, SC 29640



POPULATION	1 MILE	3 MILES	5 MILES
Total Population	1,861	16,043	40,651
Average Age	34.3	41.6	41.5
Average Age (Male)	28.4	39.1	39.3
Average Age (Female)	36.3	42.2	42.7
HOUSEHOLDS & INCOME	1 MILE	3 MILES	5 MILES
Total Households	656	6,979	17,813
# of Persons per HH	2.8	2.3	2.3
Average HH Income	\$60,469	\$56,388	\$69,792
Average House Value	\$121,909	\$133,776	\$172,506

2020 American Community Survey (ACS)

LOGAN MITCHELL

Associate
843.801.5309
lmitchell@reedypg.com

CHASE STYLES

Associate
864.365.5440
cstyles@reedypg.com

REEDY PROPERTY GROUP

301 N Main Street, Suite 501
Greenville, SC 29601
864.568.5102
reedypropertygroup.com