



TX Real Estate Group Land Division

Residential | Farm & Ranch | Commercial



510± Acres - Quay County

TUCUMCARI, NM

\$800,000 (\$1568/AC)

We are pleased to present the exclusive listing of this 510± acre farm located in Quay County, New Mexico. This well maintained farm is primed for new ownership, and would be an excellent addition to any portfolio or farming operation.

510± Acres Quay County | Tucumcari, NM

Location: Situated between Logan and Tucumcari, the farm is located just off of HWY 54 (on the south side of the highway), and is bordered by Quay Rd. 67 on its northern border.

Land: This farm is comprised of a number of various soils. Canez fine sandy loam, Redona loam are both prevalent throughout, as well as many other varieties. For a full soils report breakdown, please contact the listing agent.

Water: The land features roughly 393± acres of water rights per the seller. Canal access for irrigation is present, with a new pump having been installed in 2023. The ditching and underground lines on the farm were also established in 2023. Per the seller, the farm has a combined capacity of around 2,000± GPM via two pumps (both 15 HP) and the canal system.

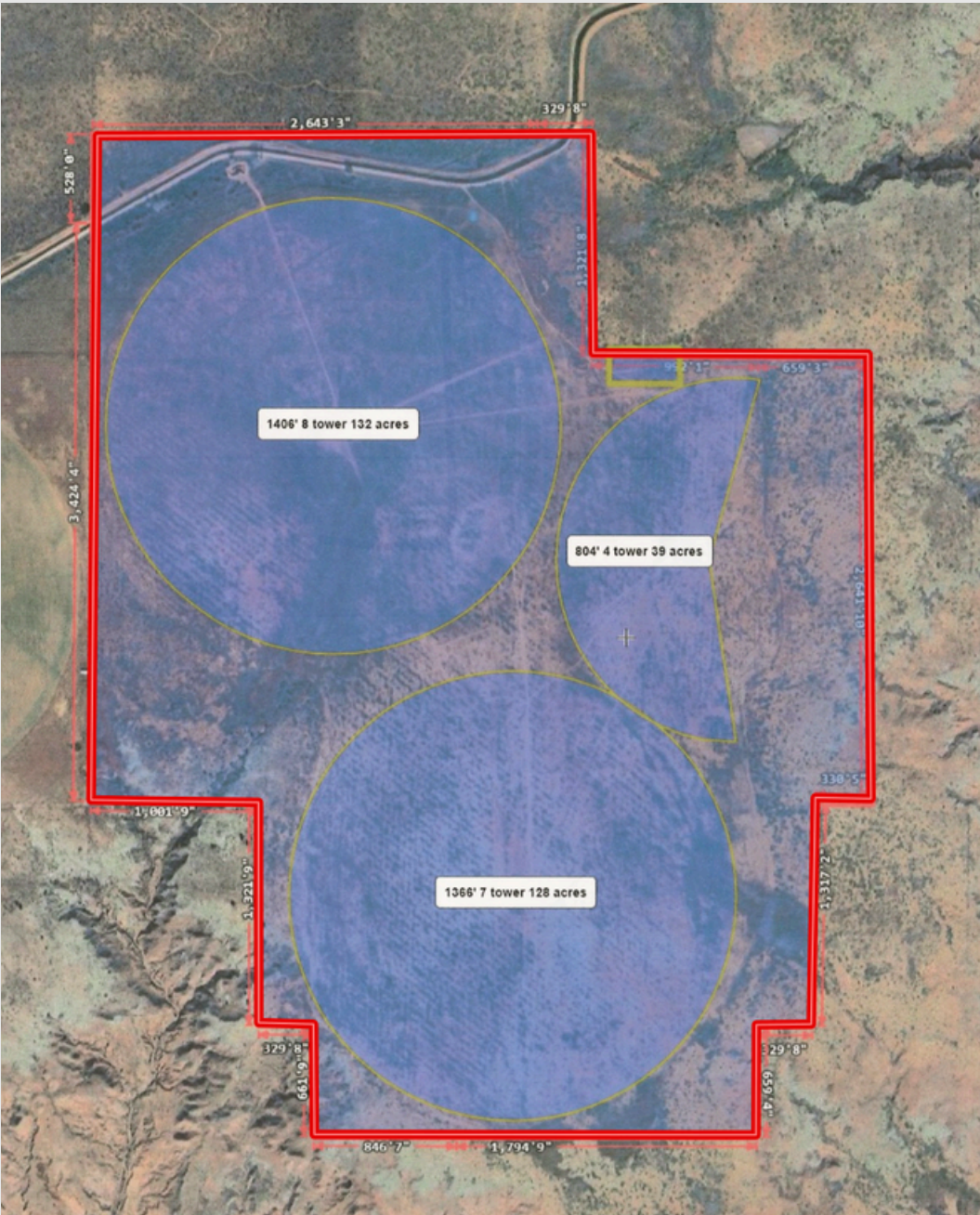
Improvements: In addition to the improvements listed above, the farm features three pivots. All are 2000's model Zimmatics. The pivots cover a range of acres, with one being an 8 tower, one a 7 tower, and the last being a 4 tower system.

Minerals: The sellers do not have any mineral ownership in the property.

Price: This farm is being offered for sale for \$800,000, or roughly \$1,568/acre.

Notes: Buyer is encouraged to conduct their own due diligence prior to purchasing. All info listed above is according to the best knowledge of the seller and other relevant sources. The TX Real Estate Group will not be held liable for any information found to be inaccurate during or after closing the buying process. All buyers agents must be identified on first contact and accompany buyers on all showings in order to be given full participation fee. If these requirements are not met, participation fee will be at the sole discretion of the TX Real Estate Group.

510± Acres Quay County | Tucumcari, NM



Presented By:
Jude Soileau, Listing Agent

806-801-2030
jude@txrealestategroup.com
4223 85th Street, Lubbock, TX 79424