

SHELL ROAD

SANTA ROSA COUNTY, FLORIDA



SOUTHEASTERN SURVEYING
AND MAPPING CORPORATION

DATE	
BY	
SCALE	
PROJECT	
NO. SHEETS	1 OF 1
NOT MADE WITHOUT SHEETS 1 THROUGH 1	

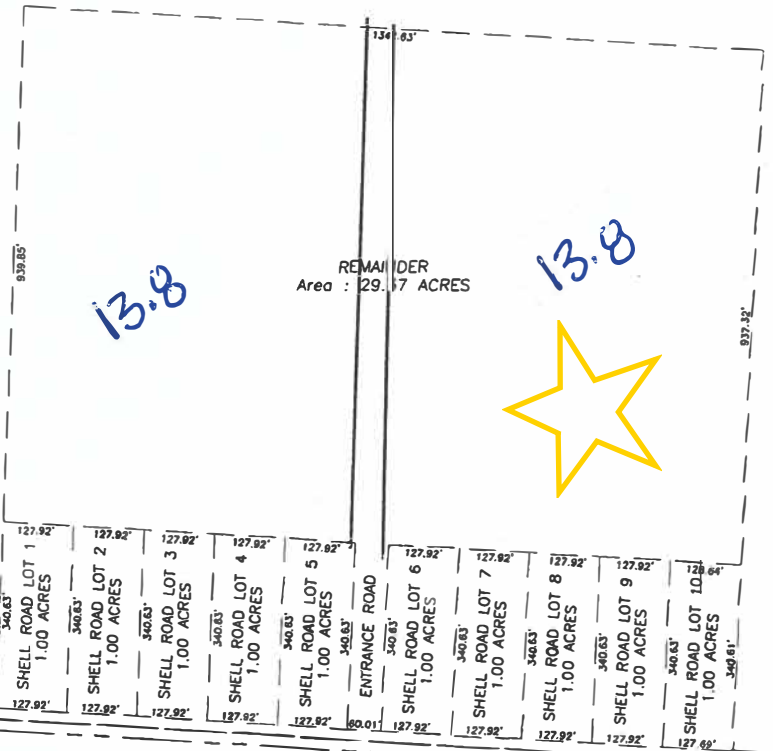
Conceptual Drawing
Shell Road
Santa Rosa County, Florida

Scale: 1" = 100'

SHEET
1 OF 1

DATE
FEBRUARY 2008

DRAWN BY
BARRY DORNEY



SHELL ROAD
±40' MAINTENANCE CLAIM



2/10/08 - SHELL ROAD (SHEET 1 OF 1) P.D.F.