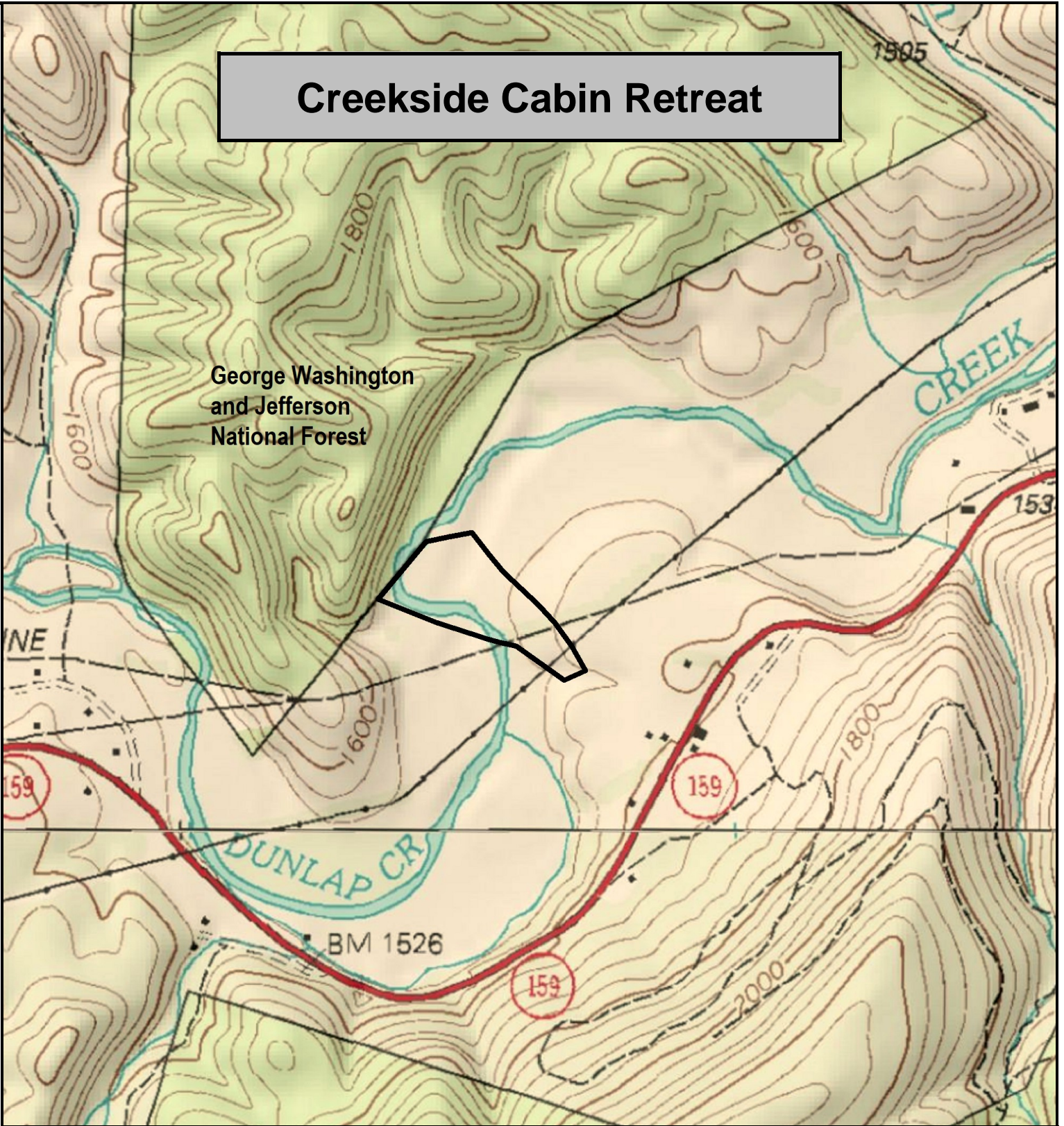


# Creekside Cabin Retreat

George Washington  
and Jefferson  
National Forest



Creekside Cabin Retreat, Alleghany County, VA  
TOPOGRAPHIC MAP

Elevation Range: 1552' - 1579' +/-

Google Coordinates: LAT 37.754657 (N), LON -80.154875 (W)

This map is for general location purposes only. Consult a licensed land surveyor for actual boundary location and acreage.

FOR TOPO MAP

SCALE 1:9600

1 INCH = 800 FT.

