

**\$750,000**  
(Approx. \$2,200 / acre)

# “Forkville 342”

Approx. 342 Acres  
Scott County, MS

Excellent timber investment and recreational property!



- Over a quarter mile of frontage on Highway 483
- Less than 6 miles from Morton, MS
- Very productive timber growing site
- Various ages of genetically improved pine plantations planted from 2006 –2019 including:
  - Approx. 220 acres of 19 yr old planted pine
  - Approx. 59 acres of 9 yr old planted pine
  - Approx. 62 acres of 6 yr old planted pine
- Existing food plots and numerous trails
- Please contact us for more pictures and information!



**Nichols Land  
Stewardship, LLC**

**Office: 601-573-1898  
Cell: 601-672-6290**

**For more information, please contact:**

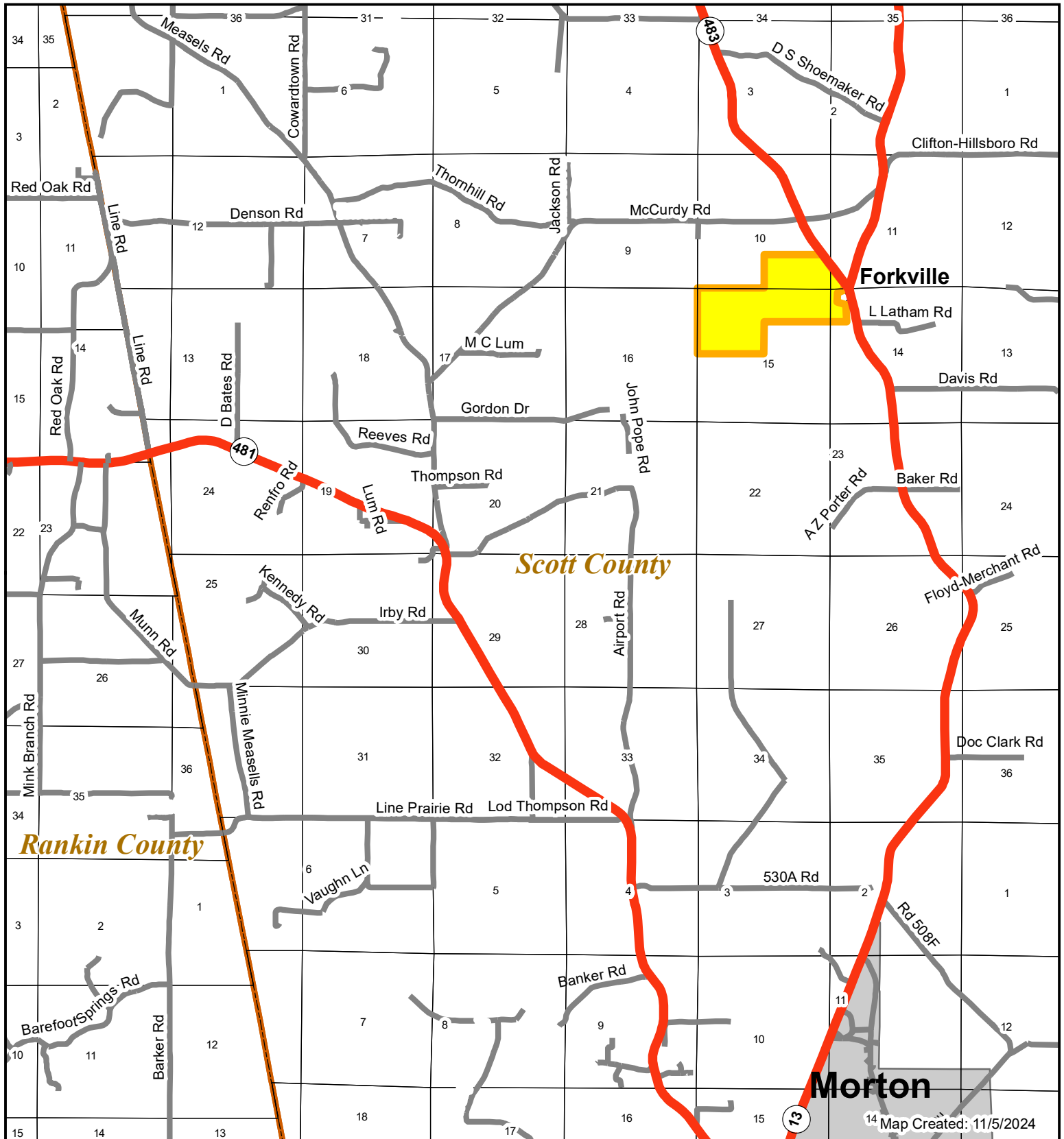


*Buddy Hairston, Sales Agent*  
601-672-6290 cell  
[hairstonforestry@bellsouth.net](mailto:hairstonforestry@bellsouth.net)

# "Forkville 342 Tract"

T 7 N, R 6 E, Scott County MS

Location Map



Listed Acreage (Approx. 342 acres)



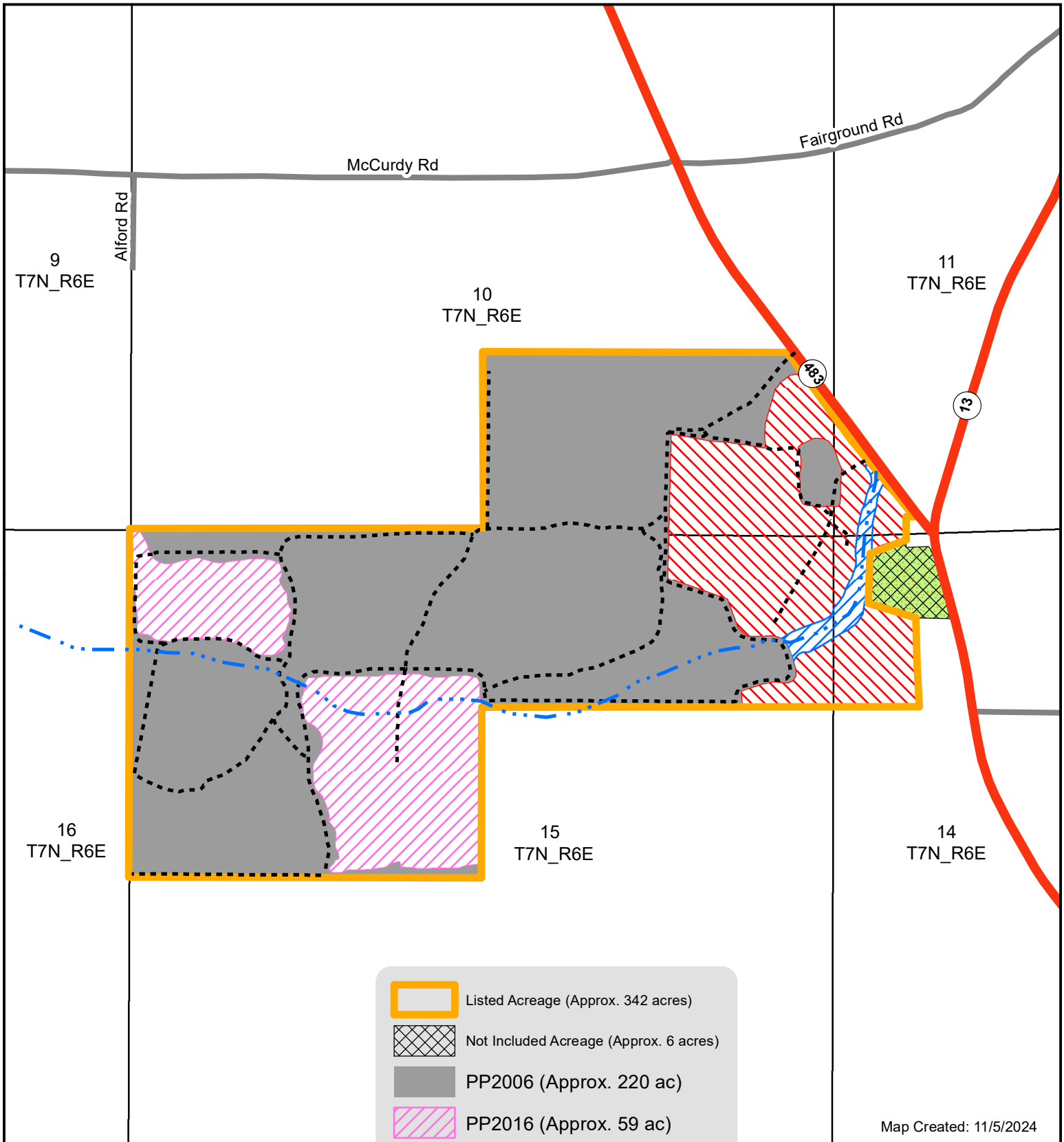
Not Included Acreage (Approx. 6 acres)



# "Forkville 342 Tract"

T 7 N, R 6 E, Scott County MS

Timber Stand Map

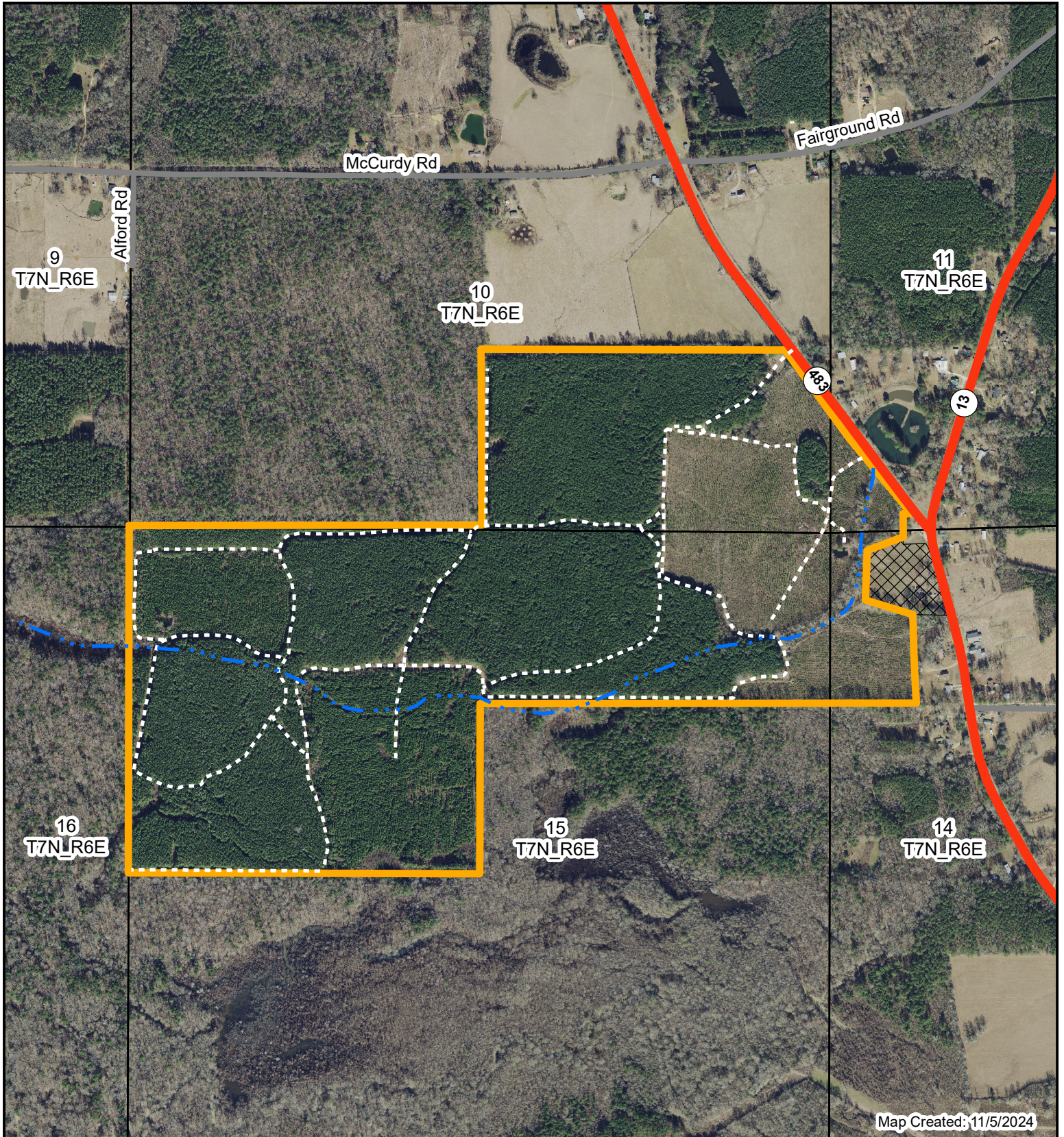



1 inch = 1,000 feet


# "Forkville 342 Tract"

T 7 N, R 6 E, Scott County MS

2023 Leaf Off Aerial



 Listed Acreage (Approx. 342 acres)

 Not Included Acreage (Approx. 6 acres)

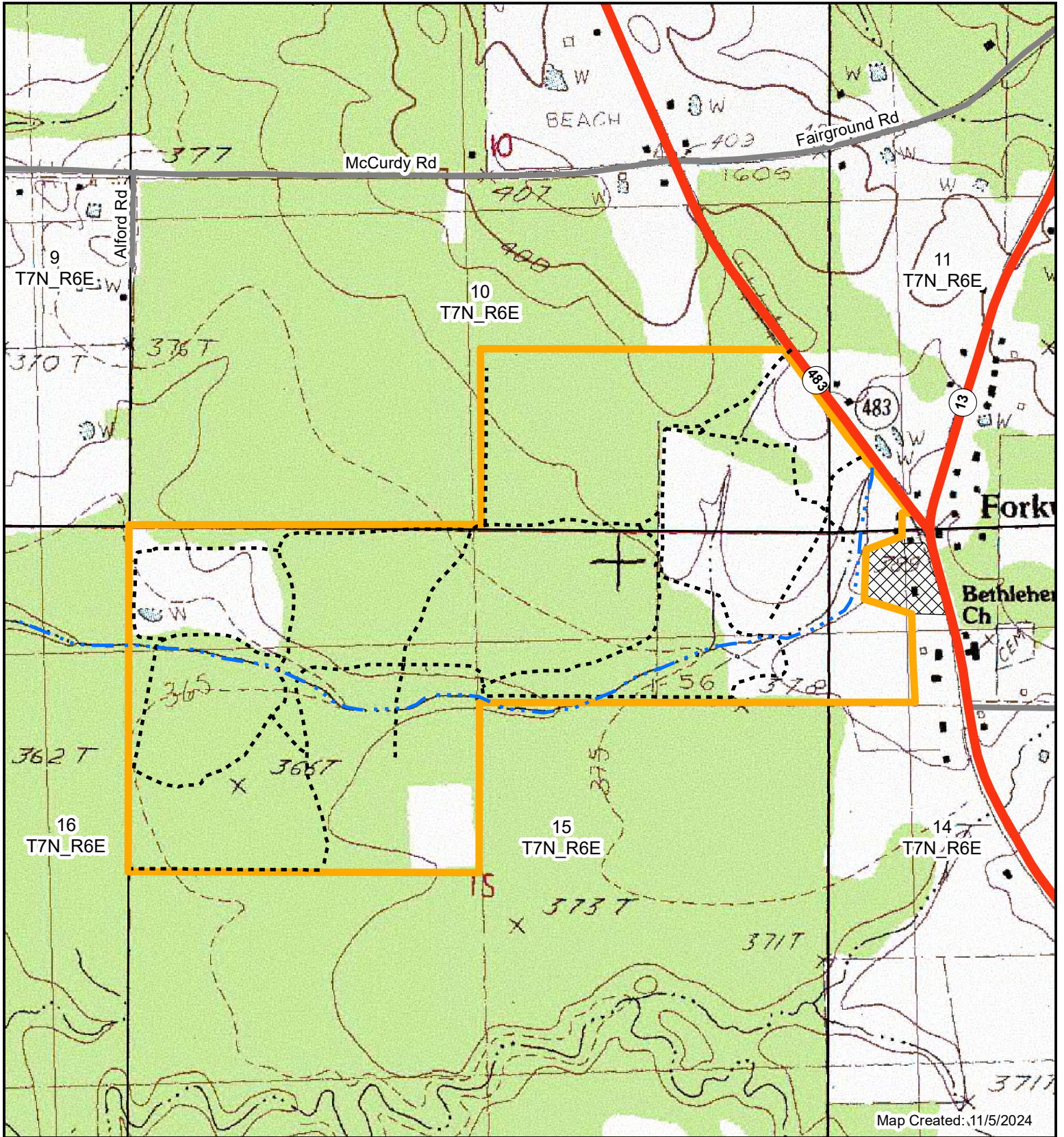


1 inch = 1,000 feet

# "Forkville 342 Tract"

T 7 N, R 6 E, Scott County MS

Topo Map



Map Created: 11/5/2024



Listed Acreage (Approx. 342 acres)



Not Included Acreage (Approx. 6 acres)



1 inch = 1,000 feet