

HALL AND HALL®

Dedicated to Land and Landowners Since 1946

SALES | AUCTIONS | FINANCE | MANAGEMENT | APPRAISALS

Old Elk Ranch | Laramie, Wyoming | \$49,000,000



Executive Summary

The Old Elk Ranch is one of the High Plain's homestead cattle ranches from the early 1900s. It comprises 15,102± deeded acres, 1,060± BLM leased acres, and is approximately 15 miles southeast of Laramie —home to the University of Wyoming. The year-round access ranch includes a beautiful western-style main home, guest quarters for up to 24 people, a shooting range, a fishing lodge, a sizeable machine shop with room for large equipment, and two attached apartments. A well-maintained inner road system connects the extensive compound. Two still-water reservoirs and live springs offer a unique and high-quality fishing experience, while the expansive open range offers consistently large herds of elk for world-class hunting. This Northern Rocky Mountain area is a ranching community with unspoiled natural geography, abundant wildlife, and unparalleled recreational opportunities. A combination of this historical, high altitude, cowboy living, along with proximity to big city life in Denver, has made this area a sought-after location for like-minded individuals and families.





HALL AND HALL®

Dedicated to Land and Landowners Since 1946

SALES | AUCTIONS | FINANCE | MANAGEMENT | APPRAISALS





Just The Facts

- 15,102± deeded acres
- 1,060± BLM leased acres
- Spring fed reservoirs
- Excellent fishing opportunities
- Custom high-quality improvements
- Large, custom timber mill
- Custom shooting course and facilities
- Diverse topography and terrain
- 15 miles from downtown Laramie
- Year-round access
- Extreme privacy
- Redundant ranch utility resources
- Guest lodge and entertaining facilities
- Ranch sleeps over 30 guests at a time
- World-class elk hunting
- Vast wildlife diversity



PETER WIDENER | pwidener@hallandhall.com
248 W. WORKS ST. | SHERIDAN, WY 82801
(O) 307-278-0232 | (M) 307-763-3170

Information provided by Hall and Hall concerning real estate listed for sale is believed to be reliable but is not guaranteed and should be independently verified by potential purchasers. Information is subject to change, withdrawal, or correction. Hall and Hall makes no representations or warranties about the property or the accuracy or completeness of the information concerning the property including, without limitation: that the actual square footage, measurements, acreage, zoning, tax information, school district and other factors that may affect the value or use of the property may vary from that listed or shown in maps or public records and may change; the property's condition, income potential, or compliance with applicable laws or regulations; that estimates of potential rents, income, expenses, and capitalization rates may not be achieved; that some photographs of the property may be digitally enhanced; the legality or enforceability of any covenants, conditions or restrictions that may affect the use any enjoyment of the property; and any changes in market conditions or the future investment value of real estate listed for sale. Hall and Hall is not liable for any inaccuracies, errors, or omissions concerning information about the property or losses that result from the use of this information. Information provided by Hall and Hall concerning the property is not a substitute for inspections, surveys, title searches or other due diligence by potential purchasers. Potential purchasers should perform their own due diligence including legal and financial review before purchasing.

Old Elk Ranch

LARAMIE, WYOMING

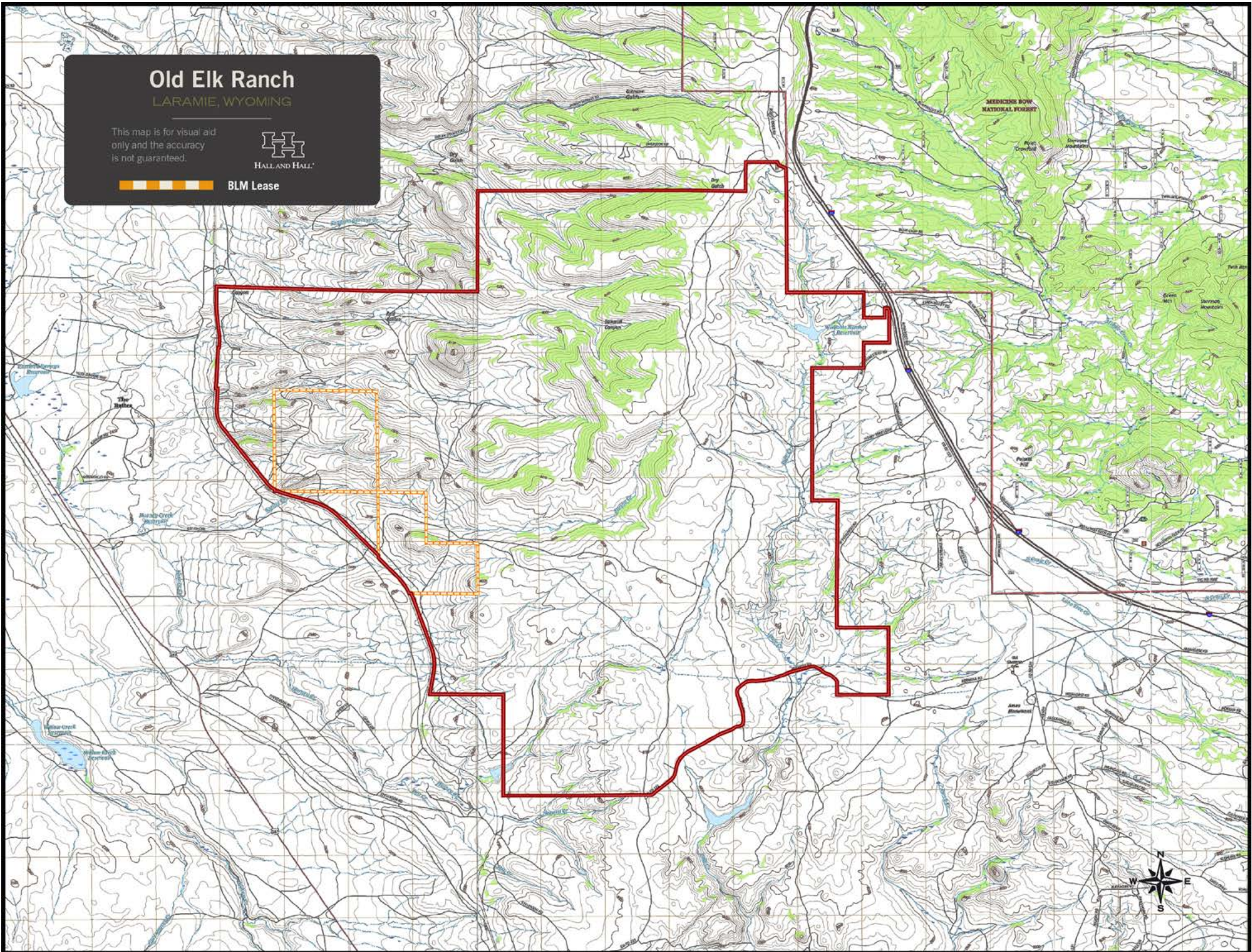
This map is for visual aid only and the accuracy is not guaranteed.



HALL AND HALL



BLM Lease



Old Elk Ranch

LARAMIE, WYOMING

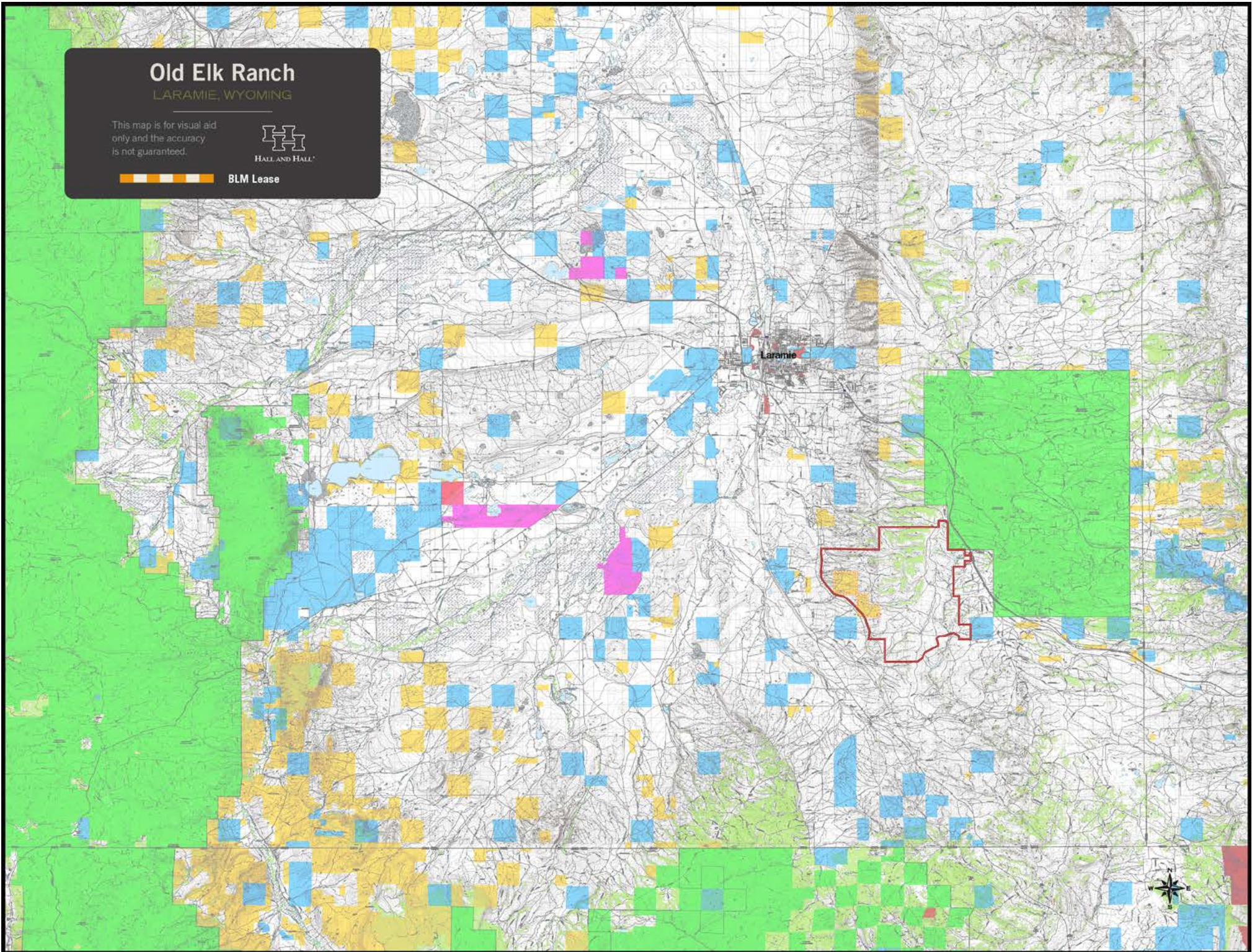
This map is for visual aid only and the accuracy is not guaranteed.



HALL AND HALL



BLM Lease



Old Elk Ranch

LARAMIE, WYOMING

This map is for visual aid only and the accuracy is not guaranteed.



HALLAND HALL

BLM Lease

Medicine Bow National Forest

