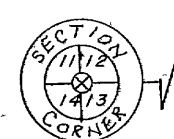


Part of the
SW 1/4 of the SW 1/4
SECTION 12, T39N, R5E
 and part of
GOV'T. LOT 3
SECTION 13, T39N, R5E
 Town of Minocqua
 Oneida County, Wisconsin

RECEIVED & FILED # **B1613**
 Oneida County Surveyor's Office
 Date: **OCT 10 1987**
 By: *[Signature]*
 QCS Area #

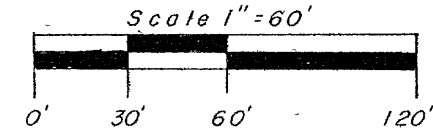
I, JEFFREY W. AUSTIN, Registered Land Surveyor S-1885 hereby certify that we have surveyed the property shown hereon; that this map is a true and accurate representation thereof; that said survey was performed by order of ARETA SNAPP; and that we have complied with applicable requirements of s. A-E of the Wisconsin Administrative Code.

[Signature]
 Jeffrey W. Austin, R.L.S. S-1885
 Dated: **SEPT. 16, 1987**

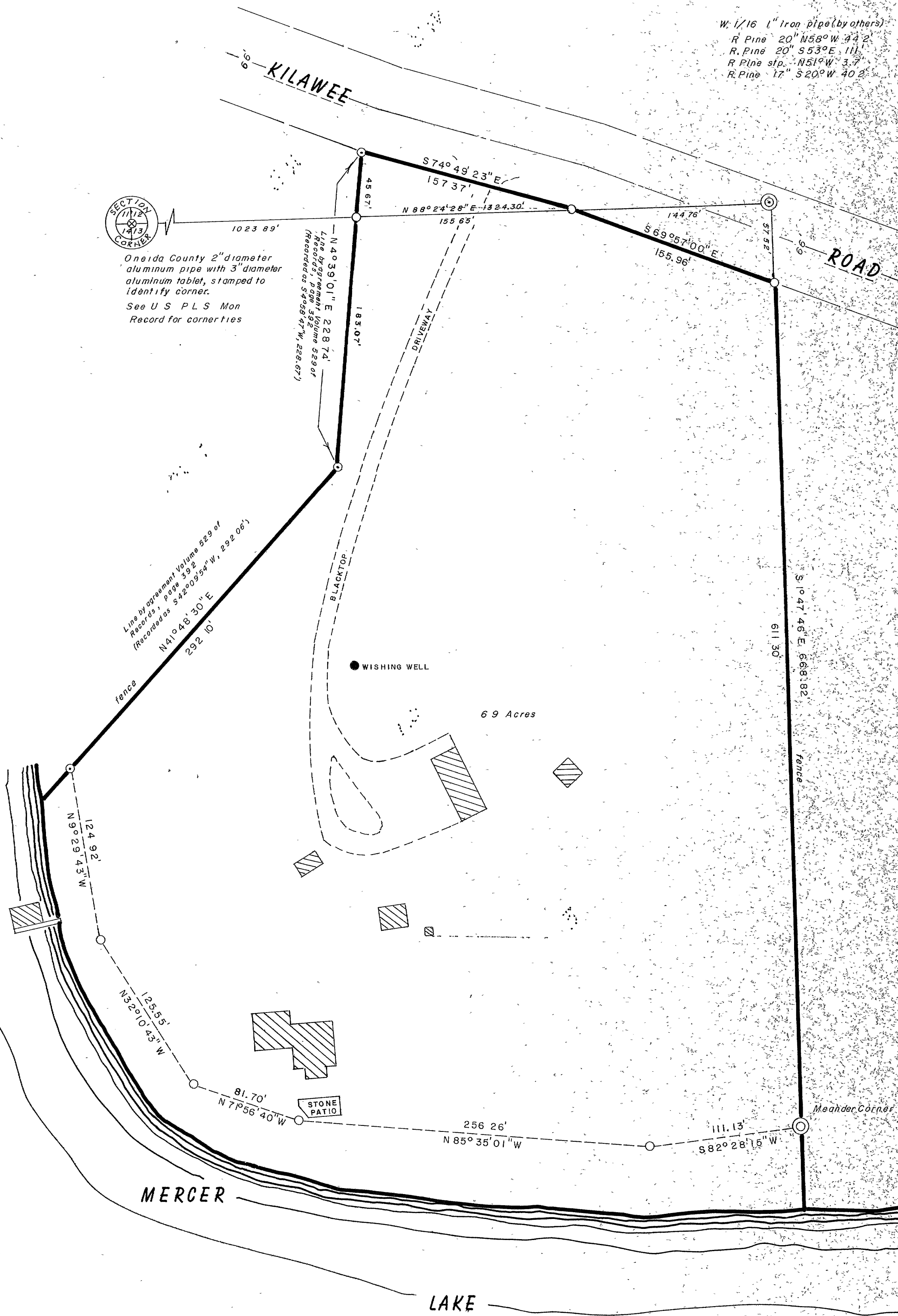


Oneida County 2" diameter aluminum pipe with 3" diameter aluminum tablet, stamped to identify corner.
 See U S P L S Mon Record for corner ties

W. 1/16 1" Iron pipe (by others)
 R. Pine 20" N58°W 44.2'
 R. Pine 20" S53°E 111'
 R. Pine slip N51°W 3.7'
 R. Pine 17" S20°W 40.2'



- ⊗ = Oneida County aluminum monument
- ⊙ = 1" iron pipe found in place
- = 3/4" diameter 30" long iron rod set, weighing 1.55 pounds per lineal foot
- ▨ = Existing building



NORTH COUNTRY
SURVEYORS, INC.
 SURVEYORS - SOIL TESTERS
 Minocqua, Wisconsin

Bearings referred to the northline of Gov't Lot 3 of N 89° 54' 28" E

13 12 395 4 13 395