

# 209 HARBOR VIEW DRIVE MADISON COUNTY, MS

**\$160,000**



## **SMALLTOWN**

**HUNTING PROPERTIES  
& REAL ESTATE<sup>SM</sup>**

**OFFICE (769) 888-2522**



# 209 HARBOR VIEW DRIVE

## PROPERTY PROFILE

### LOCATION:

- 209 Harbor View Drive  
Madison, MS 39110
- Madison County
- 12± Miles North of  
Madison the City

### COORDINATES:

- 32.5634, -90.1619

### PROPERTY USE:

- Potential Homesite

### PROPERTY INFORMATION:

- 0.4823± Acre Waterfront Lot
- New Boat Slip and Seawall
- House Plans upon Request
- Paved Roads
- HOA Restrictions
- Electricity, Water, and Sewer Available
- Lake Caroline Amenities: Swimming,  
Tennis, Walking Trails, Fishing,  
Boating, and So Much More

### TAX INFORMATION:

2022 - \$709.76

- Parcel #: 081A-02-295-00-00



**SMALLTOWN**  
HUNTING PROPERTIES  
& REAL ESTATE<sup>SM</sup>

**RACHEL BOYD**

RESIDENTIAL SPECIALIST

C: 913-212-8419

O: 769-888-2522

[rachel@smalltownproperties.com](mailto:rachel@smalltownproperties.com)

4848 Main St. - Flora, MS 39071

[smalltownproperties.com](http://smalltownproperties.com)

Information is believed to be accurate but not guaranteed.

# WELCOME TO 209 HARBOR VIEW DRIVE

**WATERFRONT! WATERFRONT! WATERFRONT! WELCOME TO LAKE CAROLINE, A WELL SOUGHT-AFTER SUBDIVISION IN MADISON COUNTY, MS!** This 0.4823± acre waterfront lot is in The Shores of Lake Caroline and is ready to go with a new boat slip and seawall for all your boating needs. The 120± acre lake offers great entertainment for all ages: boating, skiing, fishing, or just enjoying the beautiful sunrises and sunsets. Just to the west is the 59± acre Camden Lake, which provides fishing or kayaking for non-motorized boats. The Lake Caroline Golf Club is a private, 18-hole championship golf course located inside the community. The club includes the Grill at Lake Caroline, a nice place to grab lunch or enjoy their Sunday buffet. Tennis and pickleball courts, walking trails, and the three saltwater pools will surely keep you and your guests entertained within Lake Caroline. The close-knit community will make you feel at home when you partake in one of the fun activities the HOA offers, from a New Year's Eve celebration to a phenomenal fireworks show on the lawn on the 4th of July or any of the other gatherings throughout the year.

**If you've been dreaming of owning lakefront property in a resort-style community, contact Rachel Boyd for your private tour of Lake Caroline today.**



**SMALLTOWN**  
HUNTING PROPERTIES  
& REAL ESTATE<sup>SM</sup>

**RACHEL BOYD**

RESIDENTIAL SPECIALIST

C: 913-212-8419

O: 769-888-2522

[rachel@smalltownproperties.com](mailto:rachel@smalltownproperties.com)

4848 Main St. - Flora, MS 39071

[smalltownproperties.com](http://smalltownproperties.com)

Information is believed to be accurate but not guaranteed.





# SMALLTOWN

HUNTING PROPERTIES  
& REAL ESTATE<sup>SM</sup>

**RACHEL BOYD**  
RESIDENTIAL SPECIALIST

C: 913-212-8419

O: 769-888-2522

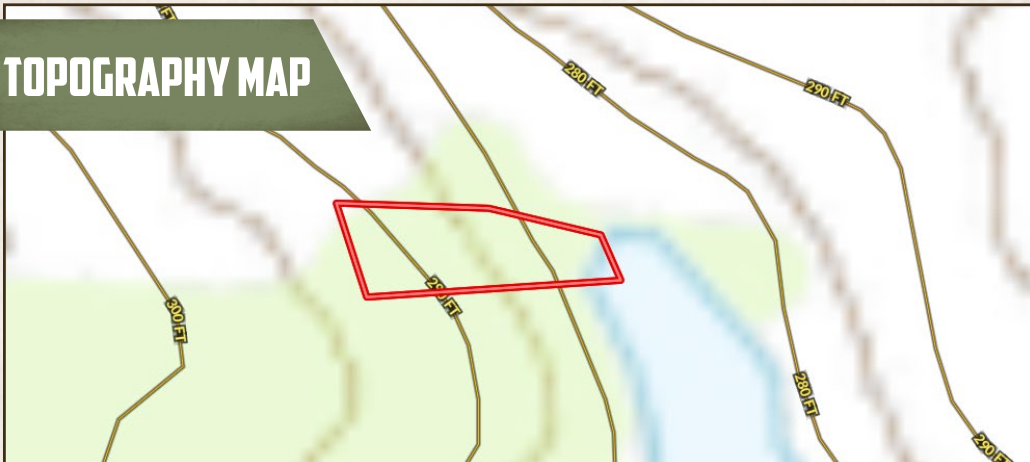
[rachel@smalltownproperties.com](mailto:rachel@smalltownproperties.com)

4848 Main St. - Flora, MS 39071

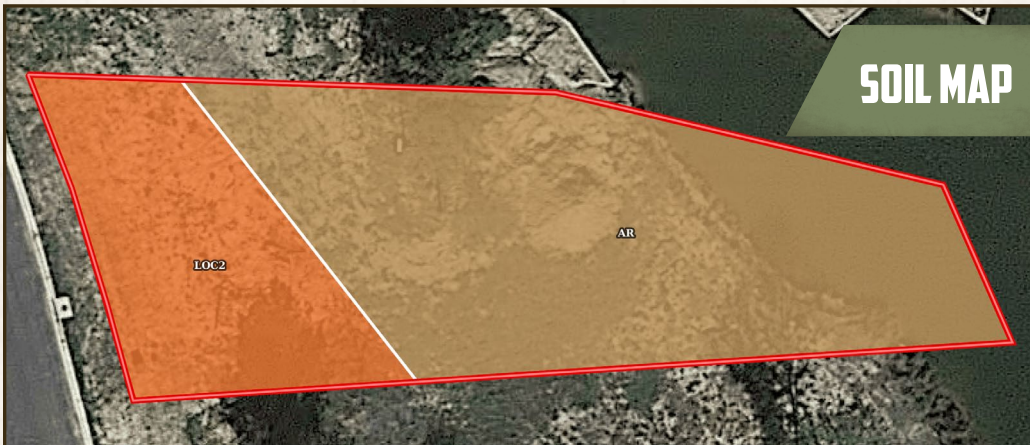
[smalltownproperties.com](http://smalltownproperties.com)



**TOPOGRAPHY MAP**



**SOIL MAP**



SOIL CODE	SOIL DESCRIPTION	ACRES	%	CPI	NCCPI	CAP
Ar	Ariel silt loam	0.32	71.11	0	76	2w
LoC2	Loring silt loam, 5 to 8 percent slopes, moderately eroded, central	0.13	28.89	0	47	4e
<b>TOTALS</b>		0.45(*)	100%	-	67.62	2.58



**SMALLTOWN**  
 HUNTING PROPERTIES  
 & REAL ESTATE<sup>SM</sup>

**RACHEL BOYD**  
 RESIDENTIAL SPECIALIST

C: 913-212-8419

O: 769-888-2522

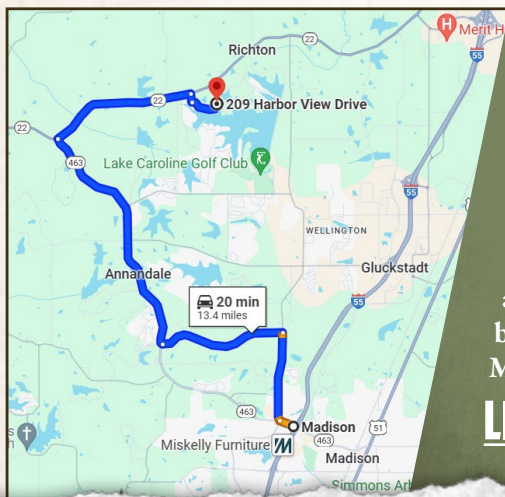
rachel@smalltownproperties.com

4848 Main St. - Flora, MS 39071

smalltownproperties.com

Information is believed to be accurate but not guaranteed.

land id. LINK



Directions From the Intersection of I-55 and Main Street in Madison, MS: Travel 0.3 miles northwest on Main Street. Turn right onto Bozeman Road and travel 1.8 miles. Turn left onto Reunion Parkway and proceed 2.6 miles. Turn right onto MS-463 W and travel 5.0 miles. Turn right onto MS-22E and travel 2.9 miles. Turn right onto Shores Drive and continue 0.2 miles. Turn left onto Harbor View Drive and in 0.6 miles, the destination will be on the right. 209 Harbor View Drive Madison, MS 39110

**LINK TO GOOGLE MAP DIRECTIONS**



**SMALLTOWN**  
HUNTING PROPERTIES  
& REAL ESTATE<sup>SM</sup>

**RACHEL BOYD**

RESIDENTIAL SPECIALIST

C: 913-212-8419

O: 769-888-2522

rachel@smalltownproperties.com

4848 Main St. - Flora, MS 39071

smalltownproperties.com