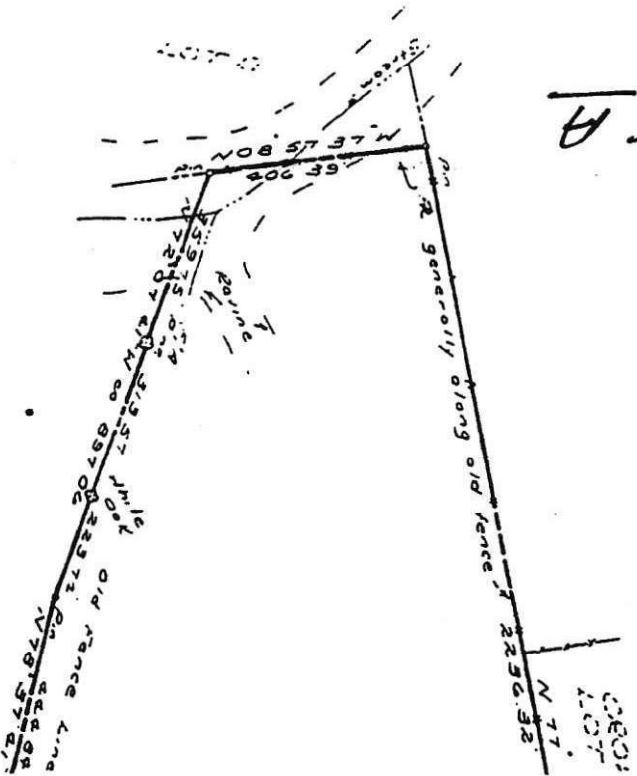




BOUNDARY SU  
of the Land of  
**CHERRY WA**  
CENTRAL MINISTERIAL &  
ESSEX COUNTY, VIRGINIA

**ATTACHMENT A**



Note South by deed description recorded in O B 363 pg 73 West and North by previous survey recorded in P B 1 A pg 187 see O B 63 pg 58 East by N S N 420 being the northern continuation of survey of S V Saunders dated September 1902

Revised January 16, 1902 to show same things

Date January 4, 1902 Scale 1" = 200'

**TOMLIN & KEYSER, P.C.**  
VICOMICO CHURCH VA BRANCH  
TAPPANHAVOCK VA BRANCH

Drawn by V. B. S. 1902



THIS DEED OF EASEMENT was presented in the Office of the Clerk of the Circuit Court of Essex County, Virginia, on the 29th day of December, 1994, and, with the certifi-  
icates and Attachment "A" annexed, admitted to record at 2:40 o'clock p. m.

Teste:

*Theresa W. Wilkins*  
Clerk