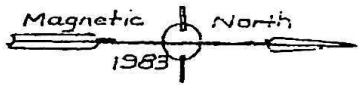


Copy



# BOUNDARY SURVEY LANDS KNOWN OWNED BY EMORY & HENRY U. SCHA OCCUPANCIA MAGISTERI ESSEX COUNTY, V



Charles E. Lemlin, Jr.  
CERTIFICATE No. 697

Map of  
of 1  
by 6  
Coun  
11-4  
GLAV

Not  
by  
M.C.

STUDY  
CODE

by 1

+

+

+

+

+

+

+

+

+

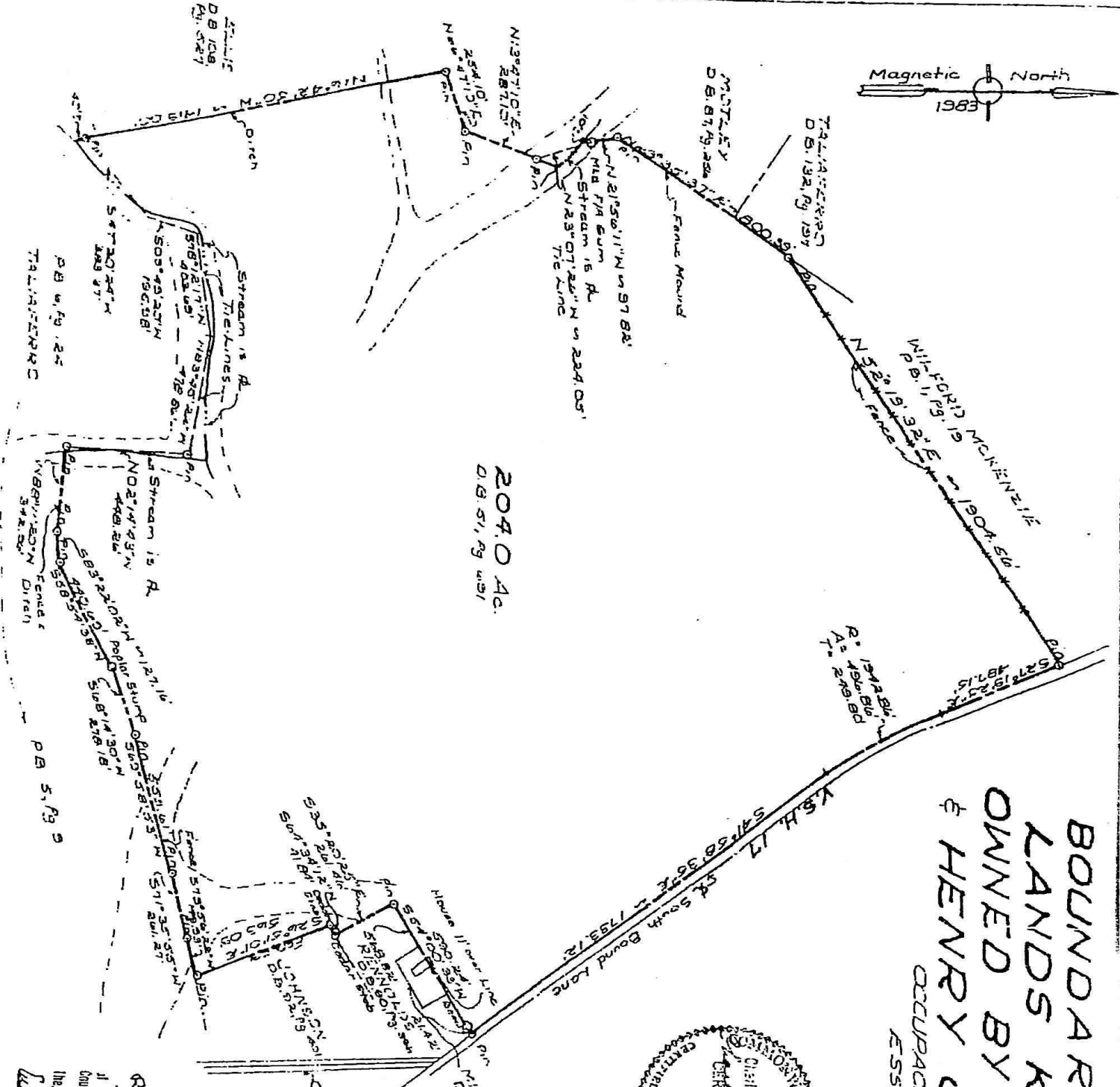
+

+

+

204 Acres Tax Map 19-57 Parcel 15

204.0 Ac.  
D.B. 51, Pg. 491



Revised  
Sheet in the Clerk's Office  
of Essex County, Va., Circuit  
Court

The Clerk of the Court  
Lester A. Cole, Clerk