

**100± ACRES**  
**AMITE COUNTY, MS**  
**\$425,000**



**SMALLTOWN**  
HUNTING PROPERTIES  
& REAL ESTATE<sup>SM</sup>

**OFFICE (769) 760-0005**



# THE AMITE 100

# PROPERTY PROFILE

## LOCATION:

- Crosby, MS 39633
- Amite County
- Frontage on Hwy 33
- 9± Miles North of Gloster
- 64± Miles North of Baton Rouge

## COORDINATES:

- 31.280383, -91.045661

## PROPERTY USE:

- Hunting
- Recreation
- Cabin Site
- Investment

## PROPERTY INFORMATION:

- 100± Acres
- Rolling Terrain
- Creek Frontage
- Interior Roads/Trails
- Food Plots
- Pine & Hardwood Timber
- Electricity Available

## TAX INFORMATION:

2023 - Estimated \$240.00

- Parcel- Part of 42-900-33-0001300, 42-900-33-0000900, 42-900-33-0001320



**SMALLTOWN**  
HUNTING PROPERTIES  
& REAL ESTATE<sup>SM</sup>

### DENNIS WEST

EAST MISSISSIPPI MANAGING BROKER  
ALABAMA QUALIFYING BROKER  
LOUISIANA ASSOCIATE BROKER

C: 601-248-4396 | O: 769-760-0005

[dennis@smalltownproperties.com](mailto:dennis@smalltownproperties.com)

2121 5th St., Ste 206 - Meridian, MS 39301

[smalltownproperties.com](http://smalltownproperties.com)



# WELCOME TO THE AMITE 100

**WELCOME TO THE AMITE 100, A PRIME OPPORTUNITY FOR DEER AND TURKEY HUNTING ENTHUSIASTS!** Situated on Highway 33 just minutes from the town of Crosby, MS, this 100± acre Amite County tract is worth considering. The property features a mix of older pine timber and patches of hardwood with creek frontage, providing excellent wildlife habitat. Well-maintained trails and established food plots with stands are already in place, making this a turn-key hunting destination. If you are interested in building a home or cabin, there are several sites and electricity is available. The rolling hills add to the scenic beauty, and its location being approximately 80 minutes from Baton Rouge makes it a perfect recreational retreat or investment opportunity. Additional acreage is available.

**To explore all the Amite 100 has to offer, call Dennis West today.**



**SMALLTOWN**  
HUNTING PROPERTIES  
& REAL ESTATE<sup>SM</sup>

**DENNIS WEST**

*EAST MISSISSIPPI MANAGING BROKER*

*ALABAMA QUALIFYING BROKER*

*LOUISIANA ASSOCIATE BROKER*

**C: 601-248-4396 | O: 769-760-0005**

**[dennis@smalltownproperties.com](mailto:dennis@smalltownproperties.com)**

**2121 5th St., Ste 206 - Meridian, MS 39301**

**[smalltownproperties.com](http://smalltownproperties.com)**



100± ACRES

AMITE COUNTY, MISSISSIPPI



# SMALLTOWN

HUNTING PROPERTIES  
& REAL ESTATE<sup>SM</sup>

**DENNIS WEST**

*EAST MISSISSIPPI MANAGING BROKER*

*ALABAMA QUALIFYING BROKER*

*LOUISIANA ASSOCIATE BROKER*

**C: 601-248-4396 | O: 769-760-0005**

**dennis@smalltownproperties.com**

**2121 5th St., Ste 206 - Meridian, MS 39301**

**smalltownproperties.com**

*Information is believed to be accurate but not guaranteed.*



100± ACRES

AMITE COUNTY, MISSISSIPPI



**SMALLTOWN**  
HUNTING PROPERTIES  
& REAL ESTATE<sup>SM</sup>

**DENNIS WEST**

*EAST MISSISSIPPI MANAGING BROKER*

*ALABAMA QUALIFYING BROKER*

*LOUISIANA ASSOCIATE BROKER*

**C: 601-248-4396 | O: 769-760-0005**

**dennis@smalltownproperties.com**

**2121 5th St., Ste 206 - Meridian, MS 39301**

**smalltownproperties.com**

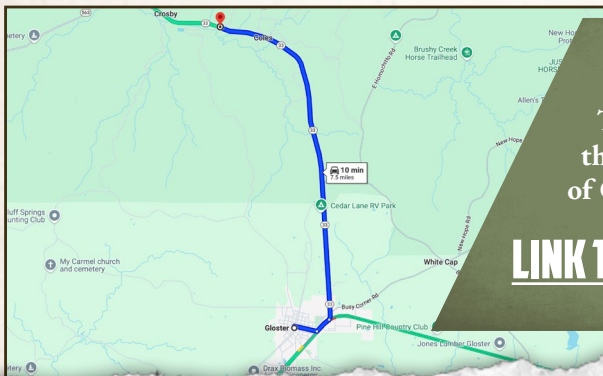
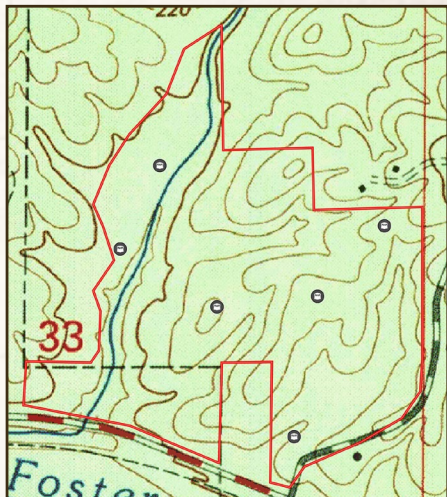
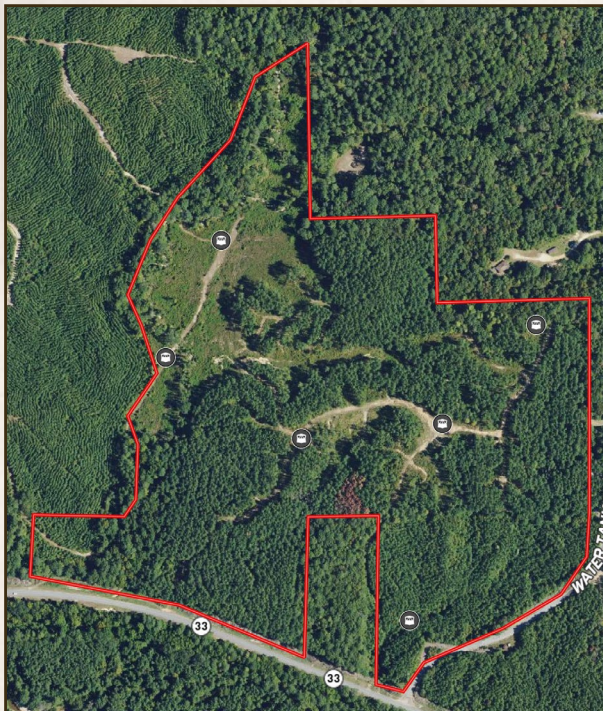
*Information is believed to be accurate but not guaranteed.*



100± ACRES

AMITE COUNTY, MISSISSIPPI

land id.  
**LINK**



Directions From Gloster, MS:  
Travel 9 miles north on Hwy 33 to the property on the right just south of Crosby.

**LINK TO GOOGLE MAP DIRECTIONS**



**SMALLTOWN**  
HUNTING PROPERTIES  
& REAL ESTATE<sup>SM</sup>

**DENNIS WEST**

*EAST MISSISSIPPI MANAGING BROKER  
ALABAMA QUALIFYING BROKER  
LOUISIANA ASSOCIATE BROKER*

**C: 601-248-4396 | O: 769-760-0005**

**dennis@smalltownproperties.com**

**2121 5th St., Ste 206 - Meridian, MS 39301**

**smalltownproperties.com**



*Information is believed to be accurate but not guaranteed.*