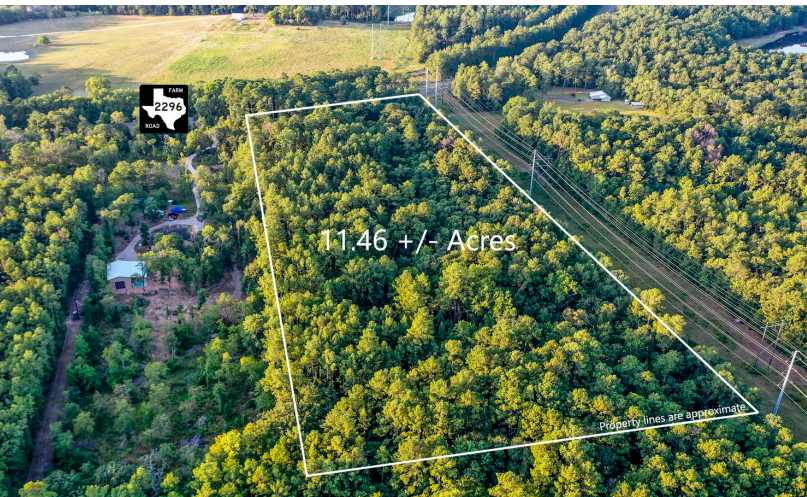




11.46 +/- Acres

FM 2296 ROAD
HUNTSVILLE, TEXAS

Property lines are approximate

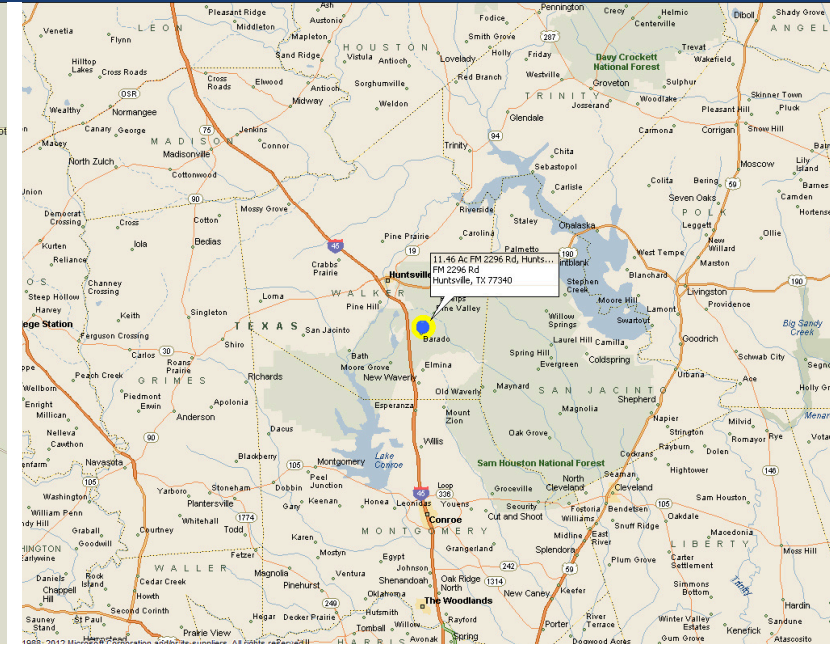
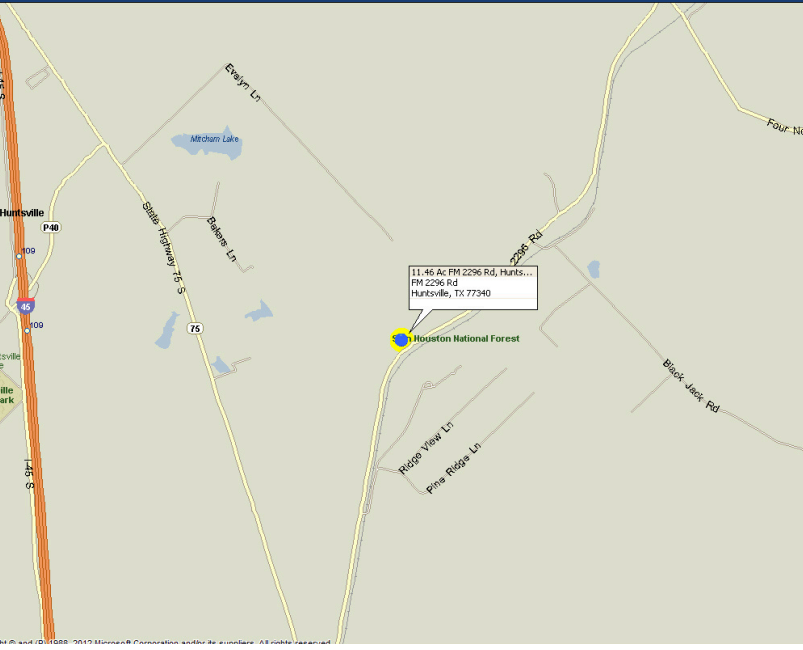


11.46 +/- Acres

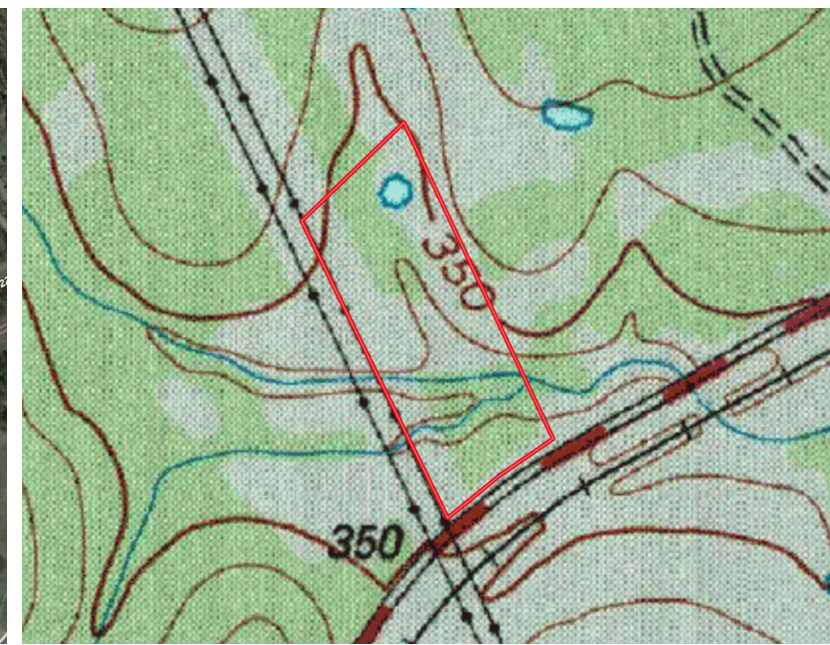
Property lines are approximate



11.462 ACRES



Beautiful property in great location! This 11.46, +/- acre unrestricted tract has approximately 450 feet of FM frontage with two entrances, a mix of hardwood and pine trees and sandy loam soil. It is located in New Waverly ISD and ready for you to come make it yours!



Markham Realty
Selling Quality Texas Properties Since 1970
contact@markhamrealty.com
936-295-5989 | markhamrealty.com



Scan here for additional information & photos.



Information furnished is from sources deemed reliable, but is not guaranteed by Markham Realty, Inc. The offerings are subject to change in price, errors, omissions, prior sales, or withdrawal without notice. Square footage, acreage size and lot dimensions are approximate. All persons and firms named in this brochure are licensed brokers or salespersons. Markham Realty, Inc. will co-broker with any licensed Broker if Broker and/or agent accompanies his or her prospective buyer from the first (1st) showing forward.