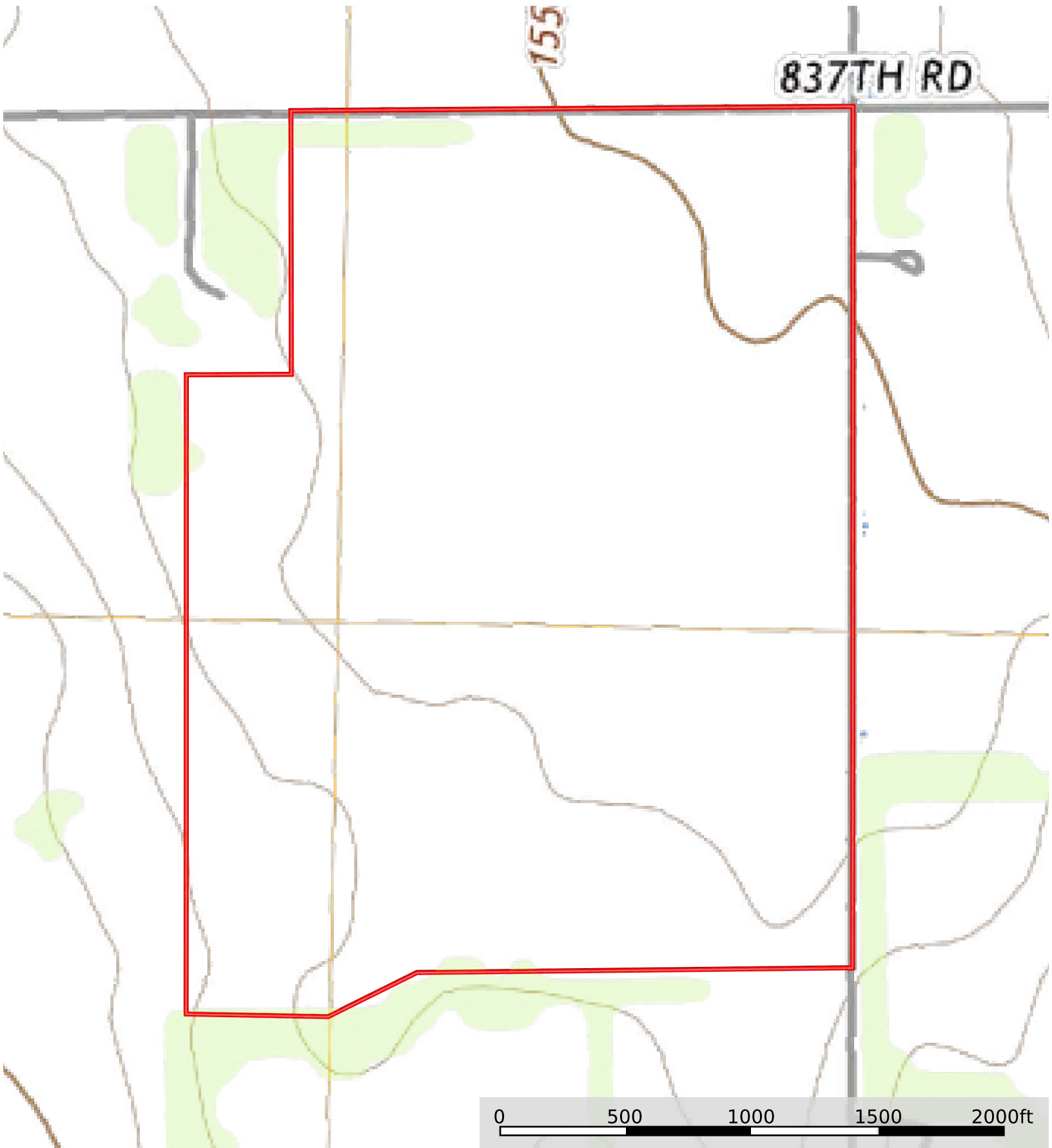




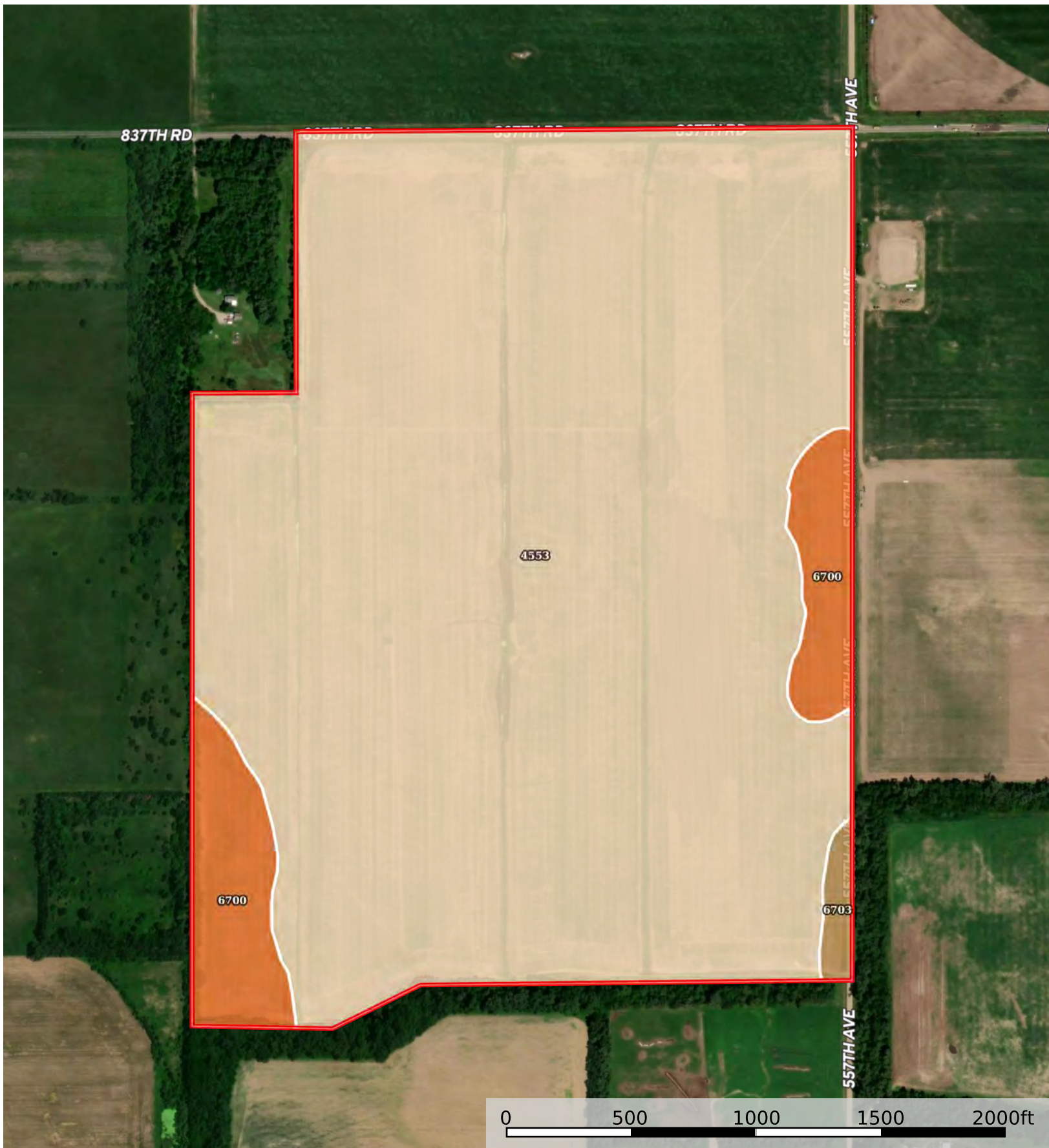
 Boundary

Madison05

Madison County, Nebraska, 201.1 AC +/-



 Boundary



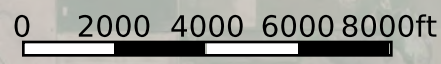
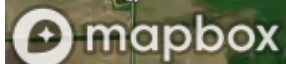
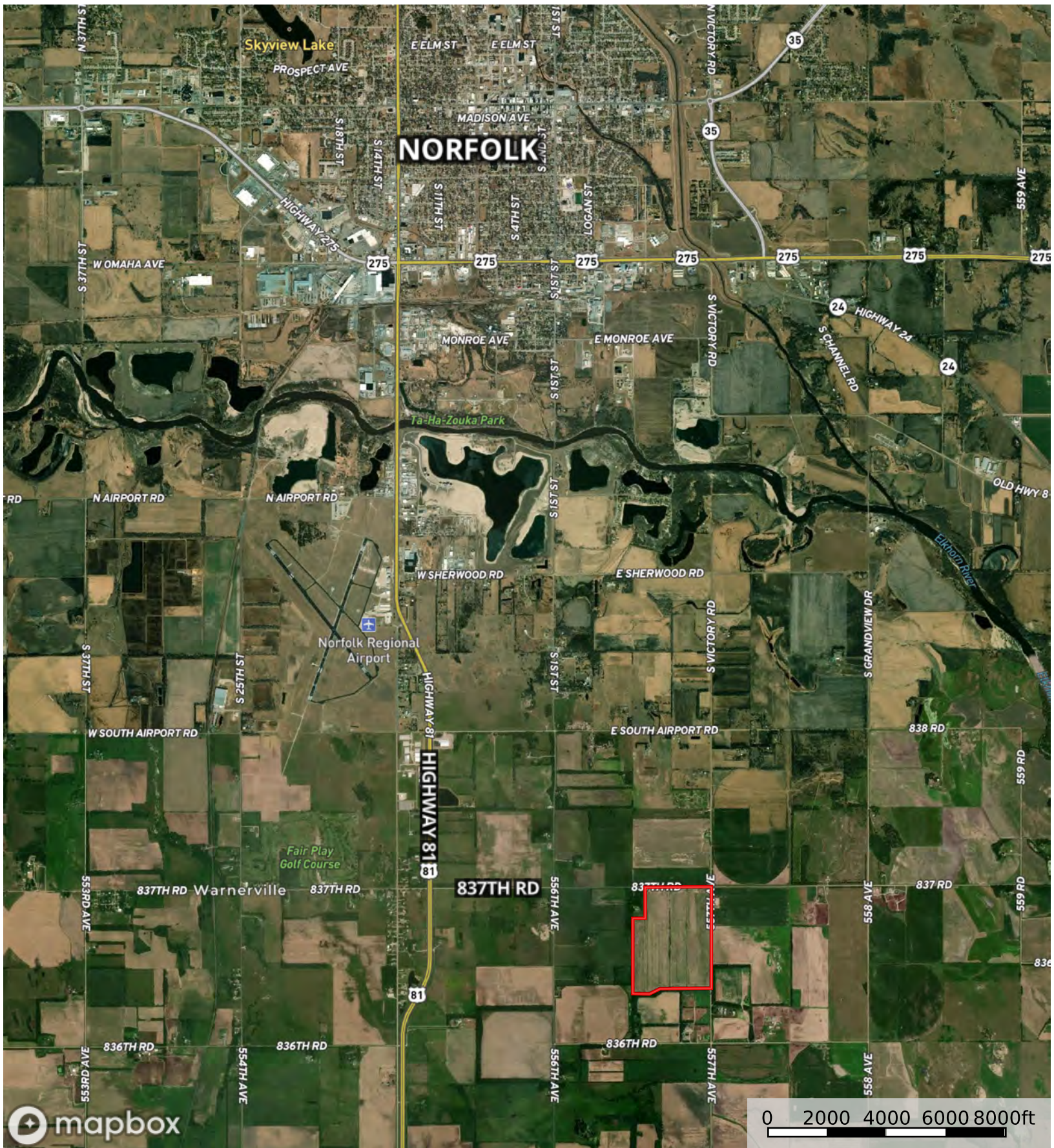
 Boundary

Boundary 200.95 ac

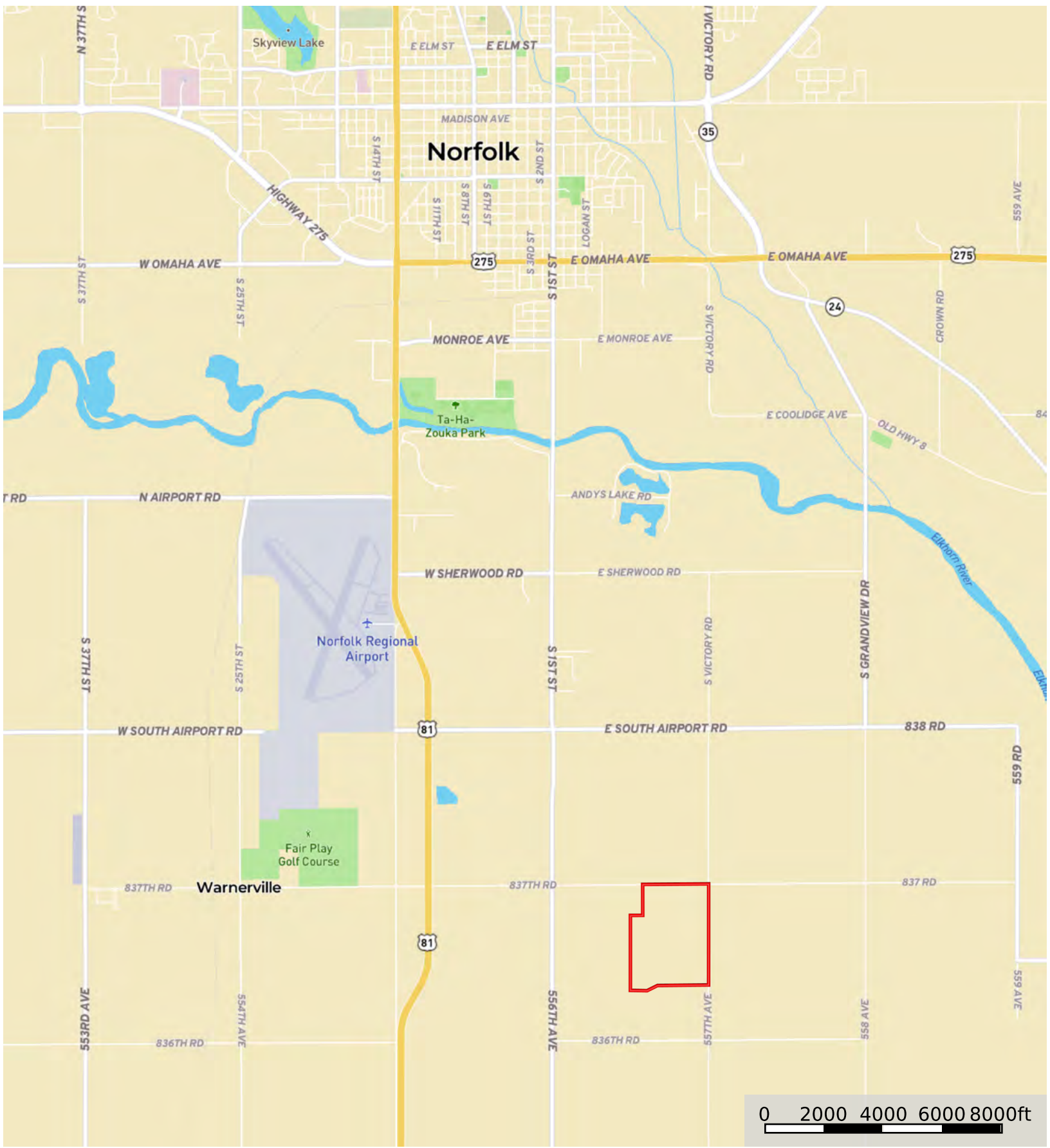
SOIL CODE	SOIL DESCRIPTION	ACRES	%	CPI	NCCPI	CAP
4553	Elsmere loamy fine sand, 0 to 2 percent slopes, rarely flooded	184.45	91.79	0	47	4w
6700	Thurman loamy fine sand, 0 to 2 percent slopes	14.88	7.4	0	49	3e
6703	Thurman loamy fine sand, 2 to 6 percent slopes	1.62	0.81	45	48	4e
TOTALS		200.95(*)	100%	0.36	47.16	3.93

(*) Total acres may differ in the second decimal compared to the sum of each acreage soil. This is due to a round error because we only show the acres of each soil with two decimal.





Boundary



 Boundary