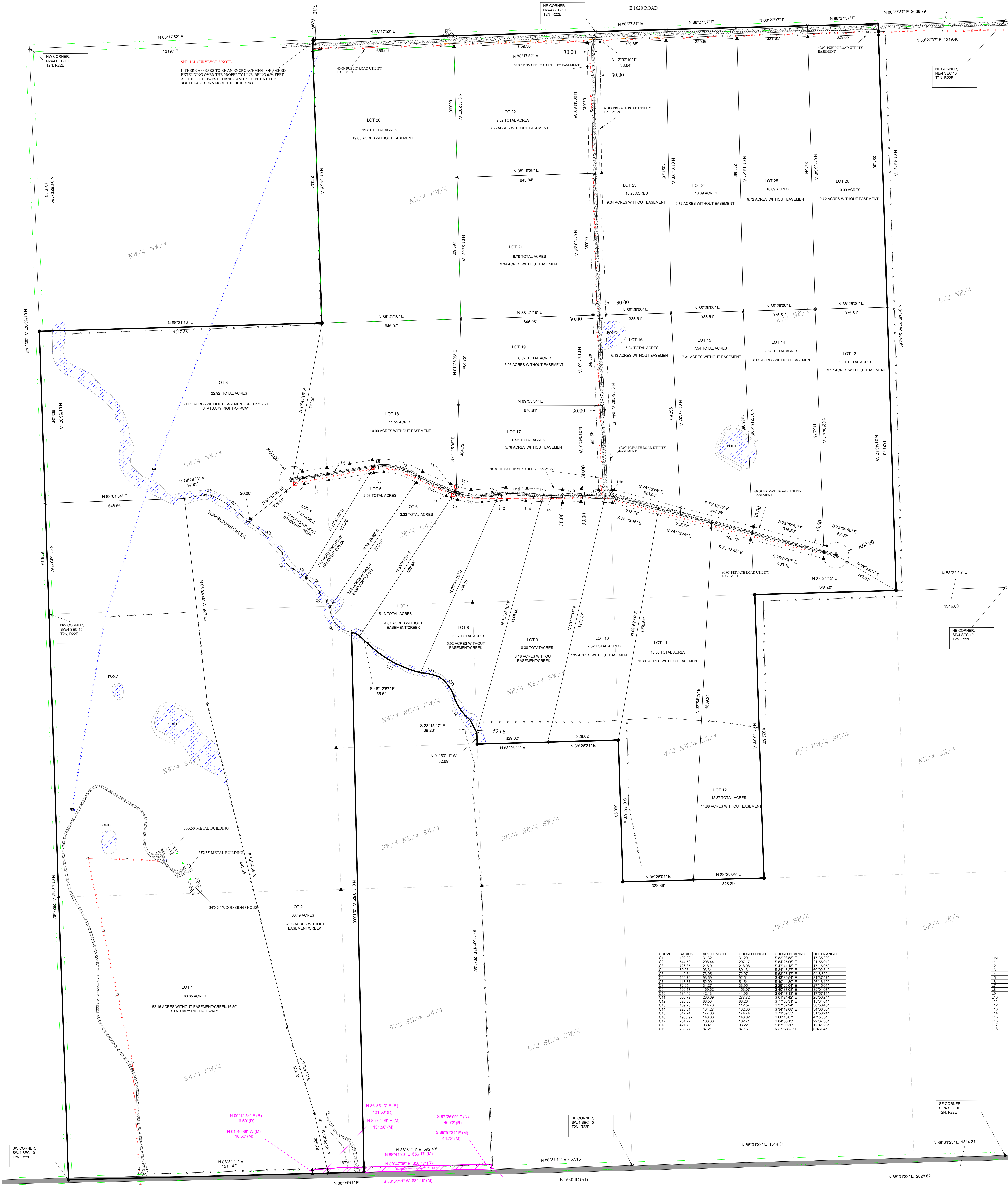


STONE CREEK ADDITION

A SUBDIVISION OF PUSMATAHA COUNTY
SECTION 10, TOWNSHIP 3 NORTH, RANGE 22 EAST
PUSMATAHA COUNTY, STATE OF OKLAHOMA



CURVE	RADIUS	ARC LENGTH	CHORD LENGTH	CHORD BEARING	DELTA ANGLE
CD	150.00	31.39	31.39	S 85°00'00" E	17°30'00"
CE	544.50	208.44	207.17	S 24°20'00" E	21°30'00"
CF	785.35	218.91	218.90	S 47°11'00" E	17°30'00"
CG	869.96	83.38	83.37	S 34°52'00" E	20°30'00"
CH	449.64	73.00	72.89	S 45°33'00" E	17°30'00"
CI	169.70	83.69	82.51	S 43°05'00" E	17°30'00"
CJ	113.37	52.00	51.84	S 40°45'00" E	17°30'00"
CK	72.06	34.27	33.99	S 38°00'00" E	17°30'00"
CL	109.17	109.04	109.07	S 47°11'00" E	17°30'00"
CM	334.40	142.19	141.96	S 47°11'00" E	17°30'00"
CN	355.22	286.98	286.96	S 47°11'00" E	17°30'00"
CO	355.22	286.98	286.96	S 47°11'00" E	17°30'00"
CP	169.29	114.78	113.57	S 37°32'00" E	17°30'00"
CQ	251.61	124.97	124.90	S 34°10'00" E	17°30'00"
CR	317.24	177.03	174.74	S 27°00'00" E	17°30'00"
CS	1369.62	144.89	144.82	S 84°50'00" E	17°30'00"
CT	261.77	103.88	103.77	S 84°50'00" E	17°30'00"
CU	451.76	83.41	83.22	S 87°00'00" E	17°30'00"
CV	178.27	87.21	87.19	N 87°00'00" E	0°45'00"

- LEGEND**
- SET 1/2" STEEL PIN WITH CAP (P.L.S. 2004)
 - SET MAG NAIL WITH ALUM WASHER (P.L.S. 2004)
 - SET 1/4" NAIL WITH ALUM WASHER (P.L.S. 2004)
 - FOUND 1/2" STEEL PIN WITH CAP (P.L.S. 2004)
 - FOUND 1/4" STEEL PIN
 - FOUND 1/2" STEEL PIN WITH CAP (P.L.S. 1000)
 - FOUND 1/4" NAIL
 - FOUND 1/2" STEEL PIN
 - FOUND 1/4" STEEL PIN WITH CAP (P.L.S. 1000)
 - CALCULATED CORNER POINT (R/L)
 - MEASURED FIELD DATA
 - RECORDED FIELD DATA
 - POWER POLE
 - GPS ANCHOR
 - SEWER CLEAN OUT
 - WATER VALVE
 - WATER METER
 - WATER FERRIS
 - TELEPHONE PRESENCE
 - ELECTRIC TRANSFORMER
 - BOUNDARY LINE
 - UNDERGROUND TELEPHONE LINE
 - UNDERGROUND ELECTRIC
 - UNDERGROUND ELECTRIC
 - UNDERGROUND WATERLINE
 - PIPE FENCE
 - POWER POLE
 - LINE NOT TO SCALE
 - 1/8" STATUTORY R/W
 - ASPHALT SURFACE
 - GRAVEL
 - CONCRETE SURFACE

ANDERSON CREEK SURVEYING

JAMES A. PAYNE © 2023
PROFESSIONAL LAND SURVEYOR #2034
C.A. # 8950, EXPIRES 6-30-2024

