



# Log Homes

Come Dwell Beyond  
the Ordinary

Discover your next homestead cabin built by Zook  
Cabins exclusively for The Farm at Okefenokee

THE FARM  
— AT OKEFENOKEE —



ZOOK  
Dwell Beyond  
the Ordinary Cabins

# The Healthiest Place on Earth™

## Farm Ownership

### Why Live Here?

Let's live in harmony with Mother Nature. At The Farm at Okefenokee, we're blending the landscape of a working farm with extensive educational and hands-on experiences.

Sustainable Lifestyle

Healthy Food Production

Community & Collaboration

Connection & Nature

Self-Sufficiency & Resilience

Learning & Skill Development



*Being a cabin owner at The Farm means access to all the amenities we have to offer, with as much or as little involvement as you want.*



### Are You Wanting A...

- Simpler way of life
- Slower routine
- Farm-to-table experience
- Cypress log cabin
- Stronger connection with nature
- Break from modern society
- Greater focus on your well-being
- Sustainable and off-grid lifestyle



## Minimize Your Environmental Footprint

Each Cypress cabin is built with natural materials and includes a Galvalume metal roof, modern kitchen, large den, an expansive front porch and deck, and options for indoor and outdoor fireplaces. They also include high-efficiency appliances, water-efficient fixtures, low-VOC (volatile organic compound) finishes and native landscaping.

## Why utilize a pre-built Zook cabin?

A pre-built cabin is a custom home constructed in a climate-controlled manufacturing facility to be delivered in sections and set on a permanent foundation. Upon delivery, the sections are then sealed together, outfitted with the electricity and plumbing you need to occupy it as your home. Pre-built cabins illustrate the beautiful combination of an “ole” cabin feel coupled with the comfort of modern conveniences.

It is critical to have the ability to gently place the cabins within this highly sensitive site and a pre-built Zook cabin enables this approach. This sustainable product was deemed perfect for the task since Zook has been seamlessly delivering and constructing cabins using a very small footprint and with the highest respect to customer properties since 2006.

Every Zook cabin is built stronger than traditionally framed homes to ensure structural integrity during transit. Zook stands behind the quality components of every cabin, with material, manufacturer’s and Zook’s own personal warranties in place.

## Take a Moment...

*Imagine a nice cool evening with the sound of crackling fireplace and the cicadas singing in the background. The night is free from distractions as you reflect on the experiences you had on The Farm that day. Perhaps you learned to collect honey, picked olives, watched a new crop go in or you said hello to a piglet. Tomorrow, you might learn more about cultivating soil for an organic garden. Or maybe get familiar with raising chickens... or possibly growing mushrooms has piqued your curiosity. Next week, you might have the opportunity to make craft cider, specialty cheese or handmade bread from scratch. The possibilities are endless and diverse.*

Experience the joy of these beautiful moments in your very own sustainable, Cypress, off-site Amish-built cabin on The Farm at Okefenokee. You’ll have all the luxurious comforts of home—with The Farm literally as your very own backyard.



### Why a Zook cabin is a custom fit at the Farm:

- Sustainably sourced materials
- Environmentally friendly construction process
- Built in a climate-controlled indoor facility
- Earthy, natural and cozy cypress aesthetic blends seamlessly into The Farm life
- Uniquely custom designed just for The Farm lifestyle
- Seamless delivery and quality construction
- Fully finished and turn-key
- The Zook guarantee and warranty on materials and finished build

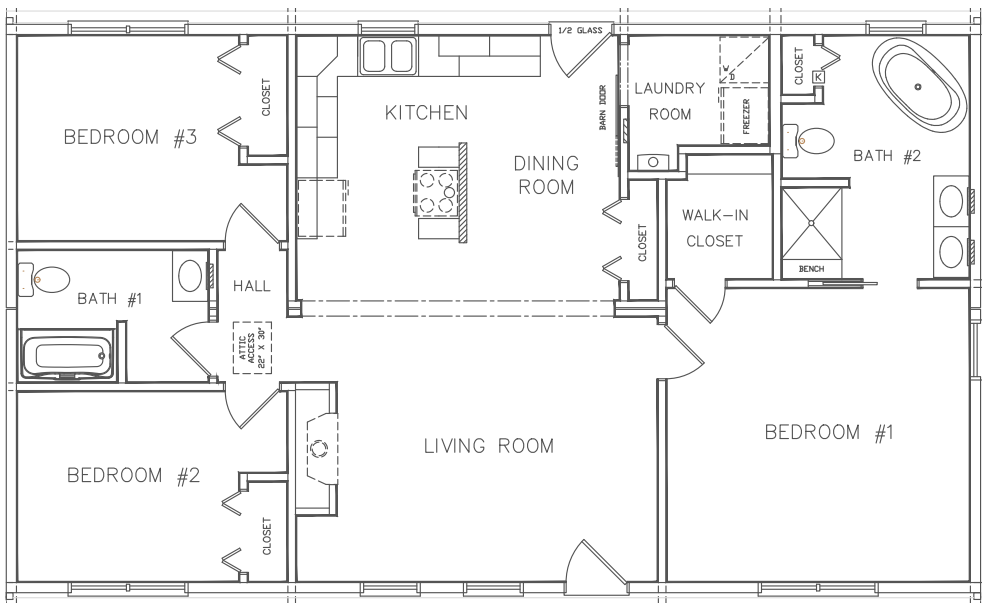
# Choose Your Cabin

## The Mayhaw



1,200 Square Feet • 3 Beds, 2 Baths  
Ranch Style Cabin With Ample Outdoor Living Space

The Mayhaw cabin offers ample outdoor living space on the 8' x 48' porches on the front and rear. The kitchen boasts a cooktop in the center kitchen island. The Master has a luxurious soaking tub separate shower, and walk-in closet.



Log Homes Built by Zook Cabins exclusively for The Farm at Okefenokee

**Specifications for all cabins:**

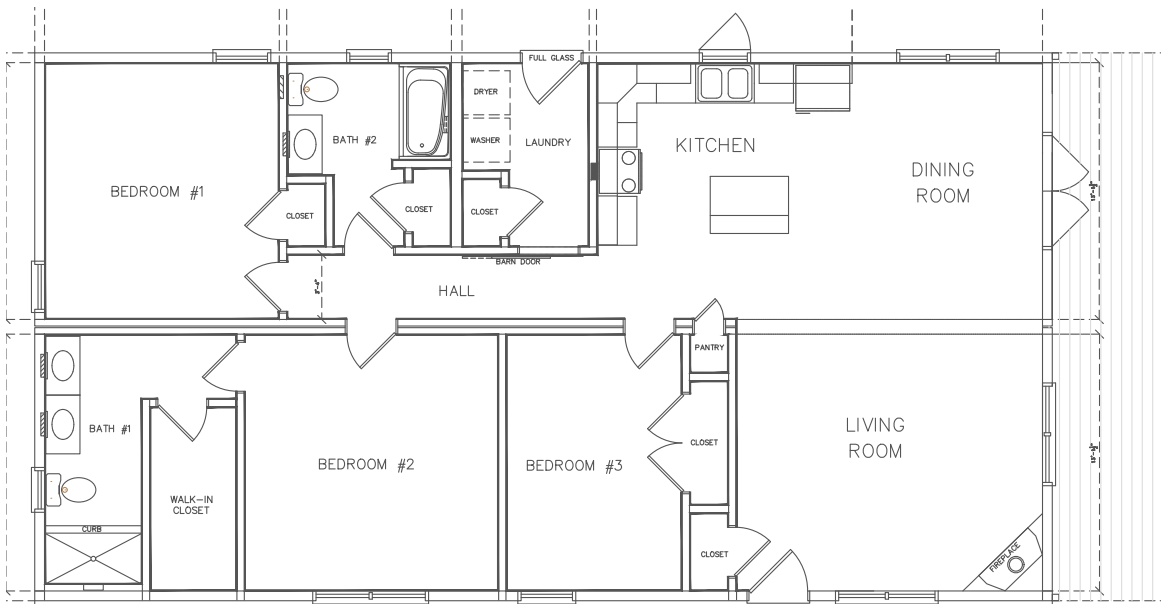
- Galvalume metal roof
- 2x6 exterior wall construction clad with Cypress log siding
- Drywall partition walls and pine ceiling
- Pressure treated porch decking
- Walls: insulation package to meet or exceed local energy codes
- Insulated windows with low-e/argon glass
- Solid wood doors



**1,450 Square Feet • 3 Beds, 2 Baths**  
**Shotgun-Style Rancher Cabin With End Porch**



This shotgun-style rancher features an open L-shaped kitchen, spacious dining room and living room complete with a corner fireplace. The Master has an on-suite bathroom with double sinks and large walk-in closet.



# Choose Your Cabin

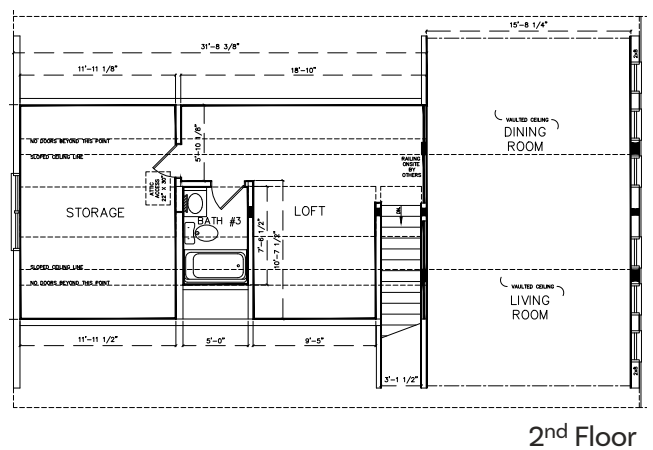
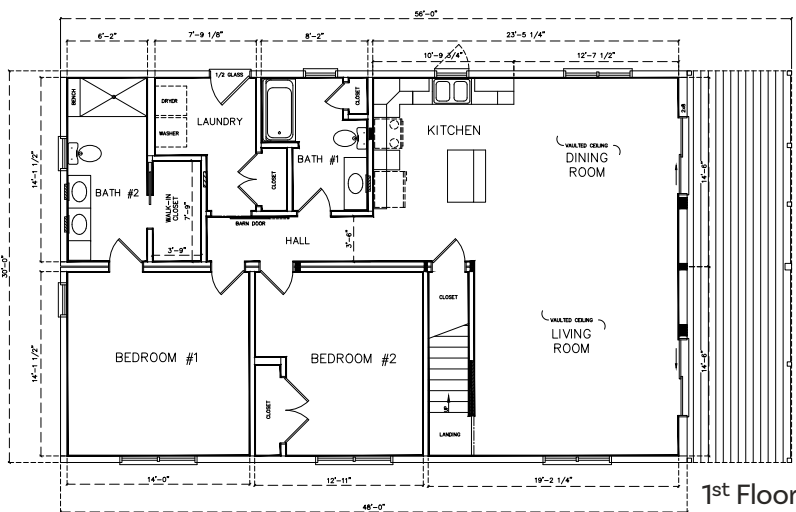


*The Royal Palm*



1,900 Square Feet • 3 Beds, 3 Baths  
Vaulted Ceiling With Vista Windows in the Gable

The Royal Palm features Vista gable windows create a vaulted ceiling which lets light shine throughout the open floorplan. This beautiful cabin includes an open living, dining and kitchen. The front porch is available as an add-on. The second floor is fully finished, including a loft landing and a third bedroom or storage area with an upstairs bath.



Every Zook cabin is prefabricated using modular techniques. The modular sections are built stronger than traditionally framed homes to ensure structural integrity during transit, set on a permanent foundation, and finished on-site.

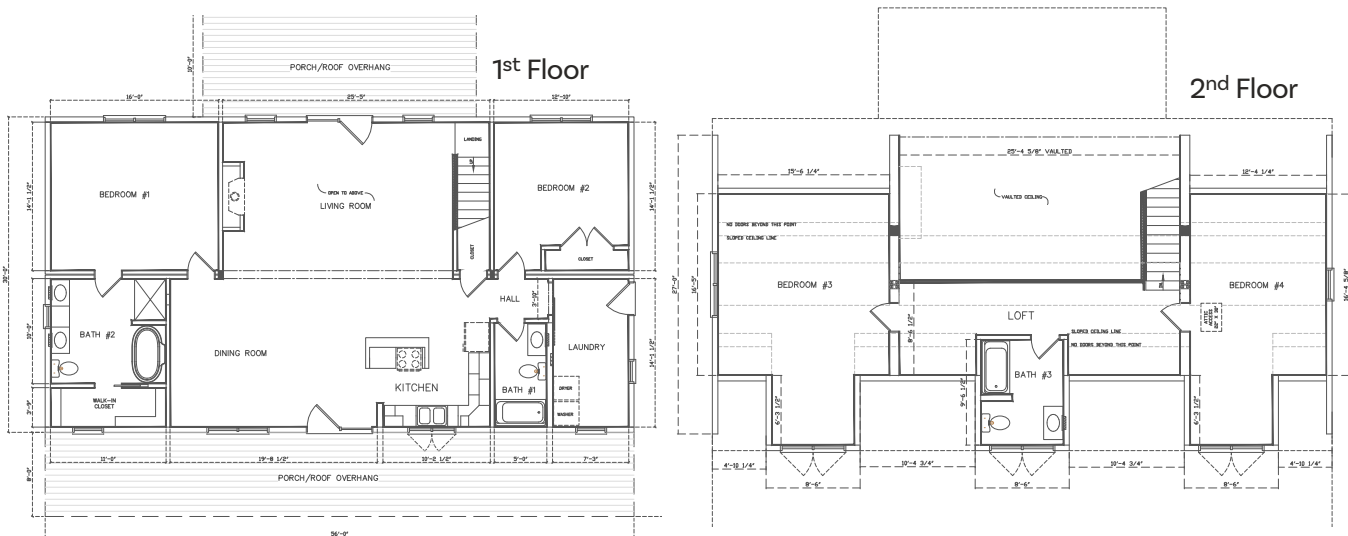


# The Belgian

2,400 Square Feet • 4 Beds, 3 Baths  
Vaulted Ceiling With Dormers



The Belgian is the largest featured floorplan with 2,400 of living space. This open floorplan has vaulted ceilings over the living room, a large kitchen island with cooktop and sizable dining area. The first floor also boasts the Master bedroom/bathroom and a second bedroom across from the second full bathroom and generous laundry room. Upstairs you'll find two more bedrooms, each with dormers, connected by a loft that overlooks the living area and a third shared bathroom.





## About The Farm

A farm-focused sustainable residential community where the focal point is an experience of regenerative farming and animal husbandry. The Farm is the next step in the farm-to-table concept. Our sustainable living and recreational activities exist in harmony. The Farm literally is reimagining how residents and visitors engage, while seamlessly blending into the landscape of a working farm - a farm with extensive agricultural operations and a wide variety of educational and experiential opportunities.

## At Zook Cabins

Our mission is rooted in a commitment to people over profits. We advocate for doing things the right way, even if it's not the easiest way. Integrity matters in every endeavor, especially when faced with challenge.

We draw inspiration from the humble heritage of our Amish relatives and the industrious spirit of our community in Lancaster, Pennsylvania.

We aim to deliver unreasonable hospitality, exceptional service, and quality products, while creating meaningful connections and enriching the lives of everyone we meet.

*Zook Cabins has been ranked #100 on the Financial Times' America's Fastest-Growing Companies 2024 list!*



Zook Cabins  
5075 Lower Valley Rd. (Rte. 372)  
Atglen, PA 19310

(610) 593-4556  
jason@zookcabins.com  
www.zookcabins.com



The Farm at Okefenokee  
103 Doc Rider Road  
Folkston, GA 31537

info@okefarm.com  
www.okefarm.com



Scan to find out more!

