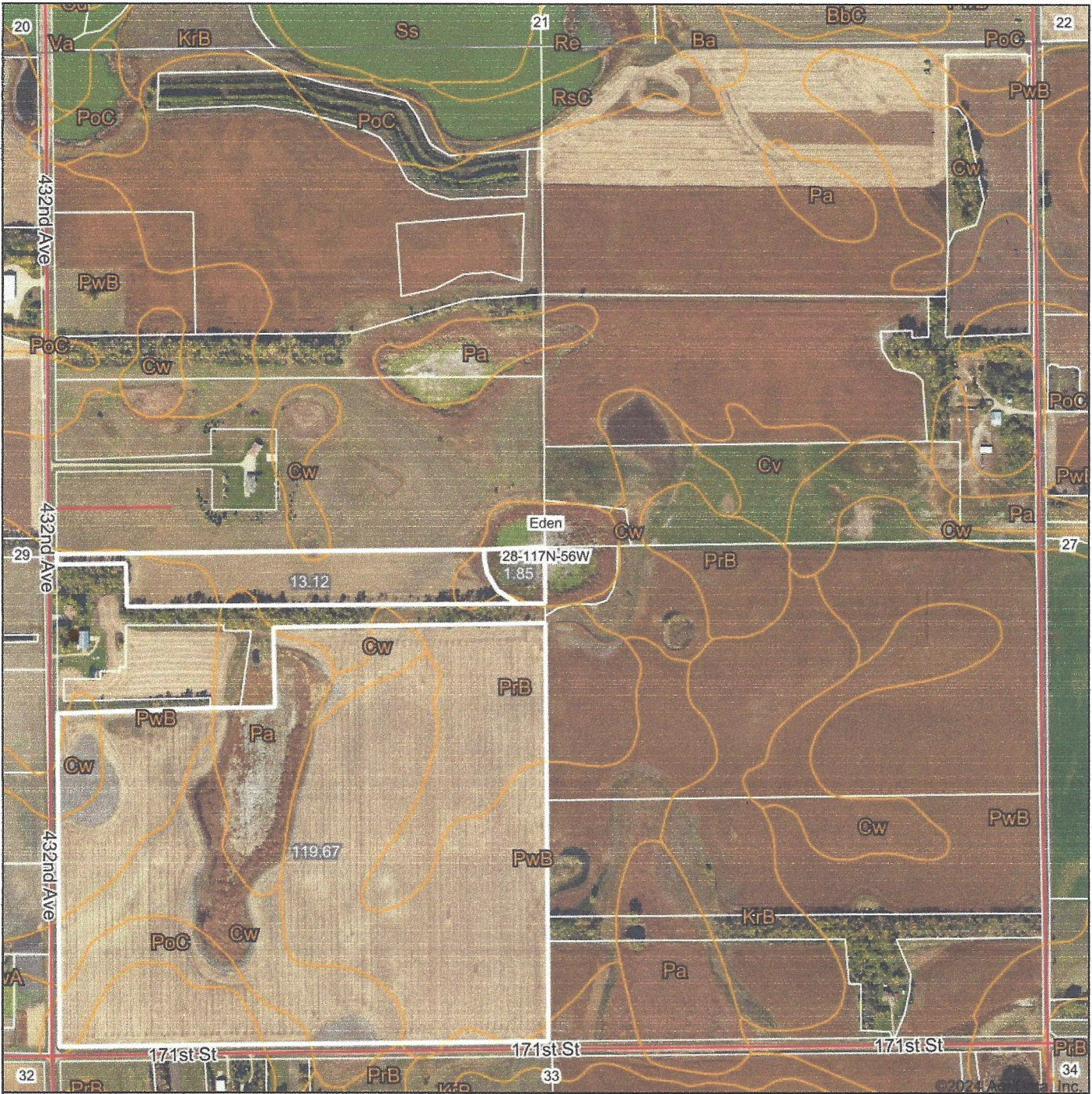
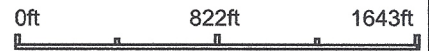


Aerial Map



Boundary Center: 44° 54' 34.25, -97° 34' 12.81



28-117N-56W
Clark County
South Dakota



10/28/2024

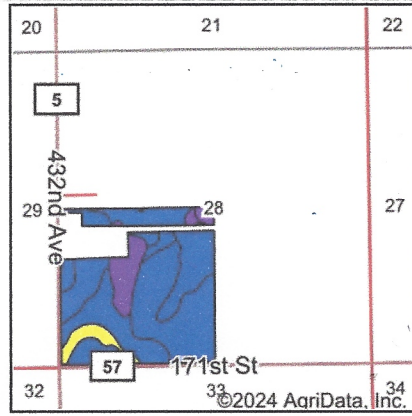
Maps Provided By:



© AgriData, Inc. 2023 www.AgriDataInc.com

Field borders provided by Farm Service Agency as of 5/21/2008.

Soils Map



State: **South Dakota**
 County: **Clark**
 Location: **28-117N-56W**
 Township: **Eden**
 Acres: **134.64**
 Date: **10/29/2024**







Maps Provided By:

 CUSTOMIZED ONLINE MAPPING
 © AgriData, Inc. 2023 www.AgriDataInc.com



Soils data provided by USDA and NRCS.

Area Symbol: SD025, Soil Area Version: 26

Code	Soil Description	Acres	Percent of field	Non-Irr Class Legend	Non-Irr Class *c	Productivity Index	Alfalfa hay Tons	Corn Bu	Soybeans Bu	Spring wheat Bu	Winter wheat Bu	*n NCCPI Soybeans	
PwB	Poinsett-Waubay silty clay loams, 1 to 6 percent slopes	62.07	46.0%		Ile	89						72	
PrB	Poinsett-Rusklyn-Waubay silty clay loams, 1 to 6 percent slopes	26.48	19.7%		Ile	84						69	
Cw	Cubden-Tonka silty clay loams, coteau, 0 to 2 percent slopes	24.34	18.1%		Ils	71						45	
Pa	Parnell silty clay loam	13.96	10.4%		Vw	31		26	10	4	1	4	
PoC	Poinsett-Rusklyn silty clay loams, 6 to 9 percent slopes	7.36	5.5%		Ive	68	2.5	58	22	30	33	53	
Cu	Cubden silty clay loam, 0 to 2 percent slopes	0.43	0.3%		Ils	77						61	
Weighted Average						2.42	77.6	0.1	5.9	2.2	2.1	1.9	*n 58.4

*n: The aggregation method is "Weighted Average using all components"

*c: Using Capabilities Class Dominant Condition Aggregation Method

Soils data provided by USDA and NRCS.