

# Leatherwood Road | 50.97 ± Acres



## For Sale

\$375,000

## About the Property

Tranquil 50-acre property with a creek, pond, trails, and hilltop views – Just over an hour from Nashville. Ideal for building your dream home or retreat, this property features flat, build-able land with Leatherwood Creek running along the tree line.

The front of the property features approx. 6.4 acres of flat build-able land with over 380 feet of road frontage.

Venture beyond the creek into the woods, where trails provide easy access to the hill tops, pond, and open clearings. Whether you're hiking, hunting, or simply enjoying the views, this property offers endless opportunities to connect with nature in complete privacy and seclusion in your own backyard.

Distance To:

Dickson, TN: 30 Minutes

Clarksville: 35 Minutes

Nashville: 1 Hour 20 Minutes

## Facts and Features

Dickson County, Tennessee

0 Leatherwood Ro, Cumberland Furnace, TN 37051

50.97 ± Acres

Best Use: Residential, Recreational, Investment



**SOUTH MAIN  
LAND REALTY**

**Hayden Reed**

Office: (256) 383-8990 | Cell: (256) 740-2494  
soldbyhayden@southmainrealty.com

Stephan Tomlinson, Broker





Maxar, Microsoft

**Legend**

 VTS101

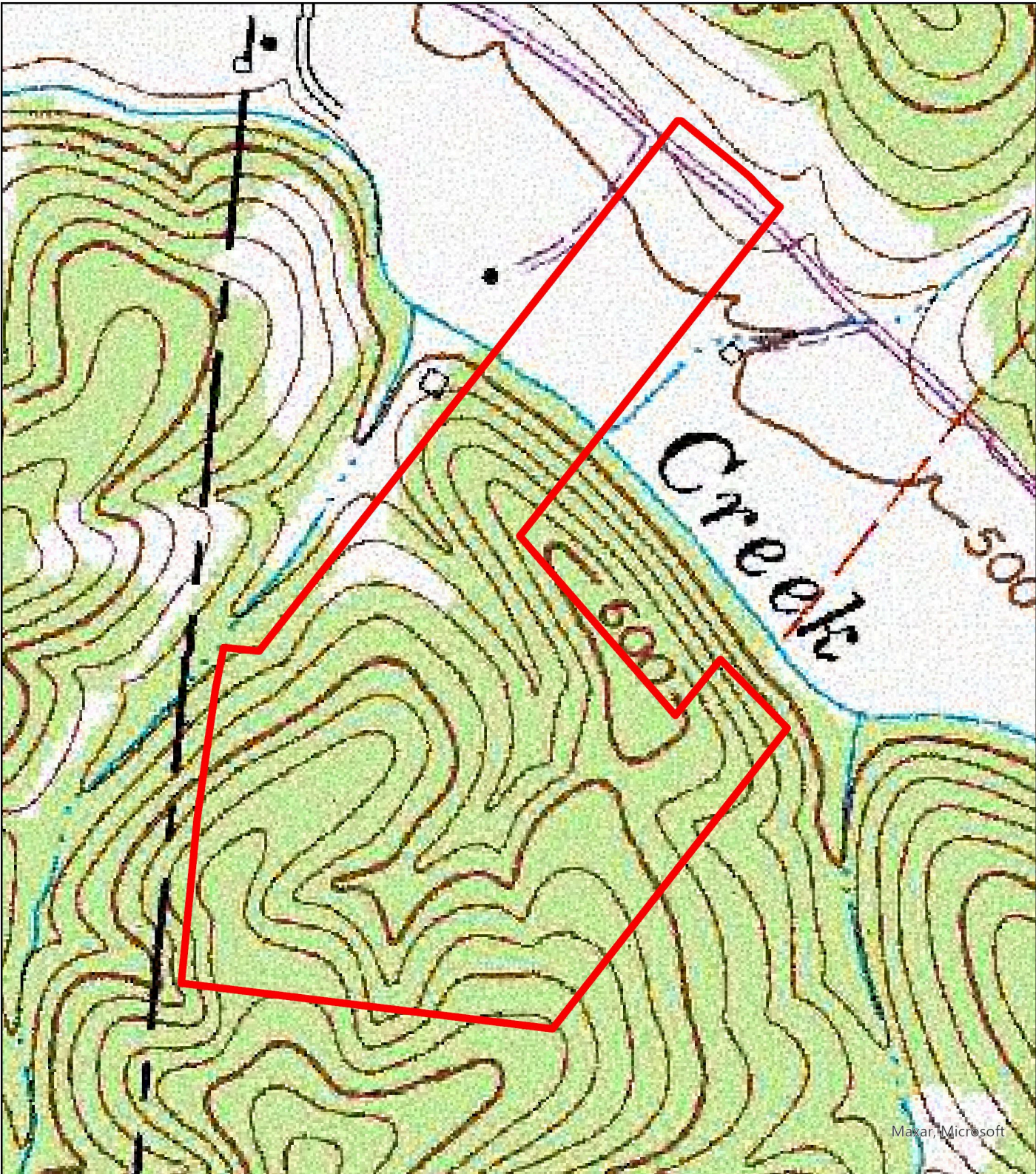
**VTS101**  
**Dickson County, TN**  
**Aerial**

South Main Land Realty | (256) 383-8990



0 325 650 Feet





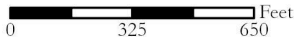
**Legend**

 VTS101

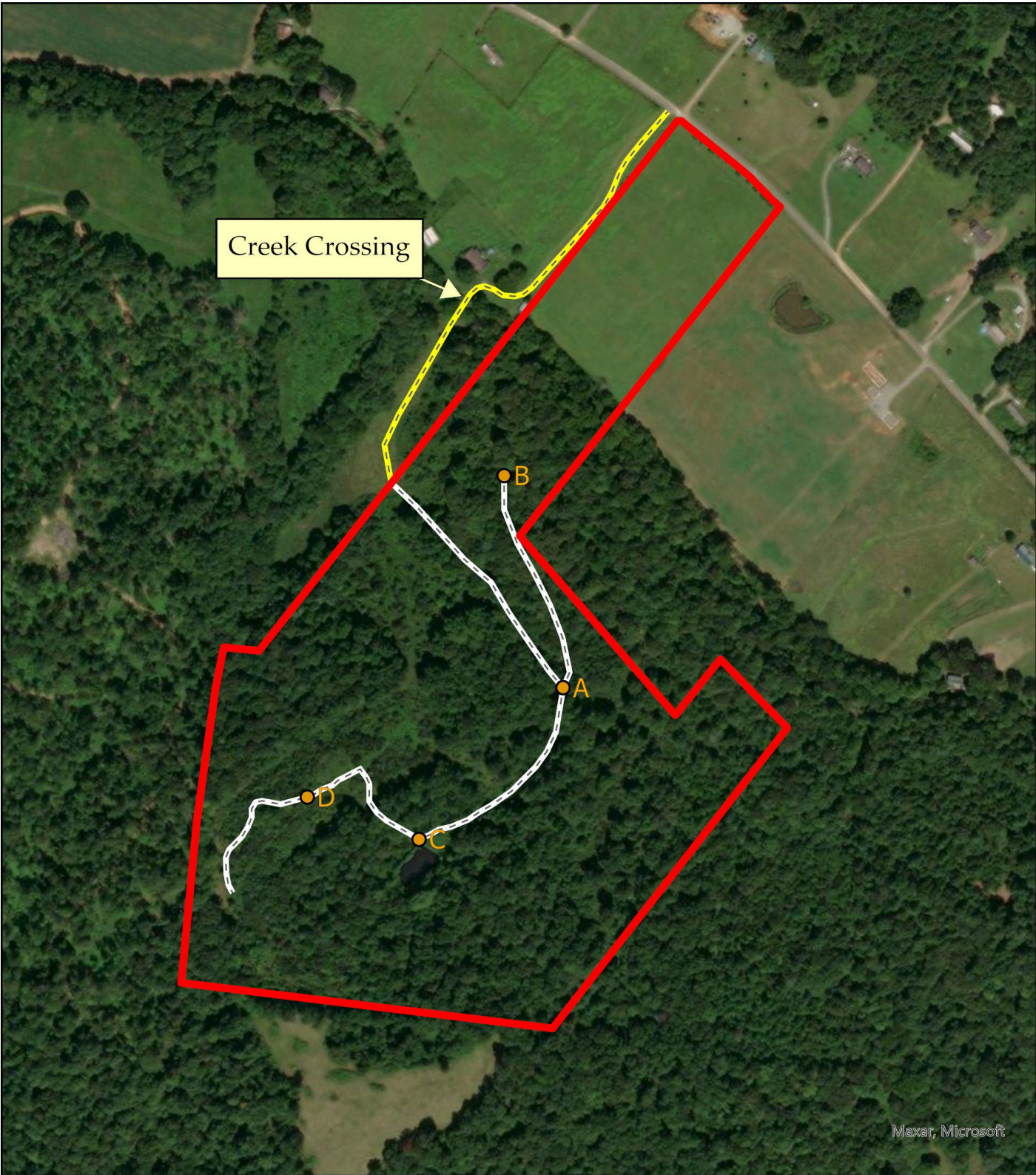
**VTS101  
Dickson County, TN  
Topo**

South Main Land Realty | (256) 383-8990







 Feet  
0 325 650





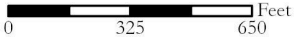
Maxar, Microsoft

**Legend**

-  VTS101
-  VTS101 Trail Markers
-  VTS101 Interior Trails
-  VTS101 Easement

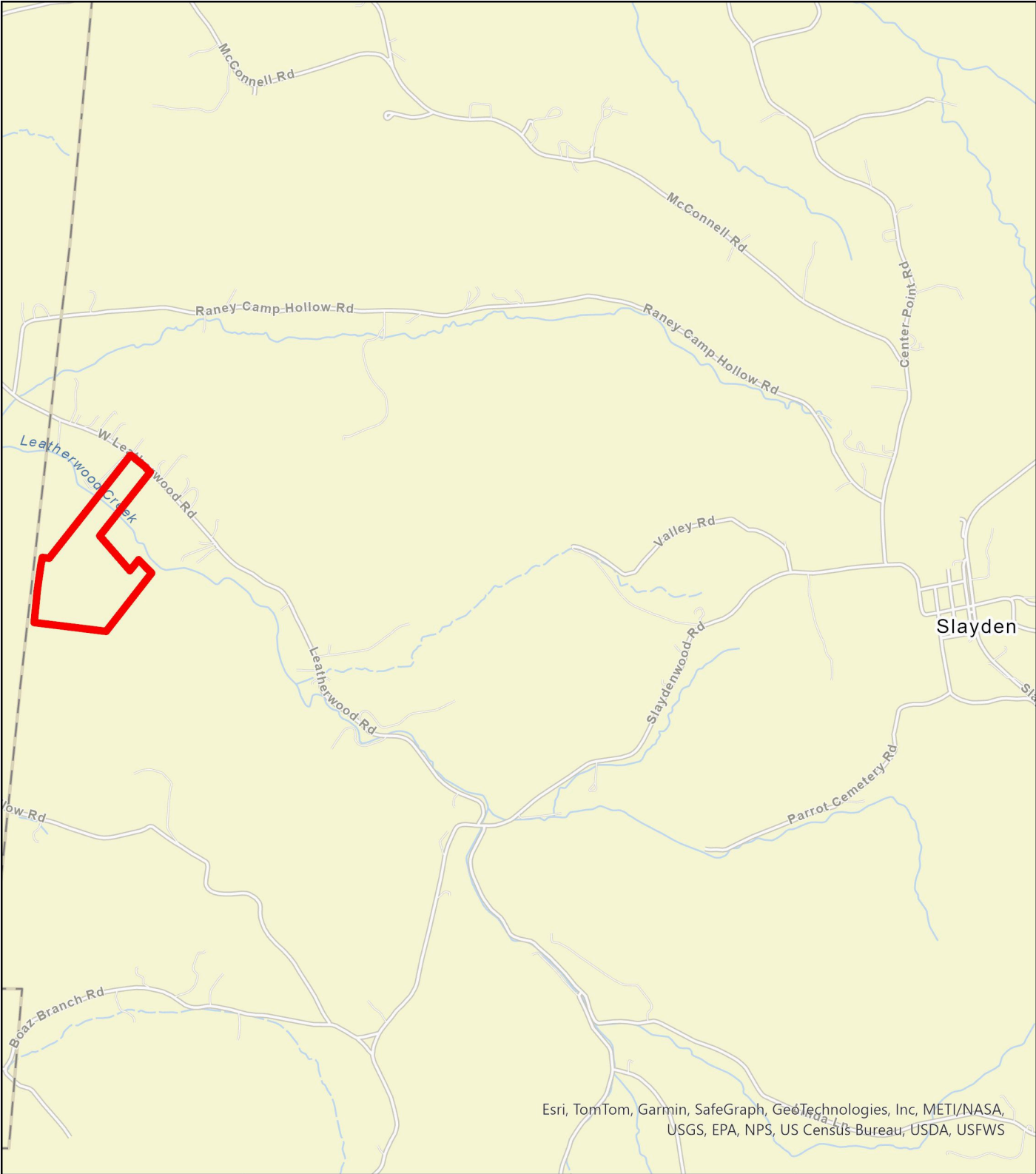
**VTS101  
Dickson County, TN  
Easement and Interior Trails**

South Main Land Realty | (256) 383-8990









Esri, TomTom, Garmin, SafeGraph, GeoTechnologies, Inc, METI/NASA, USGS, EPA, NPS, US Census Bureau, USDA, USFWS

**Legend**

 VTS101

**VTS101  
Dickson County, TN  
Local Roads**

South Main Land Realty | (256) 383-8990

