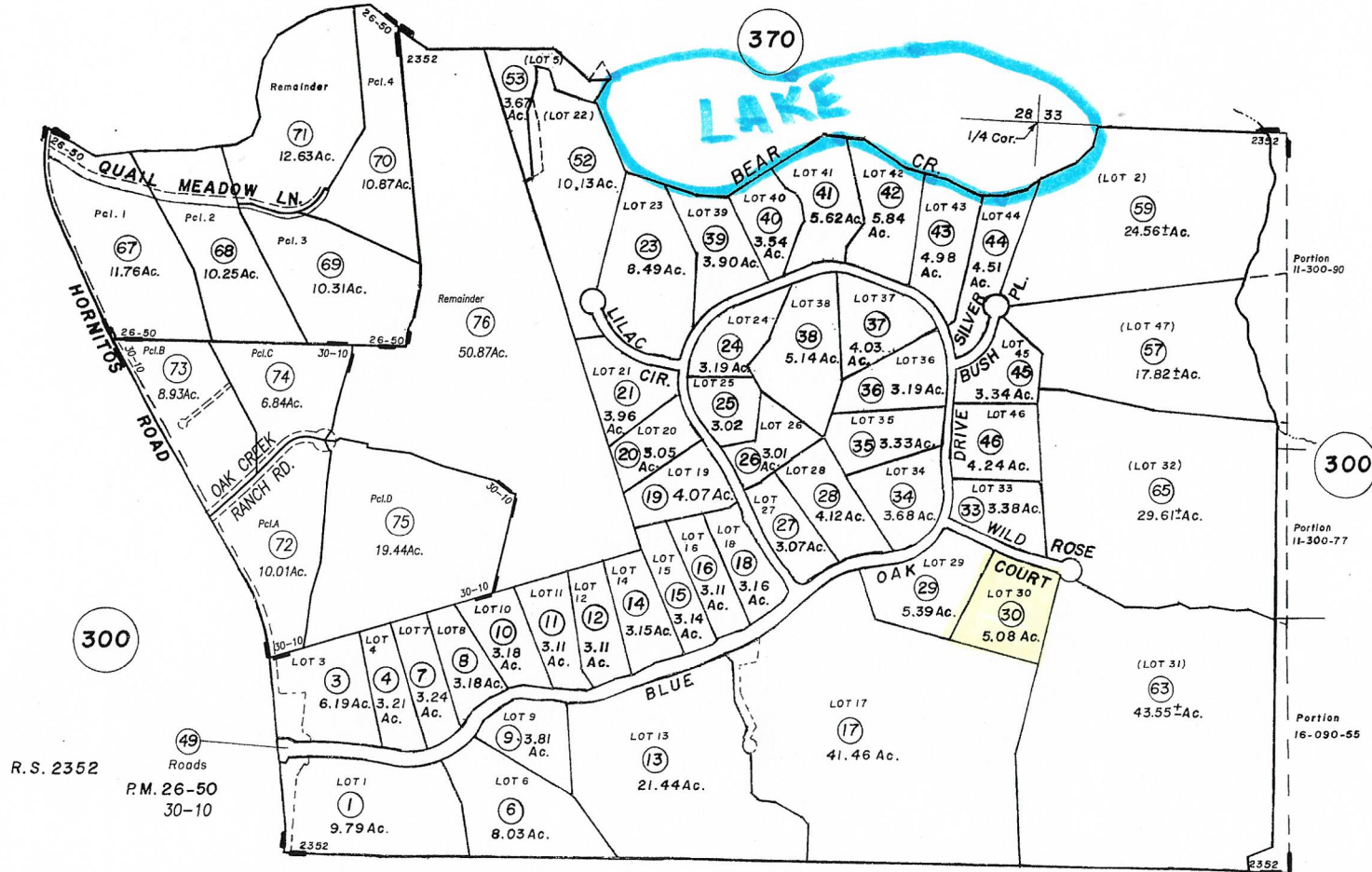


# WHISPERING OAKS WEST

(Being Portion 28, 29, 32 & 33 T.5S., R.17E.,  
M.D.B. & M.)

Tax Area Code  
51000

11-380



ASSESSOR'S PLATS ARE FOR GENERAL PROPERTY LOCATION AND TAX PURPOSES ONLY. THEY MAY NOT BE USED AS A BASIS FOR LEGAL PROPERTY DESCRIPTIONS.

NOTE- Assessor's Parcel Numbers Shown in Small Circles

Assessor's Map Bk.11-Pg.380  
County of Mariposa, Calif.

2011 OCT 04 2011