

CORDER

AND ASSOCIATES, LLC



Five Mile Creek Meadow

2499 Lake Elmo Drive, Billings, MT 59105

Offered at \$675,000



Presented Exclusively by
Pam Amundsen, REALTOR®

406-622-3224 office
406-208-0630 cell
Pam@CorderLand.com



Property Information

Lot Size: 32.554 Deeded Acres

Taxes: \$150.54 (2021)

Legal: TRAP CLUB SUB (21), S10, T10 N, R26 E, LOT 1, (21)

Utilities: Power in proximity

Covenants/HOAs: None

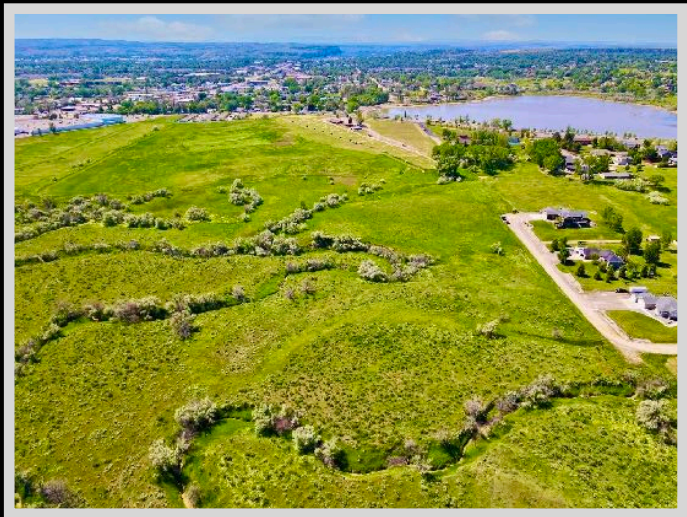
Elevation: 3,100 ft.

Zoning: A-Agriculture 10 acres and over

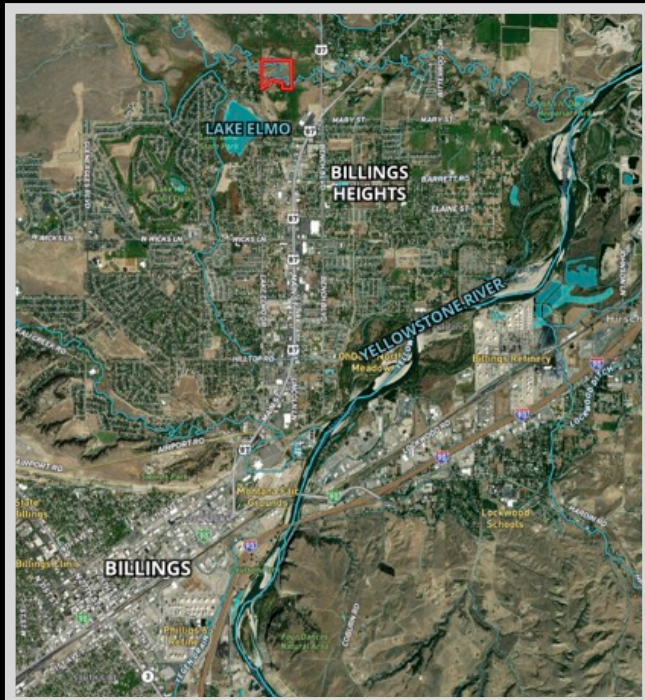
Waterfront: Five Mile Creek

Executive Summary

Sprawling on 32.554 acres, this property lies just beyond the energetic tempo of Billings, Montana. Five Mile Creek twists and winds across the property allowing the constraints of urban city life to dissipate and be replaced by boundless freedom! No HOAs or covenants allow for opportunity. Allow your dreams to be realized in an inspired home of your creation or a sanctuary for animals or horses. The area lies near the coveted Billings Heights bringing a rural feel to the subdivision. Walk to Lake Elmo for a scenic oasis for which to fish, swim, float, or enjoy a picnic lunch. In an ever-growing metropolis, this property offers advantages as a personal or business investment!



Experience this property virtually!



Local Area

The booming city of Billings, Montana is rapidly growing to make sure to keep the title of the largest city in Montana. As the county seat of Yellowstone County, it is considered to be the trade and distribution center for much of the state, east of the Continental Divide, Northern Wyoming, and western portions of North and South Dakota. Billings has superb shopping, delicious dining, and boisterous breweries. The city offers a range of recreational activities with 45 miles of multi-use trails for biking, hiking, or dog-walking. The city itself is situated in a beautiful area carved out by the Yellowstone River and surrounded by the majestic Rims. Billings truly has all the amenities and is immersed in history.

Area Attractions

Zoo Montana

Zoo Montana is a zoological/botanical garden, accredited arboretum, and educational facility in Billings Montana. Its mission is to educate on the conservation of wildlife throughout Montana. The zoo cares for over 80 animals including Amur Tigers, Grizzly Bears, Wolverine, River Otters, Takin, and Canada Lynx, among others, most of which are rescues.

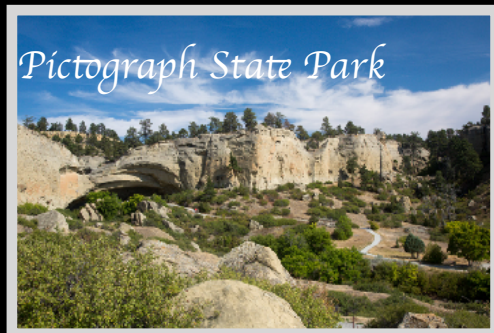


Little Bighorn Battlefield

This national monument is 15 miles southeast of Hardin, Montana and is famously where Custer took his last stand.

Pompey's Pillar

The Expedition of Lewis and Clark gives us a historical account of their journey through Montana, and at Pompey's Pillar, you can view William Clark's signature carved in stone. It is the only physical evidence left of the Expedition and will leave a lasting impression on you as well!



Pictograph State Park

Pictograph Cave State Park

Come to contemplate the origins of humankind when they were prehistoric hunters. The three main caves, Pictograph, Middle, and Ghost, display hundreds of pictographs or rock paintings with the oldest rock art being over 2000 years old!

Lake Elmo State Park

An outdoor oasis that offers swimming, hiking, boating, sailboarding, fishing, and picnicking, this 64-acre reservoir is just inside city limits!



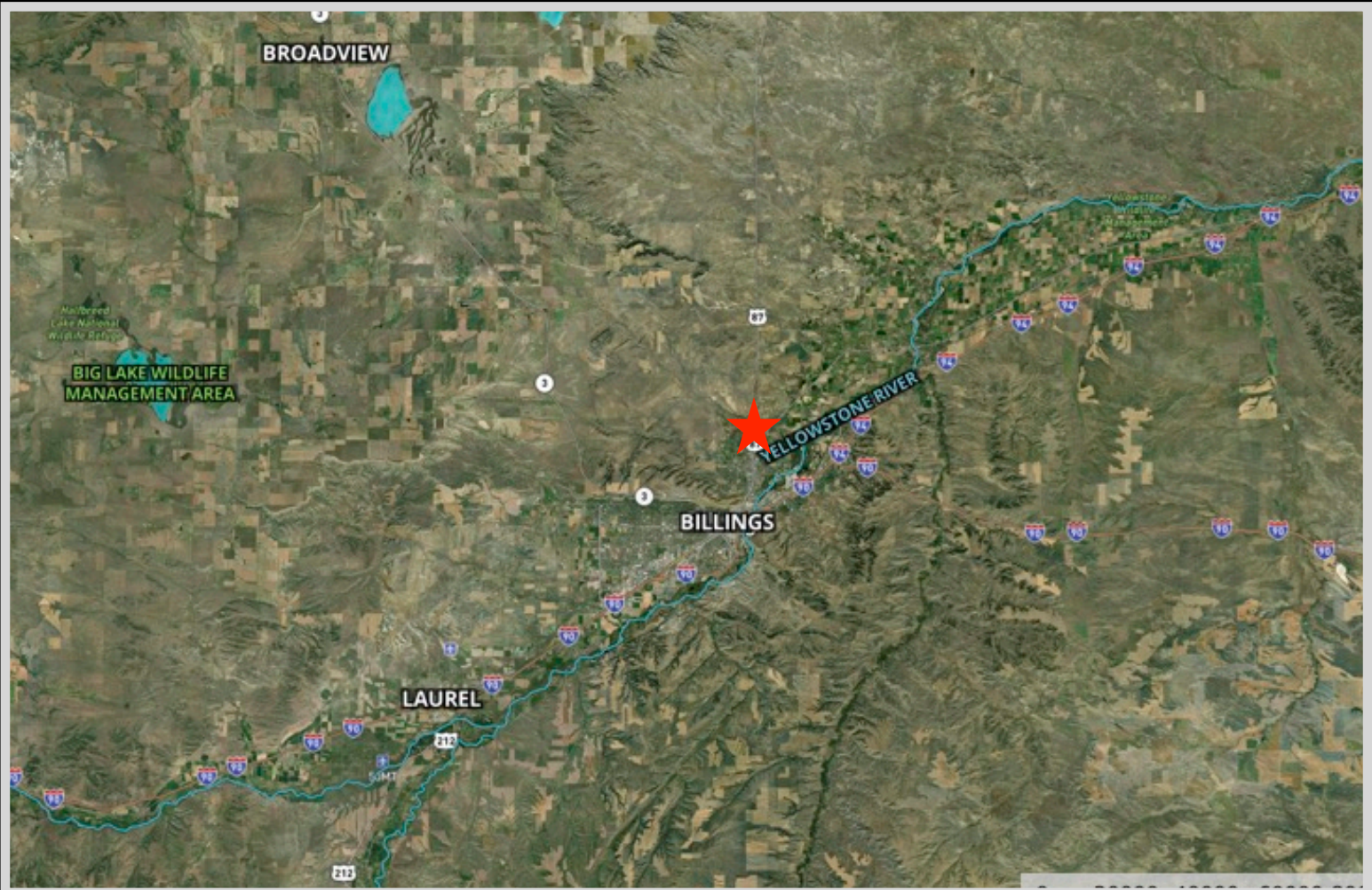
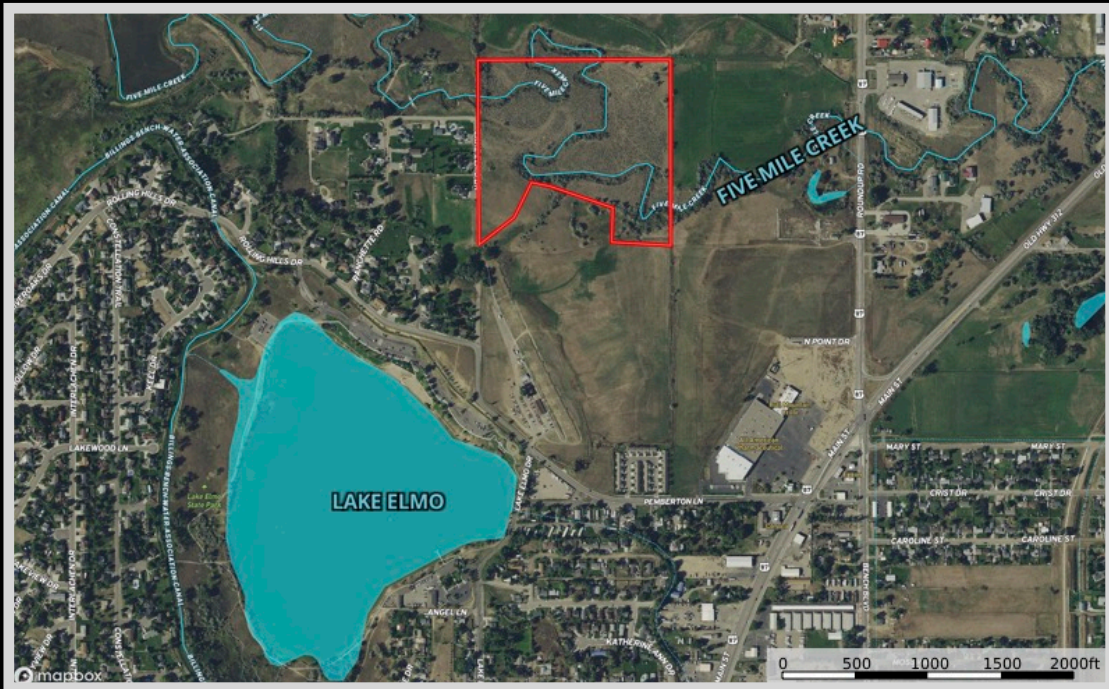
The Yellowstone River and Premiere Blue-Ribbon Fishing

This constant, unwavering river flows throughout the Yellowstone River corridor just as it has for centuries: in its natural state. It has not been dammed nor tamed and is the longest, free-flowing river as such in the lower 48 states. It meanders through a variety of scenery and various topographies from steep canyon walls to lazily flowing through farm country. Its fresh, clean waters provide fishing, floating, swimming, and rafting. The nutrient-rich areas surrounding the river are a paradise for wildlife making hunting especially good as well. Enjoy viewing wildlife such as bald eagles, elk, white-tailed deer, and black bears. Certainly, you will want to take advantage of the world-class fishing known internationally. These premier trout waters produce an abundance of big trout and native Yellowstone cutthroat trout.

In the upper half of the river, species found are cutthroat trout, rainbow trout, large whitefish, and brown trout. In the lower half or warmer waters, species found are large walleye, catfish, and sturgeon. The beauty of fishing the Yellowstone River is its length and ample space. Anglers are not crowded with others and have the length of the river to spread out. The beautiful landscape encompassing the banks enhances the whole experience. Dry fly fishing is excellent as well as sub-surface fishing with nymphs and streamers.



Property Maps



The information is provided by outside sources and deemed reliable but not guaranteed by the brokerage firm, its agents or representatives. Buyers and their agents are encouraged to conduct due diligence, and verify to their satisfaction, the information contained herein regarding property.