

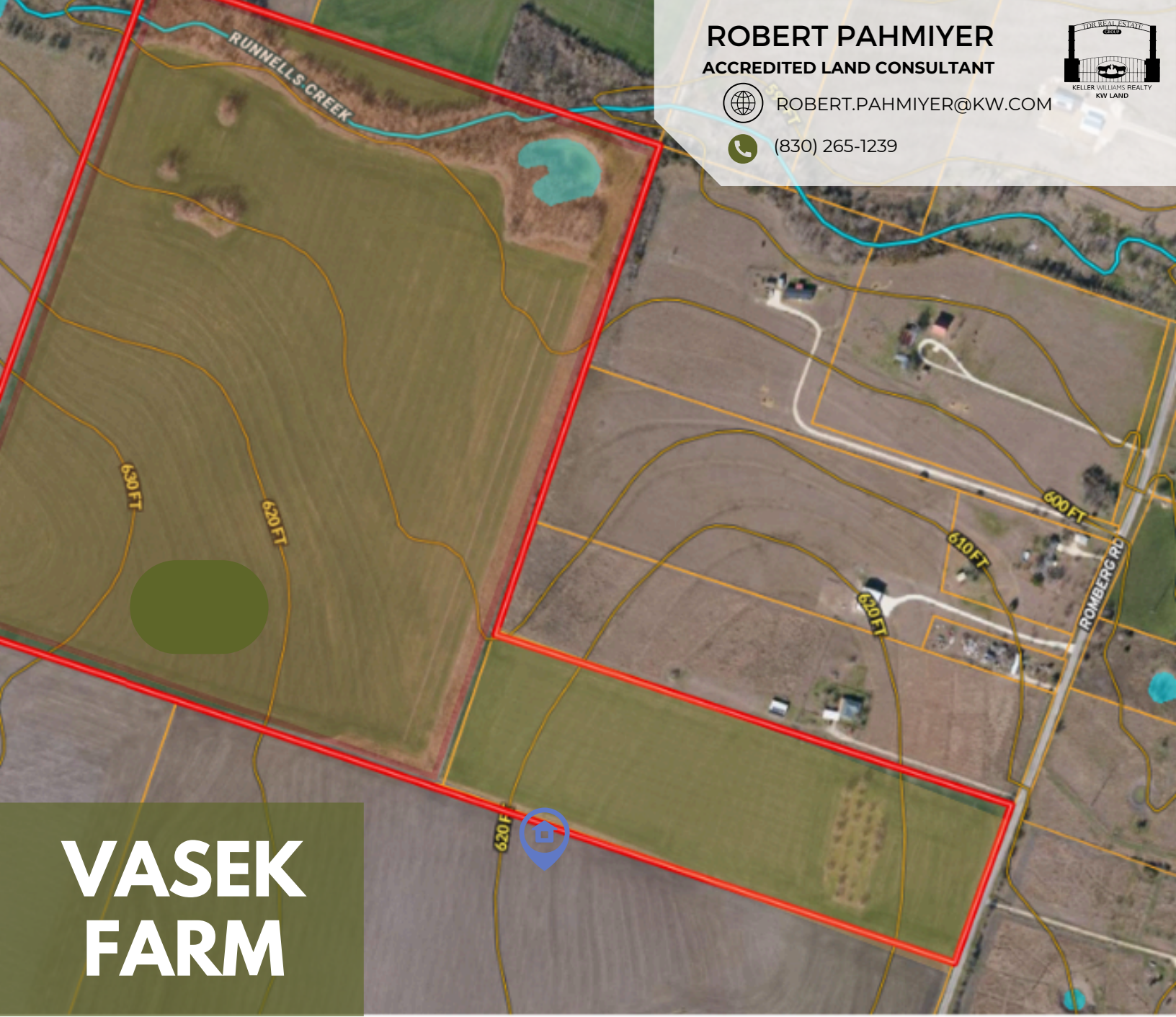
ROBERT PAHMIYER
ACCREDITED LAND CONSULTANT



ROBERT.PAHMIYER@KW.COM



(830) 265-1239



VASEK FARM

Description

Vasek Farm
13000 Romberg Road
Holland, TX 76534 (near Salado)
Bell County
89.055 Acres

89-acre potential development tract located between Holland and Salado in South Central Bell County. Located near the rapidly growing Interstate Highway 35 corridor. Roughly 9 miles to Salado and IH-35, 4 miles to Holland, 20 miles to Temple and 30 miles to Georgetown. Currently farmland with long term investment and/or development potential. Over 500 feet of frontage on Romberg Road. Located in the Armstrong Water Supply Corp CCN with nearby water lines (water line 950 ft to the north). Currently generates farm income and is under a 1-D-1 Ag valuation (low property taxes).



KW Land -- TDR Real Estate
Local Knowledge -- Global Perspective

