



All Measurements are for  
FSA Programs Only

**Wetland Determination Identifiers**

- Restricted Use
- ▼ Limited Restrictions
- Exempt from Conservation Compliance Provisions

Disclaimer: Wetland identifiers do not represent the size, shape or specific determination of the area. Refer to your original determination (CPA-026 and attached maps) for exact wetland boundaries and determinations, or contact NRCS.

**Gentry Co. FSA**

C=Corn-Yel-GR/ PP C=prevent plant corn  
 SB=Soybn-Com-GR/ PP SB=prevent soybn  
 SRW=Wheat-Soft Red Winter-GR  
 H=Mixforage-IGS-FG/ P=Mixforage-IGS-GZ  
 GLS=Mixed Forage-IGS-LS  
 CEG=Cover Crop- Cereals & other grasses  
 ALF=Alfal-FG  
 AGM=Mixed Forage, Alfalfa Grass Mix, FG  
 All crops are non-irrigated

1 inch equals 660 feet

**Program Year: 2025**

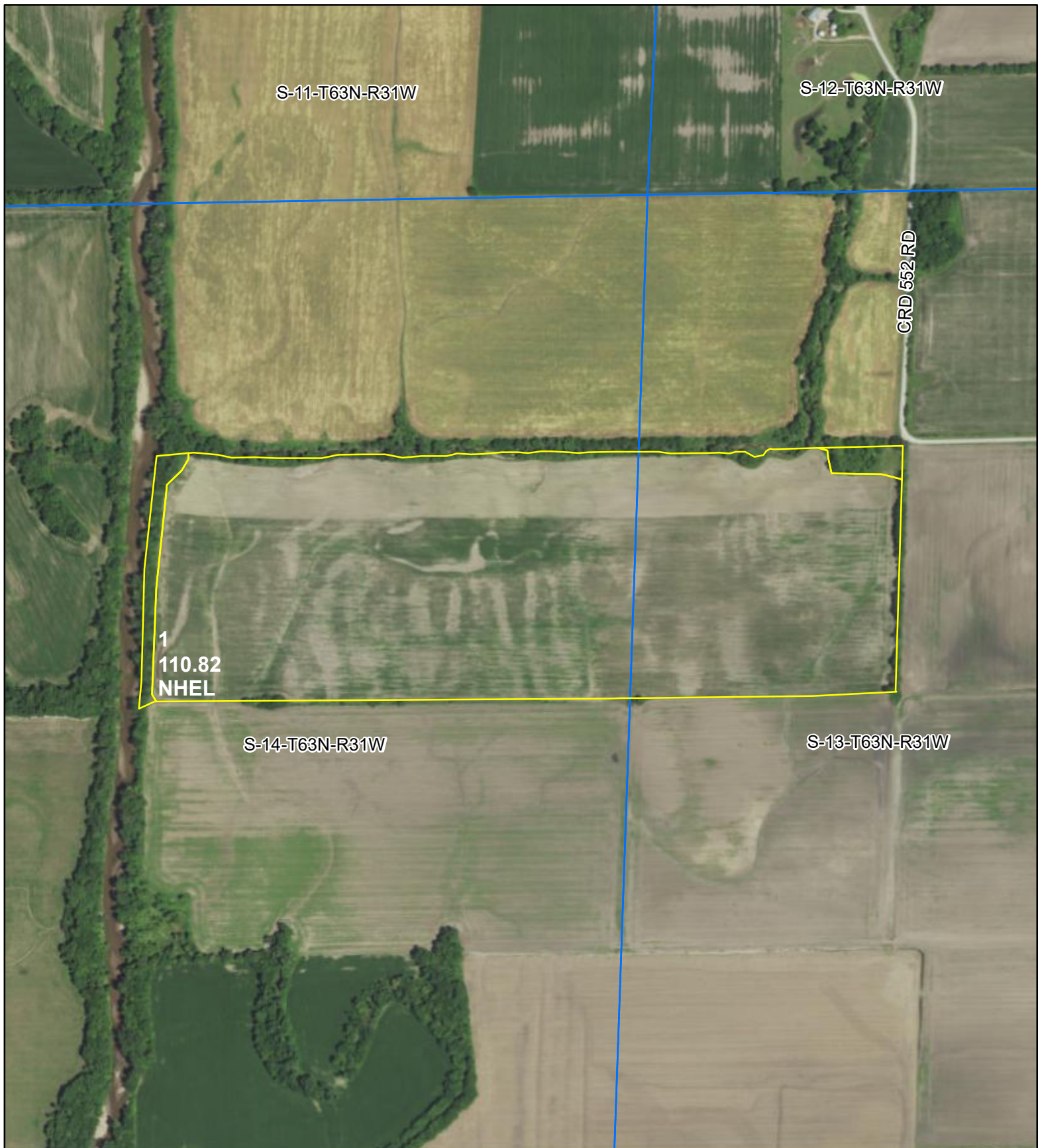
Created: 10/3/2024

Flown: 2022-6-29



- clu
- crp
- plss

**Farm 106**  
**Tract 563**



All Measurements are for  
FSA Programs Only

**Wetland Determination Identifiers**

- Restricted Use
- ▼ Limited Restrictions
- Exempt from Conservation Compliance Provisions

Disclaimer: Wetland identifiers do not represent the size, shape or specific determination of the area. Refer to your original determination (CPA-026 and attached maps) for exact wetland boundaries and determinations, or contact NRCS.

**Gentry Co. FSA**

C=Corn-Yel-GR/ PP C=prevent plant corn  
 SB=Soybn-Com-GR/ PP SB=prevent soybn  
 SRW=Wheat-Soft Red Winter-GR  
 H=Mixforage-IGS-FG/ P=Mixforage-IGS-GZ  
 GLS=Mixed Forage-IGS-LS  
 CEG=Cover Crop- Cereals & other grasses  
 ALF=Alfal-FG  
 AGM=Mixed Forage, Alfalfa Grass Mix, FG  
 All crops are non-irrigated

1 inch equals 660 feet

**Program Year: 2025**

Created: 10/3/2024

Flown: 2022-6-29



- clu
- crp
- plss

**Farm 106**  
**Tract 850**