

# Aerial Map



# McCall

AUCTIONS &  
REAL ESTATE

Maps Provided By:

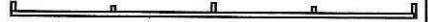
 **surety**  
CUSTOMIZED ONLINE MAPPING

© AgriData, Inc 2023 [www.AgridataInc.com](http://www.AgridataInc.com)

Boundary Center: 41° 49' 24.79, -95° 49' 53.74

**15-81N-43W**  
**Harrison County**  
**Iowa**

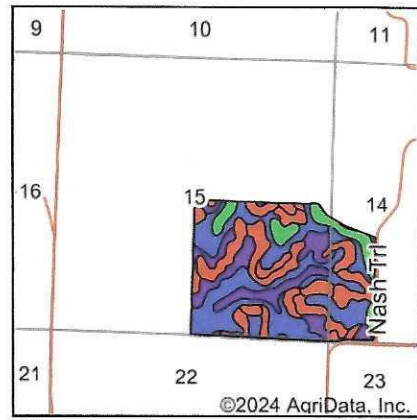
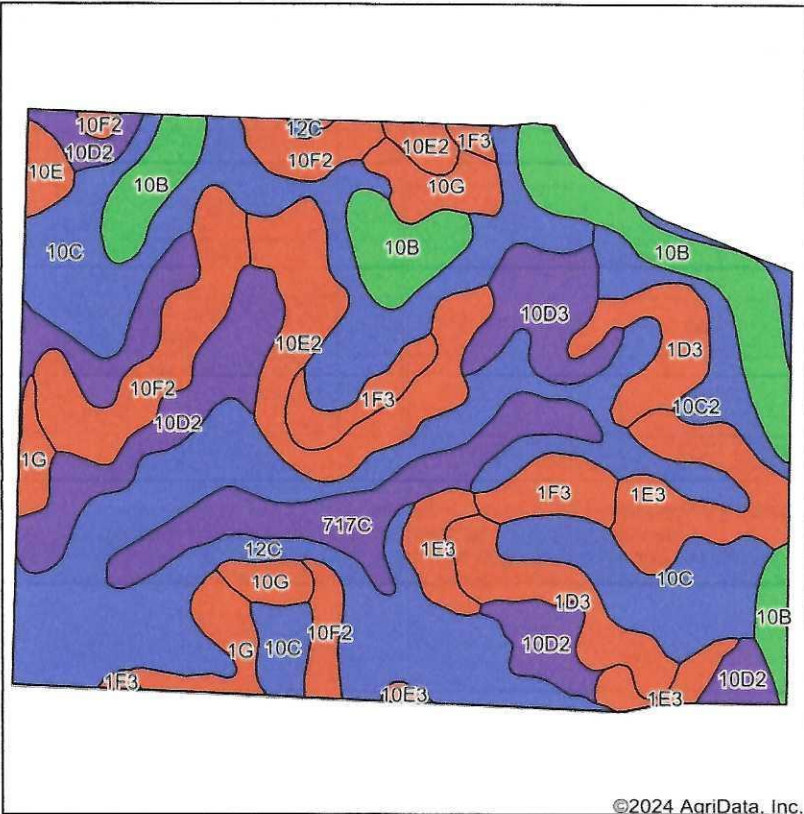
0ft 836ft 1672ft



8/22/2024

Field borders provided by Farm Service Agency as of 5/21/2008.

# Soils Map



State: **Iowa**  
 County: **Harrison**  
 Location: **15-81N-43W**  
 Township: **Allen**  
 Acres: **198.05**  
 Date: **8/22/2024**

**McCall**

AUCTIONS & REAL ESTATE

Maps Provided By:



© AgriData, Inc. 2023 www.AgridataInc.com

Soils data provided by USDA and NRCS.

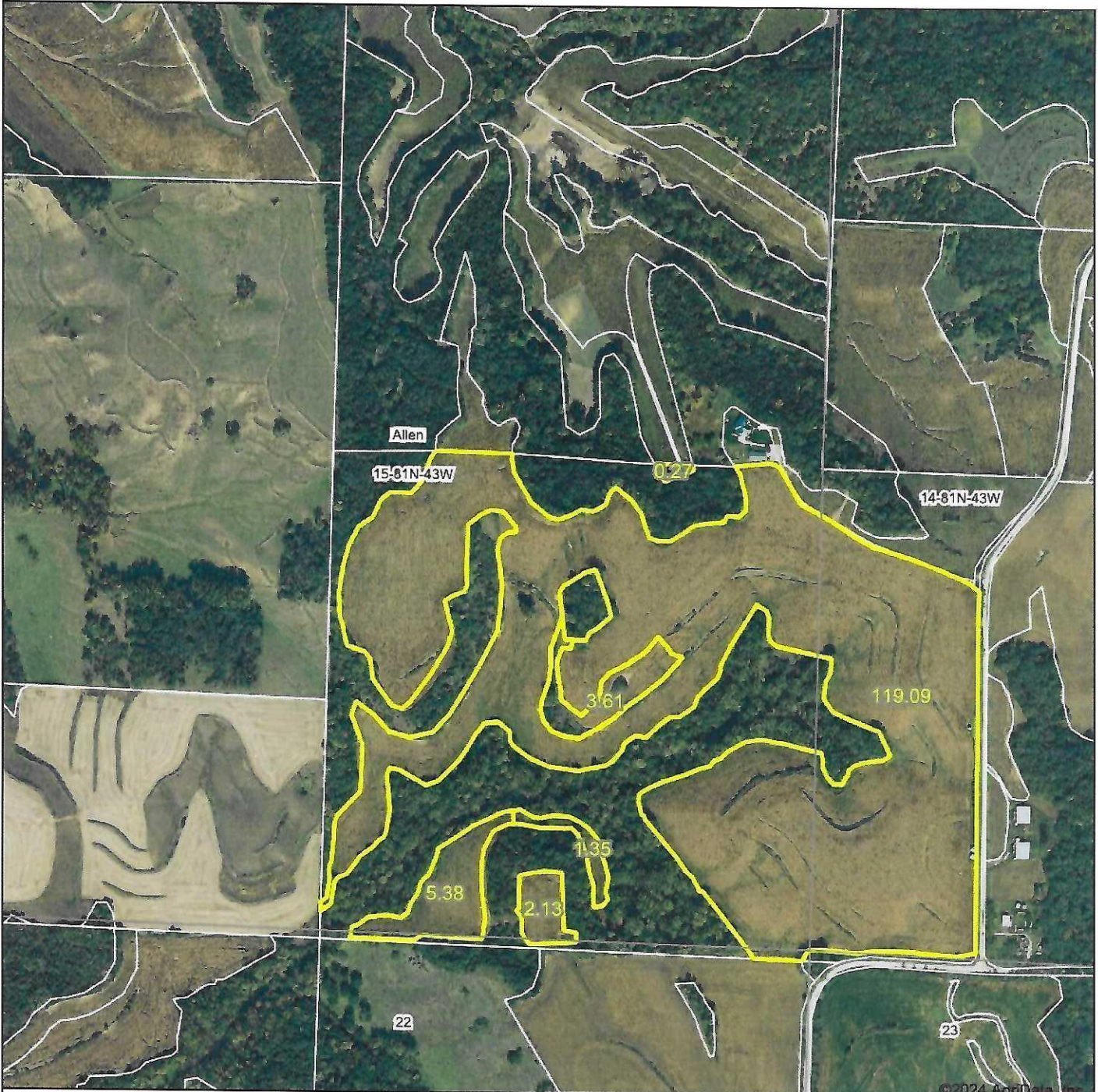
©2024 AgriData, Inc.

Area Symbol: IA085, Soil Area Version: 32

Code	Soil Description	Acres	Percent of field	CSR2 Legend	Non-Irr Class *c	Irr Class *c	*i Corn Bu	*i Soybeans Bu	CSR2**	*n NCCPI Corn	*n NCCPI Soybeans
12C	Napier silt loam, 5 to 9 percent slopes	38.83	19.5%		IIle		214.4	62.2	89	86	87
10C	Monona silt loam, 5 to 9 percent slopes	33.01	16.7%		IIle		216.0	62.6	89	86	87
10D2	Monona silt loam, 9 to 14 percent slopes, eroded	18.63	9.4%		IIle		164.8	47.8	60	76	70
10B	Monona silt loam, 2 to 5 percent slopes	18.36	9.3%		Ile	IIle	232.0	67.3	95	88	88
10F2	Monona silt loam, 20 to 30 percent slopes, eroded	13.77	7.0%		VIe		115.2	33.4	24	24	15
1E3	Ida silt loam, 14 to 20 percent slopes, severely eroded	12.35	6.2%		IVe		97.6	28.3	18	57	54
10E2	Monona silt loam, 14 to 20 percent slopes, eroded	12.11	6.1%		IVe		153.6	44.5	45	71	63
1D3	Ida silt loam, 9 to 14 percent slopes, severely eroded	10.53	5.3%		IIle		126.4	36.7	32	60	58
717C	Napier-Gullied land complex, 2 to 10 percent slopes	10.52	5.3%		IIle	IVe	88.0	25.5	55	10	10
1F3	Ida silt loam, 20 to 30 percent slopes, severely eroded	6.90	3.5%		VIe		88.0	25.5	8	17	10
10D3	Monona silt loam, 9 to 14 percent slopes, severely eroded	6.05	3.1%		IIle		171.2	49.6	53	72	61

Soils data provided by USDA and NRCS.

# Aerial Map



©2024 AgriData, Inc.

# McCall

AUCTIONS &  
REAL ESTATE

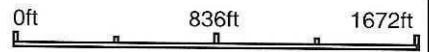
Maps Provided By:



© AgriData, Inc. 2023 www.AgriDataInc.com

Boundary Center: 41° 49' 24.75, -95° 49' 53.56

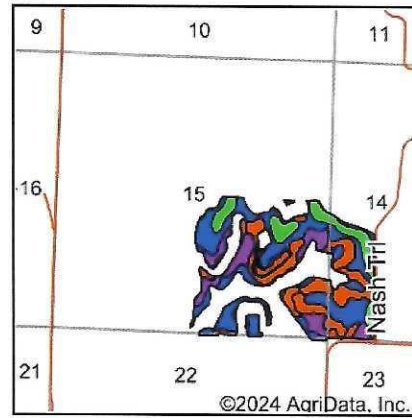
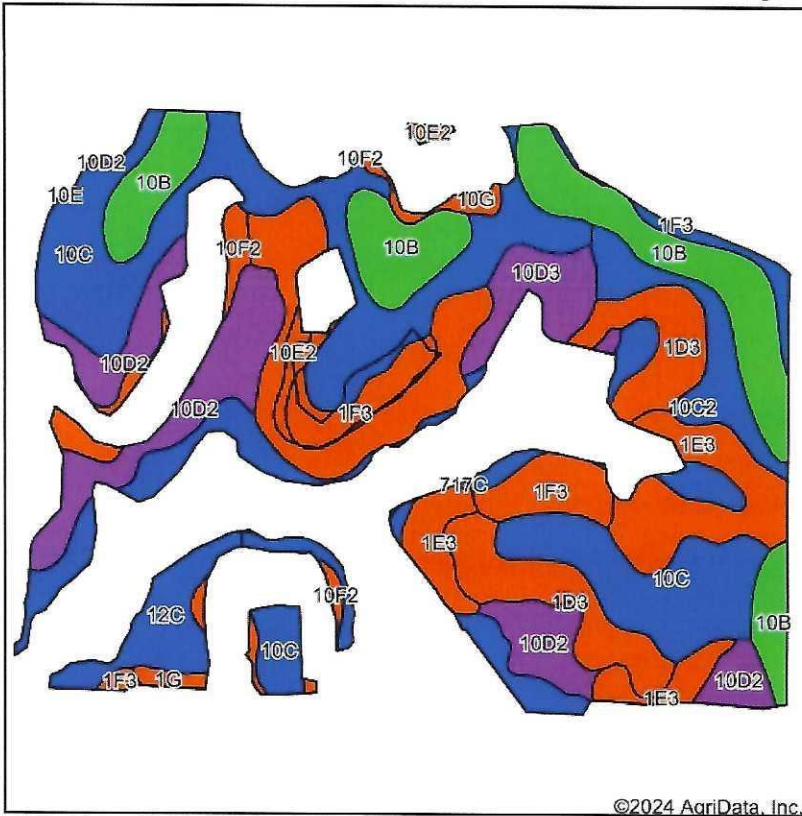
**15-81N-43W**  
**Harrison County**  
**Iowa**



10/3/2024

Field borders provided by Farm Service Agency as of 5/21/2008.

# Soils Map



State: **Iowa**  
 County: **Harrison**  
 Location: **15-81N-43W**  
 Township: **Allen**  
 Acres: **131.83**  
 Date: **10/3/2024**

**McCall**

AUCTIONS &  
 REAL ESTATE

Maps Provided By:



© AgriData, Inc. 2023 www.AgriDataInc.com



©2024 AgriData, Inc.


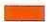
Soils data provided by USDA and NRCS.

Area Symbol: IA085, Soil Area Version: 32

Code	Soil Description	Acres	Percent of field	CSR2 Legend	Non-Irr Class *c	Irr Class *c	*i Corn Bu	*i Soybeans Bu	CSR2**	*n NCCPI Corn	*n NCCPI Soybeans
10C	Monona silt loam, 5 to 9 percent slopes	30.72	23.4%		IIIe		216.0	62.6	89	86	87
10B	Monona silt loam, 2 to 5 percent slopes	18.97	14.4%		Ile	IIIe	232.0	67.3	95	88	88
12C	Napier silt loam, 5 to 9 percent slopes	14.78	11.2%		IIIe		214.4	62.2	89	86	87
10D2	Monona silt loam, 9 to 14 percent slopes, eroded	14.56	11.0%		IIIe		164.8	47.8	60	76	70
1E3	Ida silt loam, 14 to 20 percent slopes, severely eroded	11.24	8.5%		IVe		97.6	28.3	18	57	54
1D3	Ida silt loam, 9 to 14 percent slopes, severely eroded	10.33	7.8%		IIIe		126.4	36.7	32	60	58
10E2	Monona silt loam, 14 to 20 percent slopes, eroded	9.68	7.3%		IVe		153.6	44.5	45	71	63
1F3	Ida silt loam, 20 to 30 percent slopes, severely eroded	6.35	4.8%		VIe		88.0	25.5	8	17	10
10C2	Monona silt loam, 5 to 9 percent slopes, eroded	6.25	4.7%		IIIe		211.2	61.2	86	81	76
10D3	Monona silt loam, 9 to 14 percent slopes, severely eroded	4.19	3.2%		IIIe		171.2	49.6	53	72	61
10F2	Monona silt loam, 20 to 30 percent slopes, eroded	2.65	2.0%		VIe		115.2	33.4	24	24	15

Soils data provided by USDA and NRCS.



Code	Soil Description	Acres	Percent of field	CSR2 Legend	Non-Irr Class *c	Irr Class *c	*i Corn Bu	*i Soybeans Bu	CSR2**	*n NCCPI Corn	*n NCCPI Soybeans
1G	Ida silt loam, 30 to 40 percent slopes	1.03	0.8%		VIIe		88.0	25.5	6	17	11
10G	Monona silt loam, 30 to 40 percent slopes	0.99	0.8%		VIIe		120.0	34.8	9	24	17
717C	Napier-Gullied land complex, 2 to 10 percent slopes	0.09	0.1%		IIIe	IVe	88.0	25.5	55	10	10
<b>Weighted Average</b>					<b>3.28</b>	<b>*-</b>	<b>179.1</b>	<b>51.9</b>	<b>65.1</b>	<b>*n 73.3</b>	<b>*n 70.7</b>

\*\*IA has updated the CSR values for each county to CSR2.

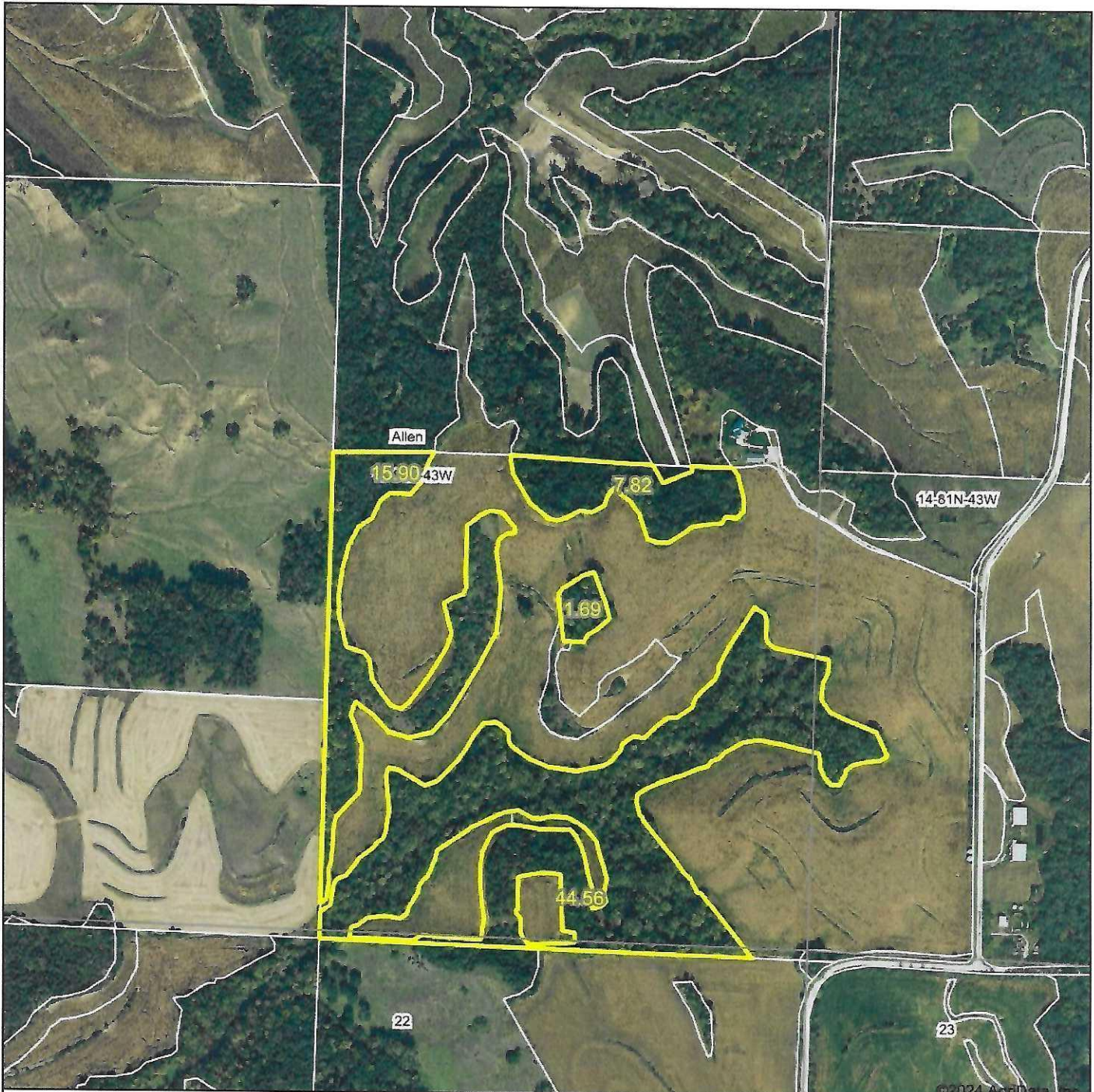
\*i Yield data provided by the ISPAID Database version 8.1.1 developed by IA State University.

\*n: The aggregation method is "Weighted Average using all components"

\*c: Using Capabilities Class Dominant Condition Aggregation Method

\*- Irr Class weighted average cannot be calculated on the current soils data due to missing data.

# Aerial Map



©2024 AgriData, Inc.

# McCall

AUCTIONS &  
REAL ESTATE

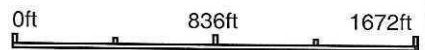
Maps Provided By:



© AgriData, Inc. 2023 www.AgrDataInc.com

Boundary Center: 41° 49' 24.75, -95° 49' 56.92

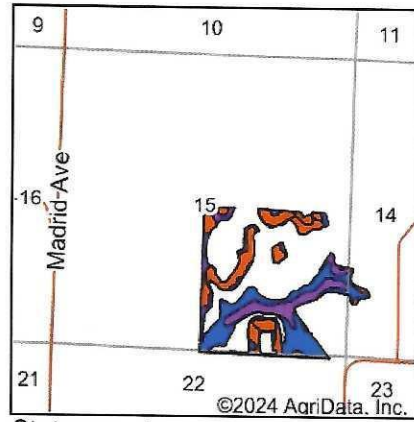
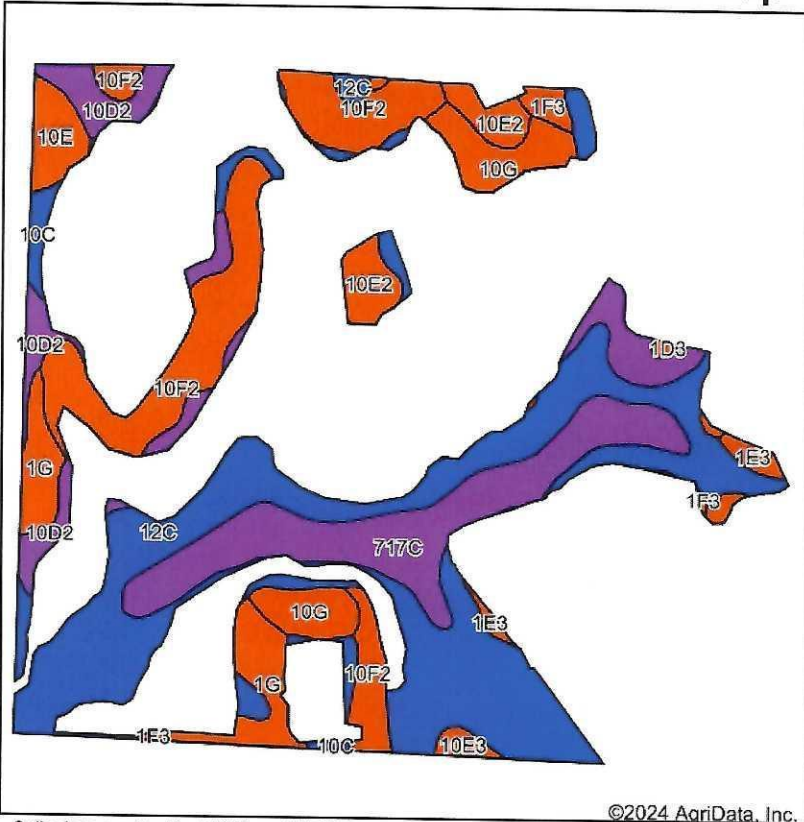
**15-81N-43W**  
**Harrison County**  
**Iowa**



10/3/2024

Field borders provided by Farm Service Agency as of 5/21/2008.

# Soils Map



State: **Iowa**  
 County: **Harrison**  
 Location: **15-81N-43W**  
 Township: **Allen**  
 Acres: **69.97**  
 Date: **10/3/2024**

**McCall**

AUCTIONS &  
 REAL ESTATE

Maps Provided By:

**surety**  
 CUSTOMIZED ONLINE MAPPING

© AgriData, Inc. 2023 www.AgrDataInc.com



©2024 AgriData, Inc.

Soils data provided by USDA and NRCS.

Area Symbol: IA085, Soil Area Version: 32

Code	Soil Description	Acres	Percent of field	CSR2 Legend	Non-Irr Class *c	Irr Class *c	*i Corn Bu	*i Soybeans Bu	CSR2**	*n NCCPI Corn	*n NCCPI Soybeans
12C	Napier silt loam, 5 to 9 percent slopes	24.79	35.4%		IIIe		214.4	62.2	89	86	87
10F2	Monona silt loam, 20 to 30 percent slopes, eroded	11.46	16.4%		VIe		115.2	33.4	24	24	15
717C	Napier-Gullied land complex, 2 to 10 percent slopes	10.44	14.9%		IIIe	IVe	88.0	25.5	55	10	10
10D2	Monona silt loam, 9 to 14 percent slopes, eroded	4.41	6.3%		IIIe		164.8	47.8	60	76	70
1G	Ida silt loam, 30 to 40 percent slopes	3.94	5.6%		VIIe		88.0	25.5	6	17	11
10G	Monona silt loam, 30 to 40 percent slopes	3.84	5.5%		VIIe		120.0	34.8	9	24	17
10C	Monona silt loam, 5 to 9 percent slopes	2.68	3.8%		IIIe		216.0	62.6	89	86	87
10E2	Monona silt loam, 14 to 20 percent slopes, eroded	2.46	3.5%		IVe		153.6	44.5	45	71	63
10D3	Monona silt loam, 9 to 14 percent slopes, severely eroded	1.87	2.7%		IIIe		171.2	49.6	53	72	61
10E	Monona silt loam, 14 to 20 percent slopes	1.59	2.3%		IVe		158.4	45.9	48	77	74
1E3	Ida silt loam, 14 to 20 percent slopes, severely eroded	1.08	1.5%		IVe		97.6	28.3	18	57	54

Soils data provided by USDA and NRCS.



Code	Soil Description	Acres	Percent of field	CSR2 Legend	Non-Irr Class *c	Irr Class *c	*i Corn Bu	*i Soybeans Bu	CSR2**	*n NCCPI Corn	*n NCCPI Soybeans		
1F3	Ida silt loam, 20 to 30 percent slopes, severely eroded	0.74	1.1%		Vle		88.0	25.5	8	17	10		
10E3	Monona silt loam, 14 to 20 percent slopes, severely eroded	0.47	0.7%		IVe		142.4	41.3	38	67	56		
1D3	Ida silt loam, 9 to 14 percent slopes, severely eroded	0.20	0.3%		IIIe		126.4	36.7	32	60	58		
<b>Weighted Average</b>							<b>4.05</b>	<b>*-</b>	<b>155.5</b>	<b>45.1</b>	<b>56.5</b>	<b>*n 54.1</b>	<b>*n 51.1</b>

\*\*IA has updated the CSR values for each county to CSR2.

\*i Yield data provided by the ISPAID Database version 8.1.1 developed by IA State University.

\*n: The aggregation method is "Weighted Average using all components"

\*c: Using Capabilities Class Dominant Condition Aggregation Method

\*- Irr Class weighted average cannot be calculated on the current soils data due to missing data.