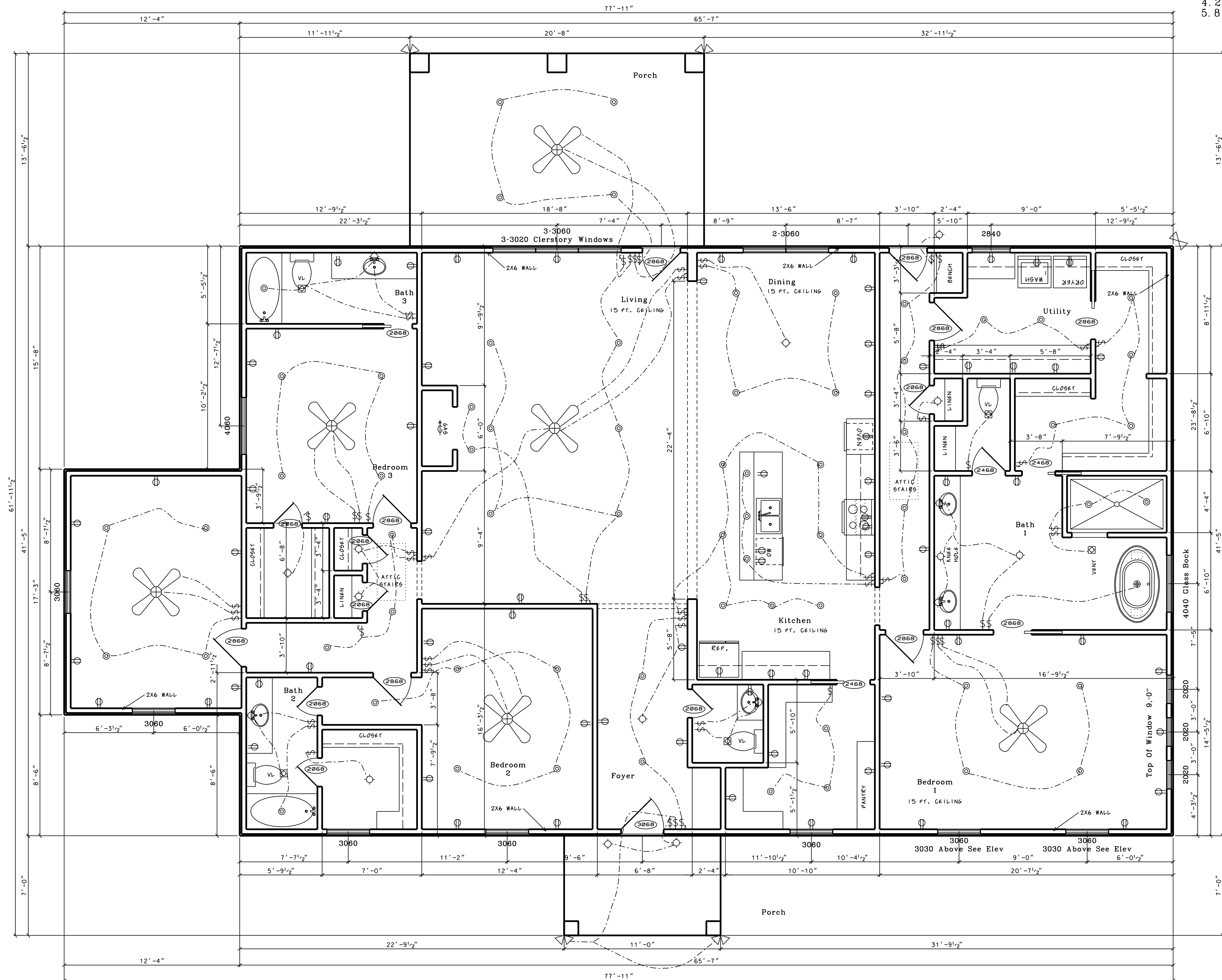


Total Living	2,928 SF
Porches	357 SF
<b>Total</b>	<b>3,285 SF</b>

- Notes:  
1. 15 Ft. Plate Line  
2. Top Windows 7'-8"  
3. 10 Ft. Ceilings Other Ceiling Heights Noted  
4. 2X6 Exterior Walls  
5. 8 Ft. Plate Line Porches



Floor Plan

Billy & Hailee Smith

DRAWINGS REPRESENT COMMON CONSTRUCTION PRACTICE AND SHOULD NOT BE CONSTRUED AS ENGINEERED

Billy & Hailee Smith



Raimund Gideon

701 Noel  
Longview, TX 75602  
(903)738-0967

DATE	DRAWN BY
1/13/21	RAI
SCALE	
1/4" = 1'-0"	
SHEET	

A / 1