



**SMALLTOWN**

HUNTING PROPERTIES  
& REAL ESTATE<sup>SM</sup>

F A R M | R A N C H

**287.5± ACRES**  
**PAYETTE COUNTY, ID**  
**\$1,850,000**

OFFICE (208) 505-9998 | [WWW.SMALLTOWNPROPERTIES.COM](http://WWW.SMALLTOWNPROPERTIES.COM)

# THE PAYETTE 287.5

## PROPERTY PROFILE

### LOCATION:

- 1310 Crest Road  
Caldwell, ID 83607
- Payette County
- 13± Miles from  
Indian Creek Plaza
- 14± Miles from Middleton
- 39± Miles from the Boise Airport

### COORDINATES:

- 43.83071, -116.73022

### TAX INFORMATION:

- \$842.60 in 2023

### PROPERTY USE:

- Agriculture
- Livestock
- Grazing
- Building Sites
- Recreation

### PROPERTY INFORMATION:

- 287.5± Acres
- 6 Building Rights
- Irrigated
- Mix of Rolling Terrain  
& Flat Ground
- Frontage on Crest Road



OSCAR EVANS, ALC | DESIGNATED BROKER  
C: 208-258-0715 | oscar@smalltownproperties.com

JASON LOWIES | REALTOR  
C: 208-880-9133 | jason.lowies@exprealty.com

5700 E Franklin Rd, Ste 120 - Nampa, ID 83687 | O: 208-505-9998 | smalltownproperties.com

*Information is believed to be accurate but not guaranteed.*



# WELCOME TO THE PAYETTE 287.5

INTRODUCING A LARGE ACREAGE TRACT WITH 6 BUILDING RIGHTS IN PAYETTE COUNTY, IDAHO. Located on Crest Road with convenient access to Middleton, Caldwell, and the Treasure Valley population centers, this 287.5± acre property is a great option for agriculture, recreation, and building sites. Of the total acreage, approximately 62 acres is irrigated with two pivots. The building rights can be used to build your compound or transfer within Payette County. You will find a combination of rolling terrain for recreation and some level ground ideal for farming.

To learn more about this unique property,  
contact Oscar Evans or Jason Lowies.



 **SMALLTOWN**  
HUNTING PROPERTIES  
& REAL ESTATE<sup>SM</sup>  
FARM | RANCH



OSCAR EVANS, ALC | DESIGNATED BROKER  
C: 208-258-0715 | oscar@smalltownproperties.com

JASON LOWIES | REALTOR  
C: 208-880-9133 | jason.lowies@exprealty.com

5700 E Franklin Rd, Ste 120 - Nampa, ID 83687 | O: 208-505-9998 | smalltownproperties.com

*Information is believed to be accurate but not guaranteed.*



287.5± ACRES    PAYETTE COUNTY, IDAHO



**SMALLTOWN**  
HUNTING PROPERTIES  
& REAL ESTATE<sup>SM</sup>

FARM | RANCH



**OSCAR EVANS, ALC** | DESIGNATED BROKER  
C: 208-258-0715 | [oscar@smalltownproperties.com](mailto:oscar@smalltownproperties.com)

**JASON LOWIES** | REALTOR  
C: 208-880-9133 | [jason.lowies@exprealty.com](mailto:jason.lowies@exprealty.com)

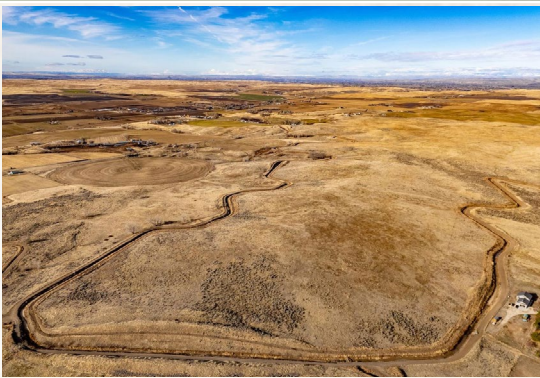
5700 E Franklin Rd, Ste 120 - Nampa, ID 83687 | O: 208-505-9998 | [smalltownproperties.com](http://smalltownproperties.com)

*Information is believed to be accurate but not guaranteed.*



287.5± ACRES

PAYETTE COUNTY, IDAHO



**SMALLTOWN**  
HUNTING PROPERTIES  
& REAL ESTATE<sup>SM</sup>

FARM | RANCH



**OSCAR EVANS, ALC** | DESIGNATED BROKER  
C: 208-258-0715 | [oscar@smalltownproperties.com](mailto:oscar@smalltownproperties.com)

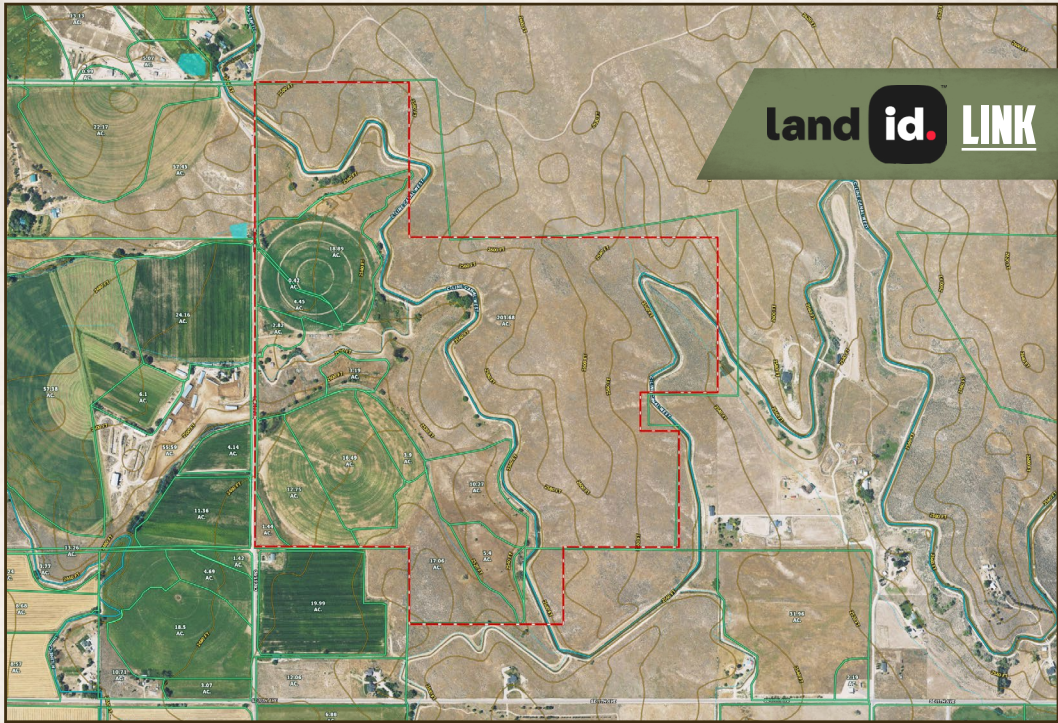
**JASON LOWIES** | REALTOR  
C: 208-880-9133 | [jason.lowies@exprealty.com](mailto:jason.lowies@exprealty.com)

5700 E Franklin Rd, Ste 120 - Nampa, ID 83687 | O: 208-505-9998 | [smalltownproperties.com](http://smalltownproperties.com)

*Information is believed to be accurate but not guaranteed.*



land id. LINK



Directions From I84 Exit 17: Travel east on Oasis Road. Go north on Crest Road.

[LINK TO GOOGLE MAP DIRECTIONS](#)



**SMALLTOWN**  
HUNTING PROPERTIES  
& REAL ESTATE<sup>SM</sup>  
FARM | RANCH



OSCAR EVANS, ALC | DESIGNATED BROKER  
C: 208-258-0715 | oscar@smalltownproperties.com

JASON LOWIES | REALTOR  
C: 208-880-9133 | jason.lowies@exprealty.com