

THE SYCAMORE FARM

873[±] ACRES, DEKALB COUNTY, ILLINOIS



MARTIN, GOODRICH & WADDELL, INC.
REAL ESTATE SERVICES

MGW.us.com
info@mgw.us.com
(815) 756-3606

Real Estate • Farm Management • Appraisals • Consulting

THE SYCAMORE FARM

AERIAL MAP



Whipple Road

Moose Range Road

Plank Road

ILLINOIS
23

Sycamore

Lindgren Road

Swanson Road

THE SYCAMORE FARM

HIGHWAY MAP



THE SYCAMORE FARM

PROPERTY DETAILS

LOCATION	The subject farm is located approximately 37 miles west of Chicago O'Hare International Airport and is located primarily within the city of Sycamore. Nearby cities include: DeKalb (4 1/4 miles southwest), Elgin (11 miles east), and St. Charles (15 miles southeast).
FRONTAGE	There is approximately 1 1/2 miles of road frontage on Plank Road, 1/2 mile on Lindgren Road, 5/16 mile on Moose Range Road, and 1/8 mile on Whipple Road.
MAJOR HIGHWAYS	Illinois Route 23 is 1/2 mile west and Illinois Route 64 is 1 3/4 miles south of the property.
LEGAL DESCRIPTION	A brief legal description indicates The Sycamore Farm is located in Parts of Sections 10, 14, 15, 21, 22, and 23, Township 41 North - Range 5 East (Sycamore Township), DeKalb County, Illinois.
TOTAL ACRES	There are a total of 873.45 acres more or less, according to the DeKalb County Assessor.
TILLABLE ACRES	There are approximately 812.89 tillable acres, estimated.
SOIL TYPES	Major soil types found on this farm include: Danabrook silt loam, Elpaso silty clay loam, Catlin silt loam, and Flanagan silt loam.
TOPOGRAPHY	The topography of the subject farm is level to gently rolling.
MINERAL RIGHTS	All mineral rights owned by the seller will be transferred in their entirety to the new owner.
POSSESSION	Possession will be given at closing, subject to the terms and conditions set forth in a purchase contract.
PRICE AND TERMS	The asking price is \$21,500 per acre. The owners are seeking a cash sale. A 10% earnest money deposit should accompany any offer to purchase.
FINANCING	Mortgage financing is available from several sources. Names and addresses will be provided upon request.
GRAIN MARKETS	There are a number of grain markets located within 15 miles of The Sycamore Farm.

THE SYCAMORE FARM

PROPERTY DETAILS

TAXES	The 2023 real estate taxes totaled \$57,578.34. The tax parcel numbers are: 06-10-300-021, 06-14-300-025, 06-15-100-019, 06-15-100-021, 06-15-300-015, 06-15-400-017, 06-15-400-018, 06-15-400-019, 06-21-400-014, 06-21-400-018, 06-22-100-004, 06-22-200-010, 06-22-200-012, 06-22-200-013, 06-22-300-008, 06-22-300-010 & 06-23-100-004.
ZONING	The Sycamore Farm is zoned R-1, Single Family Residential (City of Sycamore) and A-1, Agricultural (DeKalb County).
COMMENTS	<p>Excellent location with future development potential. Property includes a house, with a large pond and established trees.</p> <p>The information in this brochure is considered accurate, but not guaranteed. For inquiries, inspection appointments, and offers, please contact Josh Waddell (815-751-0439) or Mark Mommsen (815-901-4269) at Goodrich & Waddell, Inc.</p>

THE SYCAMORE FARM

PROPERTY DETAILS

Parcel Number	Assessed Acres	2023 Taxes	Description
06-10-300-021	2.09	\$118.96	Bare land
06-14-300-025	70.82	\$3,330.42	Bare land
06-15-100-019	41.92	\$2,211.74	Bare land
06-15-100-021	40.01	\$2,408.86	Bare land
06-15-300-015	63.65	\$4,158.96	Bare land
06-15-400-017	55.62	\$2,624.36	Bare land
06-15-400-018	96.96	\$5,637.40	Bare land
06-15-400-019	69.25	\$10,478.00	Homesite, pond, farmland
06-21-400-014	0.07	\$73.46	Grass strip contiguous to subdivision
06-21-400-018	2.59	\$367.74	Grass strip contiguous to subdivision
06-22-100-004	80	\$4,378.24	Bare land
06-22-200-010	40.12	\$2,544.02	Bare land
06-22-200-012	50.25	\$3,133.74	Bare land
06-22-200-013	38.51	\$2,229.74	Bare land
06-22-300-008	103.32	\$6,847.00	Bare land, ponds, creek
06-22-300-010	23.85	\$1,555.70	Bare land
06-23-100-004	94.42	\$5,480.00	Bare land
	873.45	\$57,578.34	

THE SYCAMORE FARM

PROPERTY PHOTOS



THE SYCAMORE FARM

PROPERTY PHOTOS



THE SYCAMORE FARM

PROPERTY PHOTOS



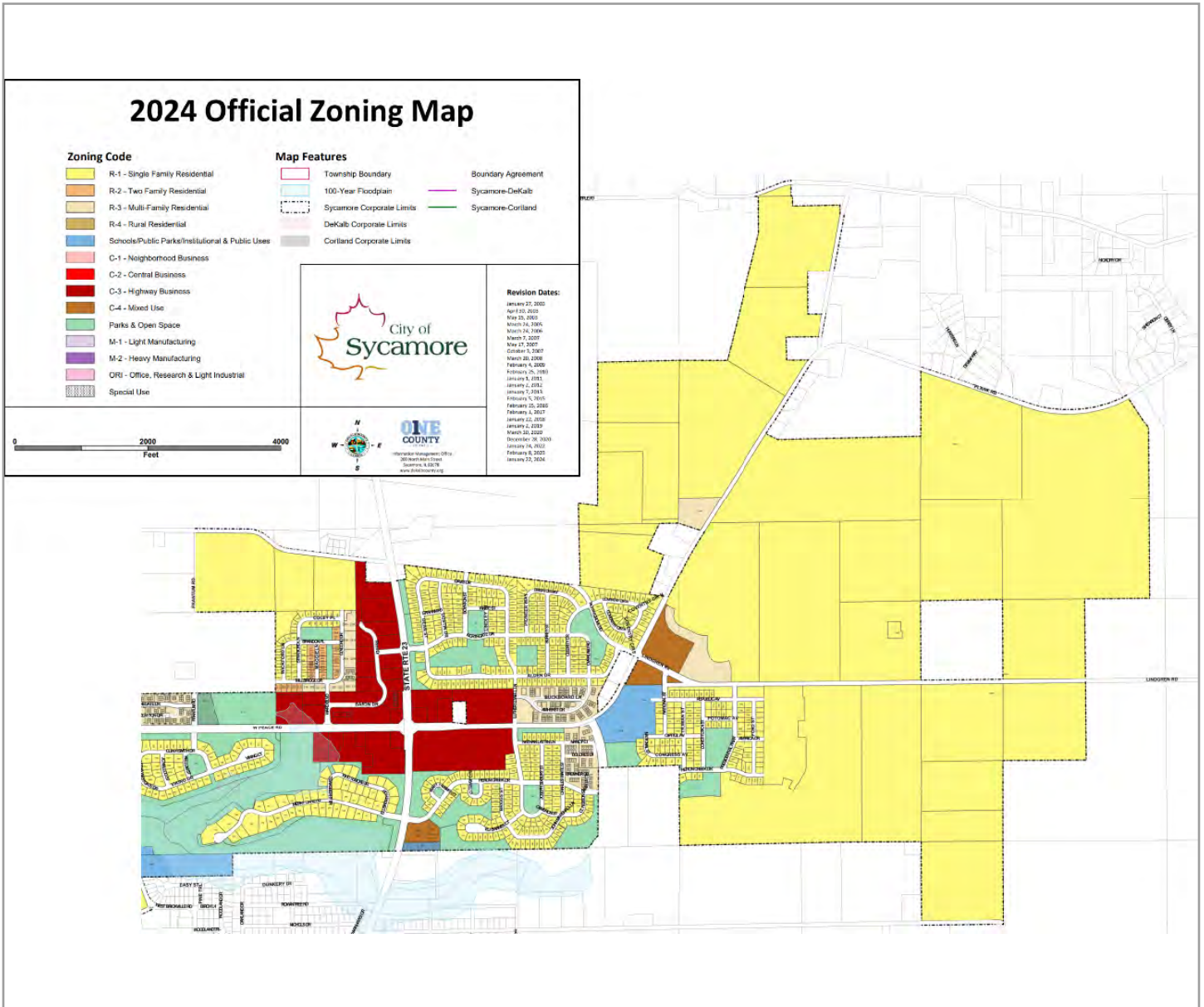
THE SYCAMORE FARM

PROPERTY PHOTOS



THE SYCAMORE FARM

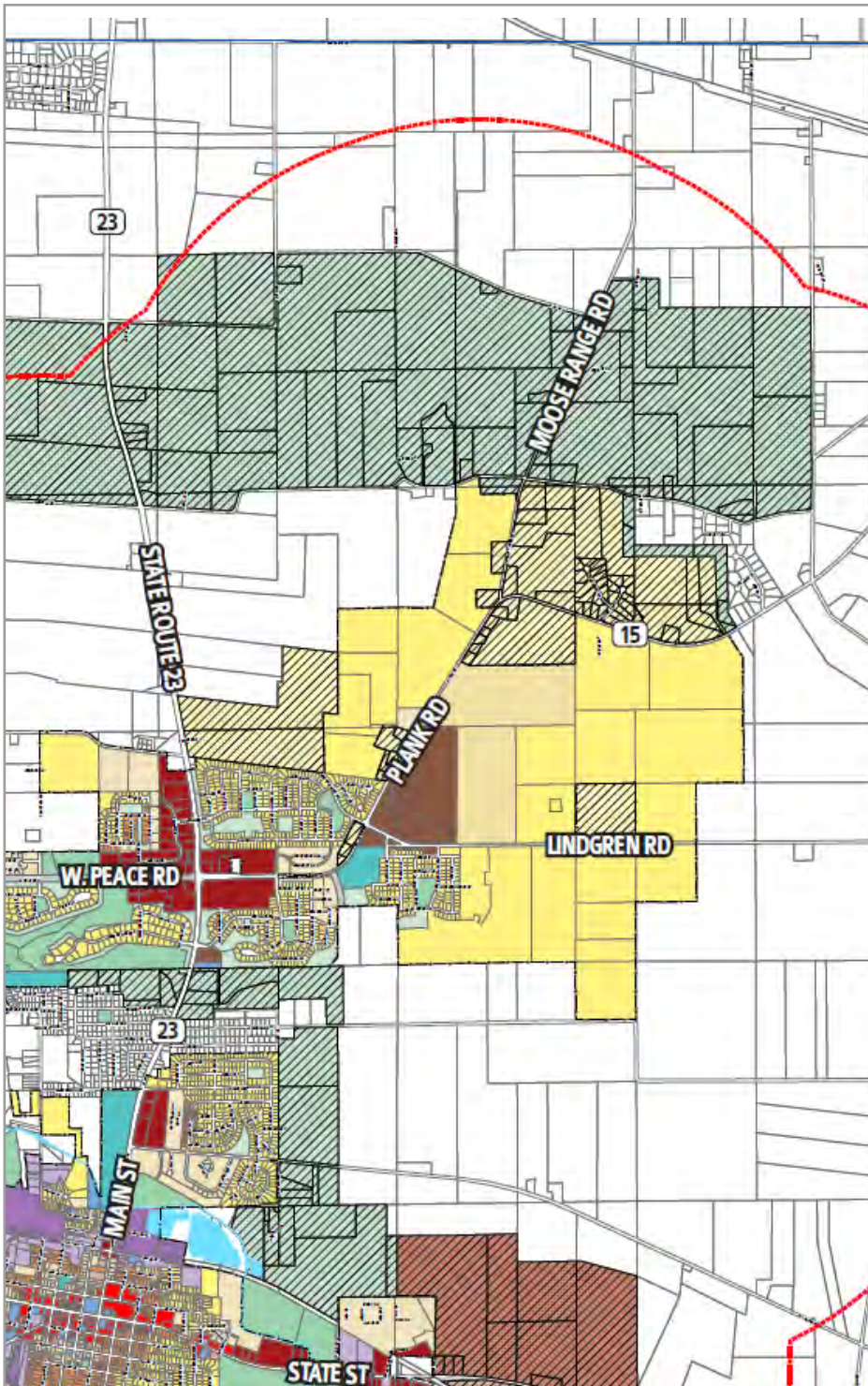
SYCAMORE ZONING MAP



The Sycamore Farm is zoned R-1, Single Family Residential (City of Sycamore) and A-1, Agricultural (DeKalb County).

THE SYCAMORE FARM

SYCAMORE FUTURE LAND USE MAP



Future Land Use Plan

EXISTING LAND USE

- R-1 Single Family Residential
- R-2 Two Family Residential
- R-3 Multi-Family Residential
- Public/Semi-Public
- Schools/Institutional
- C-1 Neighborhood Business
- C-2 Central Business
- C-3 Highway Business
- C-4 Mixed Use
- Parks
- Open Space
- M-1 Light Manufacturing
- M-2 Heavy Manufacturing
- ORI Office, Research & Light Industrial

FUTURE LAND USE

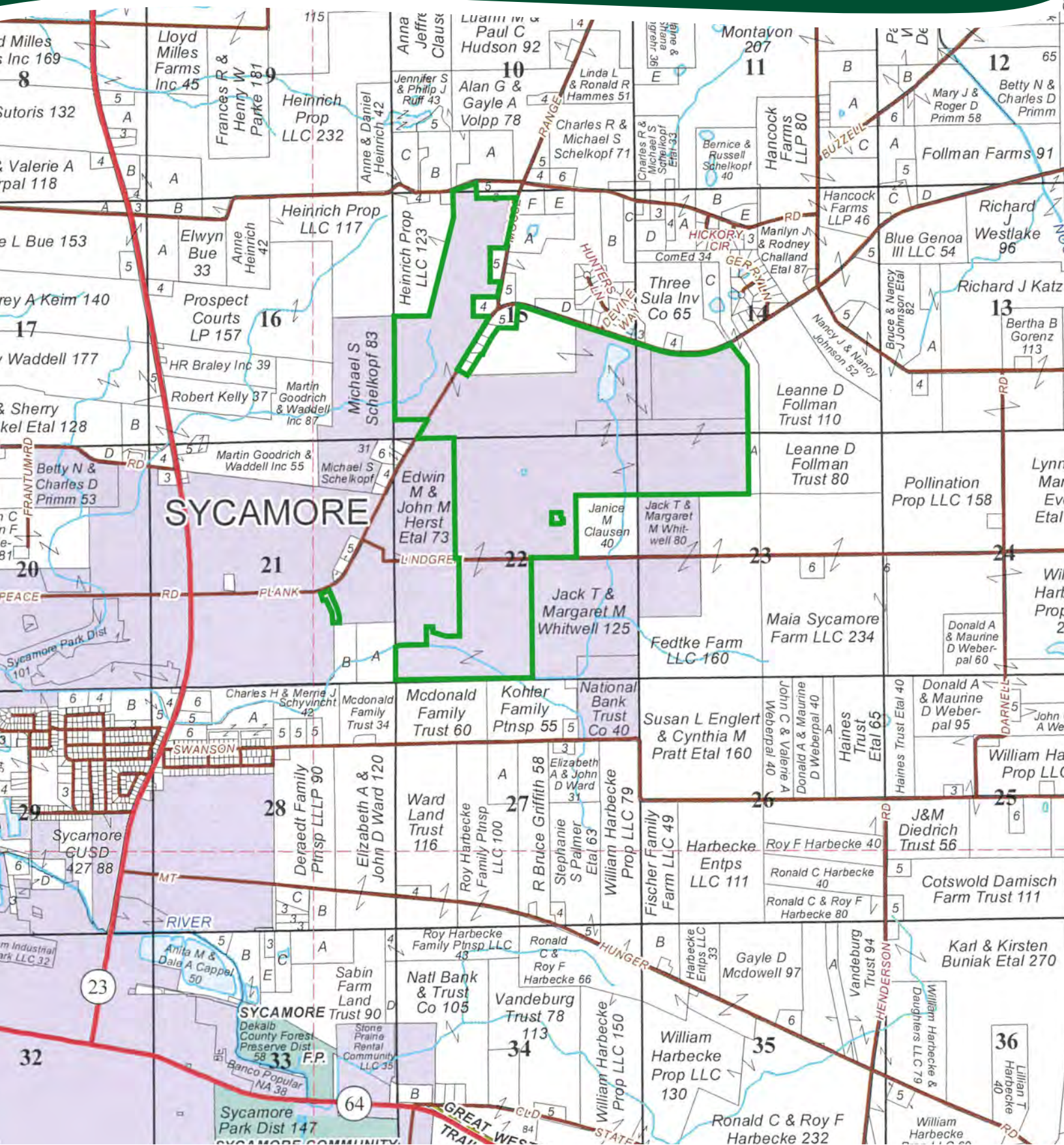
- Rural Residential
- Neighborhood Residential
- Multi-Family Residential
- Parks
- Open Space
- Green Buffer
- Commercial
- Mixed Use
- Industrial
- Office, Research & Light Industrial

BOUNDARIES

- Municipal Boundary
- Planning Boundary

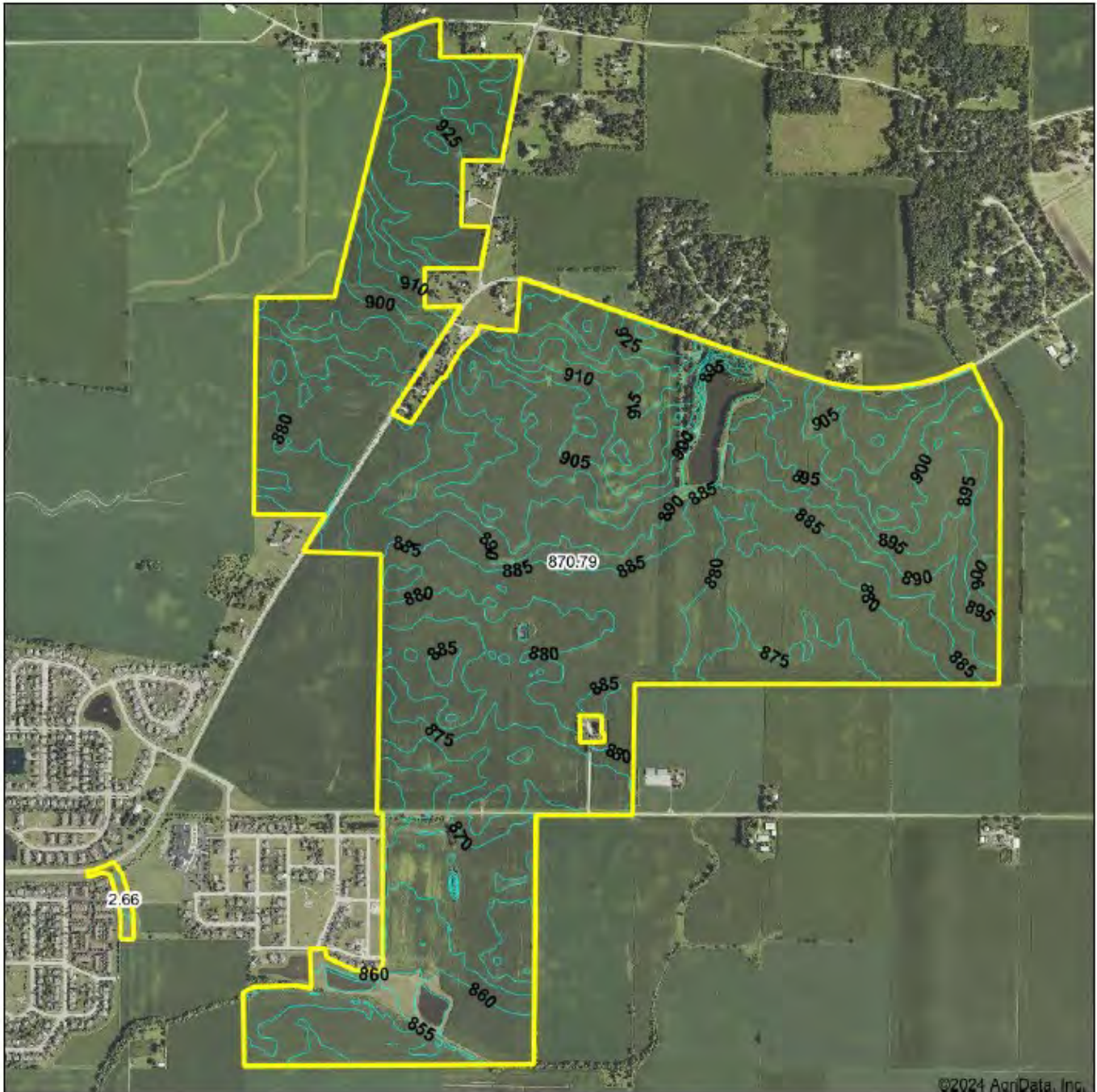
THE SYCAMORE FARM

PLAT MAP



THE SYCAMORE FARM

TOPOGRAPHY MAP



©2024 AgriData, Inc.



Map Provided By



© AgriData, Inc. 2023 www.AgriDataInc.com

Source: USGS 10 meter dem

Interval(ft): 5.0

Min: 847.7

Max: 935.2

Range: 87.5

Average: 887.8

Standard Deviation: 18.5 ft

0ft 1612ft 3224ft



12/9/2024

15-41N-5E
DeKalb County
Illinois

Boundary Center: 42.025008, -88.649016

THE SYCAMORE FARM

SOILS INFORMATION

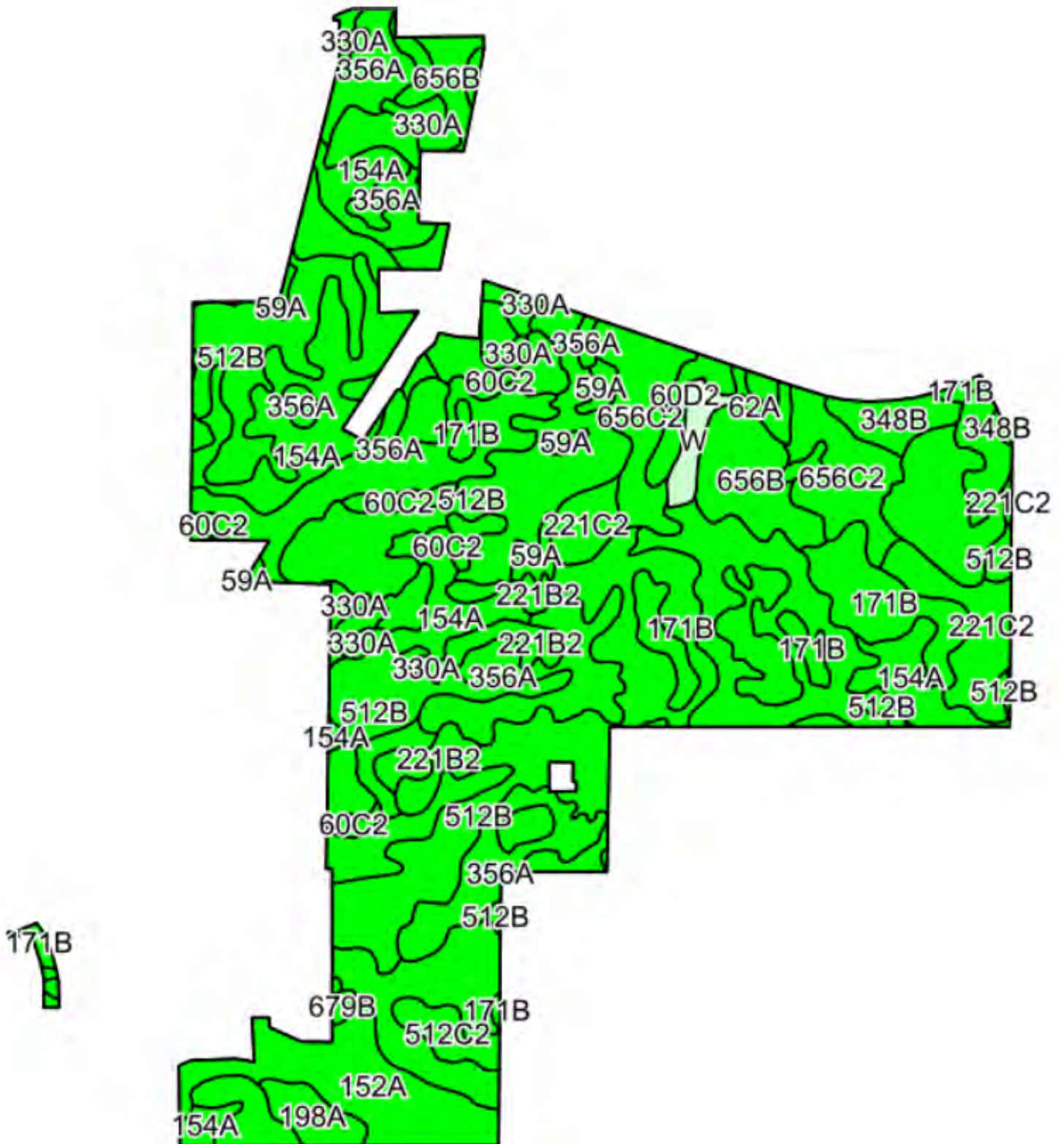
SOILS DESCRIPTIONS & PRODUCTIVITY DATA*

SOIL #	SOIL NAME	APPROX. ACRES	PRODUCTIVITY INDEX (PI)
512B	Danabrook silt loam	174.43	137
356A	Elpaso silty clay loam	157.77	144
171B	Catlin silt loam	96.29	137
154A	Flanagan silt loam	95.47	144
656C2	Octagon silt loam	41.88	111
198A	Elburn silt loam	39.19	143
60C2	La Rose loam	34.24	108
656B	Octagon silt loam	30.35	117
221C2	Parr silt loam	28.04	111
348B	Wingate silt loam	26.36	119
152A	Drummer silty clay loam	21.81	144
330A	Peotone silty clay loam	21.09	123
221B2	Parr silt loam	18.67	113
59A	Lisbon silt loam	12.95	136
512C2	Danabrook silt loam	7.83	128
62A	Herbert silt loam	2.72	131
679B	Blackberry silt loam	1.29	141
193B	Mayville silt loam	1.00	108
60D2	La Rose loam	0.71	101
527B	Kidami silt loam	0.71	114
67A	Harpster silty clay loam	0.09	133
WEIGHTED AVERAGE:			133.8

*Figures taken from the University of Illinois Bulletin 811, Optimum Crop Productivity Ratings for Illinois Soils.

THE SYCAMORE FARM

SOILS MAP



THE SYCAMORE FARM

APPENDIX

THE FOLLOWING PAGES CONTAIN THESE DOCUMENTS:

1. FSA DOCUMENTS
2. PIPELINE MAP
3. CITY OF SYCAMORE BUILDING PERMIT HISTORY

City of Sycamore Comprehensive Plan can be viewed by clicking the link [HERE](#).

For more information, please visit MGW.us.com

or contact:

Josh Waddell (815) 751-0439 | Josh.Waddell@mgw.us.com

Mark Mommsen (815) 901-4269 | Mark.Mommsen@mgw.us.com



MARTIN, GOODRICH & WADDELL, INC.
REAL ESTATE SERVICES



United States
Department of
Agriculture

DeKalb County, Illinois



Legend

- Tract Boundary
- Non-Cropland
- Cropland
- CRP

Wetland Determination Identifiers

- Restricted Use
- Limited Restrictions
- Exempt from Conservation Compliance Provisions

2024 Program Year
Map Created March 06, 2024

Farm 6909
Tract 631

Tract Cropland Total: 81.40 acres

IL037_T631

United States Department of Agriculture (USDA) Farm Service Agency (FSA) maps are for FSA Program administration only. This map does not represent a legal survey or reflect actual ownership; rather it depicts the information provided directly from the producer and/or National Agricultural Imagery Program (NAIP) Imagery. The producer accepts the data 'as is' and assumes all risks associated with its use. USDA-FSA assumes no responsibility for actual or consequential damage incurred as a result of any user's reliance on this data outside FSA Programs. Wetland Identifiers do not represent the size, shape, or specific determination of the area. Refer to your original determination (CPA-026 and attached maps) for exact boundaries and determinations or contact USDA Natural Resources Conservation Service (NRCS).



United States
Department of
Agriculture

DeKalb County, Illinois



Legend

- Tract Boundary
- Non-Cropland
- Cropland
- CRP

Wetland Determination Identifiers

- Restricted Use
- Limited Restrictions
- Exempt from Conservation Compliance Provisions

2024 Program Year
Map Created March 06, 2024

Farm 6909
Tract 2606

Tract Cropland Total: 147.36 acres

IL037_T2606_A1

United States Department of Agriculture (USDA) Farm Service Agency (FSA) maps are for FSA Program administration only. This map does not represent a legal survey or reflect actual ownership; rather it depicts the information provided directly from the producer and/or National Agricultural Imagery Program (NAIP) Imagery. The producer accepts the data "as is" and assumes all risks associated with its use. USDA-FSA assumes no responsibility for actual or consequential damage incurred as a result of any user's reliance on this data outside FSA Programs. Wetland Identifiers do not represent the size, shape, or specific determination of the area. Refer to your original determination (CPA-026 and attached maps) for exact boundaries and determinations or contact USDA Natural Resources Conservation Service (NRCS).



Legend

- Tract Boundary
- Non-Cropland
- Cropland
- CRP

Wetland Determination Identifiers

- Restricted Use
- Limited Restrictions
- Exempt from Conservation Compliance Provisions

2024 Program Year
Map Created March 08, 2024

Farm 6909
Tract 2606

Tract Cropland Total: 147.36 acres

IL037_T2606_B1

United States Department of Agriculture (USDA) Farm Service Agency (FSA) maps are for FSA Program administration only. This map does not represent a legal survey or reflect actual ownership; rather it depicts the information provided directly from the producer and/or National Agricultural Imagery Program (NAIP) imagery. The producer accepts the data "as is" and assumes all risks associated with its use. USDA-FSA assumes no responsibility for actual or consequential damage incurred as a result of any user's reliance on this data outside FSA Programs. Wetland Identifiers do not represent the size, shape, or specific determination of the area. Refer to your original determination (CPA-026 and attached maps) for exact boundaries and determinations or contact USDA Natural Resources Conservation Service (NRCS).



United States
Department of
Agriculture

DeKalb County, Illinois



Legend

- Tract Boundary
- Non-Cropland
- Cropland
- CRP

Wetland Determination Identifiers

- Restricted Use
- Limited Restrictions
- Exempt from Conservation Compliance Provisions

2024 Program Year
Map Created March 06, 2024

Farm 6909
Tract 9209

Tract Cropland Total: 37.31 acres

IL037_T9209

United States Department of Agriculture (USDA) Farm Service Agency (FSA) maps are for FSA Program administration only. This map does not represent a legal survey or reflect actual ownership; rather it depicts the information provided directly from the producer and/or National Agricultural Imagery Program (NAIP) Imagery. The producer accepts the data 'as is' and assumes all risks associated with its use. USDA-FSA assumes no responsibility for actual or consequential damage incurred as a result of any user's reliance on this data outside FSA Programs. Wetland Identifiers do not represent the size, shape, or specific determination of the area. Refer to your original determination (CPA-026 and attached maps) for exact boundaries and determinations or contact USDA Natural Resources Conservation Service (NRCS).



United States
Department of
Agriculture

DeKalb County, Illinois



Legend	
	Tract Boundary
	Non-Cropland
	Cropland
	CRP

Wetland Determination Identifiers	
	Restricted Use
	Limited Restrictions
	Exempt from Conservation Compliance Provisions

2024 Program Year
Map Created March 06, 2024

Farm 6909
Tract 10227

Tract Cropland Total: 54.23 acres

IL037_T10227

United States Department of Agriculture (USDA) Farm Service Agency (FSA) maps are for FSA Program administration only. This map does not represent a legal survey or reflect actual ownership; rather it depicts the information provided directly from the producer and/or National Agricultural Imagery Program (NAIP) Imagery. The producer accepts the data "as is" and assumes all risks associated with its use. USDA-FSA assumes no responsibility for actual or consequential damage incurred as a result of any user's reliance on this data outside FSA Programs. Wetland Identifiers do not represent the size, shape, or specific determination of the area. Refer to your original determination (CPA-026 and attached maps) for exact boundaries and determinations or contact USDA Natural Resources Conservation Service (NRCS).



Legend

- Tract Boundary
- Non-Cropland
- Cropland
- CRP

Wetland Determination Identifiers

- Restricted Use
- Limited Restrictions
- Exempt from Conservation Compliance Provisions

2024 Program Year
Map Created March 06, 2024

Farm 6909
Tract 10228

Tract Cropland Total: 91.10 acres

IL037_T10228

United States Department of Agriculture (USDA) Farm Service Agency (FSA) maps are for FSA Program administration only. This map does not represent a legal survey or reflect actual ownership; rather it depicts the information provided directly from the producer and/or National Agricultural Imagery Program (NAIP) Imagery. The producer accepts the data 'as is' and assumes all risks associated with its use. USDA-FSA assumes no responsibility for actual or consequential damage incurred as a result of any user's reliance on this data outside FSA Programs. Wetland Identifiers do not represent the size, shape, or specific determination of the area. Refer to your original determination (CPA-026 and attached maps) for exact boundaries and determinations or contact USDA Natural Resources Conservation Service (NRCS).



United States
Department of
Agriculture

DeKalb County, Illinois



Legend

- Tract Boundary
- Non-Cropland
- Cropland
- CRP

Wetland Determination Identifiers

- Restricted Use
- Limited Restrictions
- Exempt from Conservation Compliance Provisions

2024 Program Year
Map Created March 06, 2024

Farm 6909
Tract 10229

Tract Cropland Total: 119.80 acres

IL037_T10229

United States Department of Agriculture (USDA) Farm Service Agency (FSA) maps are for FSA Program administration only. This map does not represent a legal survey or reflect actual ownership; rather it depicts the information provided directly from the producer and/or National Agricultural Imagery Program (NAIP) Imagery. The producer accepts the data 'as is' and assumes all risks associated with its use. USDA-FSA assumes no responsibility for actual or consequential damage incurred as a result of any user's reliance on this data outside FSA Programs. Wetland Identifiers do not represent the size, shape, or specific determination of the area. Refer to your original determination (CPA-026 and attached maps) for exact boundaries and determinations or contact USDA Natural Resources Conservation Service (NRCS).



Legend

- Tract Boundary
- Non-Cropland
- Cropland
- CRP

Wetland Determination Identifiers

- Restricted Use
- Limited Restrictions
- Exempt from Conservation Compliance Provisions

2024 Program Year
Map Created March 06, 2024

Farm 6909
Tract 10358

Tract Cropland Total: 141.94 acres

IL037_T10358

United States Department of Agriculture (USDA) Farm Service Agency (FSA) maps are for FSA Program administration only. This map does not represent a legal survey or reflect actual ownership; rather it depicts the information provided directly from the producer and/or National Agricultural Imagery Program (NAIP) Imagery. The producer accepts the data "as is" and assumes all risks associated with its use. USDA-FSA assumes no responsibility for actual or consequential damage incurred as a result of any user's reliance on this data outside FSA Programs. Wetland Identifiers do not represent the size, shape, or specific determination of the area. Refer to your original determination (CPA-026 and attached maps) for exact boundaries and determinations or contact USDA Natural Resources Conservation Service (NRCS).



United States
Department of
Agriculture

DeKalb County, Illinois



Legend	
	Tract Boundary
	Non-Cropland
	Cropland
	CRP

Wetland Determination Identifiers	
	Restricted Use
	Limited Restrictions
	Exempt from Conservation Compliance Provisions

2024 Program Year
Map Created March 06, 2024

Farm 6909
Tract 10487

Tract Cropland Total: 70.59 acres

IL037_T10487

United States Department of Agriculture (USDA) Farm Service Agency (FSA) maps are for FSA Program administration only. This map does not represent a legal survey or reflect actual ownership; rather it depicts the information provided directly from the producer and/or National Agricultural Imagery Program (NAIP) imagery. The producer accepts the data 'as is' and assumes all risks associated with its use. USDA-FSA assumes no responsibility for actual or consequential damage incurred as a result of any user's reliance on this data outside FSA Programs. Wetland Identifiers do not represent the size, shape, or specific determination of the area. Refer to your original determination (CPA-026 and attached maps) for exact boundaries and determinations or contact USDA Natural Resources Conservation Service (NRCS).



United States
Department of
Agriculture

DeKalb County, Illinois



Legend

- Tract Boundary
- Non-Cropland
- Cropland
- CRP

Wetland Determination Identifiers

- Restricted Use
- Limited Restrictions
- Exempt from Conservation Compliance Provisions

2024 Program Year
Map Created March 08, 2024

Farm 6909
Tract 10488

Tract Cropland Total: 48.02 acres

IL037_T10488

United States Department of Agriculture (USDA) Farm Service Agency (FSA) maps are for FSA Program administration only. This map does not represent a legal survey or reflect actual ownership, rather it depicts the information provided directly from the producer and/or National Agricultural Imagery Program (NAIP) imagery. The producer accepts the data 'as is' and assumes all risks associated with its use. USDA-FSA assumes no responsibility for actual or consequential damage incurred as a result of any user's reliance on this data outside FSA Programs. Wetland Identifiers do not represent the size, shape, or specific determination of the area. Refer to your original determination (CPA-026 and attached maps) for exact boundaries and determinations or contact USDA Natural Resources Conservation Service (NRCS).



United States
Department of
Agriculture

DeKalb County, Illinois



Legend

- Tract Boundary
- Non-Cropland
- Cropland
- CRP

Wetland Determination Identifiers

- Restricted Use
- Limited Restrictions
- Exempt from Conservation Compliance Provisions

2024 Program Year

Map Created March 06, 2024

Farm 7419
Tract 11654

IL037_T11654

Tract Cropland Total: 25.49 acres

United States Department of Agriculture (USDA) Farm Service Agency (FSA) maps are for FSA Program administration only. This map does not represent a legal survey or reflect actual ownership; rather it depicts the information provided directly from the producer and/or National Agricultural Imagery Program (NAIP) imagery. The producer accepts the data "as is" and assumes all risks associated with its use. USDA-FSA assumes no responsibility for actual or consequential damage incurred as a result of any user's reliance on this data outside FSA Programs. Wetland identifiers do not represent the size, shape, or specific determination of the area. Refer to your original determination (CPA-026 and attached maps) for exact boundaries and determinations or contact USDA Natural Resources Conservation Service (NRCS).

ILLINOIS

DEKALB

Form: FSA-156EZ

See Page 7 for non-discriminatory Statements.



United States Department of Agriculture
Farm Service Agency

Abbreviated 156 Farm Record

FARM : 6909

Prepared : 12/3/24 4:17 PM CST

Crop Year : 2025

Operator Name :
CRP Contract Number(s) : None
Recon ID : 17-037-2012-50
Transferred From : None
ARCPLC G//F Eligibility : Eligible

Farm Land Data

Farmland	Cropland	DCP Cropland	WBP	EWP	WRP	GRP	Sugarcane	Farm Status	Number Of Tracts
835.27	791.75	791.75	0.00	0.00	0.00	0.00	0.0	Active	9
State Conservation	Other Conservation	Effective DCP Cropland	Double Cropped		CRP	MPL	DCP Ag.Rel. Activity	SOD	
0.00	0.00	791.75	0.00		0.00	0.00	0.00	0.00	

Crop Election Choice

ARC Individual	ARC County	Price Loss Coverage
None	CORN, SOYBN	None

DCP Crop Data

Crop Name	Base Acres	CCC-505 CRP Reduction Acres	PLC Yield	HIP
Corn	775.24	0.00	147	
Soybeans	9.26	0.00	36	0
TOTAL	784.50	0.00		

NOTES

Empty box for notes.

Tract Number : 631

Description : F9/2 SEC 21 & 22 SYCAMORE
FSA Physical Location : ILLINOIS/DEKALB
ANSI Physical Location : ILLINOIS/DEKALB
BIA Unit Range Number :
HEL Status : NHEL: No agricultural commodity planted on undetermined fields
Wetland Status : Tract does not contain a wetland
WL Violations : None
Owners :
Other Producers : None
Recon ID : None

Tract Land Data

Farm Land	Cropland	DCP Cropland	WBP	EWP	WRP	GRP	Sugarcane
92.47	81.40	81.40	0.00	0.00	0.00	0.00	0.0

ILLINOIS
DEKALB
Form: FSA-156EZ



United States Department of Agriculture
Farm Service Agency

Abbreviated 156 Farm Record

FARM : 6909
Prepared : 12/3/24 4:17 PM CST
Crop Year : 2025

Tract 631 Continued ...

State Conservation	Other Conservation	Effective DCP Cropland	Double Cropped	CRP	MPL	DCP Ag. Rel Activity	SOD
0.00	0.00	81.40	0.00	0.00	0.00	0.00	0.00

DCP Crop Data

Crop Name	Base Acres	CCC-505 CRP Reduction Acres	PLC Yield
Corn	79.69	0.00	147
Soybeans	0.95	0.00	36
TOTAL	80.64	0.00	

NOTES

--

Tract Number : 2606

- Description : E10/1 & 4 Sec 15 Sycamore
- FSA Physical Location : ILLINOIS/DEKALB
- ANSI Physical Location : ILLINOIS/DEKALB
- BIA Unit Range Number :
- HEL Status : HEL field on tract.Conservation system being actively applied
- Wetland Status : Wetland determinations not complete
- WL Violations : None
- Owners :
- Other Producers : None
- Recon ID : None

Tract Land Data

Farm Land	Cropland	DCP Cropland	WBP	EWP	WRP	GRP	Sugarcane
154.94	147.36	147.36	0.00	0.00	0.00	0.00	0.0
State Conservation	Other Conservation	Effective DCP Cropland	Double Cropped	CRP	MPL	DCP Ag. Rel Activity	SOD
0.00	0.00	147.36	0.00	0.00	0.00	0.00	0.00

DCP Crop Data

Crop Name	Base Acres	CCC-505 CRP Reduction Acres	PLC Yield
Corn	144.21	0.00	147
Soybeans	1.72	0.00	36
TOTAL	145.93	0.00	

NOTES

--

ILLINOIS
DEKALB
Form: FSA-156EZ



United States Department of Agriculture
Farm Service Agency

Abbreviated 156 Farm Record

FARM : 6909
Prepared : 12/3/24 4:17 PM CST
Crop Year : 2025

Tract Number : 9209
Description : E10/4 Sec 22 Sycamore
FSA Physical Location : ILLINOIS/DEKALB
ANSI Physical Location : ILLINOIS/DEKALB
BIA Unit Range Number :
HEL Status : NHEL: No agricultural commodity planted on undetermined fields
Wetland Status : Wetland determinations not complete
WL Violations : None
Owners :
Other Producers : None
Recon ID : None

Tract Land Data

Farm Land	Cropland	DCP Cropland	WBP	EWP	WRP	GRP	Sugarcane
39.93	37.31	37.31	0.00	0.00	0.00	0.00	0.0
State Conservation	Other Conservation	Effective DCP Cropland	Double Cropped	CRP	MPL	DCP Ag. Rel Activity	SOD
0.00	0.00	37.31	0.00	0.00	0.00	0.00	0.00

DCP Crop Data

Crop Name	Base Acres	CCC-505 CRP Reduction Acres	PLC Yield
Corn	36.51	0.00	147
Soybeans	0.44	0.00	36
TOTAL	36.95	0.00	

NOTES

Tract Number : 10227
Description : E10/ SEC 15 SYCAMORE
FSA Physical Location : ILLINOIS/DEKALB
ANSI Physical Location : ILLINOIS/DEKALB
BIA Unit Range Number :
HEL Status : HEL field on tract.Conservation system being actively applied
Wetland Status : Wetland determinations not complete
WL Violations : None
Owners :
Other Producers : None
Recon ID : None

Tract Land Data

Farm Land	Cropland	DCP Cropland	WBP	EWP	WRP	GRP	Sugarcane
54.23	54.23	54.23	0.00	0.00	0.00	0.00	0.0

ILLINOIS
DEKALB
Form: FSA-156EZ



United States Department of Agriculture
Farm Service Agency

Abbreviated 156 Farm Record

FARM : 6909
Prepared : 12/3/24 4:17 PM CST
Crop Year : 2025

Tract 10227 Continued ...

State Conservation	Other Conservation	Effective DCP Cropland	Double Cropped	CRP	MPL	DCP Ag. Rel Activity	SOD
0.00	0.00	54.23	0.00	0.00	0.00	0.00	0.00

DCP Crop Data

Crop Name	Base Acres	CCC-505 CRP Reduction Acres	PLC Yield
Corn	53.10	0.00	147
Soybeans	0.63	0.00	36
TOTAL	53.73	0.00	

NOTES

--

Tract Number : 10228

- Description : E10/SEC 15 SYCAMORE
- FSA Physical Location : ILLINOIS/DEKALB
- ANSI Physical Location : ILLINOIS/DEKALB
- BIA Unit Range Number :
- HEL Status : HEL field on tract.Conservation system being actively applied
- Wetland Status : Tract contains a wetland or farmed wetland
- WL Violations : None
- Owners :
- Other Producers : None
- Recon ID : None

Tract Land Data

Farm Land	Cropland	DCP Cropland	WBP	EWP	WRP	GRP	Sugarcane
91.10	91.10	91.10	0.00	0.00	0.00	0.00	0.0
State Conservation	Other Conservation	Effective DCP Cropland	Double Cropped	CRP	MPL	DCP Ag. Rel Activity	SOD
0.00	0.00	91.10	0.00	0.00	0.00	0.00	0.00

DCP Crop Data

Crop Name	Base Acres	CCC-505 CRP Reduction Acres	PLC Yield
Corn	89.23	0.00	147
Soybeans	1.07	0.00	36
TOTAL	90.30	0.00	

NOTES

--

ILLINOIS
DEKALB
Form: FSA-156EZ



United States Department of Agriculture
Farm Service Agency

Abbreviated 156 Farm Record

FARM : 6909
Prepared : 12/3/24 4:17 PM CST
Crop Year : 2025

Tract Number : 10229
Description : E10/ SEC 22 SYCAMORE
FSA Physical Location : ILLINOIS/DEKALB
ANSI Physical Location : ILLINOIS/DEKALB
BIA Unit Range Number :
HEL Status : HEL field on tract.Conservation system being actively applied
Wetland Status : Tract contains a wetland or farmed wetland
WL Violations : None
Owners :
Other Producers : None
Recon ID : None

Tract Land Data

Farm Land	Cropland	DCP Cropland	WBP	EWP	WRP	GRP	Sugarcane
119.80	119.80	119.80	0.00	0.00	0.00	0.00	0.0
State Conservation	Other Conservation	Effective DCP Cropland	Double Cropped	CRP	MPL	DCP Ag. Rel Activity	SOD
0.00	0.00	119.80	0.00	0.00	0.00	0.00	0.00

DCP Crop Data

Crop Name	Base Acres	CCC-505 CRP Reduction Acres	PLC Yield
Corn	117.29	0.00	147
Soybeans	1.40	0.00	36
TOTAL	118.69	0.00	

NOTES

Tract Number : 10358
Description : E10 SEC 14, 15, 22, 23 SYCAMORE TWP
FSA Physical Location : ILLINOIS/DEKALB
ANSI Physical Location : ILLINOIS/DEKALB
BIA Unit Range Number :
HEL Status : HEL field on tract.Conservation system being actively applied
Wetland Status : Wetland determinations not complete
WL Violations : None
Owners :
Other Producers : None
Recon ID : None

Tract Land Data

Farm Land	Cropland	DCP Cropland	WBP	EWP	WRP	GRP	Sugarcane
141.94	141.94	141.94	0.00	0.00	0.00	0.00	0.0

ILLINOIS
DEKALB
Form: FSA-156EZ



United States Department of Agriculture
Farm Service Agency

Abbreviated 156 Farm Record

FARM : 6909
Prepared : 12/3/24 4:17 PM CST
Crop Year : 2025

Tract Number : 10488
Description : E10 SEC 14, 15, 22, 23 SYCAMORE TWP
FSA Physical Location : ILLINOIS/DEKALB
ANSI Physical Location : ILLINOIS/DEKALB
BIA Unit Range Number :
HEL Status : HEL field on tract.Conservation system being actively applied
Wetland Status : Tract contains a wetland or farmed wetland
WL Violations : None
Owners :
Other Producers : None
Recon ID : None

Tract Land Data

Farm Land	Cropland	DCP Cropland	WBP	EWP	WRP	GRP	Sugarcane
70.27	48.02	48.02	0.00	0.00	0.00	0.00	0.0
State Conservation	Other Conservation	Effective DCP Cropland	Double Cropped	CRP	MPL	DCP Ag. Rel Activity	SOD
0.00	0.00	48.02	0.00	0.00	0.00	0.00	0.00

DCP Crop Data

Crop Name	Base Acres	CCC-505 CRP Reduction Acres	PLC Yield
Corn	47.06	0.00	147
Soybeans	0.56	0.00	36
TOTAL	47.62	0.00	

NOTES

In accordance with Federal civil rights law and U.S. Department of Agriculture (USDA) civil rights regulations and policies, the USDA, its Agencies, offices, and employees, and institutions participating in or administering USDA programs are prohibited from discriminating based on race, color, national origin, religion, sex, gender identity (including gender expression), sexual orientation, disability, age, marital status, family/parental status, income derived from a public assistance program, political beliefs, or reprisal or retaliation for prior civil rights activity, in any program or activity conducted or funded by USDA (not all bases apply to all programs). Remedies and complaint filing deadlines vary by program or incident.

Persons with disabilities who require alternative means of communication for program information (e.g., Braille, large print, audiotape, American Sign Language, etc.) should contact the responsible Agency or USDA's TARGET Center at (202) 720-2600 (voice and TTY) or contact USDA through the Federal Relay Service at (800) 877-8339. Additionally, program information may be made available in languages other than English.

To file a program discrimination complaint, complete the USDA Program Discrimination Complaint Form, AD-3027, found online at http://www.ascr.usda.gov/complaint_filing_cust.html and at any USDA office or write a letter addressed to USDA and provide in the letter all of the information requested in the form. To request a copy of the complaint form, call (866) 632-9992. Submit your completed form or letter to USDA by: (1) mail: U.S. Department of Agriculture Office of the Assistant Secretary for Civil Rights 1400 Independence Avenue, SW Washington, D.C. 20250-9410; (2) fax: (202) 690-7442; or (3) e-mail: program.intake@usda.gov. USDA is an equal opportunity provider, employer, and lender.

ILLINOIS
DEKALB



United States Department of Agriculture
Farm Service Agency

FARM : 7419

Prepared : 12/3/24 4:24 PM CST

Form: FSA-156EZ

Crop Year : 2025

See Page 2 for non-discriminatory Statements.

Abbreviated 156 Farm Record

Operator Name :
CRP Contract Number(s) : None
Recon ID : None
Transferred From : None
ARCPLC G//F Eligibility : Eligible

Farm Land Data

Farmland	Cropland	DCP Cropland	WBP	EWP	WRP	GRP	Sugarcane	Farm Status	Number Of Tracts
25.49	25.49	25.49	0.00	0.00	0.00	0.00	0.0	Active	1
State Conservation	Other Conservation	Effective DCP Cropland	Double Cropped		CRP	MPL	DCP Ag.Rel. Activity	SOD	
0.00	0.00	25.49	0.00		0.00	0.00	0.00	0.00	

Crop Election Choice

ARC Individual	ARC County	Price Loss Coverage
None	None	None

DCP Crop Data

Crop Name	Base Acres	CCC-505 CRP Reduction Acres	PLC Yield	HIP
-----------	------------	-----------------------------	-----------	-----

NOTES

--

Tract Number : 11654

Description : Sycamore Twp Sec21
FSA Physical Location : ILLINOIS/DEKALB
ANSI Physical Location : ILLINOIS/DEKALB
BIA Unit Range Number :
HEL Status : HEL determinations not completed for all fields on the tract
Wetland Status : Wetland determinations not complete
WL Violations : None
Owners :
Other Producers : None
Recon ID : None

Tract Land Data

Farm Land	Cropland	DCP Cropland	WBP	EWP	WRP	GRP	Sugarcane
25.49	25.49	25.49	0.00	0.00	0.00	0.00	0.0
State Conservation	Other Conservation	Effective DCP Cropland	Double Cropped	CRP	MPL	DCP Ag. Rel Activity	SOD
0.00	0.00	25.49	0.00	0.00	0.00	0.00	0.00

ILLINOIS
DEKALB
Form: FSA-156EZ



United States Department of Agriculture
Farm Service Agency

Abbreviated 156 Farm Record

FARM : 7419
Prepared : 12/3/24 4:24 PM CST
Crop Year : 2025

DCP Crop Data

Tract 11654 Continued ...

Crop Name	Base Acres	CCC-505 CRP Reduction Acres	PLC Yield
-----------	------------	-----------------------------	-----------

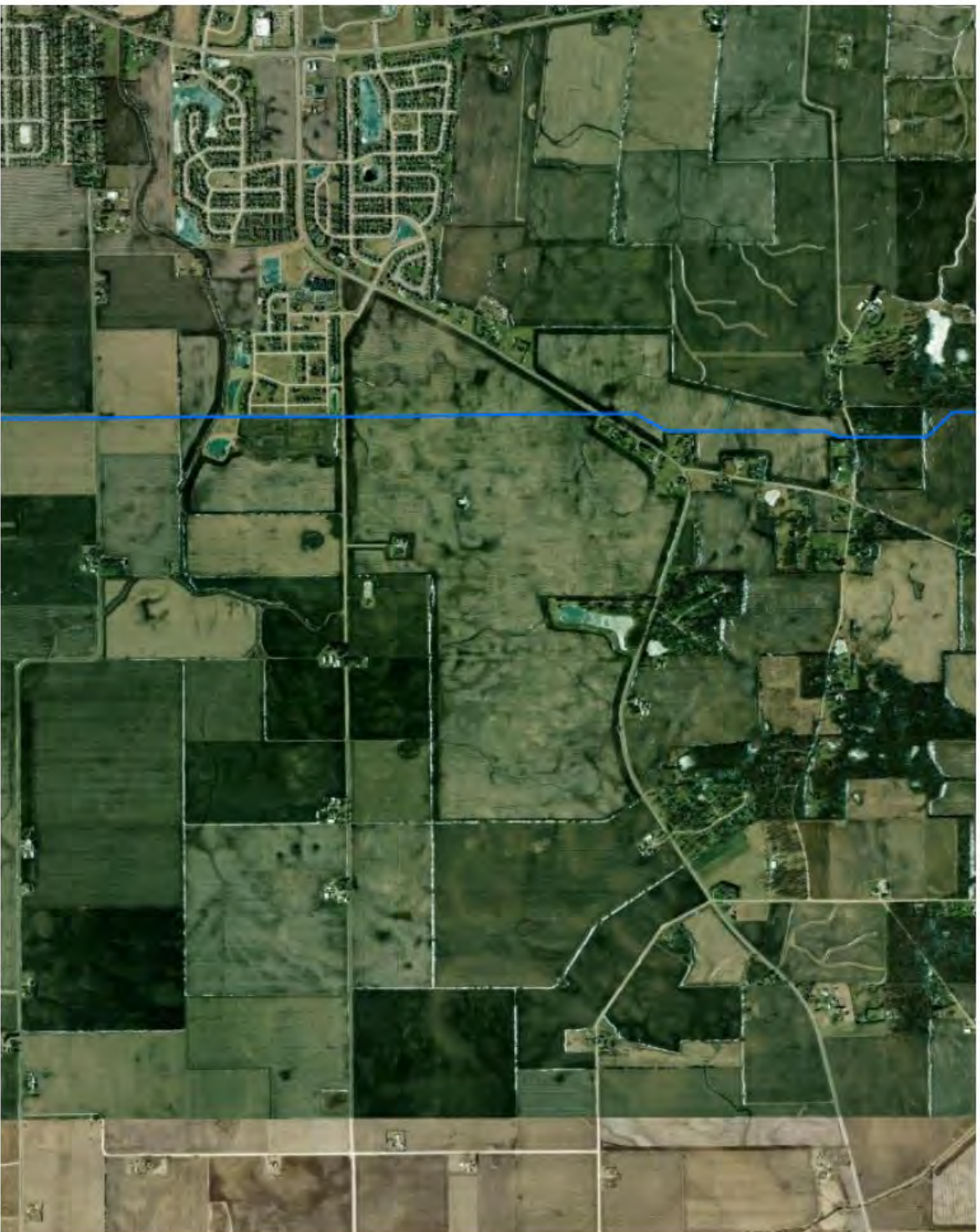
NOTES

In accordance with Federal civil rights law and U.S. Department of Agriculture (USDA) civil rights regulations and policies, the USDA, its Agencies, offices, and employees, and institutions participating in or administering USDA programs are prohibited from discriminating based on race, color, national origin, religion, sex, gender identity (including gender expression), sexual orientation, disability, age, marital status, family/parental status, income derived from a public assistance program, political beliefs, or reprisal or retaliation for prior civil rights activity, in any program or activity conducted or funded by USDA (not all bases apply to all programs). Remedies and complaint filing deadlines vary by program or incident.

Persons with disabilities who require alternative means of communication for program information (e.g., Braille, large print, audiotape, American Sign Language, etc.) should contact the responsible Agency or USDA's TARGET Center at (202) 720-2600 (voice and TTY) or contact USDA through the Federal Relay Service at (800) 877-8339. Additionally, program information may be made available in languages other than English.

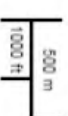
To file a program discrimination complaint, complete the USDA Program Discrimination Complaint Form, AD-3027, found online at http://www.ascr.usda.gov/complaint_filing_cust.html and at any USDA office or write a letter addressed to USDA and provide in the letter all of the information requested in the form. To request a copy of the complaint form, call (866) 632-9992. Submit your completed form or letter to USDA by: (1) mail: U.S. Department of Agriculture Office of the Assistant Secretary for Civil Rights 1400 Independence Avenue, SW Washington, D.C. 20250-9410; (2) fax: (202) 690-7442; or (3) e-mail: program.intake@usda.gov. USDA is an equal opportunity provider, employer, and lender.

NATIONAL PIPELINE MAPPING SYSTEM



Legend

- Gas Transmission Pipelines
- Hazardous Liquid Pipelines



Pipelines depicted on this map represent gas transmission and hazardous liquid lines only. Gas gathering and gas distribution systems are not represented.

This map should never be used as a substitute for contacting a one-call center prior to excavation activities. Please call 811 before any digging occurs.

Questions regarding this map or its contents can be directed to npmns@doh.gov.

Projection: Geographic

Datum: NAD83

Map produced by the Public Viewer application at www.npmns.primsa.doh.gov

World imagery map service data is attributed to Esri, Maxar, Earthstar Geographics, and the GIS User Community.

Date Printed: Dec 09, 2024



CITY OF SYCAMORE
BUILDING PERMIT HISTORY

Year	SF DET			SF ATT			MF			SF DET			TOTAL DWELLINGS			COMMERCIAL			INDUSTRIAL			TOTAL		
	No.	Valuation	Units	No.	Valuation	Units	No.	Valuation	Units	No.	Valuation	Units	No.	Valuation	Units	No.	Valuation	Units	No.	Valuation	Units	Misc*	VALUATION	VALUATION
1995	32	\$4,098,045	16	\$1,190,000	22	\$890,000	32	\$6,178,045	11	\$1,693,000	7	\$1,808,000	\$811,805	\$19,679,045	\$20,490,850									
1996	38	\$3,908,650	32	\$2,147,000	42	\$1,656,304	38	\$7,711,954	8	\$2,266,500	1	\$97,000	\$1,135,703	\$10,075,454	\$11,211,157									
1997	45	\$5,734,300	17	\$1,275,000	26	\$1,290,000	45	\$8,299,300	5	\$5,550,000	9	\$2,100,000	\$1,210,362	\$15,949,300	\$17,159,662									
1998	65	\$8,753,100	35	\$2,445,767	40	\$2,354,304	65	\$13,553,171	23	\$10,829,250	2	\$194,000	\$678,289	\$24,576,421	\$25,254,710									
1999	64	\$8,469,000	49	\$3,200,000	30	\$2,316,000	64	\$13,985,000	33	\$11,584,000	3	\$1,237,000	\$399	\$26,806,000	\$26,806,399									
2000	88	\$13,059,400	20	\$1,975,000	20	\$1,818,000	88	\$16,852,400	22	\$5,324,066	3	\$196,000	\$1,344,101	\$22,372,466	\$23,716,567									
2001	78	\$12,677,600	35	\$2,731,000	31	\$2,416,000	78	\$17,824,600	22	\$9,341,867	4	\$3,993,000	\$981,346	\$31,159,467	\$32,140,813									
2002	114	\$20,004,600	69	\$6,874,000	14	\$732,000	114	\$27,610,600	33	\$7,582,420	2	\$3,905,000	\$1,130,222	\$39,098,020	\$40,228,242									
2003	139	\$27,601,170	76	\$7,053,000	43	\$2,575,000	139	\$37,229,170	24	\$3,881,300	3	\$1,437,000	\$1,301,612	\$42,547,470	\$43,849,082									
2004	197	\$36,118,212	44	\$4,067,000	90	\$5,791,650	197	\$45,976,862	20	\$8,817,012	5	\$6,805,000	\$2,226,460	\$61,598,874	\$63,825,334									
2005	248	\$63,837,224	165	\$14,193,000	292	\$15,440,625	248	\$93,470,849	50	\$14,472,556	6	\$1,719,000	\$2,530,378	\$109,662,405	\$112,192,783									
2006	159	\$40,346,932	79	\$8,067,500	127	\$6,424,250	159	\$54,838,682	54	\$9,779,554	6	\$2,651,800	\$2,284,298	\$67,270,036	\$69,554,334									
2007	75	\$15,025,398	57	\$5,815,000	95	\$4,870,000	75	\$25,710,398	66	\$19,801,296	9	\$3,860,393	\$2,179,982	\$49,372,087	\$51,552,069									
2008	14	\$3,279,220	13	\$4,464,000	7	\$2,362,000	34	\$10,105,220	43	\$15,398,500	11	\$4,980,000	\$1,555,143	\$30,483,720	\$32,038,863									
2009	10	\$2,951,000	4	\$1,503,000	2	\$3,618,390	16	\$8,072,390	46	\$4,713,724	2	\$451,000	-\$2,720,285	\$13,237,114	\$10,516,829									
2010	19	\$4,261,000	0	\$0	1	\$240,000	20	\$4,501,000	69	\$8,717,432	13	\$8,803,100	\$2,023,555	\$22,021,532	\$24,045,087									
2011	16	\$2,568,700	2	\$660,000	0	\$0	18	\$3,228,700	91	\$17,235,645	15	\$369,620	\$1,486,560	\$20,833,965	\$22,320,525									
2012	13	\$2,589,000	0	\$0	3	\$1,388,000	16	\$3,977,000	112	\$11,779,011	16	\$1,280,100	\$1,543,555	\$17,036,111	\$18,579,666									
2013	30	\$6,109,500	0	\$0	7	\$3,469,000	37	\$9,578,500	91	\$7,974,570	11	\$1,523,275	\$2,824,425	\$19,076,345	\$21,900,770									
2014	39	\$6,998,965	0	\$0	9	\$3,627,000	48	\$10,625,965	86	\$9,335,675	7	\$48,000	\$1,486,358	\$20,009,640	\$21,495,998									
2015	48	\$9,776,000	2	\$675,000	9	\$3,504,000	59	\$13,955,000	101	\$6,052,688	12	\$18,200,919	\$1,899,933	\$38,208,607	\$40,108,540									
2016	50	\$9,564,500	0	\$0	4	\$2,731,000	54	\$12,295,500	123	\$34,882,295	15	\$3,791,145	\$2,018,237	\$50,968,940	\$52,987,177									
2017	46	\$10,061,300	0	\$0	3	\$1,966,000	49	\$12,027,300	107	\$50,879,621	25	\$3,106,409	\$5,588,387	\$66,013,330	\$71,601,717									
2018	53	\$11,971,164	0	\$0	4	\$1,116,000	57	\$13,087,164	103	\$5,404,187	21	\$6,397,250	\$2,568,933	\$24,888,601	\$27,457,534									
2019	38	\$8,675,500	1	\$260,000	3	\$1,606,327	41	\$10,541,827	120	\$43,325,267	19	\$5,388,391	\$3,985,702	\$59,185,485	\$63,171,187									
2020	41	\$11,426,520	0	\$0	3	\$2,300,000	45	\$14,526,520	94	\$13,327,933	19	\$14,345,850	\$4,342,680	\$42,200,303	\$46,542,983									
2021	42	\$13,259,200	3	\$900,000	3	\$2,350,000	50	\$16,509,200	106	\$6,984,567	17	\$629,498	\$4,884,286	\$24,123,265	\$29,007,551									
2022	33	\$11,650,189	8	\$2,400,000	3	\$2,775,000	44	\$16,825,189	124	\$11,476,072	31	\$5,014,248	\$11,802,493	\$33,315,509	\$45,118,002									
2023	36	\$9,945,575	10	\$3,000,000	2	\$1,300,000	48	\$14,245,575	90	\$18,515,860	8	\$681,200	\$5,113,287	\$33,442,635	\$38,555,922									
No. = Number of buildings																								
Units = Dwellings per building																								
SF DET = Single Family Detached (New Construction) R1 & R4																								
SF ATT = Single Family Attached (New Construction) (2 units Duplex/Townhome) R2 & R3																								
MF = Multi-Family (New Construction) (3 units or more Condos/Rentals) R3																								
COMMERCIAL = (Includes additions and remodeling and Govt./Inst/Educational) C1-C4 & INST, PUB USE																								
INDUSTRIAL = (Includes additions and remodeling, accessory structures, decks, fences, signs, electrical & plumbing upgrades, etc.																								



MARTIN, GOODRICH & WADDELL, INC.
REAL ESTATE SERVICES

Real Estate

Farm Management

Appraisals

Consulting



MGW.us.com

Sycamore, IL 815-756-3606 • DeWitt, IA 563-659-6565

info@mgw.us.com